

# TILTING SKILLETS

ELECTRIC, MANUAL TILTING  
LEG MOUNTED  
MADE IN USA

# CLASSIC MODEL TES

## STANDARD FEATURES



**Model TES-2440-9**  
with optional locking control cover and  
1 1/2 draw-off valve

- ◆ 304 stainless seam welded pan with:
  - ◇ Center trunnion mounted
  - ◇ Self-locking worm gear tilt mechanism
  - ◇ Rotation exceeds 90°
  - ◇ 304 stainless clad cooking surface
  - ◇ 240V, three phase (3Ø) standard
- ◆ Adjustable thermostat (175°F to 400°F)
- ◆ High limit safety thermostat
- ◆ 304 stainless patented safety lid, seam welded with:
  - ◇ Actuator-assisted counterbalance
  - ◇ Full width condensate drip shield
  - ◇ Full width rear steam vent
  - ◇ Single side-mounted safety handle
- ◆ 304 stainless, reinforced, water resistant consoles
- ◆ 304 stainless tubular frame construction
- ◆ Knockdown capability to fit through 26" x 66" opening
- ◆ Adjustable bullet feet

Legion equipment is built to comply with applicable standards for manufacturers. Approval agencies may include ASME, NSF, UL, ETL, AGA, CSA, CGA, and others. Legion reserves the right of design improvement or modification as warranted. U.S. Patent No. 5,865,101.

MODELS AND CAPACITIES					OPTIONAL FEATURES AND ACCESSORIES	
					See price list for supplemental information regarding options	
Model	2.5" Pans or Cooking Baskets	Griddle Area (in. <sup>2</sup> )	Kettle (Gals.)	Oven Volume (ft. <sup>3</sup> )		
TES-2424-7	1	628	19	2.5		
TES-2424-9	1	628	24	3.3		
TES-2424-11	1	628	30	4.0		
TES-2430-7	2	778	23	3.2		
TES-2430-9	2	778	30	4.1		
TES-2430-11	2	778	37	5.0		
TES-2440-7	3	1029	31	4.2		
TES-2440-9	3	1029	40	5.4		
TES-2440-11	3	1029	49	6.6		
Select voltage: <input type="checkbox"/> 208V <input type="checkbox"/> 240V <input type="checkbox"/> 380V <input type="checkbox"/> 415V <input type="checkbox"/> 440V <input type="checkbox"/> 480V    Select phase: <input type="checkbox"/> 1Ø or <input type="checkbox"/> 3Ø Select draw-off valve: <input type="checkbox"/> 1½" <input type="checkbox"/> 2" <input type="checkbox"/> 3" with: <input type="checkbox"/> compression or <input type="checkbox"/> ball type fitting. (see price list for other draw-off valve options)					<input type="checkbox"/> Faucet bracket mounted on unit <input type="checkbox"/> Single or double fill faucet with bracket & 12 or 18" swing nozzle <input type="checkbox"/> 48" s/s flexible spray hose assembly (vinyl or stainless) for use with dual or single fill faucet <input type="checkbox"/> Automatic water filling meter (Call for information regarding additional faucet options) <input type="checkbox"/> Electric timer with buzzer <input type="checkbox"/> Casters (two each locking /non-locking type) & restraining devices <input type="checkbox"/> Adjustable flanged feet <input type="checkbox"/> In wall carrier for wall mounting <input type="checkbox"/> Draw-off drain hose <input type="checkbox"/> #10 can holder for draw-off <input type="checkbox"/> Flat bottom scoop <input type="checkbox"/> Perforated or solid 12x20 food pans 2½, 4, or 6" deep <input type="checkbox"/> Perforated cooking/steaming basket (11 x 20½ x 5) <input type="checkbox"/> Classic care kit	
					<input type="checkbox"/> Pour lip pan holder assembly <input type="checkbox"/> Draw-off pan holder assembly <input type="checkbox"/> Pour lip strainer <input type="checkbox"/> Stationary side frame and tray  <b>Prison/Security Options:</b> <input type="checkbox"/> Fasteners (screws & nuts) <input type="checkbox"/> Nut driver tool <input type="checkbox"/> Screw driver tool <input type="checkbox"/> Draw-off nut driver tool <input type="checkbox"/> Lockable lid <input type="checkbox"/> Lockable control cover	

Revision 999



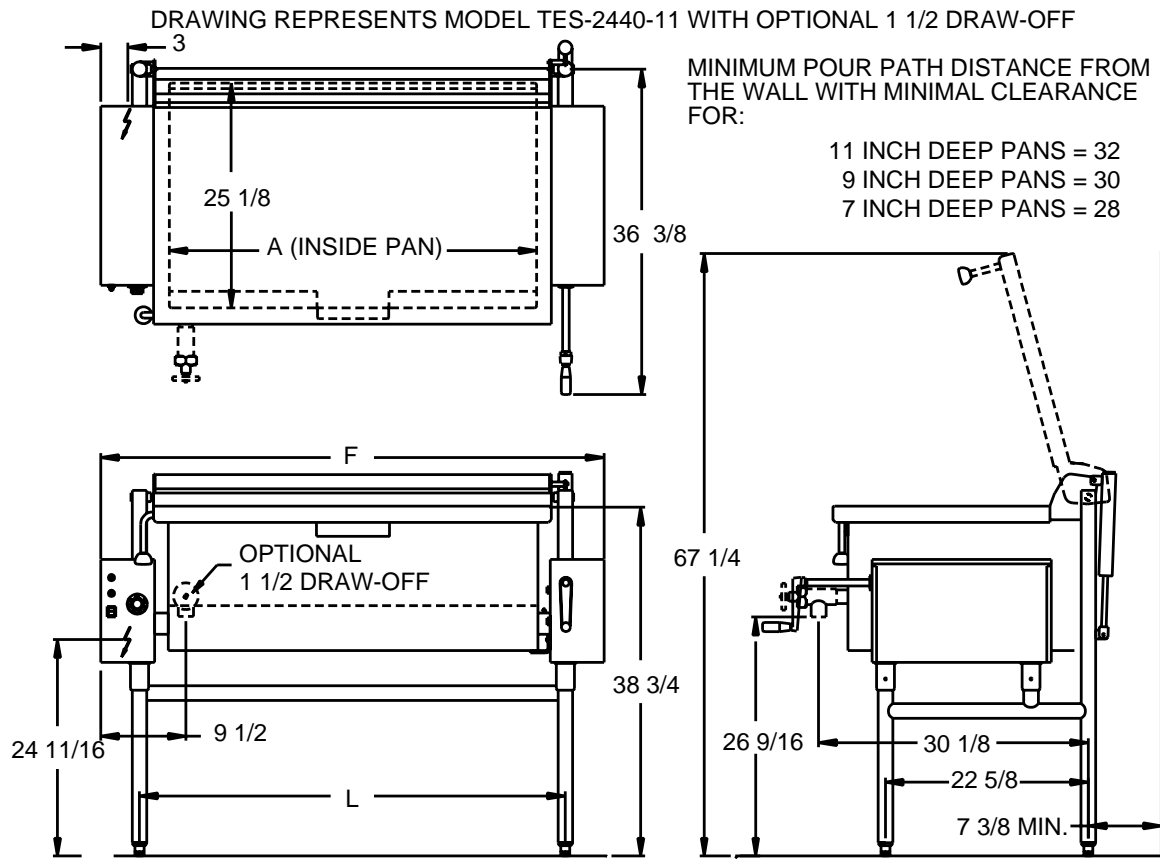
**LEGION** The Finest American Quality Since 1897

LEGION INDUSTRIES, INC. ♦ 69 MAIN ST. ♦ DALLAS, PA 18612 ♦ (800) 833-9803 ♦ (570) 675-1575 ♦ FAX: (570) 675-7551

# CLASSIS MODEL TES

ELECTRIC, MANUAL TILTING  
LEG MOUNTED  
MADE IN USA

# TILTING SKILLETS



## CLASSIC™ DIMENSIONS

Model	Depth	A	F	L	Model	Depth	A	F	L	Model	Depth	A	F	L
TES-2424-7	7	25.0	40.1	31.5	TES-2430-7	7	31.0	46.1	37.5	TES-2440-7	7	41.0	56.1	47.5
TES-2424-9	9	25.0	40.1	31.5	TES-2430-9	9	31.0	46.1	37.5	TES-2440-9	9	41.0	56.1	47.5
TES-2424-11	11	25.0	40.1	31.5	TES-2430-11	11	31.0	46.1	37.5	TES-2440-11	11	41.0	56.1	47.5

## CLASSIC™ ELECTRICAL SPECIFICATIONS

(Table represents amperes per phase)

Model*	kW	208 Volt		240 Volt		380 Volt		415 Volt		440 Volt		480 Volt	
		1Ø	3Ø	1Ø	3Ø	1Ø	3Ø	1Ø	3Ø	1Ø	3Ø	1Ø	3Ø
TES-2424-( )	10.6	51.0	29.4	44.2	25.5	27.9	16.1	25.5	14.7	24.1	13.9	22.1	12.8
TES-2430-( )	11.1	53.4	30.8	46.3	26.7	29.2	16.9	26.7	15.4	25.2	14.6	23.1	13.4
TES-2440-( )	15.0	72.1	41.6	62.5	36.1	39.5	22.8	36.1	20.9	34.1	19.7	31.3	18.0

U.S. Patent No. 5,865,101

Revision 999



**LEGION** The Finest American Quality Since 1897

LEGION INDUSTRIES, INC. ♦ 69 MAIN ST. ♦ DALLAS, PA 18612 ♦ (800) 833-9803 ♦ (570) 675-1575 ♦ FAX: (570) 675-7551