



We put space to work.

Item # _____

Job _____



SmartWall System

SmartWall System

Organized, efficient wall space at work.

A unique storage and work station system for often underutilized space — empty walls. SmartWall and its system of integrated wall tracks offer the flexibility to add wall shelving and wall mounted task stations where needed throughout a facility. The use of the system around and above sinks, work tables, and equipment will keep these areas cleaner and more organized. SmartWall can become an integral part of everyday operating processes to improve efficiencies and ultimately the return on investment (ROI).

- **Flexible, Robust Design:** Wall tracks and uprights are designed to interface with wood studs, plywood, concrete, and other suitable wall structures.



Task Station (medium duty) with accessories for a sink/prep area.



Task Station (standard duty) with accessories for a food prep area.



Adjustable Wall Shelving

Configurations

Task Stations: unique combinations of wall tracks, shelves, grids, and accessories.

Adjustable Wall Shelving: standard Metro Super Erecta® wire and solid, Super Erecta Pro®, MetroMax® Q, and MetroMax® i shelves can be used with the SmartWall shelf supports.

- **Easy to Adjust:** Uprights and grid brackets can be easily repositioned along the track.

Heavy Gauge Uprights: 1 1/2" (38mm) vertical adjustment of shelves and grids.

Grids: 3" (76mm) vertical and horizontal adjustment of accessories.

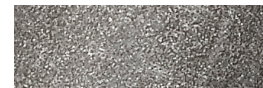
- **Easy to Install:** Simply attach the wall tracks to a proper mounting structure. The wall tracks provide a level mounting surface for uprights and grid brackets. Hang the uprights or grid brackets from the track. Configure the task station or wall shelving. Finally, secure the uprights or bottom grid brackets to the wall.

- **Easy to Clean:** Shelves, shelf supports, and grids can easily be removed for thorough cleaning of walls. Wall tracks and uprights can easily be wiped clean.

- **Durable Finishes:** Available in Metroseal Green or Gray epoxy for dry, wet or damp environments with built-in Microban® antimicrobial product protection to inhibit the growth of bacteria, mold, mildew, and fungus that cause odors and product degradation.



Green Metroseal Epoxy Finish with Microban



Gray Metroseal Epoxy Finish with Microban

All Metro Catalog Sheets are available on our website: www.metro.com



InterMetro Industries Corporation
North Washington Street, Wilkes-Barre, PA 18705
Product Information. U.S. and Canada: 1.800.992.1776
Outside U.S. and Canada: www.metro.com/contactus

L02-181
Printed in U.S.A. Rev. 7/20

Information and specifications are subject to change without notice. Please confirm at time of order.

Copyright © 2020 InterMetro Industries Corp.

10.42

Specifications

- **Wall Tracks:** 12 gauge cold rolled steel; obround mounting holes located at 8" (204mm) increments; first and last holes are located 4" (102mm) from the ends of the track; obround hole dimensions (1/8" x 3/4" [3 x 19mm]). Wall tracks include stop fasteners for the ends of the tracks and joiner plates for connecting adjacent tracks.
- **Uprights:** 12 gauge cold rolled steel; slotted every 1 1/2" (38mm); 1 1/8" (29mm) diameter mounting holes are spaced every 6" (152mm) along the upright.
- **Shelf Supports:** Cold rolled steel; sleeve is high density polyethylene (HDPE).
- **Shelves:** See catalog sheets for shelving specifications [Super Erecta wire and solid, Super Erecta Pro, MetroMax Q, MetroMax 4 and MetroMax i shelves can be used with the SmartWall shelf supports.
- **Finishes:** Standard finishes for components are Metroseal Gray or Green epoxy for dry, wet or damp environments. Metroseal contains built-in Microban® antimicrobial product protection to protect the product from bacteria, mold, mildew, and fungus that cause odors and product degradation.
- **Wire Grids:** 1/4" (6mm) diameter cold rolled steel wire.
- **Grid Bracket Kits:** 14 gauge, Type 304 stainless steel.
- **Grid Accessories:** See catalog sheet 10.43.
- **Cleaning Instructions:** Clean with mild detergents and damp cloths. Do not use abrasive materials because these may damage the protective coatings.

Configurations

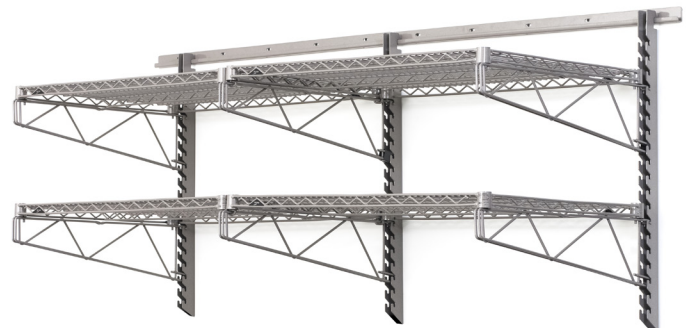
SmartWall offers limitless configurations. The following are examples and meant to demonstrate how to configure the basic product. Accessories can be added to these base units.



Task Station (medium duty)

Components [qty]

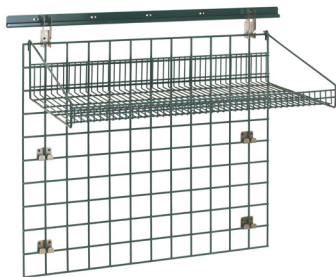
- [1] Wall Track
- [2] Uprights
- [4] Single Shelf Supports
- [2] Super Erecta Shelves
- [1] Grid (same length as shelf)



Adjustable Wall Shelving

Components [qty]

- [2] Wall Tracks
- [3] Uprights
- [4] Single Shelf Supports
- [2] Double (Intermediate) Shelf Supports
- [4] Super Erecta Shelves



Task Station (standard duty)

Components [qty]

- [1] Wall Track
- [1] Grid Bracket Kit (Model No. SWGB1)
- [1] Grid
- [1] Grid Shelf with Retaining Edge (same length as grid)



Task Station (standard duty)

Components [qty]

- [1] Grid Bracket Kit (Model No. SWGB2)
- [1] Grid

Smartwall System

Components

Wall Tracks (minimum one per system)

- Joiner plates and stop fastener hardware included. Does not include hardware to mount wall tracks to the wall.
- Packed one track per carton.
- Replacement joiner plate (1) and stop fastener hardware (2 sets): Model No. RPTRK-HDWE



Wall Track

Model No. Metroseal Green	Model No. Metroseal Gray	Actual Length (in.) (mm)	Actual Depth (in.) (mm)	Actual Width (in.) (mm)	Approx. Pkd. Wt. (lbs.) (kg)
SW40K3	SW40K4	40 1016	3/4 19	1 9/16 40	5.0 2.2
SW56K3	SW56K4	56 1423	3/4 19	1 9/16 40	6.0 2.6
SW72K3	SW72K4	72 1829	3/4 19	1 9/16 40	7.0 3.1



Hardware

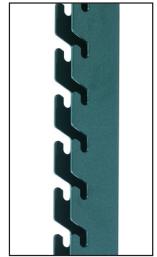
NOTE: Tracks can be cut to length, but Metro does not provide this service. Touch up paint for Metroseal 3 tracks is available. Model No. TP-K2.

Medium-duty configurations consist of wall tracks, uprights, shelf supports, and grids.

Uprights (for medium-duty applications, minimum two per system)

- Built-in slots allow shelf supports and grids to attach without tools or hardware.
- 1 1/2" (38mm) slot spacing allows shelves and grids to be adjusted on 1 1/2" (38mm) increments.
- Sold by the piece; packed two per carton.

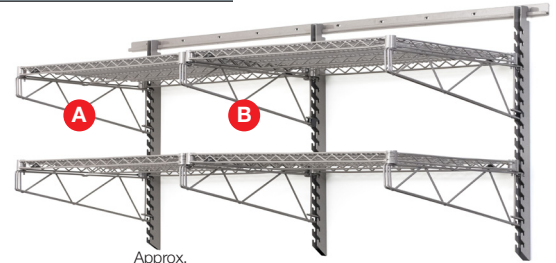
Model No. Metroseal Green	Model No. Metroseal Gray	Number of slots	Actual Length (in.) (mm)	Actual Width (in.) (mm)	Actual Depth (in.) (mm)	Approx. Pkd. Wt. (lbs.) (kg)
SWU15K3	SWU15K4	7	16 406	1 1/8 29	1 7/8 48	1.8 0.8
SWU30K3	SWU30K4	17	31 787	1 1/8 29	1 7/8 48	3.5 1.5
SWU45K3	SWU45K4	26	44 1130	1 1/8 29	1 7/8 48	5.3 2.3
-	SWU72K4	45	71.5 787	1 1/8 29	1 7/8 48	8.5 3.9
-	SWU85K4	54	84.5 1130	1 1/8 29	1 7/8 48	9.6 4.4



Uprights

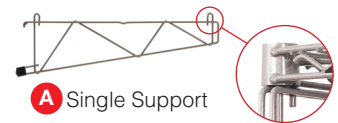
Shelf Supports

- Mount directly to slotted uprights.
- Single shelf supports are used on each end of a stand-alone unit or side-by-side unit (pictured). Sold by the piece.
- Double (intermediate) shelf supports are used when configuring side-by-side wall shelving units. Sold by the piece.



Single Shelf Supports

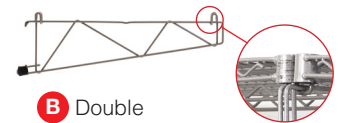
Model No. Metroseal Green	Model No. Metroseal Gray	Fits Shelf Depth	Actual Length (in.) (mm)	Actual Width (in.) (mm)	Actual Height (in.) (mm)	Approx. Pkd. Wt. (lbs.) (kg)
SWS14K3	SWS14K4	14" (355mm)	16 9/16 421	1 1/2 38	8 3/16 208	2.5 1.1
SWS18K3	SWS18K4	18" (457mm)	20 9/16 522	1 1/2 38	8 3/16 208	3.0 1.3
SWS21K3	SWS21K4	21" (530mm)	23 9/16 598	1 1/2 38	8 3/16 208	3.5 1.5
SWS24K3	SWS24K4	24" (610mm)	26 9/16 675	1 1/2 38	8 3/16 208	3.5 1.5



A Single Support

Double (Intermediate) Shelf Supports

SWD14K3	SWD14K4	14" (355mm)	16 9/16 421	1 1/2 38	8 3/16 208	2.5 1.1
SWD18K3	SWD18K4	18" (457mm)	20 9/16 522	1 1/2 38	8 3/16 208	3.0 1.3
SWD21K3	SWD21K4	21" (530mm)	23 9/16 598	1 1/2 38	8 3/16 208	3.5 1.5
SWD24K3	SWD24K4	24" (610mm)	26 9/16 675	1 1/2 38	8 3/16 208	3.5 1.5



B Double (Intermediate) Support

NOTE: Replacement plastic sleeve for shelf support; Model No. RP-SPSLV.

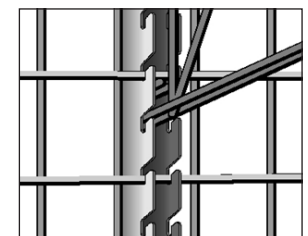
Product Notes:

- When configuring task stations with uprights, choose shelves and grids of the same length. Longer grids may be used but must not overhang the upright by more than 6" (152mm) on either side.
- Grids can be mounted directly behind shelves, but shelf supports and grids cannot occupy the same slots on the upright. Once the grid has been mounted to the upright, the shelf support can be mounted to its own slots and can be adjusted on 3" (76mm) increments within the grid space.
- Calculating the maximum usable wall track mounting space

Stop fasteners are installed at each end of a run of wall tracks and occupy approximately 1" (25mm) of track space per end. Uprights and track-mounted grid brackets must be installed a minimum of 1" (25mm) inboard on the wall track. The maximum usable length of track to install uprights or track-mounted grid brackets is calculated as follows:

Subtract 2" (51mm) from the total length of tracks connected end to end.

Example: Three 72" (1829mm) wall tracks are installed end to end. The maximum usable length of wall track is: $(72" \times 3) - 2" = 214"$ [(1829mm x 3) - 51mm = 5436mm]



Reference: Note "B".



We put space to work.

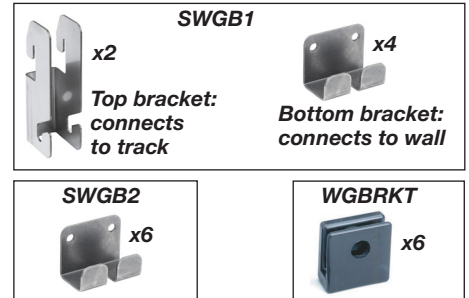
Smartwall System

Standard-duty configurations consist of wall tracks (optional), grid brackets, and grids.

Grid Mounting Brackets (for standard-duty applications without uprights)

- For standard-duty applications, grids may be mounted directly to the track or directly to the wall without a track. One kit required per grid.

Model No.	Description	Approx. Pkd. Wt. (lbs.)	(kg)
SWG1	Bracket kit to connect grid to wall track; includes (2) top and (4) bottom (stainless steel)	2.0	0.9
SWG2	Direct wall mount bracket kit; consists of (6) bottom brackets (stainless steel)	2.0	0.9
WGBRKT	Direct wall mount bracket kit; consists of (6) black plastic brackets	2.0	0.9



Grids

- Grids are a mounting surface for task management accessories.
- See spec sheet 10.43 for grid accessories.

Model No. Metroseal Green	Model No. Metroseal Gray	Width x Length (in.) (mm)		Approx. Pkd. Wt. (lbs.) (kg)	
WG1830K3	WG1830K4	18x30	457x760	7.5	3.3
WG1836K3	WG1836K4	18x36	457x914	9.0	4.1
WG1848BR	WG1848K4	18x48	457x1219	12.0	5.4
WG1848K3	WG1860K4	18x60	457x1524	14.0	6.4
WG2436K3	WG2436K4	24x36	610x914	12.0	5.4
WG2448K3	WG2448K4	24x48	610x1219	15.5	7.0
WG3036K3	WG3036K4	30x36	760x914	12.8	5.8
WG3048K3	WG3048K4	30x48	760x1219	16.5	7.5

NOTE:

- Grids can mount directly to the uprights without brackets.
- Mount a grid directly to the track with bracket kit model SWGB1.
- Mount a grid directly to the wall without a track with bracket kit model SWGB2.

Weight Capacities

Shelves and Grids (not to exceed the total unit capacity of each bay)	Stand Alone Unit (With a wall track, two uprights, and any combination of shelves and grids)	Side-by-side units (With a shared upright)
Super Erecta, Super Erecta Pro, MetroMax Shelf (with shelf supports)	400 lbs. (180kg)	200 lbs. (90kg)
Grid	250 lbs. (113kg)	
Grid shelf with retaining edge	50 lbs. (22.5kg)	

15", 30", 45" tall uprights	Stand Alone Unit (With a wall track, two uprights, and any combination of shelves and grids)	Side-by-side units (With a shared upright)
Wood Studs	400 lbs. (180kg) per bay	200 lbs. (90kg) per bay
Woods Studs (With cross-stud reinforcement)	400 lbs. (180kg) per bay	200 lbs. (90kg) per bay
Plywood: Minimum thickness - 1/2" (13mm)	400 lbs. (180kg) per bay	200 lbs. (90kg) per bay
Concrete	200 lbs. (90kg) per bay	200 lbs. (90kg) per bay
Drywall over Metal Studs	100 lbs. (45kg) per bay	50 lbs. (23kg) per bay
"Environmental room and walk-in cooler walls (appropriately reinforced)"	Consult your Metro Representative	Consult your Metro Representative

72" and 85" tall uprights	Stand Alone Unit (With a wall track, two uprights, and any combination of shelves and grids)	Side-by-side units (With a shared upright)
Wood studs or plywood	800 lbs. (363kg) per bay	400 lbs. (180kg) per bay.



Stand-alone unit



Adjacent units with a shared upright



Grid and grid shelf



an Ali Group Company



The Spirit of Excellence