

Cuisine Series Heavy Duty Combination Top Range

Project _____
 Item _____
 Quantity _____
 CSI Section 11400
 Approved _____
 Date _____

Models

- C36-11R • C36-11S
- C36-11C • C36-11M



Model C36-11R
 18" Front-Fired Hot Top
 and 18" Even-Heat
 Hot Top

Standard Features

- 37,500 BTU/h 18" (457mm) front-fired Hot Top
- 32,500 BTU/h 18" even-heat hot top
- Full-range valve control - 3 per 18" (457mm) section
- Removable lids and rings on front fried hot top section
- Stainless steel front and sides
- Stainless steel front rail
- Stainless steel burner box
- 1-1/4" NPT front gas manifold
- Can be connected individually or in a battery
- 7" (178mm) high stainless steel stub back
- 6" (152mm) stainless steel adj. legs
- Porcelain oven interior
- R model - 4 rack positions
- C model - 3 rack positions
- R model - 1 chrome plated rack
- C model - 3 chrome plated racks
- Fully insulated oven interior
- Safety oven pilot
- Oven thermostat control: 150°-500°F (66°-260°C) (R/C)
- Range base convection oven (C) c/w NEMA 5-15P cord & plug, 1/3 hp motor, 120V 60Hz, 0.6A
- Modular unit (M) can be mounted on Polar Cuisine refrigerated base

Options & Accessories

- Stainless steel oven interior in lieu of porcelain oven interior - NC
- Single or double deck high shelf or back riser
- Full-height stand for modular base with legs or casters
- Stainless steel intermediate shelf for cabinet base
- Stainless steel door(s) for cabinet base units
- Stainless steel back
- Continuous plate shelf, 48" - 72" for battery installations
- Gas shut-off valves - 3/4", 1", 1 1/4" NPT (Specify)
- Gas regulator: 3/4", 1", 1 1/4" NPT (Specify)
- Gas flex hose w/ quick disconnect 3/4", 1", 1 1/4" (Specify)
- Rear gas connection: 3/4" NPT
- Set of (4) flanged feet (for fastening unit to the floor)
- Set of (4) 5" polyurethane non-marking swivel casters w/front brakes
- Set of (4) 6" swivel casters, w/front brakes
- Extra oven rack
- Extension for 1/9 pans

Specifications

Garland Cuisine 36" (914mm) wide Heavy Duty Range Series. Model _____ with total BTU/h rating of _____ when used with natural/propane gas. Stainless steel front and sides. 6" (152mm) legs with adjustable feet.

Ovens - One piece oven door. Porcelain oven interior with a heavy-duty, "keep-cool" door handle. Standard oven comes with a thermostat with a temperature range from 150°F (low) to 500°F (66°-260°C).

Front-Fired Hot Top - 18" (457mm) Section. 12,500 BTU/h each burner with three per section.

Even-Heat Hot Top - 18" (457mm) Section. 32,500 BTU/h each burner with one burner per section.

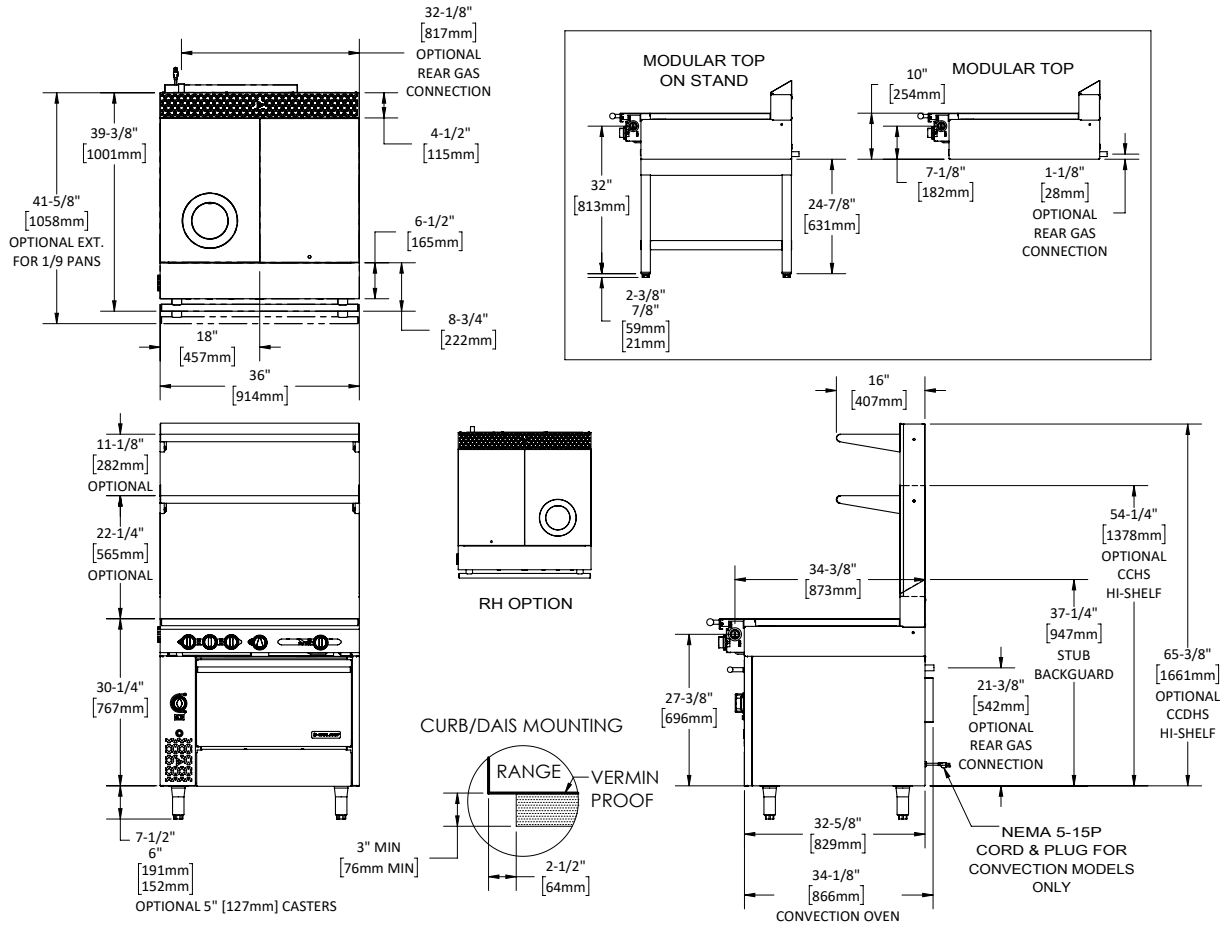
Note: Range-based convection oven models can be located in the middle of a battery, banked back-to-back with other equipment, and can be positioned against a wall.

NOTE: Ranges supplied with casters must be installed with an approved restraining device.



Cuisine Series Heavy Duty Combination Top Range

Cuisine Series Heavy Duty Combination Top Range



Model #	Description	Total BTU/h (NAT. Gas)	Total BTU/h Propane	Shipping	
				Cu Ft	lbs/kg
C36-11R	One (1) FFHT & One (1) EHHT - Standard Oven	110,000	105,000	53	613/278
C36-11C*	One (1) FFHT & One (1) EHHT - Convection Oven	107,000	105,000	53	613/278
C36-11S	One (1) FFHT & One (1) EHHT - Storage Base	70,000	70,000	53	414/188
C36-11M	One (1) FFHT & One(1) EHHT - Modular Top	70,000	70,000	30	329/149

FFHT = Front-Fired Hot Top
 EHHT = Even-Heat Hot Top
 *1/3 Hp motor 120V 60Hz 0.6 Amps c/w Nema 5-15P cord & plug

Combustible Wall Clearance	
Sides	Back
10" (254mm)	6" (152mm)

Individual Burner Ratings (BTU/h)		
Burner	NAT.	PRO.
18" Even-Heat Hot Top	32,500	32,500
18" Front-Fired Hot Top	12,500 (3 per 18" section)	
Standard Oven	40,000	35,000
Convection Oven	37,000	35,000

Interior Dimensions: In (mm)			
Product	Height	Width	Depth
Standard Oven	13-1/2 (323)	26-1/4 (667)	29 (737)
Convection Oven	13-1/2 (323)	26-1/4 (667)	25 (635)
Cabinet Base	20-1/2 (521)	32-1/4 (819)	31 (787)

Gas Pressure	NAT.	PRO.
Minimum Supply	7" WC	11" WC
Manifold Operating Pressure	6" WC	10" WC
Gas Manifold 1-1/4" NPT		

Garland reserves the right to make changes to the design or specifications without prior notice.

Garland Commercial Ranges Ltd.
 1177 Kamato Road,
 Mississauga, Ontario
 L4W 1X4 CANADA

General Inquires 1-905-624-0260
 USA Sales, Parts and Service 1-800-424-2411
 Canadian Sales 1-888-442-7526
 Canada or USA Parts/Service 1-800-427-6668

www.garland-group.com
 7913
 01/24

