



Special Features:

- ✓ Stainless steel front and sides
- ✓ 11 gallons water tank capacity
- ✓ Jet burner with total power of 70,000 BTU (LP)
- ✓ Thermostat controlled (122°F- 212°F)
- ✓ Open water tank with slant surface towards the drain
- ✓ Standby S/S pilot for easy start
- ✓ 6" stainless steel legs
- ✓ Millivolt control valve
- ✓ Prompt response thermostat ensures fast recovery
- ✓ 1" full port drain valve
- ✓ Open pot design allows operators to clean easily
- ✓ Six round blanching baskets included
- ✓ 1/2" NPT rear gas connection

Product Description:

The Empura E-PC11_LP is a 6 basket liquid propane powered pasta cooker with an 11 gallon water tank and thermostatic controls that have a temperature range of 112° F to 212° F. This unit features a durable stainless steel outer construction and includes 6 blanching baskets that provide plenty of space to cook a large amount of pasta. This model stands on 6" stainless steel legs and features an open pot design that allows the operators easy access for cleaning and maintenance.

Intended For Commercial Use Only. Empura assumes no liability for component failure, factory defects or any other damages for units installed in non-commercial foodservice or residential applications.

About Empura Pasta Cookers:

Empura pasta cookers are an economical choice when you are looking to replace old pasta cooking units or expand your kitchen's pasta making capacity. Sturdy stainless steel construction, high power heating elements, and easy to use controls make these pasta cookers a perfect option for business owners. You can count on Empura Pasta Cookers to be solid workhorse models that will power through heavy use in even the busiest kitchens!



TECHNICAL SPECS

Dimensions

Overall Width	15-5/8"
Overall Depth	35-3/8"
Overall Height	46-7/8"
Cabinet Height (Without Legs)	40-5/8"
Drain Valve	1" Full Port

Construction

Gas Inlet Size	1/2" NPT
Gas Inlet Location	Rear
Installation Type	Freestanding
Pot Style	Open
Construction Material	Stainless Steel Front & Sides
Millivolt Control Valve	Included
Removable Legs	6"

Cooking

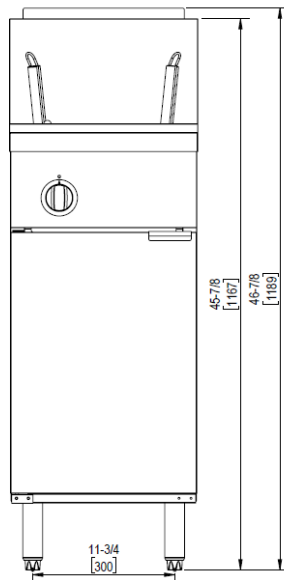
Power Type	Liquid Propane
BTU	70,000
Water Tank Capacity	11 Gal.
Number of Baskets	6
Temperature Control Type	Thermostatic
Temperature Range	112°F - 212°F

Shipping

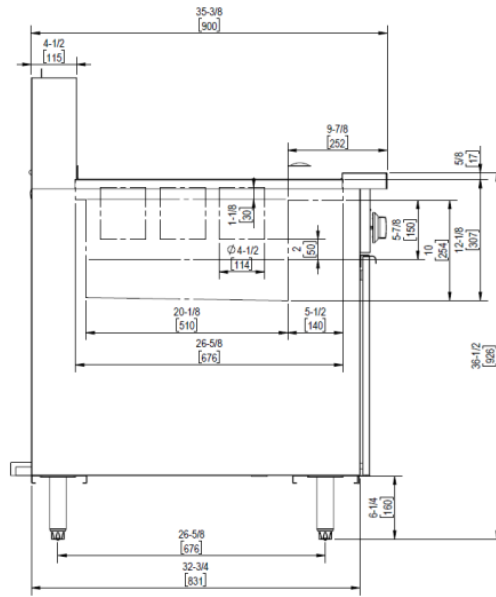
Shipping Weight	157 LB
-----------------	--------

UNIT VIEW

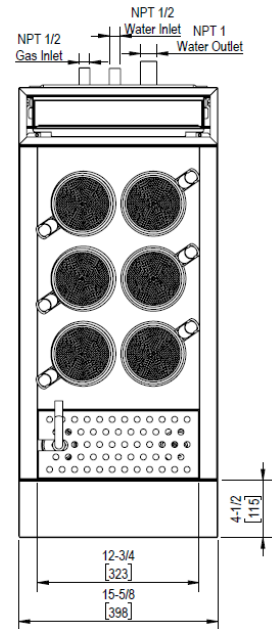
Front View



Side View



Top View



Attention CA Residents: This product can expose you to chemicals including lead, which are known to the State of California to cause cancer, birth defects, or other reproductive harm. For more information, go to www.p65warnings.ca.gov.



1/2" Gas Connection:
This unit comes with a 1/2" gas connection.



Fuel Type:
This unit is made for use with liquid propane.