



T&S BRASS AND BRONZE WORKS, INC.

2 Saddleback Cove / P.O. Box 1088
Travelers Rest, SC 29690

Model No.

B-0305-102A

Item No.

Travelers Rest, SC: 800-476-4103 • Simi Valley, CA: 800-423-0150 • Fax: 864-834-3518 • www.tsbrass.com

This Space for Architect/Engineer Approval

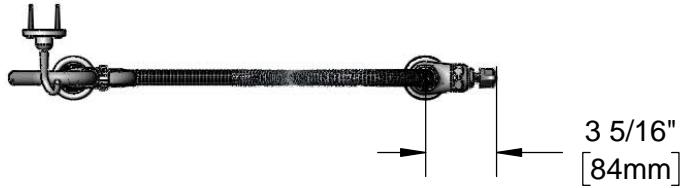
Job Name _____ Date _____

Model Specified _____ Quantity _____

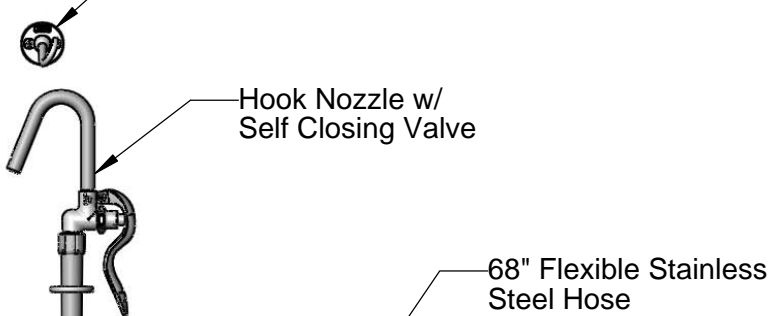
Customer/Wholesaler _____

Contractor _____

Architect/Engineer _____



B-0104-D
Hose Hanger



Hook Nozzle w/
Self Closing Valve

68" Flexible Stainless
Steel Hose

2 5/8"
[67mm]

Quarter-Turn Eterna
Cartridge w/ Spring
Check & Lever Handle
w/ Color Coded Index

Ø2"
[51mm]
Flange

1/2" NPSM
Male Thread



1 5/8"
[41mm]
Maximum
Thickness

150A
Optional Tailpiece &
Nut for 1/4" NPT
Connection (Included)

Rough-In Requirement:
Ø1" [25mm] Mounting Hole

Product Specifications:

Single Hole Single Temperature Deck Mount Faucet, Quarter-Turn Eterna Cartridge w/ Spring Check, Lever Handle, Hook Nozzle Spray Valve, 68" Flexible Stainless Steel Hose & 1/2" NPSM Male Inlet

Product Compliance:

ASME A112.18.1 / CSA B125.1
NSF 61 - Section 9
NSF 372 (Low Lead Content)
EPA Act 2005 Non-Compliant (PRSV)



T&S BRASS AND BRONZE WORKS, INC.

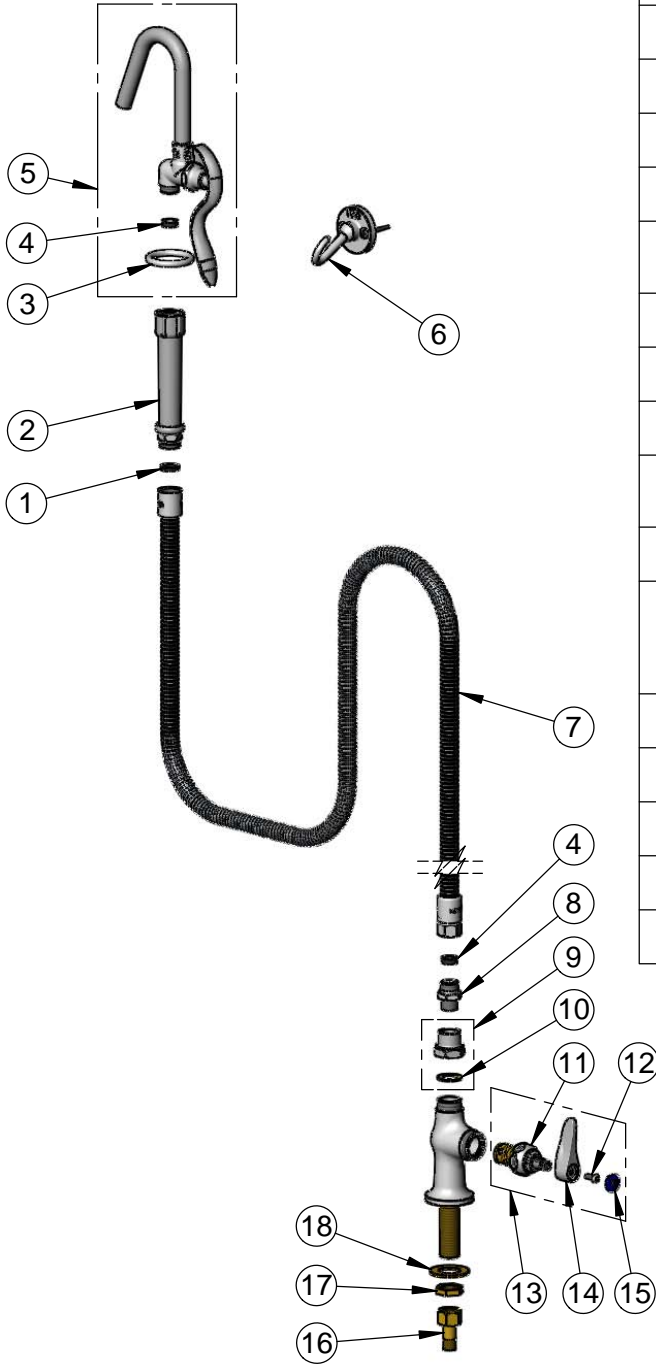
2 Saddleback Cove / P.O. Box 1088
Travelers Rest, SC 29690

Model No.

B-0305-102A

Item No.

Travelers Rest, SC: 800-476-4103 • Simi Valley, CA: 800-423-0150 • Fax: 864-834-3518 • www.tsbrass.com



ITEM NO.	SALES NO.	DESCRIPTION
1	001014-45	Washer, B-0100 Hose Barrel
2	002987-40	Grip Handle
3	000907-45	Spray Valve Hold Down Ring
4	010476-45	#27 Washer
5	002851-40	Hook Nozzle Spray Valve
6	B-0104-D	Dummy Wall Hook
7	B-0068-H2A	68" Flexible Stainless Steel Hose Less Handle
8	053A	Adapter, 3/8" NPT Male
9	B-0413	Adapter, Swivel-to-Rigid
10	001049-45	Washer
11	012443-40NS	Quarter-Turn Eterna Cartridge w/ Spring Check, RTC
12	000925-45	Lab Handle Screw
13	019639-40	Quarter-Turn Eterna Cartridge RTC w/ Spring Check, Handle, Blue Index & Screw
14	001638-45NS	Lever Handle (New Style)
15	018506-19NS	Blue Button Index, Press-in
16	150A	1/4" NPT Male Tailpiece & Nut
17	002954-45	Shank Lock Nut
18	000999-45	Brass Lock Washer

Product Specifications:

Single Hole Single Temperature Deck Mount Faucet, Quarter-Turn Eterna Cartridge w/ Spring Check, Lever Handle, Hook Nozzle Spray Valve, 68" Flexible Stainless Steel Hose & 1/2" NPSM Male Inlet

Product Compliance:

ASME A112.18.1 / CSA B125.1
NSF 61 - Section 9
NSF 372 (Low Lead Content)
EPA Act 2005 Non-Compliant (PRSV)