

Project: _____	AIA# _____
Item #: _____ Qty: _____	SIS# _____
Model #: _____	

Dry Storage Cabinets

DS24, DS40, DS48, DS60,
DS72, DS80, DS96

Configurable Options

Door Style & Finish:

- Black vinyl-clad
- Stainless steel
- Jeweled stainless
- Laminated
- Unlaminated

Top Style:

- No finished top
- Stainless top

Left and Right Side Finish:

- Black vinyl-clad
- Stainless steel

Door Hinge Location (*specify for each door*):

- Left or Right

Door Handle:

- Signature
- Pull-tab
- Tube



DS24
with stainless steel door and top



Intertek

4004503

Conforms to NSF/ANSI STD 2

Standard Features

- Locking door(s)
- Eco-friendly, foamed-in-place insulated sides and door (excluding DS24 sides)
- Stainless steel sub top (excluding DS24, which has an open top)
- Black vinyl-clad steel exterior front and sides
- Two adjustable, coated-wire shelves per door section (DS24 excluded)
- DS24 includes 16 gauge galvanized shelves

To view underbar installation instructions, please visit: https://www.glastender.com/PDF/F-750-165_Underbar_Installation_Instructions.pdf

To view cleaning and care instructions, please visit: https://www.glastender.com/PDF/F-423-011_ss_clean_care.pdf

Glastender, Inc. • 5400 N Michigan Rd • Saginaw, MI • 48604-9780 989.752.4275 • 800.748.0423 • Fax 989.752.4444 www.glastender.com	Approval/Notes:
<small>Specifications subject to change without notice. For current specifications please visit our website.</small>	

Dry Storage Cabinet

Specifications

		DS24	DS40	DS48	DS60	DS72	DS80	DS96
Dimensions	Length	24"	40"	48"	60"	72"	80"	96"
	Number of Sections	1	2	2	3	3	4	4
	Door Opening	21"	16"	20"	16"	20"	16"	20"
Weight Bearing Capacity		Countertops and other accessories should not exceed 500 pounds per door						

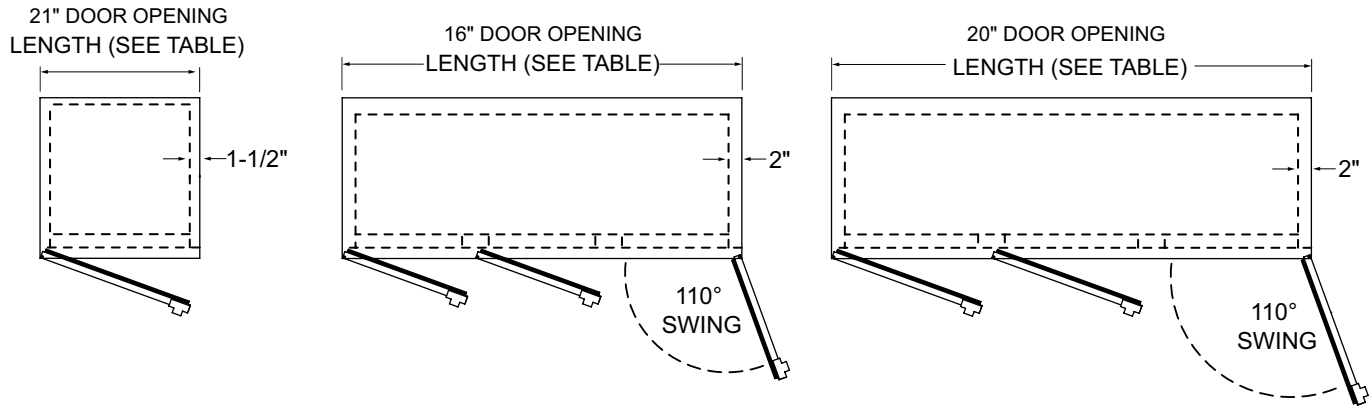
Materials

- Stainless steel parts include: exterior sub-top (DS24 excluded), interior, front of cabinet, hinges, hinge and lock brackets, and optional legs
- Black vinyl-clad steel parts include: standard sides, doors and compressor cover
- Galvanized steel parts: interior
- Zinc plated CR steel parts include: leg sockets

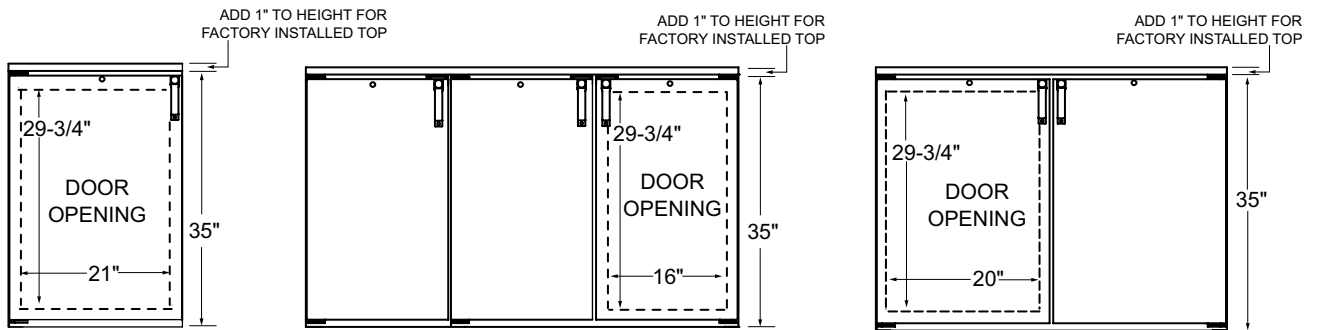
Dry Storage Cabinets

Drawings

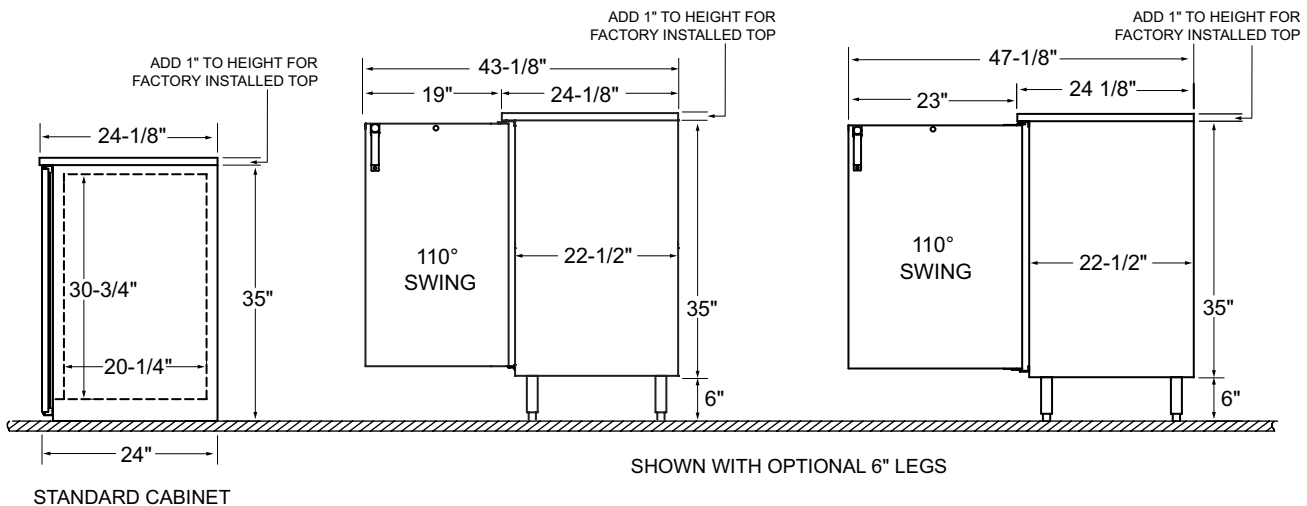
PLAN VIEW



FRONT VIEW



SIDE VIEWS



OPTIONAL LEGS AND CASTERS



5400 N Michigan Rd • Saginaw, MI • 48604-9780
 989.752.4275 • 800.748.0423 • Fax 989.752.4444
 www.glastender.com

Printed in USA