

ITEM NO. _____
 PROJECT _____
 LOCATION _____
 DATE _____ QTY. _____

BEM/BEL SERIES

Remote
 Endless Glass Door Merchandisers

MED. TEMP MODELS

- BEM-2-30
- BEM-3-30
- BEM-4-30
- BEM-5-30

LOW TEMP MODELS

- BEL-2-30
- BEL-3-30
- BEL-4-30
- BEL-5-30



BEM-3-30/BEL-3-30 (shown with ends installed)



FEATURES

CONSTRUCTION

- Front air screen blocks warm outside air for fewer required defrosts and greater energy efficiency
- Designed from the ground up to fit through an 80" tall door opening
- Narrow footprint and shallow bumper for minimum intrusion into sales space
- Cam-locked panels on back, top and bottom for added strength and rigidity to the case
- 2-1/2" thick back wall, bottom, ends and partitions
- Ends must be ordered separately
- Baked-on polyester smooth steel finish on exterior and interior
- Five cantilever solid shelves with price tag molding per door
- Shelves rated to support 135 lbs. each
- Product Stop feature to prevent product from falling behind shelves
- Zero ODP insulation
- Drain piped to base for easy connection to drain line or condensate pump (optional pump ordered separately)
- Standard electronic controller

DOORS

- 30" wide glass doors
- Self-closing door hinge with adjustable torsion control
- Standard black door and frame

REFRIGERATION

- All models designed for remote refrigeration systems
- EC fan motors are up to 65% more efficient than standard motors with less waste heat present inside the cold space
- Refrigerant: R-448A/R-449A
- Factory tested refrigeration system
- Heavy-duty copper tube evaporator coil
- Electric defrost standard on low temp models
- Pre-mounted expansion valve
- Temperature range:
 - BEM models: 34° to 41°F (1° to 5°C)
 - BEL models: 0° to -15°F (18° to -26°C)
- R-factor (insulation efficiency rating): 20.0

WARRANTY

- Two year limited parts and labor on cabinet with 18 months parts and labor on condensing unit (optional extended four year compressor warranties available)

OPTIONS

- Anti-fog film on low temp Thermoseal® glass doors (factory applied) keeps doors clear even after opening

TECHNICAL SPECIFICATIONS

Models	BEM-2-30	BEM-3-30	BEM-4-30	BEM-5-30	BEL-2-30	BEL-3-30	BEL-4-30	BEL-5-30
Crated Weight (lbs) (kg)*	755 (343)	1375 (625)	1670 (759)	2000 (909)	1085 (493)	1325 (602)	1785 (811)	1955 (889)
Overall Height (in) (mm)**	81-7/8 (2080)	81-7/8 (2080)	81-7/8 (2080)	81-7/8 (2080)	81-7/8 (2080)	81-7/8 (2080)	81-7/8 (2080)	81-7/8 (2080)
Overall Width (in) (mm)***	62 (1581)	92-7/16 (2354)	122-7/8 (3102)	153-5/16 (3900)	62 (1581)	92-7/16 (2354)	122-7/8 (3102)	153-5/16 (3900)
Overall Depth (in) (mm)****	40-3/8 (1026)	40-3/8 (1026)	40-3/8 (1026)	40-3/8 (1026)	40-3/8 (1026)	40-3/8 (1026)	40-3/8 (1026)	40-3/8 (1026)
Number of Doors	2	3	4	5	2	3	4	5
Number Of Shelves	10	15	20	25	10	15	20	25
Shelf Depth (in) (mm)	23 (584)	23 (584)	23 (584)	23 (584)	23 (584)	23 (584)	23 (584)	23 (584)
Product Facing (sq. ft.)	28.2	42.0	55.9	69.7	28.2	42.0	55.9	69.7
Pack-Out (cu. ft.)	54.1	80.6	107.1	133.7	54.1	80.6	107.1	133.7
Number Of Interior Lights	3	4	5	6	3	4	5	6

*Crated weight includes cabinet ends. Total weight will depend on condensing unit(s) selected for individual case or line-up. See page 4 for condensing unit weights.

**Includes removable skid runner for installation purposes. Without runner: 79-3/4"H.

***Add 2-1/2" (64 mm) to length for each end or insulated partition. Also allow an additional 1" clearance for case and assembly dimensional tolerance stack-up.

****Depth includes end panels, door handles and required rear piping stand-offs.

NOTE: All models furnished with R-448A/R-449A expansion valve unless otherwise specified.

When ordering multi-cabinet line-ups, please note:

- Pre-wired cabinet-to-cabinet electrical terminal block connectors are standard
- A 2-1/2" thick partition is required between each endless module if:
 - Each utilizes its own condensing unit and
 - One module is a freezer and one is a cooler
- A 1/16" thick partition is required between each module if:
 - Each utilizes its own condensing unit and
 - Modules are the same temp
- Joining kits for linking together modules are standard
- Please allow an additional 1" clearance for case and assembly dimensional tolerance stack-up

ELECTRICAL*
120/208-230VAC/60/1 INPUT CIRCUIT (REQUIRES 4-WIRE 208-230 SERVICE CONNECTION)

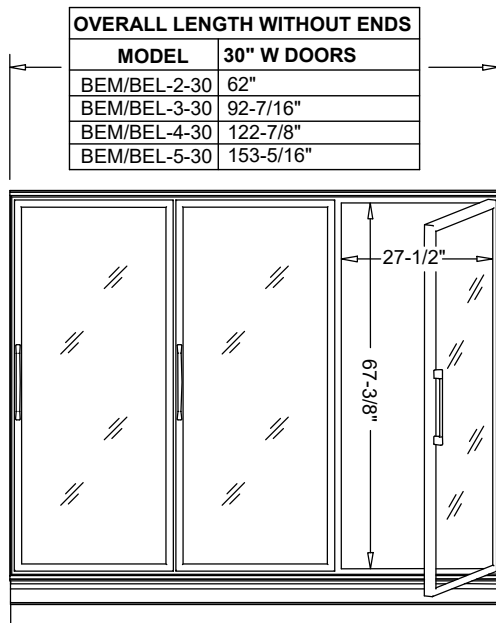
MODEL	120 VOLT, 1 PHASE			220 VOLT, 1 PHASE		MCA	MOP	MIN. WIRE SIZE
	LIGHTS	HEATERS	FANS	FANS	DEFROST			
BEM-2-30	0.3	0.63	0.4	N/A	N/A	7.5	15.00	12 GA.
BEM-3-30	0.45	0.83	0.6	N/A	N/A	8.3	15.00	12 GA.
BEM-4-30	0.6	1.05	0.8	N/A	N/A	9.3	15.00	12 GA.
BEM-5-30	0.75	1.28	1.0	N/A	N/A	10.1	15.00	12 GA.
BEL-2-30	0.3	0.95	0.4	N/A	6.0	12.8	15.00	12 GA.
BEL-3-30	0.45	1.36	0.6	N/A	9.1	16.8	20.00	12 GA.
BEL-4-30	0.6	1.82	0.8	N/A	12.2	22.1	25.00	10 GA.
BEL-5-30	0.75	2.32	1.0	N/A	15.2	27.5	30.00	10 GA.

*If condensate evaporator pan accessory is used, it must be field installed and requires a dedicated 20 amp, 120 volt circuit.

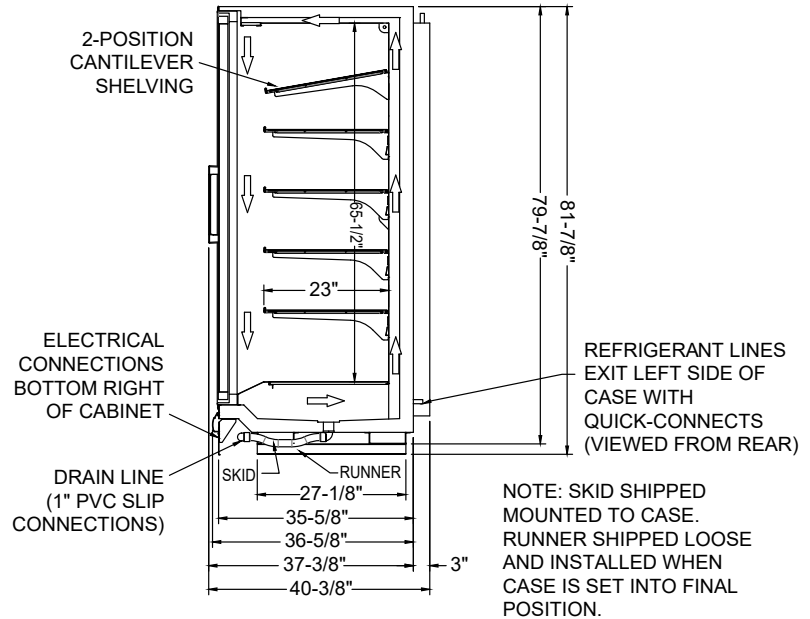
LISTINGS

HOOKUP

Hardwire, remote refrigeration



ELEVATION VIEW



SIDE VIEW

MODULES REQUIRED FOR 30" WIDE DOOR LINEUPS & BTU PERFORMANCE DATA

NO. OF DOORS	MODULES REQUIRED				TOTAL OVERALL LENGTH (IN.) WITH ONE PAIR OF 2-1/2" ENDS	+20°F SUCTION MIN. BTUs (75°F STORE, 55% RH, +35°F AVERAGE PRODUCT TEMP.)	-11°F SUCTION MIN. BTUs (75°F STORE, 55% RH, -3°F AVERAGE PRODUCT TEMP.)	-18°F SUCTION MIN. BTUs (75°F STORE, 55% RH, -12°F AVERAGE PRODUCT TEMP.)
	2 DOOR	3 DOOR	4 DOOR	5 DOOR				
2	1				67	2800	3300	3550
3		1			97-7/16	3750	4750	5125
4			1		127-7/8	4600	6150	6550
5				1	158-5/16	5750	7625	8300
6		2			189-13/16	6900	9150	9960
7	1			1	220-1/4	8050	10,675	11,620
8		1		1	250-3/4	9200	12,200	13,280
9			1	1	281-1/8	10,350	13,725	14,940
10				2	311-9/16	11,500	15,250	16,600
11		2		1	343-1/16	12,650	16,775	18,260
12	1			2	373-1/2	13,800	18,300	19,920
13		1		2	403-15/16	14,950	19,825	21,580
14			1	2	434-3/8	16,100	21,350	23,240
15				3	464-13/16	17,250	22,875	24,900
16		2		2	496-5/16	18,400	24,400	26,560
17	1			3	526-3/4	19,550	25,925	28,220
18		1		3	557-3/16	20,700	27,450	29,880
19			1	3	587-1/2	21,850	28,975	31,540
20				4	618-1/16	23,000	30,500	33,200
21		2		3	649-9/16	24,150	32,025	34,860
22	1			4	680	25,300	33,550	36,520
23		1		4	710-7/16	26,450	35,075	38,180
24			1	4	740-7/8	27,600	36,600	39,840
25				5	771-5/16	28,750	38,125	41,500

REQUIRED CONDENSING UNITS

Use this chart to determine the correct condensing unit for your endless lineup. Replace * with suffix "B" for one phase or "C" for three phase model. Condensing unit is less timer and relies on the case to control defrost functions.

NO. OF DOORS	+35°F BOX TEMP, +20°F SST 75°F AIR CONDITIONED STORE, 55% RH	-10°F BOX TEMP, -20°F SST 75°F AIR CONDITIONED STORE, 55% RH
	CONDENSING UNIT REQUIRED FOR 110°F AMBIENT TEMP	CONDENSING UNIT REQUIRED FOR 110°F AMBIENT TEMP
2	MHMD002EB	MSLD012E*
3	MHMD003EB	MSLD020E*
4	MHMD005EB	MSLD020E*
5	MHMD007EB	MSLD025E*
6	MHMD008EB	MSLD030E*
7	MHMD008EB	MSLD035E*
8	MHMD010E*	MSLD040E*
9	MHMD012E*	MSLD050E*
10	MHMD012E*	MSLD050E*
11	MSMD015E*	MSLD060EC
12	MSMD017E*	MSLD060EC
13	MSMD017E*	MSLD060EC
14	MSMD020E*	MSLD075EC
15	MSMD020E*	MSLD075EC

This chart is valid for the following conditions: (1) glass doors with LED lights, (2) 75°F store with 55% relative humidity, (3) Refrigeration line run of 100' or less. Please consult factory for other operating conditions.

CONDENSING UNIT SHIP WEIGHTS

Replace * with suffix "B" for one phase or "C" for three phase model.

MODEL	SHIP WEIGHT (LB) (KG)
MHMD002EB	180 (82)
MHMD003EB	180 (82)
MHMD005EB	180 (82)
MHMD007EB	180 (82)
MHMD008EB	180 (82)
MHMD010E*	180 (82)
MHMD012E*	240 (109)
MSLD010E*	180 (82)
MSLD012E*	180 (82)
MSLD015E*	180 (82)
MSLD020E*	240 (109)
MSLD025E*	250 (113)
MSLD030E*	250 (113)
MSLD035E*	250 (113)
MSLD040E*	250 (113)
MSLD050E*	250 (113)
MSLD060EC	300 (136)
MSLD075EC	540 (245)
MSMD015E*	240 (109)
MSMD017E*	240 (109)
MSMD020E*	240 (109)

NOTE: Cabinet designed for optimum performance in air-conditioned area at 75°F ambient and 55% relative humidity. All specifications within this publication subject to change without notice.