

## "PRB-C-2" POT RACKS - CEILING MOUNT

*Fits 36"-72" Tables, Stainless Steel Construction w/Stainless Steel Hooks*

**FEATURES:**

- Type 300 Stainless Steel
- All Racks Provided With Type 300 Stainless Steel Hooks (See Table For Quantity Per Size)
- Welded Setup
- Standard Ceiling Mount
- Recommended Ceiling Height 10'

**SPECIFICATIONS:**

- Made Of 3/16"x2" Stainless Steel Flat Bar
- Uprights: 1-1/4"x1/8" Thick Stainless Steel Flat Bar, Type 300 Stainless Steel

**CERTIFICATIONS:**

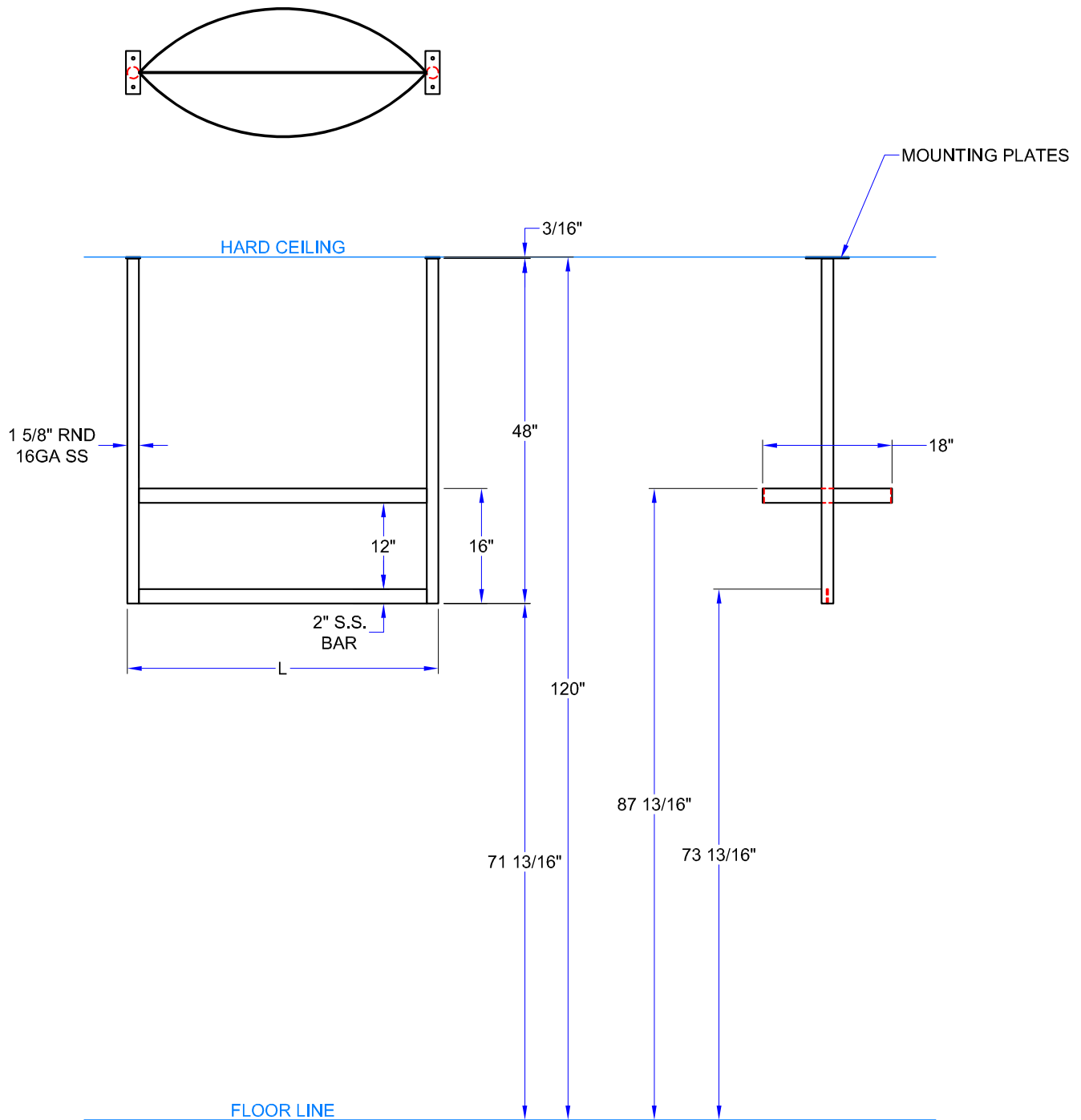


### "PRB-C-2" POT RACK - CEILING MOUNT

MODEL	# OF UPRIGHTS	TABLE LENGTH	LENGTH	# OF HOOKS	WT. (LBS)
PRB01A-C	2	36"	31-1/4"	9	25
PRB01-C	2	48"	43-1/4"	12	26
PRB02-C	2	60"	55-1/4"	15	30
PRB03-C	2	72"	67-1/4"	18	35

ALL DIMENSIONS ARE TYPICAL. TOLERANCE +/- .500". JOHN BOOS & CO. RESERVES THE RIGHT TO CHANGE SPECIFICATIONS WITHOUT NOTICE.

# DETAILED SPECIFICATIONS



## "PRB-C-2" POT RACK - CEILING MOUNT

MODEL	# OF UPRIGHTS	TABLE LENGTH	LENGTH	# OF HOOKS	WT. (LBS)
PRB01A-C	2	36"	31-1/4"	9	25
PRB01-C	2	48"	43-1/4"	12	26
PRB02-C	2	60"	55-1/4"	15	30
PRB03-C	2	72"	67-1/4"	18	35

ALL DIMENSIONS ARE TYPICAL. TOLERANCE +/- .500". JOHN BOOS & CO. RESERVES THE RIGHT TO CHANGE SPECIFICATIONS WITHOUT NOTICE.