



Profit from the Eagle Advantage®

Specification Sheet

Short Form Specifications

Eagle 2200 Series Under Bar Sink, model _____.
Top, sink bowls, front and backsplash are heavy gauge type 304 stainless steel. Sinks are 10" x 14" x 10" deep with 1½" drains and standpipes. 4½" high backsplash with provisions for faucet with 10" spout. 1½" O.D. galvanized tubular legs with adjustable bullet feet.



model #B5C-22 underbar sink

Options / Accessories

- Stainless steel leg kits (see below)
- Leg & faucet kit (see below)
- Speed rail

Item No.: _____
 Project No.: _____
 S.I.S. No.: _____

2200 Series Underbar Sinks

MODELS:

- B3L-2-22 B5R-22
- B3R-2-22 B5C-22
- B4C-2-22 B6C-22
- B4L-2-22 B6C-4-22
- B4R-2-22 B7C-22
- B4L-22 B7C-4-22
- B4R-22 B8C-22
- B5L-22 B8C-4-22

Design and Construction Features

- Bullnose front edge.
- All units are modular, allowing for custom configuration using standard components.
- Top, front, and work surfaces are heavy gauge type 304 series stainless steel construction.
- Ends and back panels are galvanized steel.
- 10" x 14" x 10" (254 x 356 x 254mm) bowls.
- 1½" (38mm) drain with removable standpipe on sinks.
- Backsplash includes rear deck.
- Splash mount 4" (102mm) center faucet with 10" (254mm) spout.
- Available in a variety of sizes, from 3' to 8' (914 to 2438mm) length.
- Models offered with two-, three-, or four-compartment sinks, all of which are one-piece and deep-drawn.
- 24" (610mm) front-to-back.

Optional Kits for Underbar Sinks	
add suffix #	description
-SL	stainless steel leg assemblies
-SLF	stainless steel leg assemblies & stainless steel feet
-SLG	stainless steel leg assemblies & stainless steel gussets
-SLGF	stainless steel leg assemblies, stainless steel feet & gussets
-LF *	stainless steel legs and T&S faucet

* Includes #305540 stainless steel legs and #313302 T&S faucet

EAGLE GROUP
 100 Industrial Boulevard, Clayton, DE 19938-8903 USA
 Phone: 302-653-3000 • 800-441-8440 • Fax: 302-653-2065
www.eaglegrp.com
www.eaglegrpnews.com
www.eaglemhc.com



For custom configuration or fabrication needs, contact our **SpecFAB® Division**.
 Phone: 302-653-3000 • Fax: 302-653-2065 • e-mail: quotes@eaglegrp.com

EG40.14 Rev. 08/23

Spec sheets available for viewing, printing or downloading from our online literature library at our websites

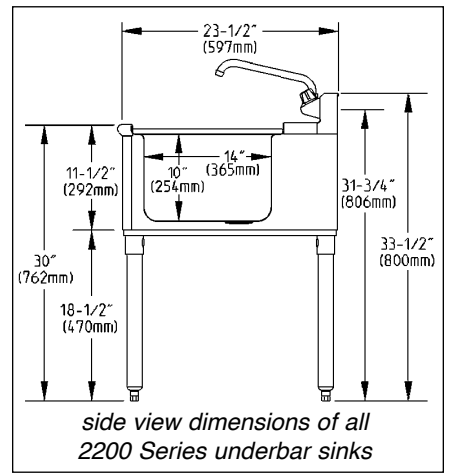
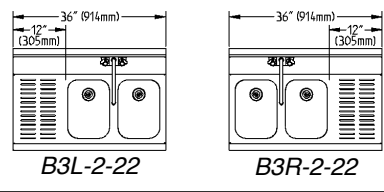


Item No.: _____
 Project No.: _____
 S.I.S. No.: _____

2200 Series Underbar Sinks

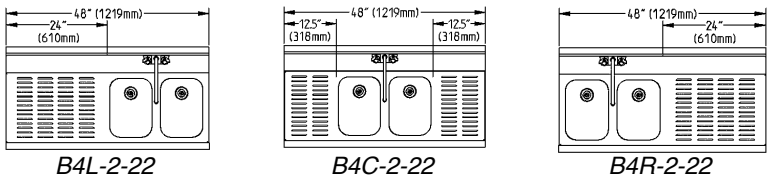
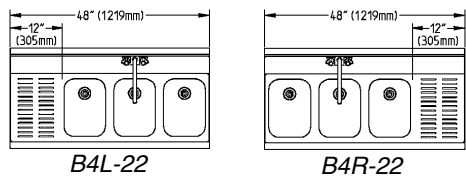
3' (914mm) length

model #	weight	
	lbs.	kg
B3L-2-22	70	31.8
B3R-2-22	70	31.8



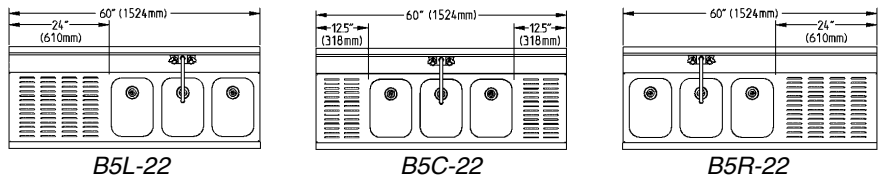
4' (1219mm) length

model #	weight	
	lbs.	kg
B4L-22	70	31.8
B4R-22	70	31.8
B4C-2-22	76	34.5
B4L-2-22	76	34.5
B4R-2-22	76	34.5



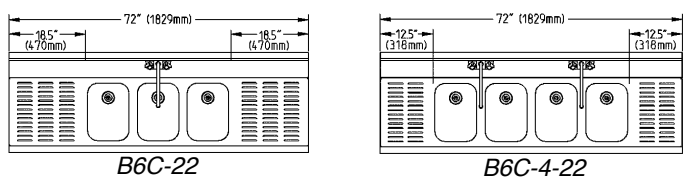
5' (1524mm) length

model #	weight	
	lbs.	kg
B5L-22	78	35.4
B5R-22	78	35.4
B5C-22	78	35.4



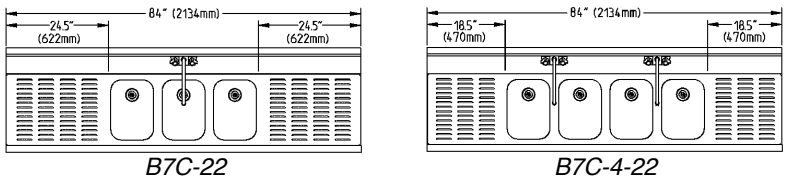
6' (1829mm) length

model #	weight	
	lbs.	kg
B6C-22	93	42.2
B6C-4-22	100	45.4



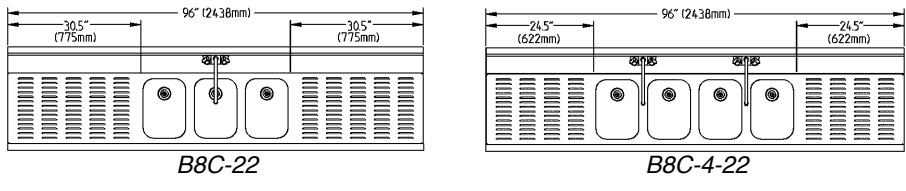
7' (2134mm) length

model #	weight	
	lbs.	kg
B7C-22	100	45.4
B7C-4-22	113	51.3



8' (2438mm) length

model #	weight	
	lbs.	kg
B8C-22	118	53.5
B8C-4-22	123	55.8



EAGLE GROUP
 100 Industrial Boulevard, Clayton, DE 19938-8903 USA
 Phone: 302-653-3000 or 800-441-8440 • Fax: 302-653-2065
 www.eaglegrp.com • www.eaglegrpnews.com • www.eaglehmc.com

Printed in U.S.A.
 ©2023 by Eagle Group
 Rev. 08/23

Spec sheets available for viewing, printing or downloading from our online literature library at our websites

Although every attempt has been made to ensure the accuracy of the information provided, we cannot be held responsible for typographical or printing errors. Information and specifications are subject to change without notice. Please confirm at time of order.