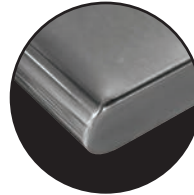




**STAINLESS STEEL**  
**WORK TABLES**  
**SUPER SAVER- Flat Top - OPEN BASE Style**



Item #: _____ Qty #: _____
Model #: _____
Project #: _____



**Rolled Rim Edges  
on Front & Back and  
Square Side Edges**



**CROSS-BRACING  
Ensure Stability**

**FEATURES:**

Top is furnished with 1-5/8" sanitary rolled rim edges on front & back and square side edges.

To reinforce and maintain a level working surface, 24" wide tables are supplied with TWO hat channels and 30" and 36" wide tables are supplied with THREE hat channels.

Pre-engineered welded angle adapters insure ease of future drawer installation.

**CONSTRUCTION:**

All TIG welded. Exposed weld areas polished to match adjacent surfaces.

Entire top mechanically polished to a satin finish.

Top is sound deadened.

Roll formed embossed galvanized hat channels are secured to top by means of structural adhesive and weld studs.

Gussets welded to support hat sections.

**MATERIAL:**

**TSAG-SERIES: Stainless Steel Legs - Open Base**

**TOP:** 16 gauge stainless steel type "430" series.

**CROSS-BRACING:** Rear: 1 5/8" dia. tubular stainless steel.  
Sides: 1 1/4" dia. tubular stainless steel.

**LEGS:** 1 5/8" diameter tubular galvanized steel.  
1" adjustable plastic bullet feet.

**TAG-SERIES: Galvanized Legs - Open Base**

**TOP:** 16 gauge stainless steel type "430" series.

**CROSS-BRACING:** Rear: 1 5/8" dia. tubular galvanized steel.  
Sides: 1 1/4" dia. tubular galvanized steel.

**LEGS:** 1 5/8" diameter tubular, galvanized steel.  
1" adjustable plastic bullet feet.  
Galvanized steel gussets.

**TSAG-Series:  
Stainless Steel Legs & Cross-Bracing**

L	24" Wide	30" Wide	36" Wide
30"	TSAG-240	TSAG-300	
24"	TSAG-242	TSAG-302	TSAG-362
36"	TSAG-243	TSAG-303	TSAG-363
48"	TSAG-244	TSAG-304	TSAG-364
60"	TSAG-245	TSAG-305	TSAG-365
72"	TSAG-246	TSAG-306	TSAG-366
84"	TSAG-247	TSAG-307	TSAG-367
96"	TSAG-248	TSAG-308	TSAG-368
108"	TSAG-249	TSAG-309	TSAG-369
120"	TSAG-2410	TSAG-3010	TSAG-3610
132"	TSAG-2411	TSAG-3011	TSAG-3611
144"	TSAG-2412	TSAG-3012	TSAG-3612



**TAG-Series:  
Galvanized Steel Legs & Cross-Bracing**

L	24" Wide	30" Wide	36" Wide
30"	TAG-240	TAG-300	
24"	TAG-242	TAG-302	TAG-362
36"	TAG-243	TAG-303	TAG-363
48"	TAG-244	TAG-304	TAG-364
60"	TAG-245	TAG-305	TAG-365
72"	TAG-246	TAG-306	TAG-366
84"	TAG-247	TAG-307	TAG-367
96"	TAG-248	TAG-308	TAG-368
108"	TAG-249	TAG-309	TAG-369
120"	TAG-2410	TAG-3010	TAG-3610
132"	TAG-2411	TAG-3011	TAG-3611
144"	TAG-2412	TAG-3012	TAG-3612

**Create Your Own Efficient Workstation with the Available Standard Accessories (Visit Section K)**



**Customer Service Available To Assist You 1-800-645-3166 8:30 am - 7:00 pm E.S.T.**

For Orders & Customer Service:  
 Email: [customer@advancetabco.com](mailto:customer@advancetabco.com) or Fax: 631-242-6900

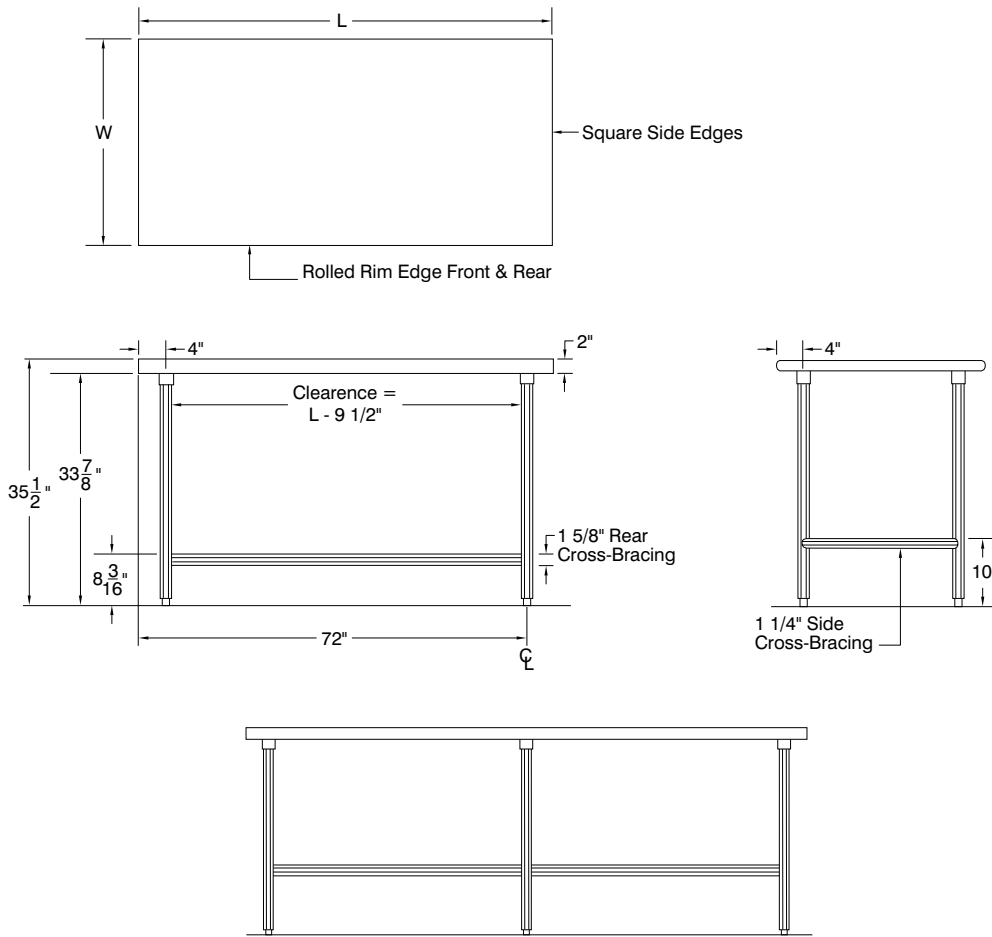
For Smart Fabrication™ Quotes:  
 Email: [smartfab@advancetabco.com](mailto:smartfab@advancetabco.com) or Fax: 631-586-2933

# DIMENSIONS and SPECIFICATIONS

ALL DIMENSIONS ARE TYPICAL TOL ± .500"

All Units Shipped Unassembled (KD) for Reduced Shipping Costs.

## SUPER SAVER- Flat Top - OPEN BASE Style TSAG & TAG Series



Units 8 ft. and larger are furnished with six (6) legs

### TSAG-Series: Stainless Steel Legs & Cross-Bracing

### TAG-Series: Galvanized Steel Legs & Cross-Bracing

L	24" Wide	Wt.	30" Wide	Wt.	36" Wide	Wt.
30"	TSAG-240	42 lbs.	TSAG-300	52 lbs.		
24"	TSAG-242	25 lbs.	TSAG-302	47 lbs.	TSAG-362	75 lbs.
36"	TSAG-243	53 lbs.	TSAG-303	59 lbs.	TSAG-363	75 lbs.
48"	TSAG-244	64 lbs.	TSAG-304	72 lbs.	TSAG-364	85 lbs.
60"	TSAG-245	74 lbs.	TSAG-305	85 lbs.	TSAG-365	96 lbs.
72"	TSAG-246	85 lbs.	TSAG-306	93 lbs.	TSAG-366	108 lbs.
84"	TSAG-247	103 lbs.	TSAG-307	113 lbs.	TSAG-367	127 lbs.
96"	TSAG-248	114 lbs.	TSAG-308	126 lbs.	TSAG-368	140 lbs.
108"	TSAG-249	130 lbs.	TSAG-309	150 lbs.	TSAG-369	165 lbs.
120"	TSAG-2410	227 lbs.	TSAG-3010	261 lbs.	TSAG-3610	261 lbs.
132"	TSAG-2411	251 lbs.	TSAG-3011	268 lbs.	TSAG-3611	290 lbs.
144"	TSAG-2412	266 lbs.	TSAG-3012	283 lbs.	TSAG-3612	305 lbs.

L	24" Wide	Wt.	30" Wide	Wt.	36" Wide	Wt.
30"	TAG-240	42 lbs.	TAG-300	52 lbs.		
24"	TAG-242	25 lbs.	TAG-302	47 lbs.	TAG-362	770 lbs.
36"	TAG-243	53 lbs.	TAG-303	59 lbs.	TAG-363	75 lbs.
48"	TAG-244	64 lbs.	TAG-304	72 lbs.	TAG-364	85 lbs.
60"	TAG-245	74 lbs.	TAG-305	85 lbs.	TAG-365	96 lbs.
72"	TAG-246	85 lbs.	TAG-306	93 lbs.	TAG-366	108 lbs.
84"	TAG-247	103 lbs.	TAG-307	113 lbs.	TAG-367	127 lbs.
96"	TAG-248	114 lbs.	TAG-308	126 lbs.	TAG-368	140 lbs.
108"	TAG-249	130 lbs.	TAG-309	150 lbs.	TAG-369	165 lbs.
120"	TAG-2410	227 lbs.	TAG-3010	261 lbs.	TAG-3610	261 lbs.
132"	TAG-2411	251 lbs.	TAG-3011	268 lbs.	TAG-3611	290 lbs.
144"	TAG-2412	266 lbs.	TAG-3012	283 lbs.	TAG-3612	305 lbs.

