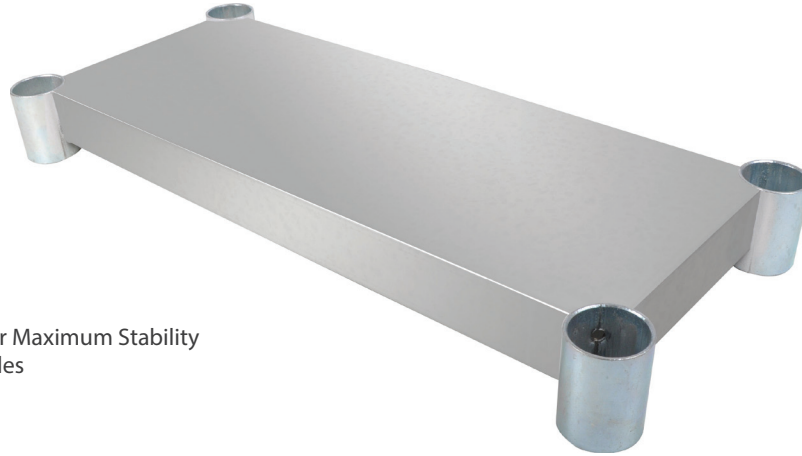


Stainless Steel Undershelf

Stainless Steel Work Table Undershelf



Use your smart phone to scan the above QR code to visit our website:
www.bk-resources.com



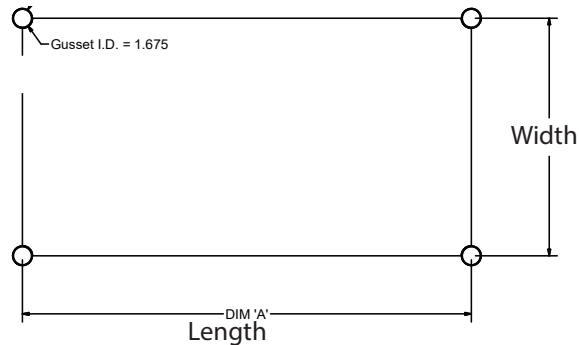
Features:

- Each Corner Brace Includes 2 Set Screws for Maximum Stability
- Specifically Designed for BK Resources Tables

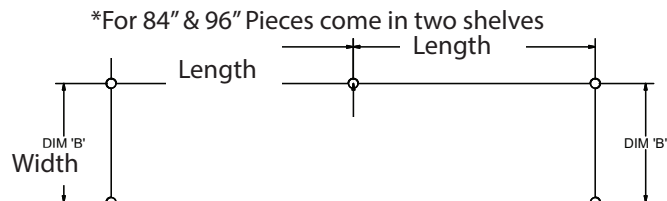
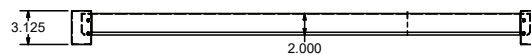
Material:

- T-304 18 ga. Stainless Steel

Model	Fits Tables (l x w)	(l x w)	*Shelf Capacity
SVTS-1824	24" x 18"	17.5" x 10"	400
SVTS-1830	30" x 18"	23.5" x 10"	400
SVTS-1836	36" x 18"	29.5" x 10"	400
SVTS-1848	48" x 18"	41.5" x 10"	300
SVTS-1860	60" x 18"	53.5" x 10"	150
SVTS-1872	72" x 18"	65.5" x 10"	100
SVTS-1884	84" x 18"	38.75" x 10"*	600
SVTS-1896	96" x 18"	44.75" x 10"*	600
SVTS-2424	24" x 24"	17.5" x 16"	400
SVTS-3024	30" x 24"	23.5" x 16"	400
SVTS-3624	36" x 24"	29.5" x 16"	400
SVTS-4824	48" x 24"	41.5" x 16"	300
SVTS-6024	60" x 24"	53.5" x 16"	150
SVTS-7224	72" x 24"	65.5" x 16"	100
SVTS-8424	84" x 24"	38.75" x 16"*	600
SVTS-9624	96" x 24"	44.75" x 16"*	600
SVTS-3030	30" x 30"	23.5" x 22"	400
SVTS-3630	36" x 30"	29.5" x 22"	400
SVTS-4830	48" x 30"	41.5" x 22"	300
SVTS-6030	60" x 30"	53.5" x 22"	150
SVTS-7230	72" x 30"	65.5" x 22"	100
SVTS-8430	84" x 30"	38.75" x 22"*	600
SVTS-9630	96" x 30"	44.75" x 22"*	600
SVTS-3636	36" x 36"	29.5" x 28"	400
SVTS-4836	48" x 36"	41.5" x 28"	300
SVTS-6036	60" x 36"	53.5" x 28"	150
SVTS-7236	72" x 36"	65.5" x 28"	100
SVTS-9636	96" x 36"	44.75" x 28"*	600



FRONT VIEW



* Weight must be evenly distributed