

"SG" SNEEZE GUARD

Brushed Stainless Steel - 3/8" Thick Glass Panels

FEATURES:

- Brushed #4 Polish, Satin Finish
- 1" Radius Corners On Glass
- Independent Angular Adjustment
- Glass End Panel Is 1/4" Thick
- Glass Panels Are 3/8" Thick
- 1/4"-20 Threaded Insert In Post For Flush Surface Mounting

SPECIFICATIONS:

- 1" Diameter Stainless Steel Post
- Clear Tempered Glass With Polished Edges
- 1/4" Glass (Max Span 54")
- 3/8" Glass (Max Span 66")

CERTIFICATIONS:



SG101-48

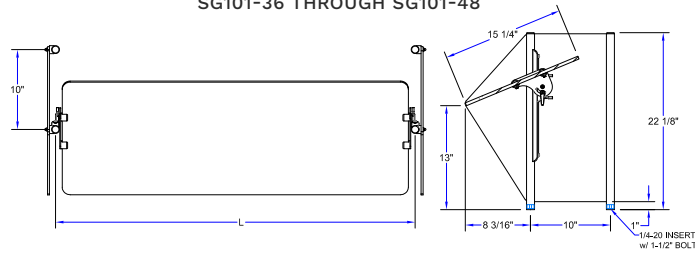
"SG" SNEEZE GUARD

MODEL	LENGTH (L)	POST CENTER TO CENTER	A	WEIGHT (LBS)
SG101-36	36"	33"	-	78
SG101-48	48"	45"	-	85
SG101-60	60"	57"	28-1/2"	115
SG101-72	72"	69"	34-1/2"	125
SG101-84	84"	81"	40-1/2"	130
SG101-96	96"	93"	46-1/2"	140
SG101-108	108"	105"	52-1/2"	155
SG101-120	120"	117"	58-1/2"	165
SG101-132	132"	129"	43"	190
SG101-144	144"	141"	47"	210

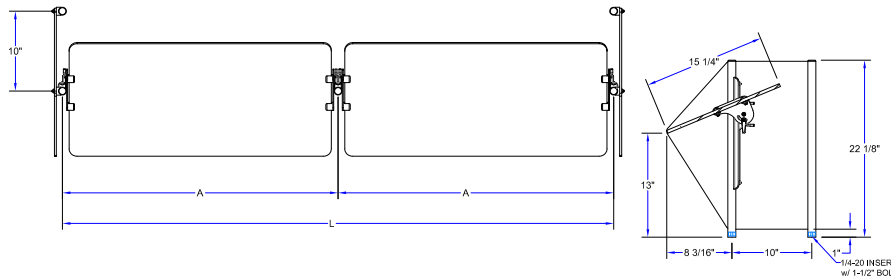
ALL DIMENSIONS ARE TYPICAL. TOLERANCE +/- .500". JOHN BOOS & CO. RESERVES THE RIGHT TO CHANGE SPECIFICATIONS WITHOUT NOTICE.

DETAILED SPECIFICATIONS

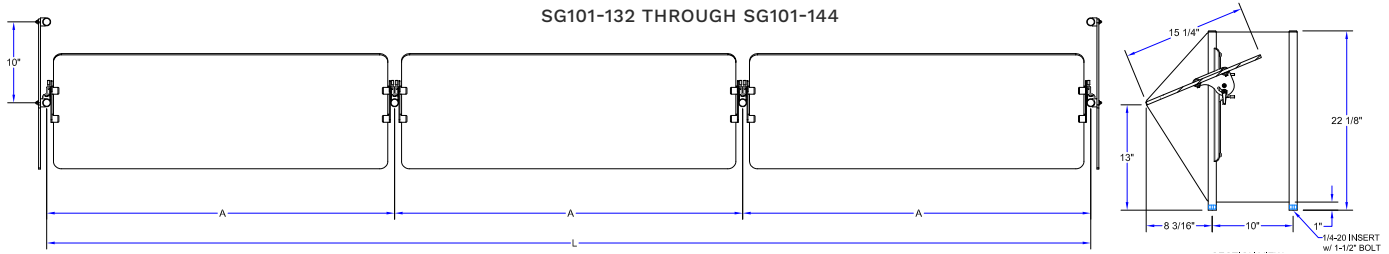
SG101-36 THROUGH SG101-48



SG101-60 THROUGH SG101-120



SG101-132 THROUGH SG101-144



"SG" SNEEZE GUARD

MODEL	LENGTH (L)	POST CENTER TO CENTER	A	WEIGHT (LBS)
SG101-36	36"	33"	-	78
SG101-48	48"	45"	-	85
SG101-60	60"	57"	28-1/2"	115
SG101-72	72"	69"	34-1/2"	125
SG101-84	84"	81"	40-1/2"	130
SG101-96	96"	93"	46-1/2"	140
SG101-108	108"	105"	52-1/2"	155
SG101-120	120"	117"	58-1/2"	165
SG101-132	132"	129"	43"	190
SG101-144	144"	141"	47"	210

ALL DIMENSIONS ARE TYPICAL. TOLERANCE +/- .500". JOHN BOOS & CO. RESERVES THE RIGHT TO CHANGE SPECIFICATIONS WITHOUT NOTICE.