



Profit from the Eagle Advantage®

Specification Sheet

Short Form Specifications

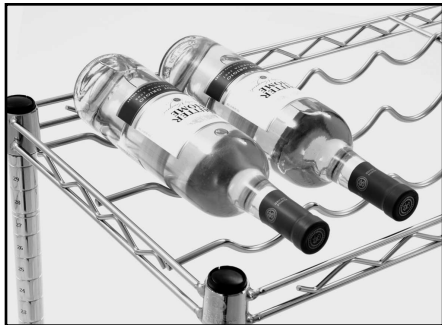
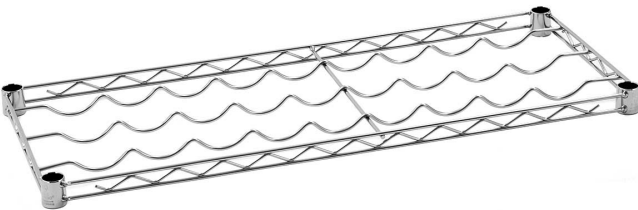
Eagle Cradle Wine Shelf, model _____. (Chrome plated or black) adjustable shelf to accommodate different size bottles. 9- to 12-bottle capacity per shelf. Bottles kept stationary by front and rear shelf trusses.

| | |
|--------------|-------|
| Item No.: | _____ |
| Project No.: | _____ |
| S.I.S. No.: | _____ |

Cradle Wine Shelves

MODELS:

- W1436C
- W1448C
- W1436BL
- W1448BL



wine bottles "cradled"

Design and Construction Features

- Each bottle is "cradled" by heavy gauge wire, preventing unsafe movement.
- Shelves are adjustable, therefore able to accommodate different sized stock supplies.
- Bottles are kept stationary by front and rear shelf trusses.
- 9 to 12 bottle capacity per shelf.
- Available in chrome-plated mild steel or black epoxy finish.

Options / Accessories

- Wall clamps
- Plastic shelf markers
- Wire wall mounts

EAGLE GROUP

100 Industrial Boulevard, Clayton, DE 19938-8903 USA
 Phone: 302-653-3000 • 800-441-8440 • Fax: 302-653-2065
www.eaglegrp.com
www.eaglegrpnews.com
www.eaglemhc.com

For custom configuration or fabrication needs, contact our SpecFAB® Division.
 Phone: 302-653-3000 • Fax: 302-653-2065 • e-mail: quotes@eaglegrp.com



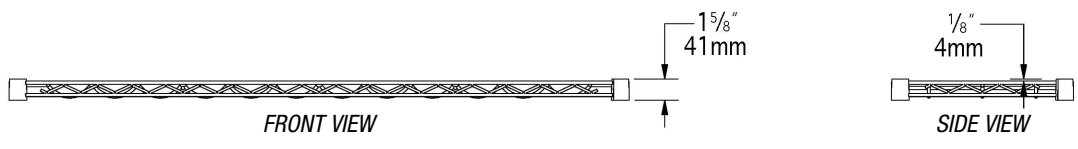
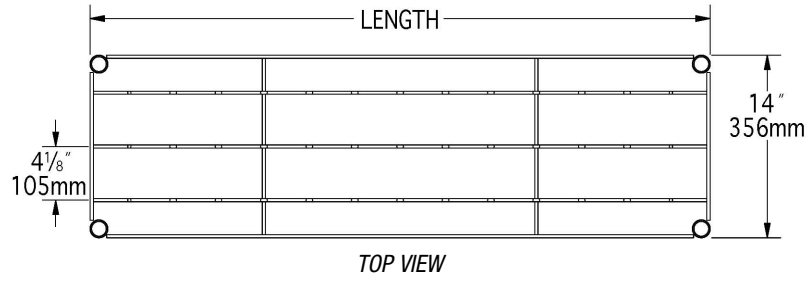
EG01.20 Rev. 06/23

Spec sheets available for viewing, printing or downloading from our online literature library at our websites



Item No.: _____
 Project No.: _____
 S.I.S. No.: _____

Cradle Wine Shelves

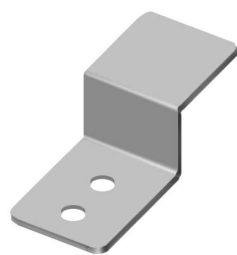


| chrome model # | black model # | width in. mm | length in. mm | weight lbs. kg | capacity (750ml bottles) |
|----------------|---------------|--------------|---------------|----------------|--------------------------|
| W1436C | W1436BL | 14" 356 | 36" 914 | 7 3.2 | 9 |
| W1448C | W1448BL | 14" 356 | 48" 1219 | 9 4.1 | 12 |

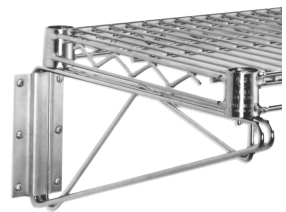
Optional Accessories for Cradle Wine Shelves



plastic shelf marker



wall clamp



wire wall mounts

Also available: bulk wine storage and display units. For further information, please consult our Price List.

EAGLE GROUP
 100 Industrial Boulevard, Clayton, DE 19938-8903 USA
 Phone: 302-653-3000 or 800-441-8440 • Fax: 302-653-2065
 www.eaglegrp.com • www.eaglegrpnews.com • www.eaglehmc.com

Printed in U.S.A.
 ©2023 by Eagle Group
 Rev. 06/23

Spec sheets available for viewing, printing or downloading from our online literature library at our websites

Although every attempt has been made to ensure the accuracy of the information provided, we cannot be held responsible for typographical or printing errors. Information and specifications are subject to change without notice. Please confirm at time of order.