

Steel finish



Icon finish

Modular electric deck oven 2 decks composition

serieS is the most advanced and customizable oven in the world, ideal for **perfect baking of pizza, bakery, pastry, and gastronomy**.

Customize serieS choosing dimensions, number, and type of baking chamber, **material** for baking surface (refractory deck, or embossed steel deck), door opening, Steel or Icon finish, and so much more. serieS meets all production needs thanks to specific and integrable baking chambers: **Multibake, Pastrybake e Steamake**. Power consumption reduced by 35% and baking speed increased by 20% are the features that make serieS the evolution of baking; the professional oven for those who want to extend their business with a single tool



OPERATION

- Heated by highly performing armoured heating elements
- Temperature management using P.I.D. permit the automatic energy regulation to the quantity of the baked product Adaptive-Power® Technology
- Separated temperature management of ceiling and floor Dual-Temp® Technology
- Separated power management of ceiling and floor Dual-Power® Technology
- Automatic cleaning program for carbonization
- Maximum temperature reached 842°F
- Continuous temperatures monitoring in baking chamber by 2 thermocouples
- Vapour ducting using manual butterfly valve

CONSTRUCTION

- Structure made in folded stainless steel
- Side panels in painted sheet metal
- Channel hood
- Steam duct in stainless steel plate
- Stainless steel door, panoramic glass element, door handle in stainless steel
- Aluminated steel top and side structure
- Refractory brick baking surface
- Double LED light
- Rock wool heat insulation

ACCESSORIES

- Leavening prover on wheels height 23 1/2", 31 1/2"
- Stand with wheels height 15 3/4", 23 1/2", 31 1/2", 37 1/2", 41 1/2"
- Spacer element height 11 13/16"
- Refractory brick or buckle plate surface
- Additional tray holder guides for compartment and stand
- Max power optimizer (Fource® Technology)
- Door opening from bottom to top
- Lateral tool-holder for compartment
- Oversized hood, frontless hood
- Remote-Master® Technology for remote management and control

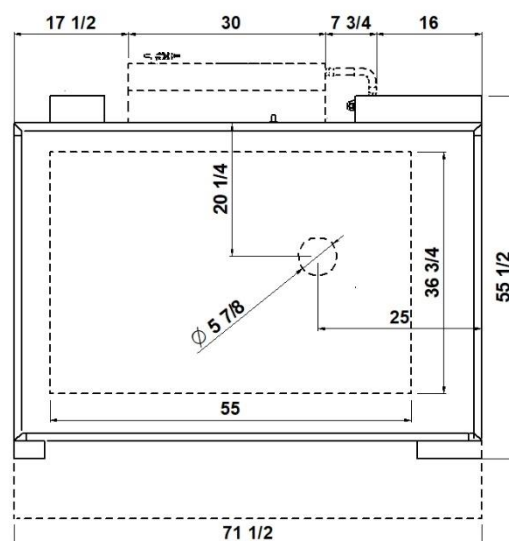
INTERNAL BAKING DIMENSIONS

Internal height	6 1/4"
Internal depth	36 3/4"
Internal width	55"
Baking surface	14ft ²

STANDARD EQUIPMENT

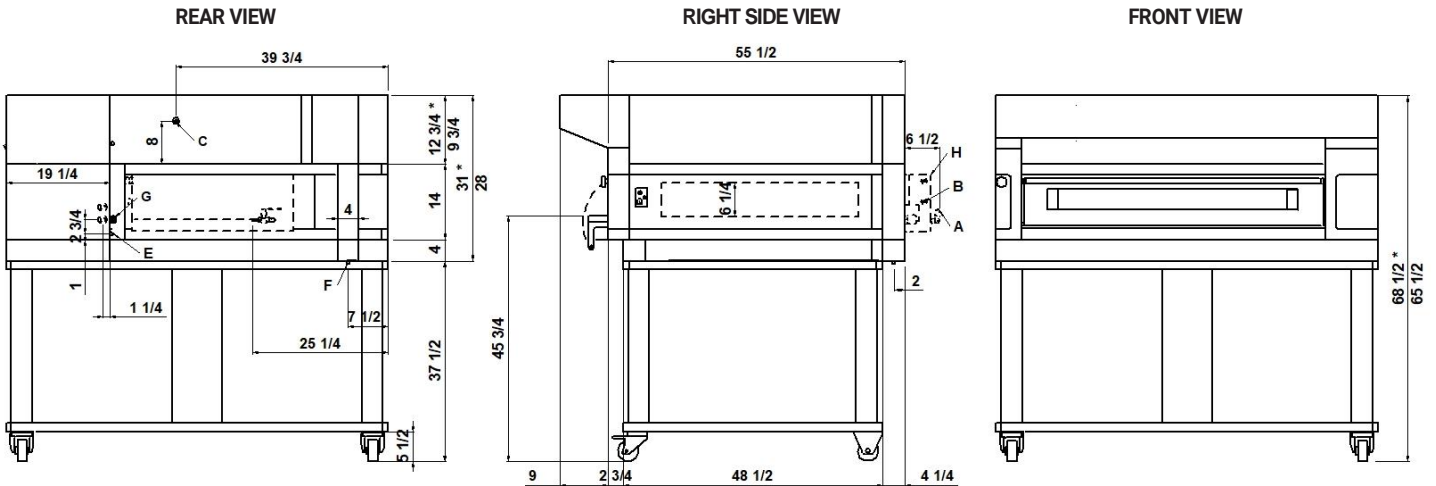
- Color multilanguage display TFT 5"
- 100 customized programs with baking steps
- Eco-Standby BY™ Technology for break
- Power-Booster™ Technology for workload peaks
- Half-Load™ Technology for partial load
- Front and rear power balance Delta-Power™ Technology
- Customized Hotkey with recurring control
- Self-diagnosis with error message display
- Independent double baking Timer and Multitimer
- Weekly Timer with the possibility to program two lightings and two power off every day
- Independent security device of maximum temperature
- USB input and wi-fi module for sw update

TOP VIEW



1 baking chamber height 6 1/4"

(assembled with stand height 37 1/2")



NOTE: The dimensions indicated in the views are in inches. *Dimensions refer to the oversized hood.

A Ø 5/16" steamer water outlet	B 3/4" male steamer water inlet	C Ø 5/8" hood condensate exhaust	
E M6 equipotential screws	F Ø 1/2" condensate exhaust	G fairleads	H Steamer 3480W (see data sheet)

DIMENSIONS

External height	18" (460mm)
External depth	55 1/2" (1408mm)
External width	71 1/2" (1815mm)
Weight	838lb (380kg)

SHIPPING INFORMATION

Packed in wooden crate	
Height	34" (860mm)
Depth	73" (1843mm)
Width	82" (2025mm)
Weight	948lb (430kg)

FEEDING AND POWER

Standard feeding	
A.C. V208 3ph	
Frequency	60Hz
Max power	16kW/DECK
*Average power cons	5,5kWh
Ampère max	45A/DECK (V208 3ph)
Connecting cable for each chamber	6AWG/DECK (V208 3ph)
Power supply (optional proofer)	
A.C. V(208/240) 1ph 60Hz	
Max power	1,8kW
*Average power cons	0,9kWh
Conn. Cable 14 AWG – Ampère	7,5A

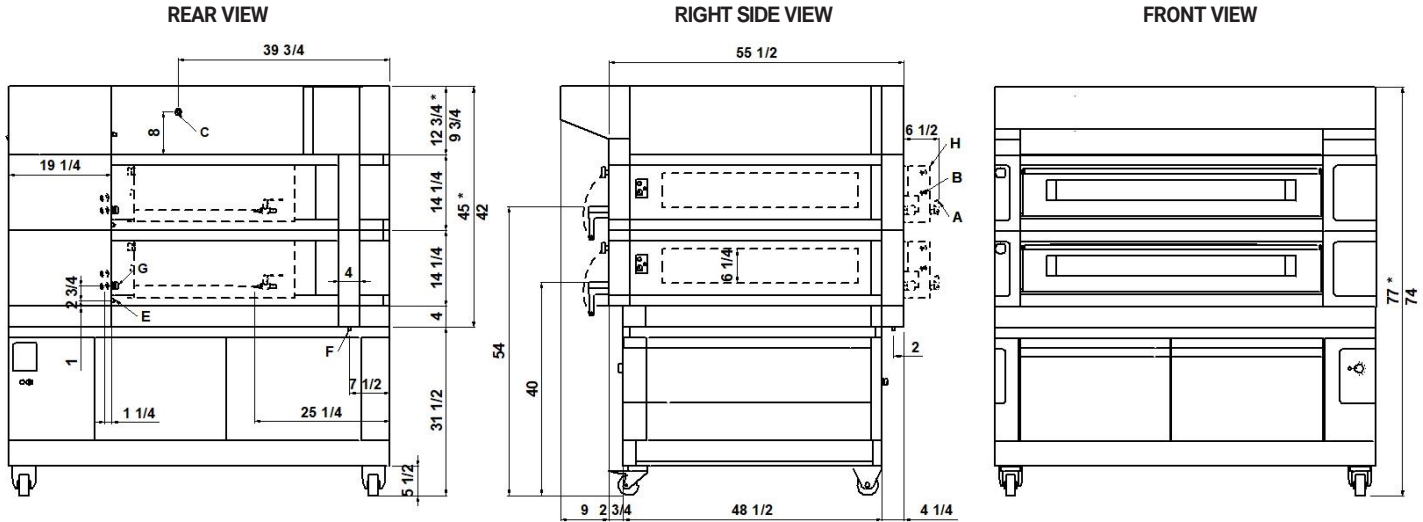
TOTAL BAKING CAPACITY

Tray 26"x18" (or 600x400 mm)	4	When combined with proofer or stand:
Pizza diameter 14"	8	Max height
Pizza diameter 18"	6	Max weight

* This value is subject to variation according to the way in which the equipment is used

NOTE: MORETTI FORNI S.P.A. reserves the right to modify the characteristics of the products illustrated in this publication without prior notice

2 baking chambers height 6 1/4"
(assembled with proofer height 31 1/2")



NOTE: The dimensions indicated in the views are in inches. *Dimensions refer to the oversized hood.

A Ø 5/16" steamer water outlet	B 3/4" male steamer water inlet	C Ø 5/8" hood condensate exhaust	
E M6 equipotential screws	F Ø 1/2" condensate exhaust	G fairleads	H Steamer 3480W (see data sheet)

DIMENSIONS

External height	32 1/4" (820mm)
External depth	55 1/2" (1408mm)
External width	71 1/2" (1815mm)
Weight	1210lb (550kg)

SHIPPING INFORMATION

Packed in wooden crate	
Height	48" (1220mm)
Depth	73" (1843mm)
Width	82" (2025mm)
Weight	1300lb (590kg)

FEEDING AND POWER

Standard feeding	
A.C. V208 3ph	
Frequency	60Hz
Max power	16kW/DECK
*Average power cons	5,5kWh
Ampère max	45A/DECK (V208 3ph)
Connecting cable for each chamber	6AWG/DECK (V208 3ph)
Power supply (optional proofer)	
A.C. V(208/240) 1ph 60Hz	
Max power	1,8kW
*Average power cons	0,9kWh
Conn. Cable 14 AWG – Ampère	7,5A

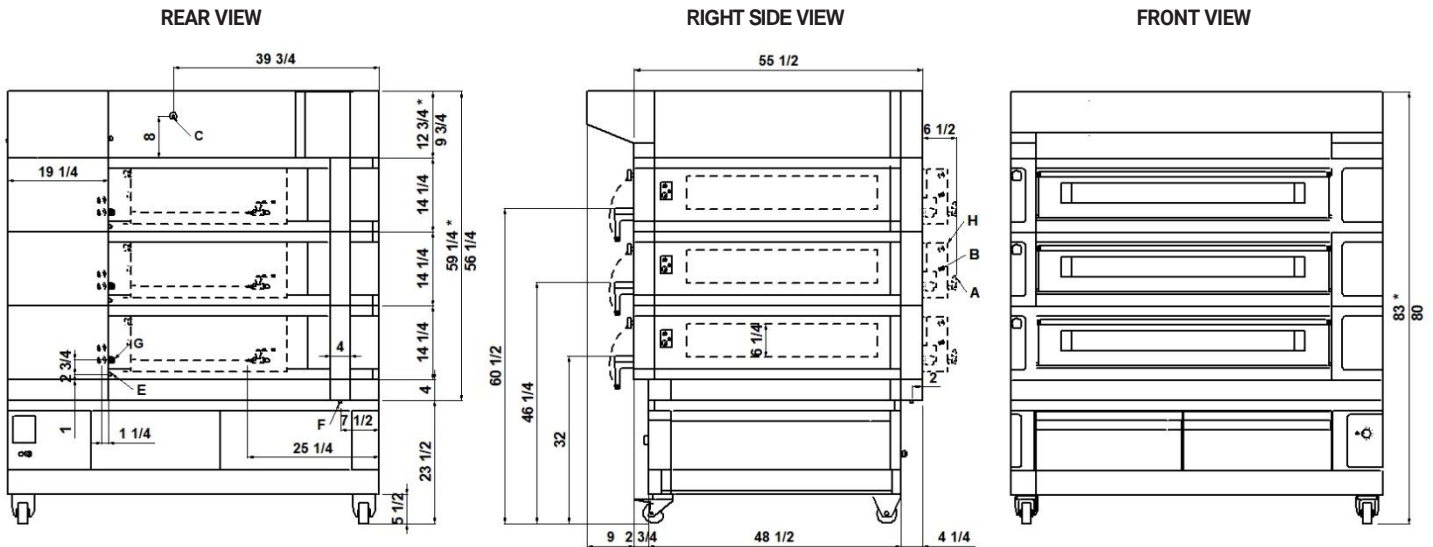
TOTAL BAKING CAPACITY

Tray 26"x18" (or 600x400 mm)	8	When combined with proofer or stand:	
Pizza diameter 14"	16	Max height	85" (2150mm)
Pizza diameter 18"	12	Max weight	1672lb (758kg)

* This value is subject to variation according to the way in which the equipment is used

NOTE: MORETTI FORNI S.P.A. reserves the right to modify the characteristics of the products illustrated in this publication without prior notice

3 baking chambers height 6 1/4"
(assembled with proofer height 23 1/2")



NOTE: The dimensions indicated in the views are in inches. *Dimensions refer to the oversized hood.

A Ø 5/16" steamer water outlet	B 3/4" male steamer water inlet	C Ø 5/8" hood condensate exhaust	
E M6 equipotential screws	F Ø 1/2" condensate exhaust	G fairleads	H Steamer 3480W (see data sheet)

DIMENSIONS

External height	46 1/2" (1180mm)
External depth	55 1/2" (1408mm)
External width	71 1/2" (1815mm)
Weight	1620lb (735kg)

SHIPPING INFORMATION

Packed in wooden crate	
Height	62" (1580mm)
Depth	73" (1843mm)
Width	82" (2025mm)
Weight	1775lb (805kg)

FEEDING AND POWER

Standard feeding	
A.C. V208 3ph	
Frequency	60Hz
Max power	16kW/DECK
*Average power cons	5,5kWh
Ampère max	45A/DECK (V208 3ph)
Connecting cable for each chamber	6AWG/DECK (V208 3ph)
Power supply (optional proofer)	
A.C. V(208/240) 1ph 60Hz	
Max power	1,8kW
*Average power cons	0,9kWh
Conn. Cable 14 AWG – Ampère	7,5A

TOTAL BAKING CAPACITY

Tray 26"x18" (or 600x400 mm)	12	When combined with proofer or stand:	
Pizza diameter 14"	24	Max height	91" (2310mm)
Pizza diameter 18"	18	Max weight	2028lb (920kg)

* This value is subject to variation according to the way in which the equipment is used
NOTE: MORETTI FORNI S.P.A. reserves the right to modify the characteristics of the products illustrated in this publication without prior notice

S140
TECHNICAL DATA

SHIPPING INFORMATION H6 1/4"		S140E_1_16	S140E_2_16	S140E_3_16
Packed in wooden crate	Height	34" (860mm)	48"(1220mm)	62"(1580mm)
	Icon height	38" (960mm)	52"(1320mm)	66"(1680mm)
	Weight	948lb (430kg)	1301lb (590kg)	1773lb (804kg)
When combined with proofer or stand	Max. height	73"(1860mm)	82"(2070mm)	88"(2230mm)
	Max. icon height	76"(1940mm)	85"(2150mm)	91"(2280mm)
	Max. weight	1102lb (500)kg	1576lb (715kg)	2028lb (920kg)

FEEDING AND POWER (EACH DECK NEEDS TO BE CONNECTED INDEPENDENTLY AND THE LOAD SHOWN BELOW ARE PER DECK)	A.C. V208 3ph 60Hz	Multibake	Max power	kW	16
			*Medium cons/hour	kWh	5,5
			Ampère Max	A/DECK	45
	Connecting cable	AWG/DECK	6		
	A.C. V208 3ph 60Hz	Steambake	Max power	kW	19,2
			*Medium cons/hour	kWh	5,8
			Ampère Max	A/DECK	53
	Connecting cable	AWG/DECK	6		
	A.C. V208 3ph 60Hz	Pastrybake	Max power	kW	11,2
			*Medium cons/hour	kWh	3,4
			Ampère Max	A/DECK	31
	Connecting cable	AWG/DECK	6		
	A.C. V(208/240) 1ph 60Hz	Proofer	Max power	kW	1,8
			*Medium cons/hour	kWh	0,9
			Ampère Max	A/DECK	7,5
	Connecting cable	AWG/DECK	14		

MAX TEMPERATURE	Multibake	°C/°F	842°F	450°C
	Steambake		662°F	350°C
	Pastrybake		518°F	270°C

* This value is subject to variation according to the way in which the equipment is used
NOTE: MORETTI FORNI S.P.A. reserves the right to modify the characteristics of the products illustrated in this publication without prior notice