



SIGNATURE SERIES BARTENDER PREP SINK
18" Length

MODEL NUMBERS - TSCE18PSTC, TSCE18PSTC-RC

NSF
C US
ASME A112.19.3/
CSA B45.4
NSF/ANSI 2



TSCE18PSTC



TSCE18PSTC-RC

JOB
AREA
ITEM NO.
MODEL NO.

Models
TSCE Series
TSCE18PSTC
TSCE18PSTC-RC

KEY PRODUCT FEATURES AND BENEFITS

- Heavy gauge fabricated sink bowl has one-piece seamless top with radius corners for easy cleaning
- Optional swing spout faucet with foot operated control is available
- Underside of sink(s) is sound deadened
- Integrated glass rinser to quickly rinse bartender shaker tins (not included)
- Optional integrated recessed cubby provides useful storage space – heavy gauge wire rod securely keeps bottles in place
- Sectioned – multi-depth tool caddy accommodates various length bar tools (not included) and includes a factory installed dedicated faucet
- Stainless steel legs install without tools and have “rust free” thermoplastic feet

Quick Features:

- Integrated glass rinser quickly rinses bartender shaker tins and glasses
- Heavy gauge fabricated sink bowl features a seamless one piece top design for easy cleaning
- Underside of the bartender prep sink is sound deadened for quiet operation

California Prop 65 Notice:



WARNING: The materials used in this product may contain chemicals known to the State of California to cause cancer and birth defects or other reproductive harm, For more information go to www.P65Warnings.ca.gov.

Form No. Z2384
Rev 11.28.22



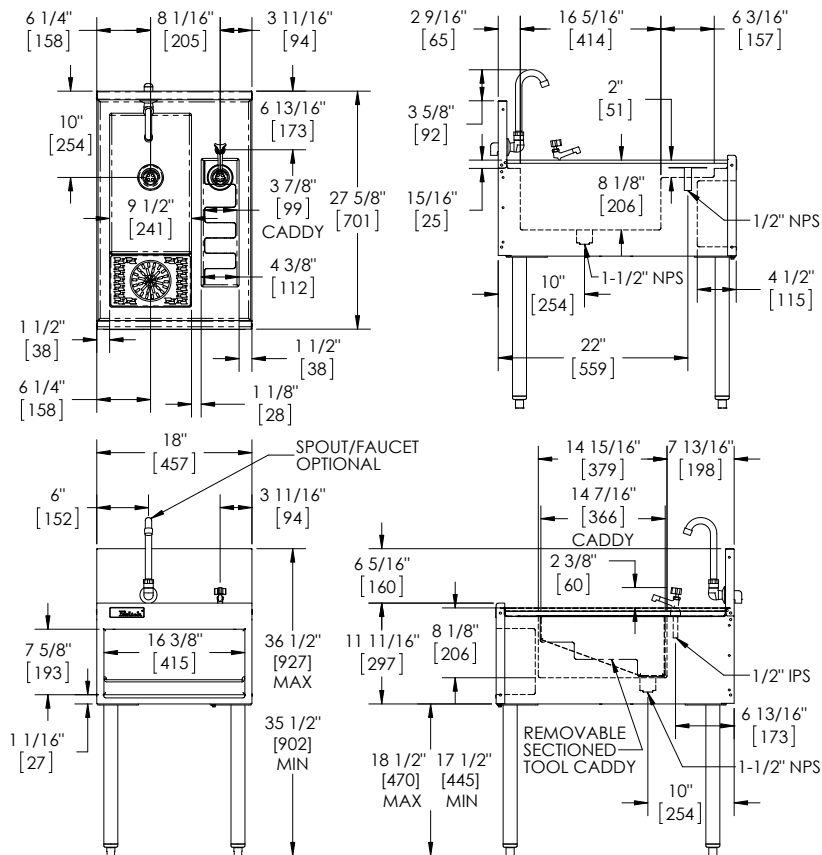
SIGNATURE SERIES BARTENDER PREP SINK

18" Length

MODEL NUMBERS - TSCE18PSTC, TSCE18PSTC-RC

MODEL NOS.		TSCE18PSTC	TSCE18PSTC-RC
DIMENSIONS: EXTERIOR (mm)	LENGTH IN. (mm)	18" (457)	18" (457)
	SHIP WT. lbs (kg)	60 (22.6)	60 (22.6)
CONSTRUCTION		All stainless steel construction. TSCE Series: Stainless steel 6" high (4" high optional) with 1" return at top, mechanically fastened and sealed. TSD Series: Not Applicable	
SINK - WET WASTE		Stainless steel sink bowl with 1/4" radius corners. Sound deadened to absorb sound. 9-1/2" x 16-5/16" x 7-3/16" deep. Furnished with 1-1/2" NPS stainless steel drain socket. Accommodates "optional" wet waste pan.	
GLASS RINSER		NSF listed stainless steel 4-3/8" diameter glass rack and valve assembly. 1/2" NPS thread for valve connection for 3/8" flexible hose. 9-1/2" x 6-3/16" x 15/16" deep pan has "water fall" drainage into wet waste sink, eliminates need for additional drain. Includes removable glass rack. <i>Check local plumbing codes. Install in-line water regulator set to 15-20 psi (not included). Install in-line shut-off valve (not included) and turn off nightly.</i>	
TOOL CADDY DISHER WELL (Model TSCD18PSTC-RC)		Stainless steel sink bowl with 1/4" radius corners. Sound deadened to absorb sound. 4-3/8" c 14-5/16" x 7-3/16" deep. Furnished with 1-1/2" NPS stainless steel drain socket. Includes removable, sectioned, multi-depth tool caddy disher well to accommodate various length bar tools (not included). Includes factory installed NSF-listed, low-lead, fine stream "dipper" faucet.	
RECESSED CUBBY STORAGE		N/A	Stainless steel recessed cubby storage in front face of module, 10-3/8" x 7-5/8" x 4-1/2" deep. Heavy gauge stainless steel rod retainer, keeps small bottle secure.
LEGS		1-5/8" tubular, stainless steel with 1" adjustable thermoplastic foot.	
ACCESSORIES		NSF-listed, low lead compliant water faucets, spouts and foot operated pedals.	

TSCE18PSTC-RC



Form No. Z2384
Rev 11.28.22