



The Signature of Quality®

**FEDERAL INDUSTRIES**

A Standex Company

215 Federal Avenue Belleville  
Wisconsin 53508-9201

**Phone:** 800-356-4206

**Fax:** 608-424-3234

**Email:** Geninfo@Federalind.com

**Website:** Federalind.com

Project Name: \_\_\_\_\_

AIA #

Item #: \_\_\_\_\_

Model #: \_\_\_\_\_ Qty: \_\_\_\_\_

SIS #

Approval: \_\_\_\_\_

## Italian Glass Series - Heated Display Case 34"

Designed for customers looking for rich, up-scale Italian styling for maximum visual appeal that will drive product sales.



Model ITH4834-B18  
Shown with Options

MODEL	DIMENSIONS <small>(Includes End Panels)</small>
<input type="checkbox"/> ITH3634-B18	36 x 30.75 x 52 (in) 914 x 762 x 1321 (mm)
<input type="checkbox"/> ITH4834-B18	48 x 30.75 x 52 (in) 1219 x 762 x 1321 (mm)
<input type="checkbox"/> ITH6034-B18	60 x 30.75 x 52 (in) 1524 x 762 x 1321 (mm)

### STANDARD FEATURES

#### Model Features

- All tempered glass construction
- Tilt-out front glass for easy cleaning
- Removable sliding glass rear doors
- Stainless steel interior
- Powder coated steel base assembly with a choice of standard laminates
- Adjustable leg levelers
- Cord & plug

#### Shelving

- Three tiers stainless steel shelves are adjustable up and down and can be tilted in two positions ( 0°/ 5° angle).

#### Lighting

- 3500K LED top light and shelf lights
- DLC certified, IP66 rated

#### Agency Approvals

- UL, C-UL, and UL Sanitation Listed to NSF-4

### OPTIONAL ACCESSORIES

- |  |  |
|--|--|
| <input type="checkbox"/> Special base laminates                              | <input type="checkbox"/> 6"/152mm Legs with or without skirt                             |
| <input type="checkbox"/> Glass shelving                                      | <input type="checkbox"/> Rear package shelf  |
| <input type="checkbox"/> 21" Stainless steel shelving (all shelves)          | <input type="checkbox"/> Joining kit for continuous line-ups - Available w/ divider only |
| <input type="checkbox"/> Reflective rear doors                               |  |
| <input type="checkbox"/> Reflective end glass                                |  |
| <input type="checkbox"/> Humidity package                                    |  |
| <input type="checkbox"/> 2 ½" (63.5 mm) or 4"/102mm casters recessed casters |  |



**WARRANTY\***  
One year Parts and Labor  
2nd thru 5th year part only  
service compressor  
(U.S.A. and Canada)

**Note: Information is subject to change at any time. Visit [www.federalind.com](http://www.federalind.com) For the most current specs.**

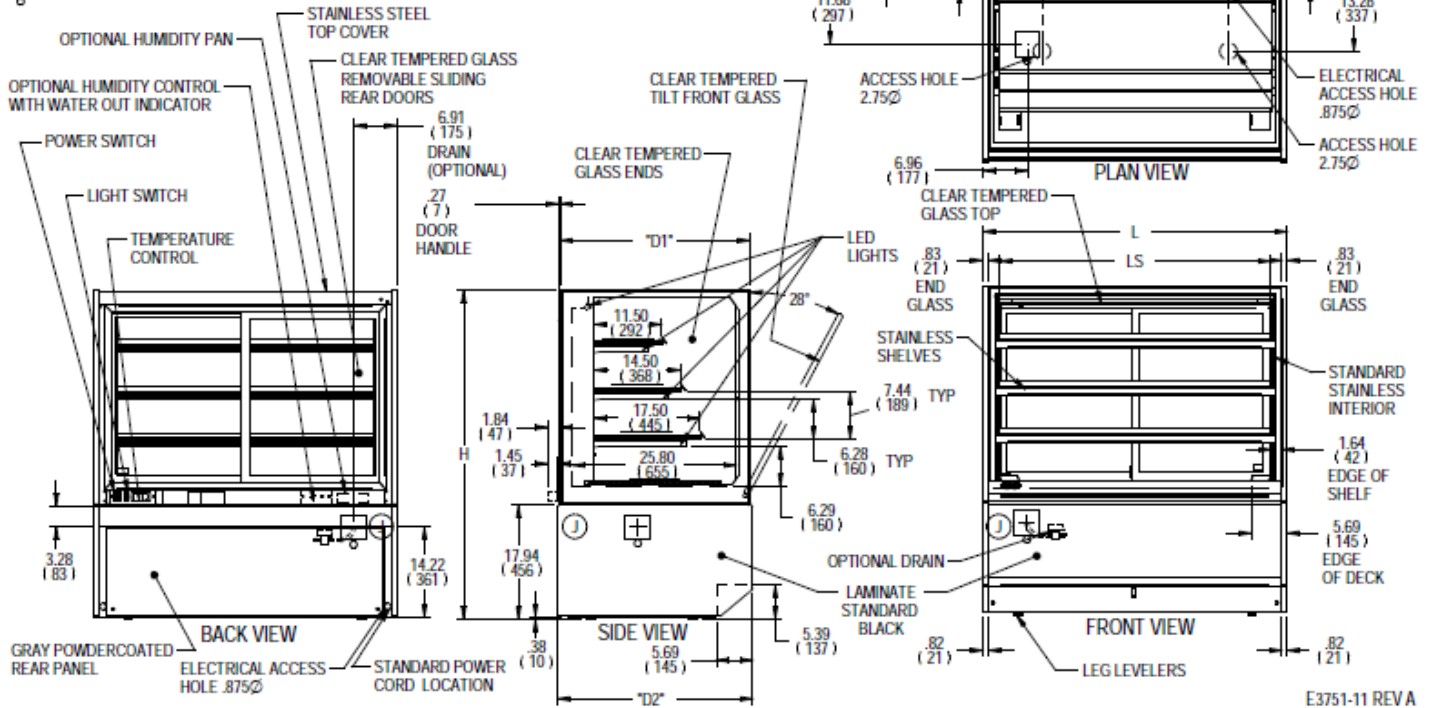
AIA #	Italian Glass Series - Heated Display Case 34"
SIS #	Product Specifications

Zone	Intended product to be displayed	Avg prod temp °F / °C
All	Packaged and unpackaged heated products	160°F/(71.1°C)

DIMENSION: xx"/(mm)

**SYMBOL KEY:**

- J ELECTRICAL JUNCTION BOX (SUPPLIED W/8 LEADS OR POWER CORD)
- HUMIDITY PAN DRAIN LOCATION (HUMIDITY PACKAGE ONLY)



E3751-11 REV A

MODEL	DIMENSIONS				# OF TIERS	SHELVING				DISPLAY AREA SQ IN	INTERIOR VOLUME CU FT	STANDARD CONNECTION CORD & PLUG			SHIP WEIGHT
	L	D1	D2	H		DT	DT	DB	LS			2-WIRE + GROUND		NEMA CORD & PLUG	
	in	in	in	in		in	in	in	in			208-240/60/1			
	mm	mm	mm	mm		mm	mm	mm	mm			AMPS	MAX FUSE SIZE	KILO	
ITH3634-B18	36	30	30.75	52	2	11.5	14.5	17.5	30.73	1630	11.4	9 @ 208	15	NEMA 6-15P	725
	914	762	781	1321		292	368	445	781			12 @ 240			329
ITH4834-B18	48	30	30.75	52	2	11.5	14.5	17.5	42.73	2240	15.4	9 @ 208	15	NEMA 6-15P	775
	1219	762	781	1321		292	368	445	1085			12 @ 240			351
ITH6034-B18	60	30	30.75	52	2	11.5	14.5	17.5	54.73	2850	19	9 @ 208	15	NEMA 6-15P	900
	1524	762	781	1321		292	368	445	1390			12 @ 240			408

• Due to continuing engineering improvements, specifications are subject to change without notice



ANSI/NSF 4



**FEDERAL INDUSTRIES**  
 A Standex Company  
 215 Federal Avenue Belleville, Wisconsin 53508-9201

**Phone:** 800-356-4206  
**Fax:** 608-424-3234  
**Email:** Geninfo@Federalind.com  
**Website:** Federalind.com