

"EDSC" DISH STORAGE CABINETS

Economy - 18GA, 15" or 18" Wide

FEATURES:

- Dish Cabinet w/Open Base - 18" Depth, Buffet Cabinet w/Open Base - 15" Depth
- Flat Top With 1-1/2" Stallion Edge On Front And 90 Degree Bend Down On Side Edge For Table Line Up
- Top Is Sound Deadened
- Stainless Steel Legs With Adjustable Bullet Feet
- Fixed Mid Shelf
- Shipped Standard Welded Set Up

SPECIFICATIONS:

- Top: 18GA Type 300 Stainless Steel, Cabinet Tops TIG Welded, Exposed Welds Are Polished To Match Adjacent Surface, #4 Polished, Satin Finish
- Body: 18GA Type 300 Stainless Steel
- Legs: Stainless Steel w/Adjustable Bullet Feet

CERTIFICATIONS:



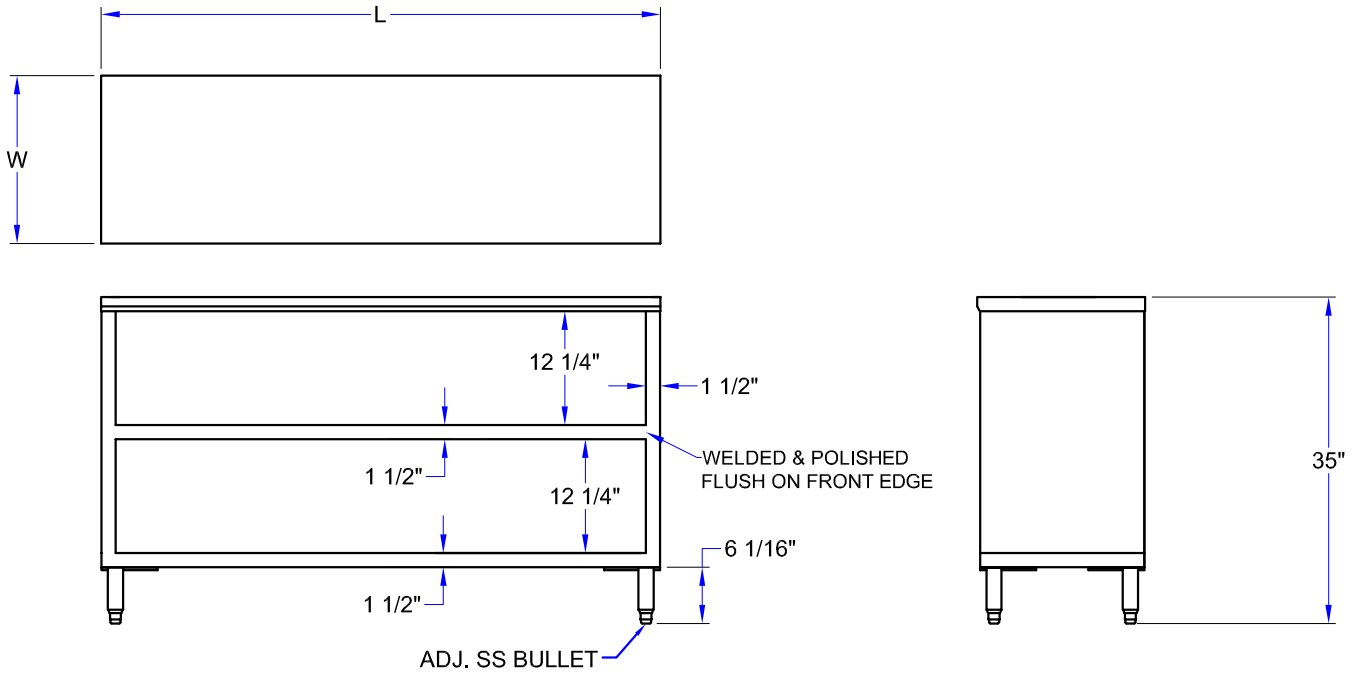
EDSC8-1548

"EDSC" ECONOMY DISH STORAGE CABINETS

MODEL	SIZE (L X W X H)	WEIGHT (LBS)
EDSC8-1548	48"x15"x35"	127
EDSC8-1560	60"x15"x35"	194
EDSC8-1572	72"x15"x35"	226
EDSC8-1848	48"x18"x35"	187
EDSC8-1860	60"x18"x35"	246
EDSC8-1872	72"x18"x35"	286

ALL DIMENSIONS ARE TYPICAL. TOLERANCE +/- .500". JOHN BOOS & CO. RESERVES THE RIGHT TO CHANGE SPECIFICATIONS WITHOUT NOTICE.

DETAILED SPECIFICATIONS



"EDSC" ECONOMY DISH STORAGE CABINETS

MODEL	SIZE (L X W X H)	WEIGHT (LBS)
EDSC8-1548	48"x15"x35"	127
EDSC8-1560	60"x15"x35"	194
EDSC8-1572	72"x15"x35"	226
EDSC8-1848	48"x18"x35"	187
EDSC8-1860	60"x18"x35"	246
EDSC8-1872	72"x18"x35"	286

ALL DIMENSIONS ARE TYPICAL. TOLERANCE +/- .500". JOHN BOOS & CO. RESERVES THE RIGHT TO CHANGE SPECIFICATIONS WITHOUT NOTICE.