

Direct Steam Kettle

2/3 Jacketed
Deep Drawn Construction
Tilting, Pedestal Mounted
Made in USA

Model TWP

STANDARD FEATURES



Model TWP-40

with optional automatic water filling meter

Legion equipment is built to comply with applicable standards for manufacturers. Approval agencies may include ASME, NSF, UL, ETL, AGA, CSA, CGA, and others. Legion reserves the right of design improvement or modification as warranted.

- ◆ Kettle System
 - ◇ Seamless deep-drawn 304 kettle liner
 - ◇ 304L seamless deep-drawn stainless kettle jacket
- ◆ 304 stainless, reinforced gear box
- ◆ Self-locking worm tilt gear mechanism
- ◆ 304 stainless, 2" tubular support frame
- ◆ 304 stainless pedestal base
- ◆ 30 psi operating pressure

Models and Capacities

TWP-20	20 gal.	76 l.
TWP-30	30 gal.	114 l.
TWP-40	40 gal.	151 l.
TWP-50	50 gal.	189 l.
TWP-60	60 gal.	227 l.
TWP-80	80 gal.	303 l.
TWP-100	100 gal.	379 l.

Select draw-off valve: 2" 3"

With: compression ball type fitting

See price list for other draw-off options.

Revision 113

Optional Features and Accessories

See price list for supplemental information regarding options

Faucet Options:

- Single or double fill faucet with bracket & 12" or 18" swing nozzle
 - 48" flexible spray hose assembly (vinyl or stainless) for use with dual or single fill faucet
 - Faucet bracket
 - Automatic water filling meter
- (Call for information regarding additional faucet options)

Prison/Security Options:

- Fastener (nut for draw-off)
- Draw-off nut driver tool
- Lockable lid
- Reinforced bar rim

Other Options:

- Higher operating pressure
- Air eliminator valve
- Pressure reducing valve

Other Options:

- Connection plumbing parts kit
- Mixer/Agitator, 2 speed

Covers:

- Lift-off cover
- 1 piece actuator-assisted cover, 20 - 30 gallon

Accessories:

- Draw-off drain hose
- Measuring strip
- Perforated disk strainer 1/4" or 1/8" holes
- Pour lip pan holder assembly
- Kettle care kit
- Single basket, 20 - 40 gal.
- Tri-basket insert
- Nylon bag insert with spreader ring



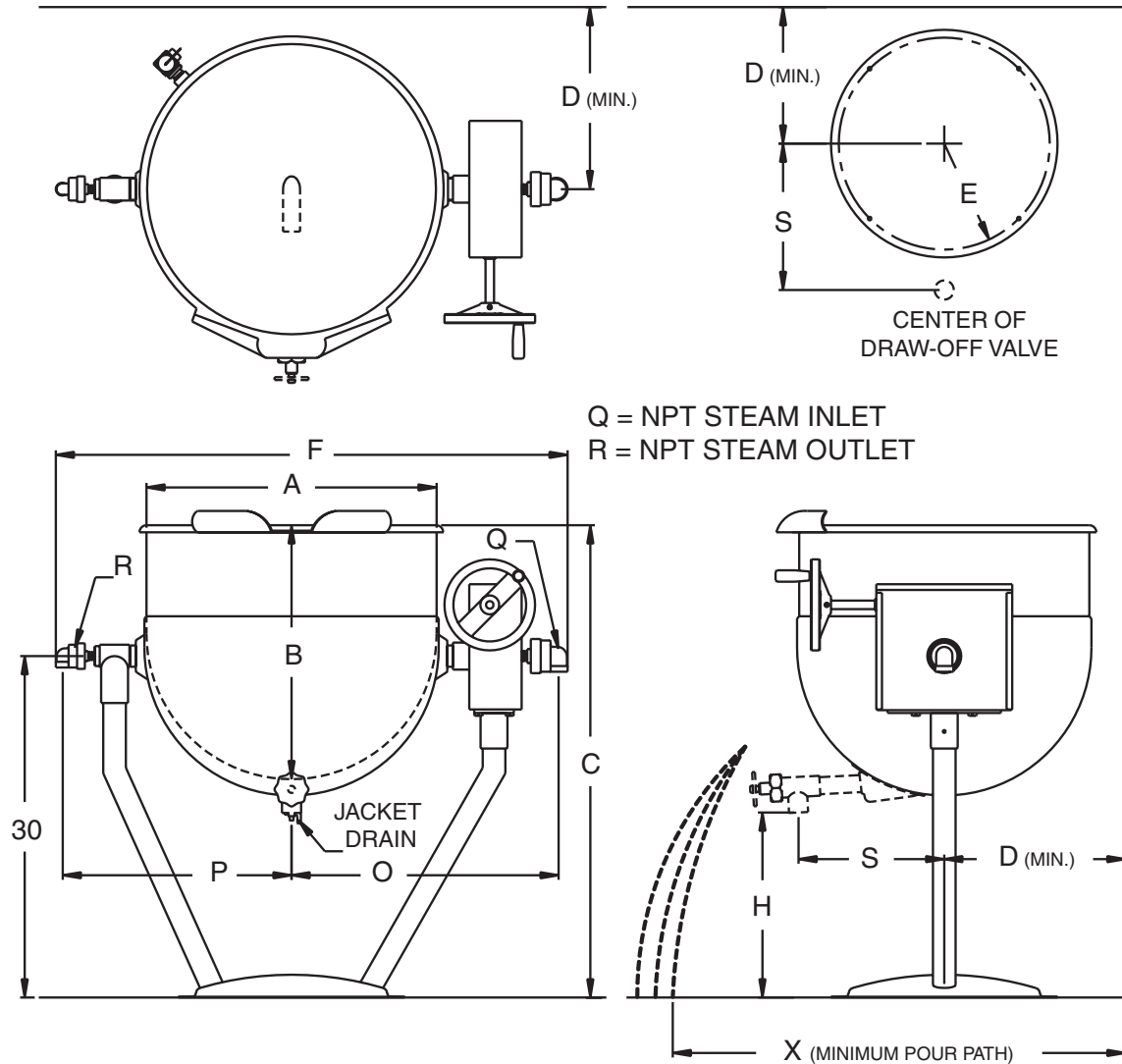
LEGION Legion Industries, Inc. P.O. Office Box 728 Waynesboro, GA 30830 (800) 887-1988
(706) 554-4411 Fax: (706) 554-2035 www.legionindustries.com sales@legionindustries.com

Model TWP

2/3 Jacketed
Deep Drawn Construction
Tilting, Pedestal Mounted
Made in USA

Direct Steam Kettle

DRAWING REPRESENTS MODEL TWP-40 WITH OPTIONAL 1 1/2" DRAW-OFF



MODEL TWP DIMENSIONS													
Gal.	A	B	C	D	E	F	H*	O	P	Q	R	S	X
20	22.0	16.0	39.0	13.9	7.9	40.8	20.0	21.4	18.0	.75	.50	13.0	21.9
30	23.0	20.3	41.3	15.9	7.9	42.5	18.0	22.3	18.9	.75	.50	13.0	26.0
40	25.5	22.3	41.5	17.9	9.4	45.3	16.3	23.6	20.3	.75	.50	13.0	28.4
50	29.5	21.8	38.3	21.0	9.4	49.6	13.5	25.9	22.5	.75	.50	14.0	28.3
60	29.5	25.0	41.5	21.0	9.4	49.6	13.5	25.9	22.5	.75	.50	14.0	31.5
80	32.5	27.6	43.4	22.0	9.4	53.3	12.8	27.3	24.3	.75	.75	14.0	34.4
100	39.0	25.9	41.3	23.5	11.8	58.8	12.3	30.0	27.0	.75	.75	17.8	33.8

*"H" dimension varies with draw-off size selection.

Revised 113

