

VACUUM CLIPPER MACHINES

Project _____
 Item _____
 Quantity _____
 FCSI Section 11400 _____
 Approved _____
 Date _____

Models

- CVW4100



Standard Features

- Single Station, automatic, hand activated System
- Able to handle random sizes and weights
- Vertical mounted Clipper with automatic Clip feeding mechanism, Safety shut-off Valve and Air Pressure Gauge
- Vacuum Pump and Controls Mounted in Stainless Steel Cabinet
- System complete with: Air Filter, Regulator and Pneumatic Lubricator
- Easy removable Waste Container
- Adjustable Clip crimping Control and Clipping Cycle
- One continuous Operation: draws Vacuum, gathers Casing Neck, clips and cuts Tailing
- Cabinet with adjustable Table Top, hinged Front and Side Doors
- Accepted for use in U.S.D.A. Inspected Facilities

Short Form Specifications

Shall be Cleveland Model CVW4100, Vacuum packaging system, Stainless Steel Cabinet, housing pneumatic Controls and On/Off Switch, vertical mounted Clipper with automatic Clip feeding, safety shut-off and Air pressure Gauge. Air Filter, Air regulator and pneumatic Lubricators. Cabinet with adjustable Table Top, and hinged front and side Doors.

Options & Accessories

- Casters
- Clips
- Labels

Models

- CVESZ4135



Standard Features

- Single station, hand activated vacuum packaging system
- Able to handle random sizes and weights
- Open base stainless steel cabinet
- Horizontal mounted Clipper
- Vacuum pump assembly complete with air filter, regulator and pneumatic lubricator
- Easily removable waste container
- Tabletop mounted Goose-neck pipe with vacuum nozzle and gauge
- Accepted for use in U.S.D.A. Inspected Facilities

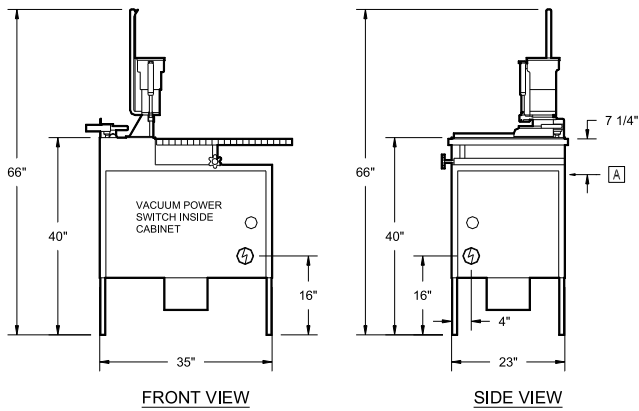
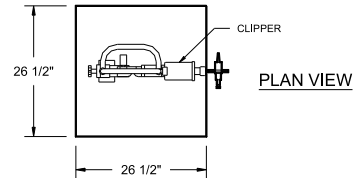
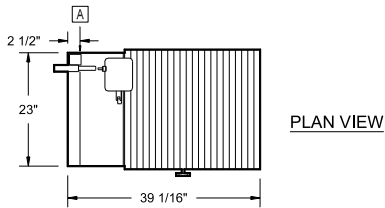
Short Form Specifications

Shall be Cleveland Model CVEZ4135, Vacuum packaging system, Stainless steel open stand with vacuum pump, horizontal mounted clipper, goose-neck assembly with vacuum gauge and hand activated nozzle.

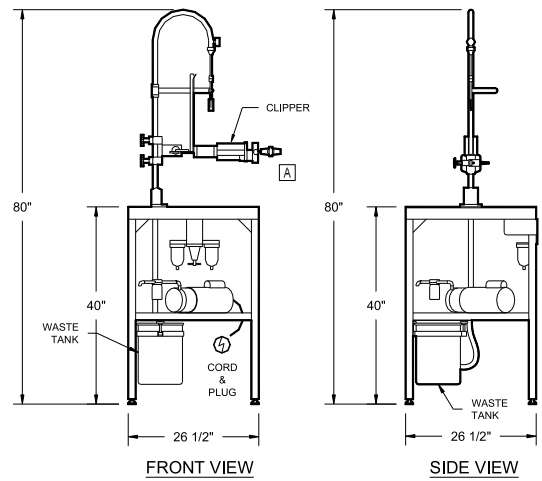
Options & Accessories

- Casters
- Clips
- Labels

MINIMUM CLEARANCE	
FRONT	36"
SIDE	12"
REAR	12"



CVW



CV-E-8065

UTILITIES

MODEL	AIR	ELECTRICAL	SHIP WEIGHT
	[A]	⚡	APPROXIMATE
CVW	15 CFM, 90 to 110 PSI	120V/1PH – 10 amps cord and plug	305 lbs

MODEL	AIR	ELECTRICAL	SHIP WEIGHT
	[A]	⚡	
CVESZ4135	15 CFM, 90 to 110 PSI	120V/1PH – 10 amps cord and plug	300 lbs

Cleveland Range reserves right of design improvement or modification, as warranted.

(NOT TO SCALE)

Cook Chill Systems