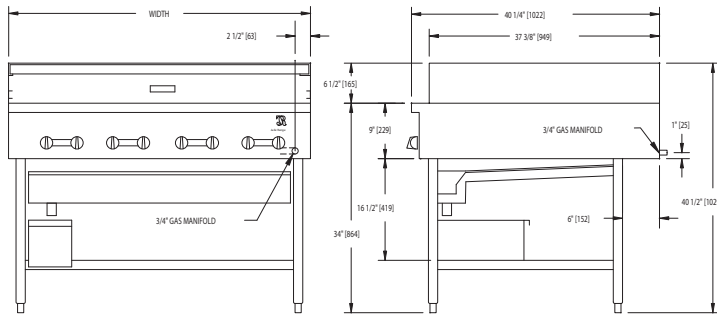




# CHICKEN BROILER HIGH PRODUCTION



JCBH-48



MODEL	BURNERS	WIDTH	DEPTH	HEIGHT	BTUS
JCBH-24	4	24"	40-1/4"	40-1/2"	100,000
JCBH-30	5	30"	40-1/4"	40-1/2"	125,000
JCBH-36	6	36"	40-1/4"	40-1/2"	150,000
JCBH-42	7	42"	40-1/4"	40-1/2"	175,000
JCBH-48	8	48"	40-1/4"	40-1/2"	200,000
JCBH-60*	10	60"	40-1/4"	40-1/2"	250,000
JCBH-72*	12	72"	40-1/4"	40-1/2"	300,000

\* 1" regulator recommended

MODEL NO.	DESCRIPTION
<input type="checkbox"/> JCBH-24	24" HIGH PRODUCTION CHICKEN BROILER
<input type="checkbox"/> JCBH-30	30" HIGH PRODUCTION CHICKEN BROILER
<input type="checkbox"/> JCBH-36	36" HIGH PRODUCTION CHICKEN BROILER
<input type="checkbox"/> JCBH-42	42" HIGH PRODUCTION CHICKEN BROILER
<input type="checkbox"/> JCBH-48	48" HIGH PRODUCTION CHICKEN BROILER
<input type="checkbox"/> JCBH-60	60" HIGH PRODUCTION CHICKEN BROILER
<input type="checkbox"/> JCBH-72	72" HIGH PRODUCTION CHICKEN BROILER

### STANDARD FEATURES

- Extra deep
- 14 gauge stainless steel all welded body construction
- Precision individual control of burners
- One burner for every 6" of broiler width
- Stainless steel superstructure (removable for cleaning) offers 4 levels of broiling and gives an additional 4" of cooking space at the rear
- High production burner output is 25,000 BTU/hr. each—actual broiling area available from 6.2 sq. ft. to 18.6 sq. ft.
- Specially designed flame control grates
- Extra large self-draining gutter, grease drawer and shelf
- 12 gauge all welded firebox construction
- 3/4" gas regulator
- Stainless steel front and sides, plate shelf
- Stainless steel legs and bottom shelf

### AVAILABLE OPTIONS

- Stainless steel drip deflector and grease drawer

### ACCESSORIES

- 6" casters, front two locking (3" diameter wheel)
- 36" flex hose with quick disconnect and restraining device
- 48" flex hose with quick disconnect and restraining device

**NOTE: SPECIFY TYPE OF GAS WHEN ORDERING.**

### UTILITY INFORMATION:

- 3/4" connection (see drawing for location)
- Required operating pressure:
  - Natural Gas 5" W.C. minimum
  - Propane Gas 10" W.C. minimum
  - 14" W.C. maximum

**Note:** This unit must be connected with the gas appliance regulator supplied.

**SPECIFY TYPE OF GAS WHEN ORDERING.**

**SPECIFY ALTITUDE WHEN ABOVE 2,000 FT.**



WWW.JADERANGE.COM

JADE RANGE, LLC., A MIDDLEBY COMPANY • 2650 Orbiter Street • Brea, CA 92821 • PHONE: 800-884-5233 FAX: 714-961-2550  
Note: In line with their policy to continually improve products, Jade reserves the right to change materials and specifications without notice. PRINTED IN USA