

- **FR6** 74"L x 43-1/4"D x 84-3/4"H
- **FR8** 93"L x 43-1/4"D x 84-3/4"H

### Included

- 8" X 13" Buckets
- Digital fahrenheit thermometer
- One year parts & labor warranty
- Rail system for shims
- Shelving display converts from level to angled
- Top light (LED 4000K)



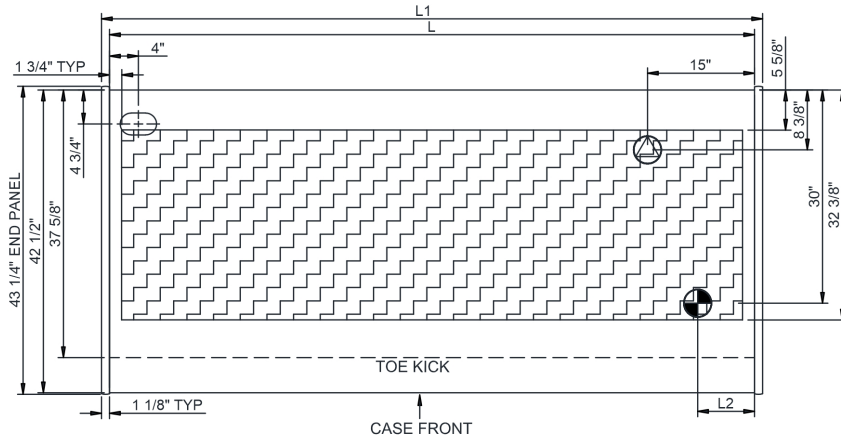
FR6

Specify	Standard Features	Additional Options
<b>EXTERIOR COLOR</b>	• Powder coated Silversan Black	• Powder coated (stock/non-stock colors)
<b>INTERIOR COLOR</b>	• Powder coated Silversan Black	• Stainless steel
<b>LOWER FRONT PANEL COLOR</b>	• Powder coated Silversan Black	• Powder coated (stock/non-stock colors)
<b>REAR EXTERIOR COLOR</b>	• Powder coated Silversan Black	
<b>BASE SUPPORT</b>	• Rail system for shims	
<b>END PANELS</b>	• Full w/stainless steel mirror interior	• Cutaway w/ glass
<b>FLORAL DISPLAY</b>	<sup>1</sup> • 8" X 13" Buckets	
<b>SHELVING</b>	• (2) Levels of convertible shelving	
<b>TOP LIGHT</b>	• Top light (LED 4000K)	
<b>ELECTRICAL CONNECTION</b>	• Electrical leads	
<b>REFRIGERATION</b>	• Remote DX refrigeration	• Remote DX w/thermostat, solenoid & TXV
<b>SENSOR</b>	• None	• CPC discharge air sensor (remote)
<b>MISCELLANEOUS</b>		• Second year parts & labor warranty

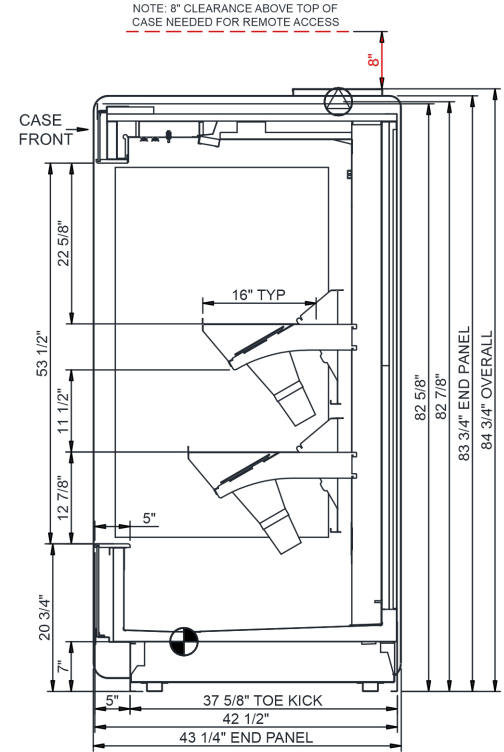
Std Notes: 1 - FR6 = (12), FR8 = (16)

<b>Intended Environment:</b> Type I - Designed to operate in ambient conditions of 75°F with 55% relative humidity unless noted otherwise in system information below.		
<b>Zone</b>	<b>Intended Product To Be Displayed</b>	<b>Warmest Avg Prod Temp ° F</b>
1	Floral products	40

### PLAN VIEW



### SIDE VIEW



NOTE: ALL DIMENSIONS APPROXIMATE

- ELECTRICAL JUNCTION BOX (SUPPLIED WITH 6" LEADS OR POWER CORD).
- LOCATION OF DRAIN TUBE FOR REMOTE REF. ONLY (SUPPLIED WITH 3/4" OR 1 1/2" PVC TUBE).

- REFRIGERATION LINE CONNECTION.
- REMOTE FLOOR SINK & UTILITIES ACCESS AREA.

- SELF-CONTAINED CASE SERVICE ACCESS AREA.
- DRY CASE SERVICE ACCESS AREA.

Model Technical Specifications																
Model	L"	L1"	L2"	System Circuit Volts		Phs	Freq	Amps ***	Watts	Wires	NEMA Plug	SST	Conv. Rack BTUH	Para. Rack BTUH	Est Wt	
FR6	71.75	74.00	8.00	Remote (DX)	Circuit #1	110-120	1	60	2.14	136	2+G	Leads Multiple	26.00	10368	9600	N/A
FR8	90.75	93.00	8.00	Remote (DX)	Circuit #1	110-120	1	60	2.96	123	2+G	Leads Single	26.00	14170	13120	N/A

\*\*\* Does not include electric defrost on freezer models.

Regulatory Approvals:	
All Models	ETL Listed to UL 471 ETL Listed to CAN/CSA 22.2 No. 120 ETL Sanitation to NSF/ANSI 7



In Accordance with  
**AHRI Std 1200**

**DOE 2017**  
Energy Efficiency  
Compliant

### Important Notes:

- 1) ELECTRICAL NOTE: If GFCI is required, a GFCI breaker MUST be used in lieu of a GFCI receptacle.
- 2) Top electrical access.
- 3) Keep unit at least 15' from exterior doors, 10' from overhead HVAC vents, 5' from exterior windows.
- 4) Units must be shimmed during installation to ensure the unit is level and plumb.
- 5) Performance issues (product temperatures, water on floor, etc) caused by adverse conditions are not covered by warranty.

**⚠ WARNING:** This product can expose you to chemicals, including Urethane (Ethyl Carbamate), which are known to the State of California to cause cancer and birth defects or other reproductive harm. For more information go to [www.P65Warnings.ca.gov](http://www.P65Warnings.ca.gov).