



**John
BOOS**
Since 1887

ITEM #: _____ QTY: _____
 MODEL #: _____
 PROJECT NAME: _____

073118

3601 S. Banker St. Effingham, IL 62401 • P.O. BOX 609 • Ph: (888) 431-2667 • Fax: (800) 433-2667

"CDT-I" CLEAN ISLAND DISHTABLES PRO-BOWL



FEATURES:

- TYPE 300 STAINLESS STEEL WITH # 4 POLISH, SATIN FINISH
- FULL LENGTH **10" HIGH BOXED BACKSPASH**, WITH 2" RETURN TO WALL AT 45 DEGREE AND 1/2" TURNED DOWN REAR LIP
- ALL OUTSIDE CORNERS OF ASSEMBLY ARE BULLNOSED TO PROVIDE SAFE, CLEAN, AND POLISHED EDGE
- STANDARD 1-5/8" DIAMETER LEGS



CONSTRUCTION:

- TOP: STAINLESS STEEL TOPS ARE TIG WELDED, EXPOSED WELDS ARE POLISHED TO MATCH ADJACENT SURFACE.

MATERIAL:

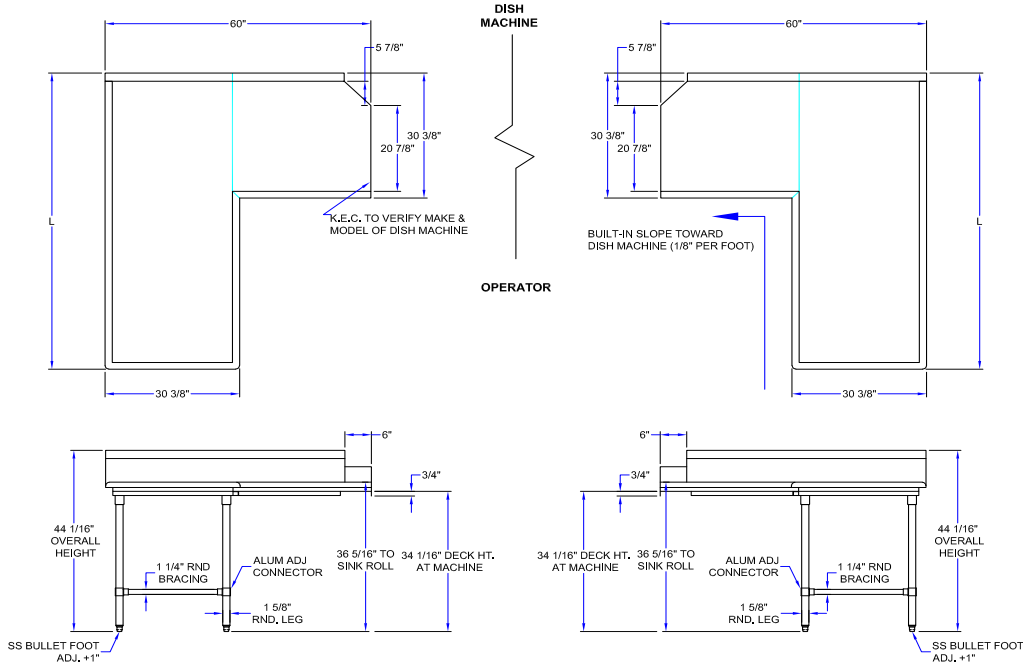
- TOP: STAINLESS STEEL
- FEET: 1" ADJUSTABLE STAINLESS STEEL BULLET FEET

14 GAUGE 304 16 GA. STAINLESS STEEL LEGS		16 GAUGE 304 16 GA. STAINLESS STEEL LEGS		16 GAUGE GALVANIZED LEGS	
PREMIUM	QTY	STANDARD	QTY	VALUE	QTY
CDT4-I6048SBK-L OR R		CDT6-I6048SBK-L OR R		CDT6-I6048GBK-L OR R	
CDT4-I6060SBK-L OR R		CDT6-I6060SBK-L OR R		CDT6-I6060GBK-L OR R	
CDT4-I6072SBK-L OR R		CDT6-I6072SBK-L OR R		CDT6-I6072GBK-L OR R	
CDT4-I6084SBK-L OR R		CDT6-I6084SBK-L OR R		CDT6-I6084GBK-L OR R	
CDT4-I6096SBK-L OR R		CDT6-I6096SBK-L OR R		CDT6-I6096GBK-L OR R	
CDT4-I60108SBK-L OR R		CDT6-I60108SBK-L OR R		CDT6-I60108GBK-L OR R	
CDT4-I60120SBK-L OR R		CDT6-I60120SBK-L OR R		CDT6-I60120GBK-L OR R	
CDT4-I60144SBK-L OR R		CDT6-I60144SBK-L OR R		CDT6-I60144GBK-L OR R	

OPTIONAL ACCESSORIES

DESCRIPTION	MODEL #	QTY
OVER SHELF		
UNDER SHELF		

DETAILED SPECIFICATIONS



- UNITS 7 FT. AND LARGER ARE FURNISHED WITH SIX LEGS.

LENGTH	14 GAUGE 304 16 GA. STAINLESS STEEL LEGS		16 GAUGE 304 16 GA. STAINLESS STEEL LEGS		16 GAUGE GALVANIZED LEGS	
	PREMIUM	WT. (LBS)	STANDARD	WT. (LBS)	VALUE	WT. (LBS)
48"	CDT4-I6048SBK-L OR R	195	CDT6-I6048SBK-L OR R	185	CDT6-I6048GBK-L OR R	185
60"	CDT4-I6060SBK-L OR R	215	CDT6-I6060SBK-L OR R	205	CDT6-I6060GBK-L OR R	205
72"	CDT4-I6072SBK-L OR R	235	CDT6-I6072SBK-L OR R	220	CDT6-I6072GBK-L OR R	220
84"	CDT4-I6084SBK-L OR R	250	CDT6-I6084SBK-L OR R	240	CDT6-I6084GBK-L OR R	240
96"	CDT4-I6096SBK-L OR R	270	CDT6-I6096SBK-L OR R	260	CDT6-I6096GBK-L OR R	260
108"	CDT4-I60108SBK-L OR R	290	CDT6-I60108SBK-L OR R	275	CDT6-I60108GBK-L OR R	275
120"	CDT4-I60120SBK-L OR R	305	CDT6-I60120SBK-L OR R	295	CDT6-I60120GBK-L OR R	295
144"	CDT4-I60144SBK-L OR R	345	CDT6-I60144SBK-L OR R	335	CDT6-I60144GBK-L OR R	335

MODEL # STRUCTURE

60 = TOTAL WIDTH OF DISHTABLE
 I = ISLAND DISHTABLE
 6 = 16GA WORK SURFACE
 CDT = CLEANED DISHTABLE

120 = LENGTH
 SB = STAINLESS LEGS & BRACING
 K = K.D. W/ ADJUSTABLE BRACING
 L OR R = LEFT OR RIGHT DISHTABLE

CDT6-I60120SBK-L

SOME UNITS SHIP UNASSEMBLED FOR REDUCED SHIPPING COST. ALL DIMENSIONS ARE TYPICAL. TOLERANCE +/- .500"

John Boos & Co. is constantly engaged in a program of improving products and therefore reserves the right to change specifications without prior notice.



3601 S. Banker St. • Effingham, IL 62401 • PO BOX 609 • quotes@johnboos.com

020119



www.johnboos.com

313