

JOB NAME:

QUANTITY:

ITEM NO.:

SPEC: 29033 REV. A

PRODUCT NAME:

**DrainKing WASTE VALVE  
ROUGH CHROME**

\_\_\_\_\_ SPECIAL CONFIGURATION  
(CHECK BASE MODEL AND OPTIONS)

MODEL:

29033 w/ FLAT STRAINER & OVERFLOW BODY

OPTIONS OR MODIFICATIONS:

OTHER \_\_\_\_\_

FEATURES:

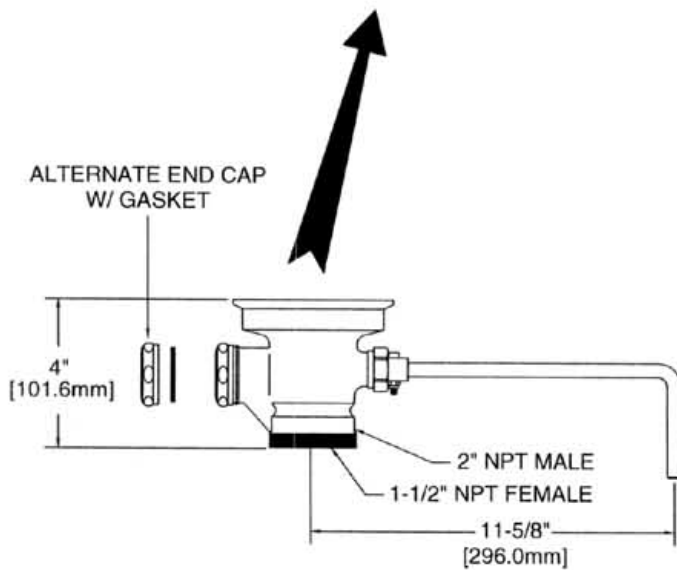
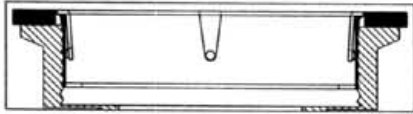
- \* DUAL TEFLON SEALS
- \* STAINLESS STEEL BALL
- \* CAST RED BRASS BODY, CHROME PLATED
- \* EXTRA STURDY STAINLESS STEEL CLAMPING RING
- \* "CLEAR THROUGH " OPENING - NO NEED TO DISASSEMBLE IF SNAKING IS REQUIRED
- \* INDUSTRY STANDARD "SEALING" ANGLE - FITS FLUSH TO STANDARD STAINLESS STEEL SINKS
- \* STAINLESS STEEL FLAT STRAINER
- \* 1/4 TURN FULLY OPENS AND CLOSES VALVE
- \* END CAP W/ GASKET (INSTALLED)
- \* SUPPLIED WITH:  
ALTERNATE SLIP JOINT NUT & WASHER

DRAIN RATE:

- \* 12 GPM

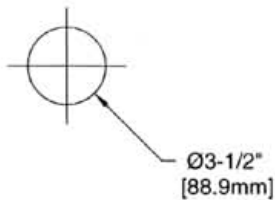
SHIPPING WEIGHT

- \* 5.5 LBS



ROUGH-IN:

DRAIN:



 ANSI/A112.18.1M