

Cuisine Series Heavy Duty Griddle Top Range

Project _____
 Item _____
 Quantity _____
 CSI Section 11400
 Approved _____
 Date _____

Models

- C48-1R
- C48-1S
- C48-1-1R
- C48-1-1S
- C48-1C
- C48-1M
- C48-1-1C
- C48-1-1M



Model C48-1R
 Range with 48" Griddle,
 Valve or Thermostat
 Controlled

Standard Features

- 48" Griddle top with 1" (25mm) thick steel plate.
- Hi-lo valve control (-1)
- Griddle control, with embedded thermostat sensor bulb (-1-1)
- Low to 450°F (232°C) (-1-1)
- Stainless front and sides
- Stainless steel front rail
- Stainless steel burner box
- 1 1/4" NPT front gas manifold
- Can be connected individually or in a battery
- 7" (178mm) high stainless steel stub back
- 6" (152mm) stainless steel adj. legs
- Porcelain oven interior
- R model - 4 rack positions
- C model - 3 rack positions
- R model - 1 chrome plated rack
- C model - 3 chrome plated racks
- Fully insulated oven interior
- Safety oven pilot
- Oven thermostat control: 150°-500°F (66°-260°C) (R/C)
- Range base convection oven (C) c/w NEMA 5-15P cord & plug, 1/3 hp motor, 120V 60Hz, 0.6A
- Modular unit (M) can be mounted on Polar Cuisine refrigerated base

Options & Accessories

- Grooved griddle - (full or 1/2)
- Stainless steel oven interior in lieu of porcelain oven interior - NC
- Single or double deck high shelf or back riser
- Full-height stand for modular units with legs or casters
- Stainless steel intermediate shelf for cabinet base
- Stainless steel door(s) for cabinet base units
- Stainless steel back
- Continuous plate rail, 48-72" for battery installations
- Gas shut-off valves: 3/4", 1", 1 1/4" NPT (Specify)
- Gas regulator: 3/4", 1", 1 1/4" NPT (Specify)
- Gas flex hose w/ quick disconnect: 3/4", 1", 1 1/4" (Specify)
- Rear gas connection: 3/4" NPT
- Set of (4) flanged feet (for fastening unit to the floor)
- Set of (4) 5" polyurethane non-marking swivel casters w/front brakes
- Set of (4) 6" swivel casters, w/front brakes
- Extra oven rack
- Extension for 1/9 pans

Specifications

Garland Cuisine 48" (1219mm) wide Heavy Duty Range Series. Model _____ with total BTU/h rating of _____ when used with natural/propane gas. Stainless steel front and sides. 6" (152mm) legs with adjustable feet.

Ovens - One piece oven door. Stainless steel oven interior with a heavy-duty, "keep-cool" door handle. Standard oven comes with a thermostat with a temperature range from 150° (low) to 500°F (66°-260°C).

Griddle Tops - 1" (25mm) thick steel plate griddle with 3" (76mm) wide grease trough. Burners rated 30,000 BTU/h each. One burner per 12" (305mm) section.

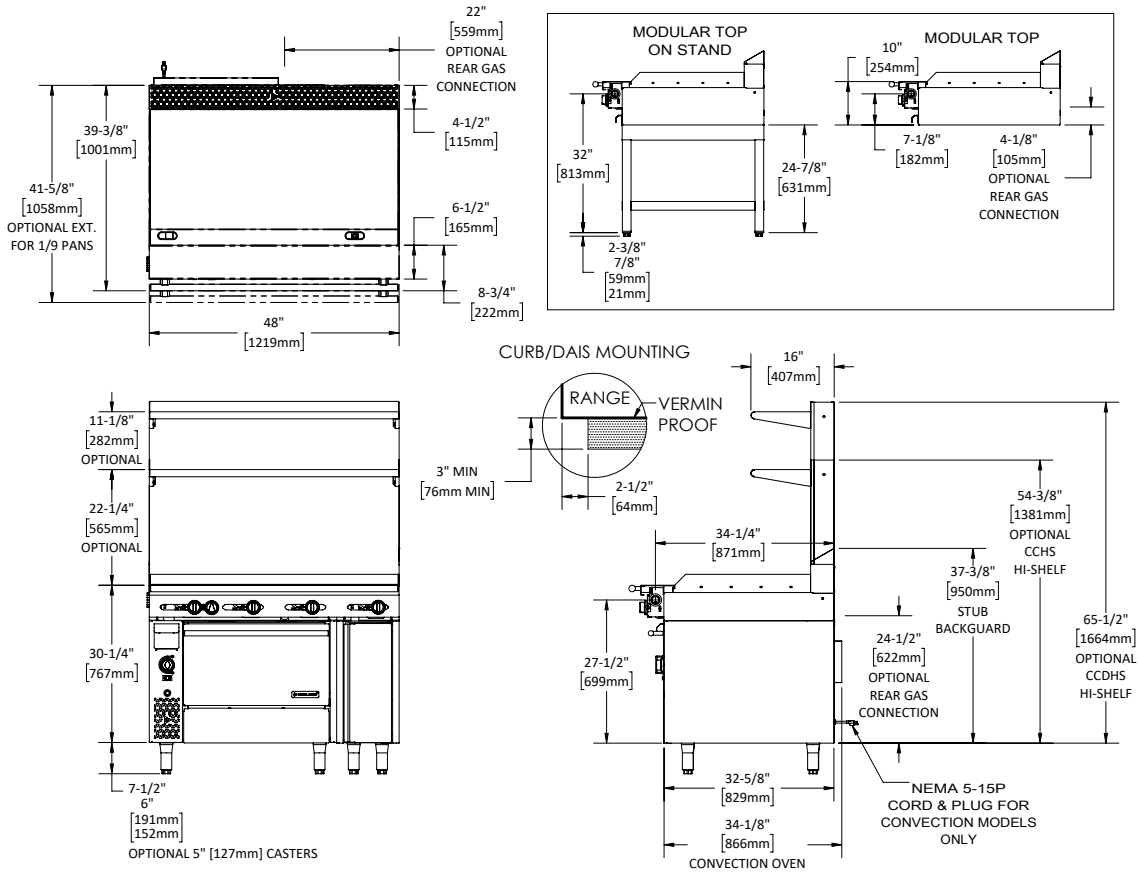
NOTE: Range-based convection oven models can be located in the middle of a battery, banked back-to-back with other equipment, and can be positioned against a wall.

NOTE: Ranges supplied with casters must be installed with an approved restraining device.



Cuisine Series Heavy Duty Griddle Top Range

Cuisine Series Heavy Duty Griddle Top Range



Model #	Description	Total BTU/h (NAT. Gas)	Total BTU/h Propane	Shipping		Individual Burner Ratings (BTU/h)			
				Cu Ft	lbs/kg	Burner	NAT.	PRO.	
C48-1R	48" Valve Control Griddle w/standard Oven & 12" Cabinet	160,000	155,000	55	1140/517	Griddle	30,000	30,000	
C48-1C*	48" Valve Control Griddle w/convection Oven & 12" Cabinet	157,000	155,000	55	1140/517	Standard Oven	40,000	35,000	
C48-1S	48" Valve Control Griddle w/storage Base & 12" Cabinet	120,000	120,000	55	940/426	Convection Oven	37,000	35,000	
C48-1M	48" Valve Control Griddle Modular Top	120,000	120,000	25	640/290	Interior Dimensions: In (mm)			
C48-1-1R	48" T-stat Griddle w/standard Oven & 12" Cabinet	160,000	155,000	55	1140/517	Product	Height	Width	Depth
C48-1-1C*	48" T-stat Griddle w/convection Oven & 12" Cabinet	157,000	155,000	55	1140/517	Standard Oven	13-1/2 (343)	26-1/4 (667)	29 (737)
C48-1-1S	48" T-stat Griddle w/storage Base & 12" Cabinet	120,000	120,000	55	940/426	Convection Oven	13-1/2 (343)	26-1/4 (667)	25 (635)
C48-1-1M	48" T-stat Griddle Modular Top	120,000	120,000	25	640/290	Cabinet Base	20-1/2 (521)	32-1/4 (819)	31 (787)
						Gas Pressure	NAT.	PRO.	
						Minimum Supply	7" WC	11" WC	
						Manifold Operating Pressure	6" WC	10" WC	
						Gas Manifold	1-1/4" NPT		

*1/3 hp motor 120V 60 Hz 0.6A c/w NEMA 5-15P cord & plug.

Combustible Wall Clearance	
Sides	Back
10" (254mm)	6" (152mm)

Garland reserves the right to make changes to the design or specifications without prior notice.

Garland Commercial Ranges Ltd.
1177 Kamato Road,
Mississauga, Ontario
L4W 1X4 CANADA

General Inquires 1-905-624-0260
USA Sales, Parts and Service 1-800-424-2411
Canadian Sales 1-888-442-7526
Canada or USA Parts/Service 1-800-427-6668

www.garland-group.com
7894
01/24

