

# Electric XPress Grill

## Models

- XPE24AC



Model XPE24AC

## Standard Features

- Programmable control for each cooking lane precisely controls:
  - Automatic lifting and lowering of upper platen
  - Cooking gap and time
- EasyTouch™ screen design is simple and intuitive with Press and Go interface
- Advanced temperature control, smart anticipation versus on-off
  - Eliminates temperature overshoot and undershoot
  - Increases temperature uniformity with five independently controlled heat zones - three on lower plate and two on upper platen
  - Each lane can be set to a different temperature for menu flexibility, eg., all-day breakfast
  - Each lane can be turned Off when not required - saving energy
- Recipes are programmed by setting grill temperature, platen temperature, cooking gap up to 1.12 inches (2.9 cm) and cook time
- Allowable active compression cooking
- USB interface to update menus
- User interface provides advanced diagnostics and error logging for ease of service and increased first-time fix

- Stainless steel front, top and sides
- Stainless steel dual side grease collectors
- Height adjustable swivel casters (4) with front brakes
- IPX4 water resistant rating

## Specifications

The XPress Grill's upper and lower griddle plates cook both sides simultaneously, reducing cook times by up to 50%. Upper griddle plate is automatically raised and lowered by a lift system powered by a quiet actuator.

Lower griddle plate made of 3/4" (19mm) thick carbon steel, machine ground and highly polished.

Lower griddle plate heated by three electric heating elements.

Upper platen constructed from a multi-element, nickel plated cast aluminum electric heater.

Upper platen provided with replaceable quick release Teflon sheets.

Available in three phase power for a Delta wiring configuration.

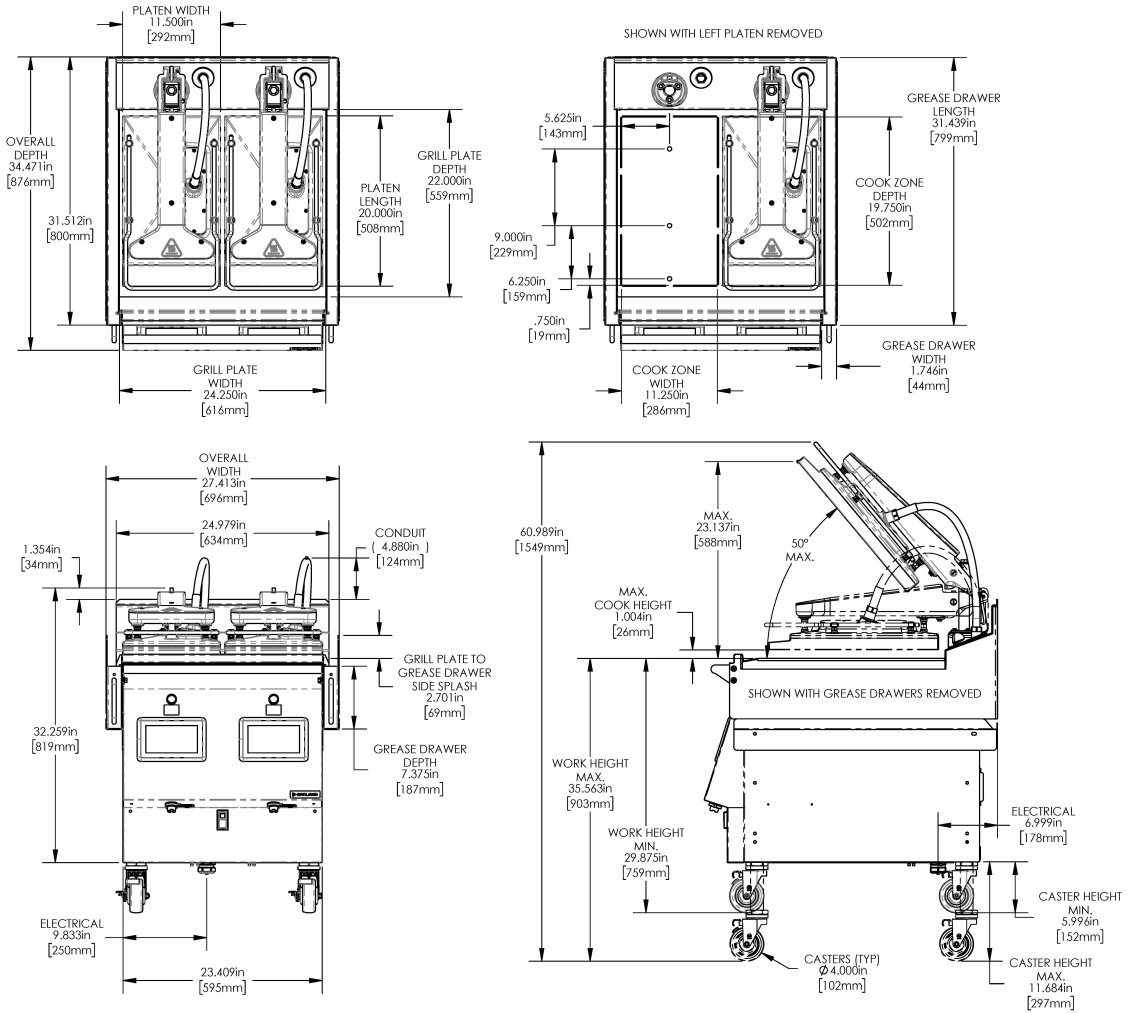
Voltage sensing and power management to adjust power to electrical system voltage.

Available with CSA approvals. All have NSF approval.

Installation with zero clearance against non-combustible surfaces.



# Electric XPress Grill



| Electrical Input Specification -DELTA |                     |                   |      |      |            |
|---------------------------------------|---------------------|-------------------|------|------|------------|
| XPE24AC CSA Models - Delta            |                     |                   |      |      |            |
| Model                                 | Volts 3 Ph 50/60 Hz | Total Current (A) |      |      | Power (kW) |
|                                       |                     | L1                | L2   | L3   |            |
| 2 Platen                              | 200V                | 48.4              | 48.4 | 48.4 | 16.1       |
|                                       | 208V                | 47.4              | 47.3 | 47.3 | 16.3       |
|                                       | 220V                | 42.7              | 43.0 | 43.0 | 15.8       |
|                                       | 230V                | 40.1              | 40.6 | 40.6 | 16.0       |
|                                       | 240V                | 39.1              | 39.5 | 39.5 | 16.0       |

Welbilt reserves the right to make changes to the design or specifications without prior notice.

**Garland Commercial Ranges Ltd.**  
 1177 Kamato Road,  
 Mississauga, Ontario  
 L4W 1X4 CANADA

**General Inquires 1-905-624-0260**  
**USA Sales, Parts and Service 1-800-424-2411**  
**Canadian Sales 1-888-442-7526**  
**Canada or USA Parts/Service 1-800-427-6668**

[www.garland-group.com](http://www.garland-group.com)  
 7925  
 08/21

