



Project _____
 Item _____
 Quantity _____
 CSI - 11400 _____
 Approval _____
 Date _____

AquaScrubber Pot and Pan Washing System

- Automatic scrub sink reduces labor costs up to 56%.
- Innovative angled corners with 2 jets in each corner keep the ware moving
- No corners = No jams
- 2 hp TEFC pump
- Custom build to your application or choose from 2 pre-engineered systems



STANDARD FEATURES

- Heavy duty pump with a 2 hp TEFC motor
- Basket style high capacity lever action waste drain
- Easy clean seamless front skirt
- Fast flow mixing faucets
- Single point electrical connection: motor, controls, heater
- Stainless steel utensil basket
- Dual water temperature settings 110 low/130 high
- 2.5 kW heater with low water protection and dual temperature control
- Welded support legs with s/s feet
- 300 series stainless steel
- NEMA 4X control panel enclosure

OPTIONS

- Undershelf on clean end drain board
- Sink overflows
- 1 to 8 hour pump timer
- Scrap trough in drain board
- Overshelf with mounting brackets (12" increments, 60" and up)
- End splash
- Disposal and cone (in soiled drain board, 48" minimum length)
- Hot water sanitizing booster heater
- Scrapper drain board with pre-rinse faucet
- Shelves (cantilevered or wall mounted)

SPECIFIER STATEMENT

Specified unit will be an Insinger AquaScrubber pot and pan washing system. Featured include heavy duty pump with 2-HP TEFC motor, basket style high-capacity lever action waste drain, fast flow mixing faucets, 2.5kW heater with low water protection and dual temperature control, and 300 series stainless steel construction.



Additional Information

Motor Size	2 hp
Heater Size	2.5 kW
Shipping Weight	Dash 109- 557 lbs. Marathon 140- 650 lbs.

Current Draw Amps			
	Heater	Pump & Controls	Total
208/1/60	12.0	9.6	21.6
220-240/1/60	10.9	8.9	19.8
208/3/60	6.9	5.9	12.8
220-240/3/60	6.3	5.6	11.9
440-480/3/60	3.1	2.8	5.9

SPECIFICATIONS

CONSTRUCTION- Entire unit constructed of 300 series polished stainless steel.

SINKS AND DRAINBOARDS- Constructed of 14 gauge s/s. All interior corners are coved to 3/4" radius. Top is 14 gauge s/s all welded with 11" high splash on front and sides with a 1 3/4" rolled edge.

WASH SINK- Consists of side mounted intake manifold and specially designed nozzles strategically placed in corners for maximum scrubbing action. Intake manifold includes hinged access panel to facilitate cleaning of the intake chamber, heater and probes.

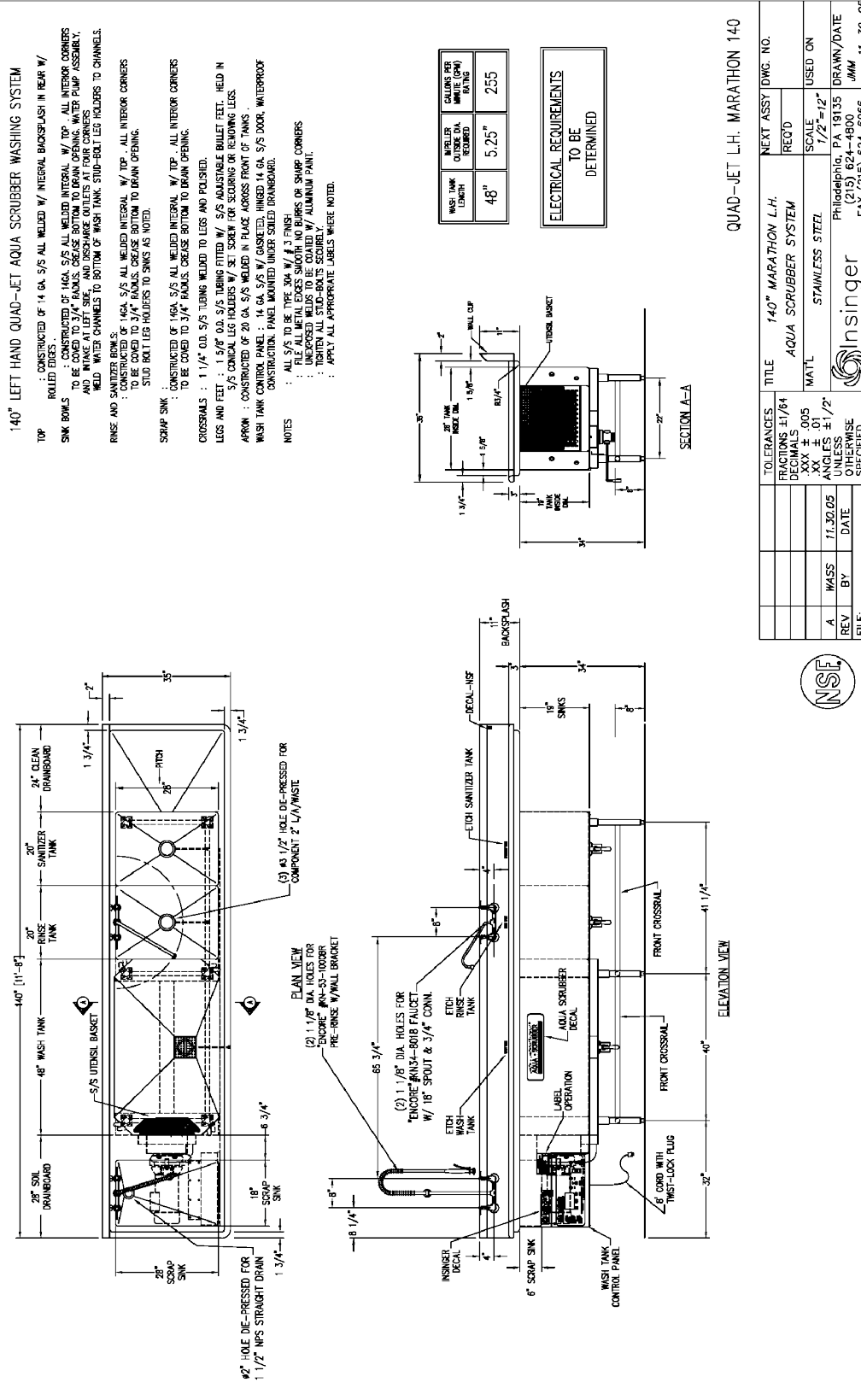
PUMP- The pump is heavy duty stainless steel construction with a 4" diameter intake and 3" diameter discharge. The motor is 2 hp totally enclosed, fan cooled with permanently sealed bearings.

SUPPORT- The wash sink is supported by heavy gauge stainless steel channels welded to the underside of the sink. H frame leg assemblies are removable and have stainless steel adjustable bullet feet.

CONTROL PANEL- Control enclosure is made of 300 series stainless steel, completely welded and waterproof (NEMA 4X). On/off power switch, dual water temperature switch (low and high), on/off pump motor switch and reset switch. Heavy duty pump contactor and overload. Heavy duty grounded plug. Controls labeled in English and Spanish.

PRE-ENGINEERED SYSTEMS- The Dash 109 and Marathon 140.

Technical Drawings

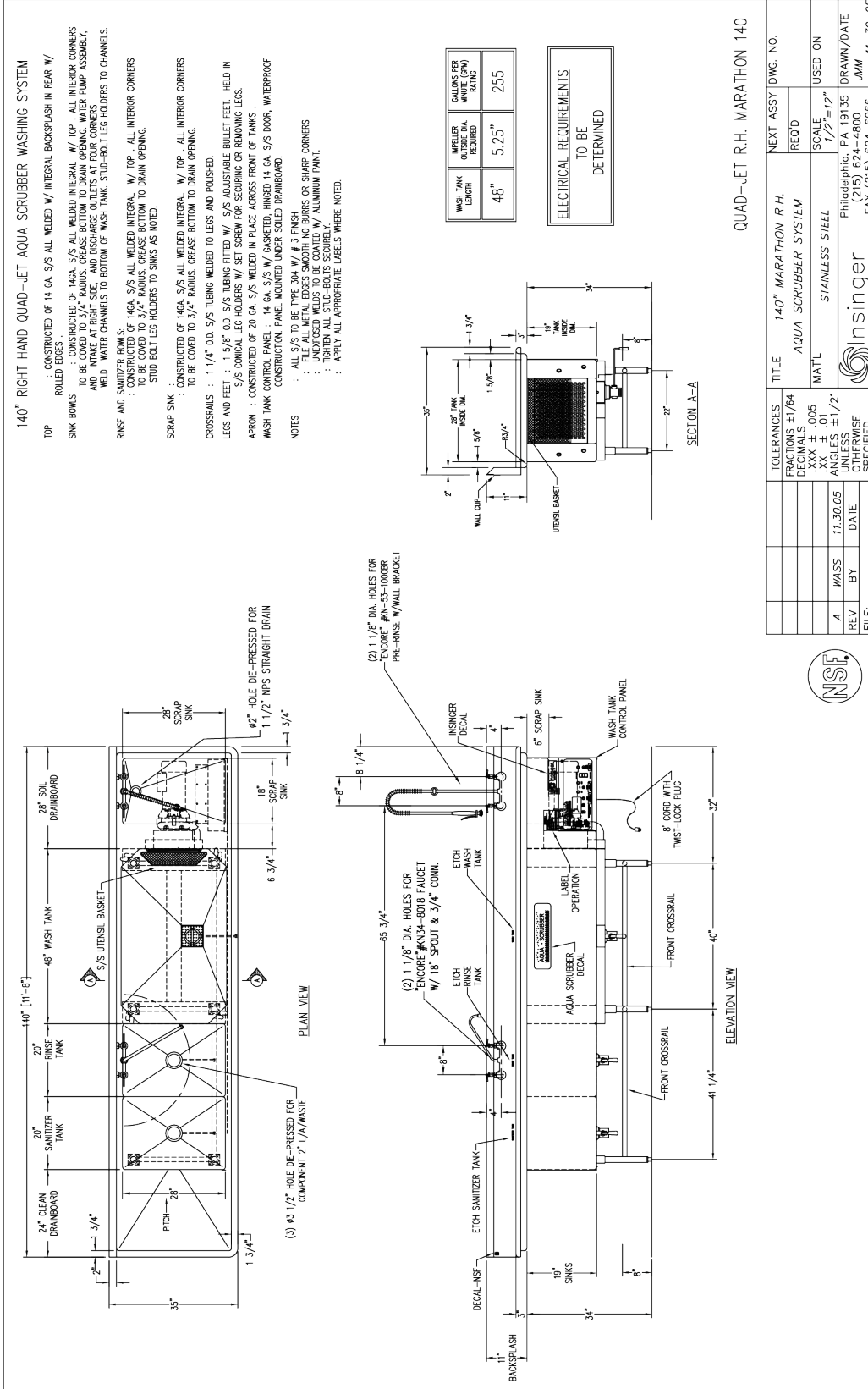


QUAD-JET L.H. MARATHON 140

TITLE	140" MARATHON L.H. AQUA SCRUBBER SYSTEM	NEXT ASSY DWG. NO.
MATL	STAINLESS STEEL	USED ON
SCALE	1/2" = 12"	
REV.	BY: WASS	DATE: 11.30.05



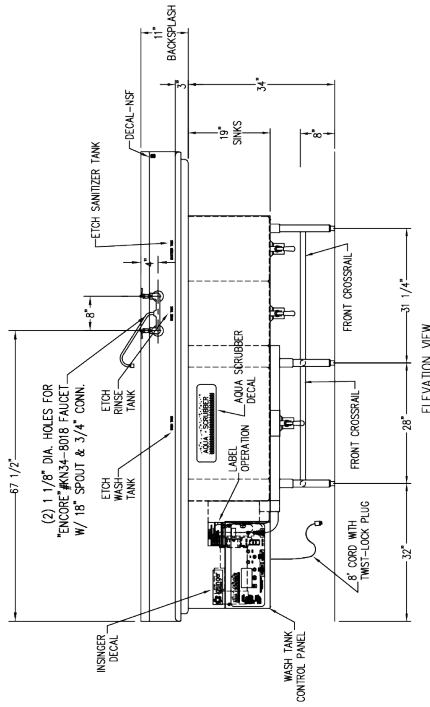
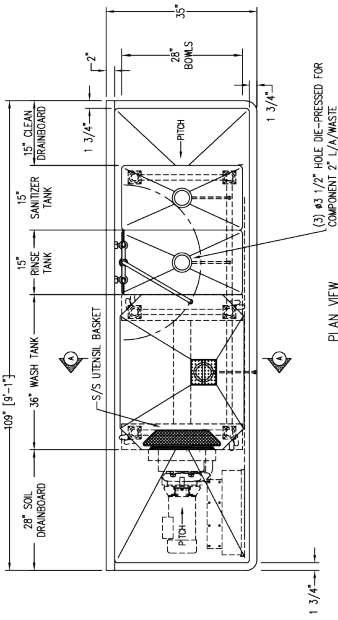
Technical Drawings



Technical Drawings

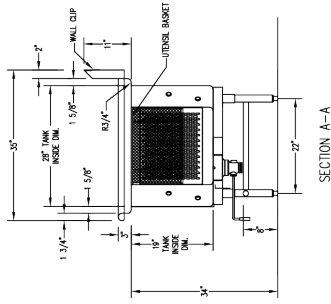
109" LEFT HAND QUAD-JET AQUA SCRUBBER WASHING SYSTEM

- TOP : CONSTRUCTED OF 14 GA. S/S ALL WELDED W/ INTEGRAL BACKSPASH IN REAR W/ ROLLED EDGES .
- SINK BOWLS : CONSTRUCTED OF 14GA. S/S ALL WELDED INTEGRAL W/ TOP . ALL INTERIOR CORNERS TO BE COVED TO 3/4" RADIUS. GREASE BOTTOM TO DRAIN OPENING. WATER PUMP ASSEMBLY, WASH TANK, RINSE TANK, ETCH SANITIZER TANK, S/S UTENSIL BASKET, STUD-BOLT LEG HOLDERS TO CHANNELS. WELD WATER CHANNELS TO BOTTOM OF WASH TANK. STUD-BOLT LEG HOLDERS TO CHANNELS.
- RINSE AND SANITIZER BOWLS : CONSTRUCTED OF 14GA. S/S ALL WELDED INTEGRAL W/ TOP. ALL INTERIOR CORNERS TO BE COVED TO 3/4" RADIUS. GREASE BOTTOM TO DRAIN OPENING. STUD BOLT LEG HOLDERS TO SINKS AS NOTED.
- CROSSRAILS : 1 1/4" O.D. S/S TUBING WELDED TO LEGS AND POLISHED.
- LEGS AND FEET : 1.5" O.D. S/S TUBING DITTED W/ S/S ADJUSTABLE BULLET FEET. WELD IN S/S CONICAL LEG HOLDERS W/ SET SCREW FOR SCISSORING OR REMOVING LEGS.
- APRON : CONSTRUCTED OF 20 GA. S/S WELDED IN PLACE AHEAD FRONT OF TANKS.
- WASH TANK CONTROL PANEL : 14 GA. S/S W/ CHASETED. HINGED 14 GA. S/S DOOR. WATERPROOF CONSTRUCTION. PANEL MOUNTED UNDER SILENT DRAINBOARD.
- NOTES :
- ALL S/S TO BE TYPE 304 W/ #16 FINISH
 - FILE ALL METAL EDGES SMOOTH NO BURRS OR SHARP CORNERS
 - UNEXPOSED WELDS TO BE COATED W/ ALUMINUM PAINT.
 - TIGHTEN ALL STUD-BOLTS SECURELY.
 - APPLY ALL APPROPRIATE LABELS WHERE NOTED.



WASH TANK LENGTH	MILLER OUTSIDE DIA. CLEARANCE	GALLONS PER MINUTE (GPM) RATING
36"	4.75"	190

ELECTRICAL REQUIREMENTS
TO BE
DETERMINED

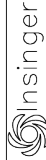


QUAD-JET L.H. DASH 109

TOLERANCES	TITLE	NEXT ASSY DWG. NO.
POSITIONS ±1/64	109" DASH L.H.	RECD
DEPTHS ±1/64	AQUA SCRUBBER SYSTEM	SCALE
XXX ± .005	MAT'L STAINLESS STEEL	USED ON
.XX ± .01		1/2"-12"
ANGLES ±1/2°		
UNLESS OTHERWISE SPECIFIED		
FILE:		



Philadelphia, PA 19135
 215-874-8800
 FAX (215) 824-8866



JMM 11-30-05

Technical Drawings

