

ITEM #: _____	QTY: _____
MODEL #: _____	
PROJECT NAME: _____	

040519

3601 S. Banker St. Effingham, IL 62401 • P.O. BOX 609 • Ph: (888) 431-2667 • Fax: (800) 433-2667

"PB-STD" WALL MOUNT SOAP AND TOWEL DISPENSER



FEATURES:

- FOLD OUT TOWEL DISPENSER WITH MAGNET CATCHES
- USE WITH C-FOLD TOWELS
- INCLUDES RIGIDLY MOUNTED SOAP DISPENSER (PB-SD-1)
- MOUNTS TO WALL WITH SCREWS
- FOR USE WITH ANY 17" WIDE HAND SINK WITH 14" X 10" BOWL OR STANDALONE USE

MATERIAL:

- 18 GAUGE TYPE 300 STAINLESS STEEL WITH #4 POLISH SATIN FINISH



PB-STD-1410

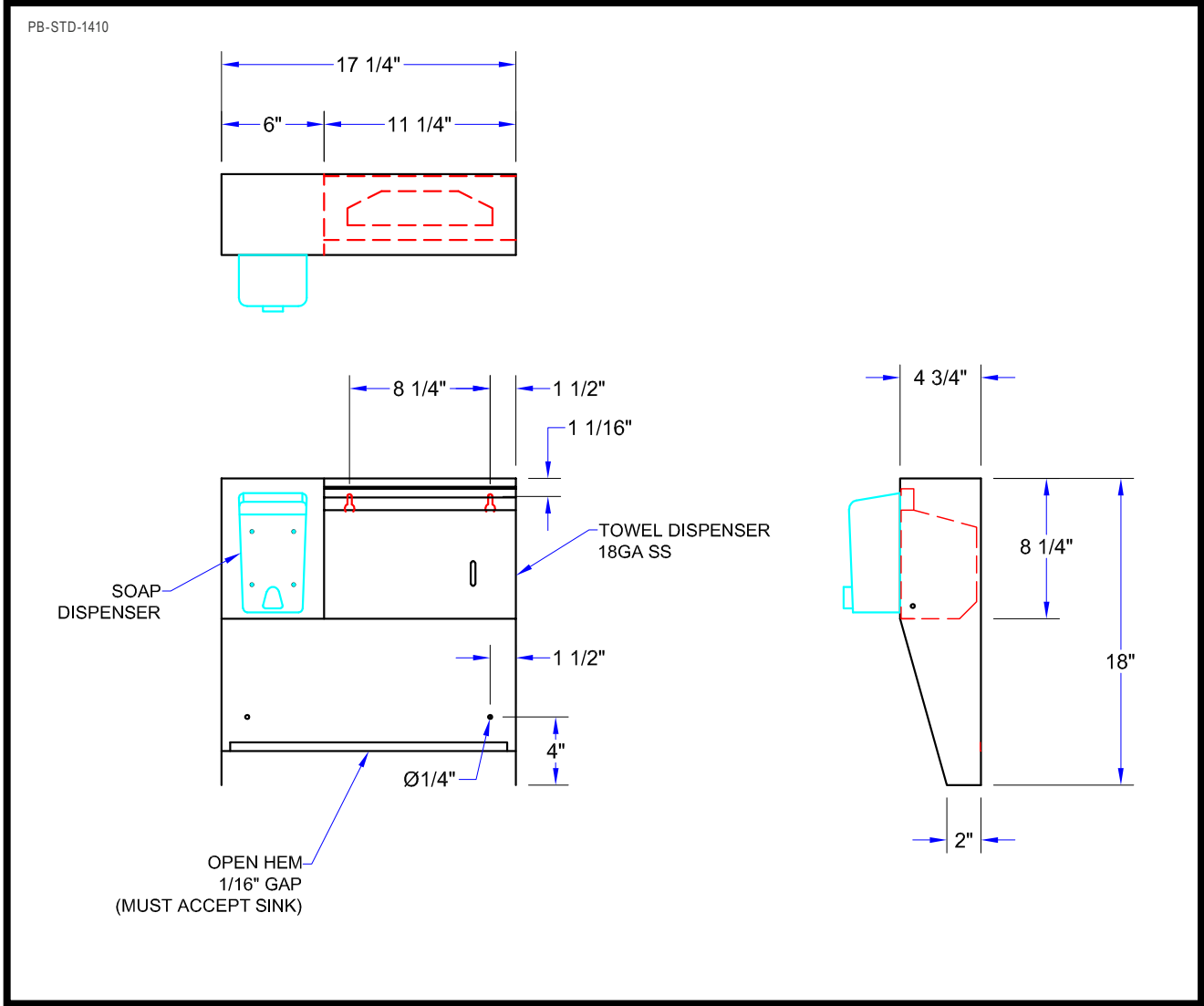


PB-STD-1410 W/ HAND SINK ATTACHED
(HAND SINK SOLD SEPERATLY)

"PB-STD" SOAP AND TOWEL DISPENSER

MODEL	QTY
PB-STD-1410	

DETAILED SPECIFICATIONS



"PB-STD" WALL MOUNT SOAP AND TOWEL DISPENSER

MODEL	DIMENSIONS (LXWXH)	WEIGHT (LBS)
PB-STD-1410	17-1/2" X 4-3/4" X 18"	23

SOME UNITS SHIP UNASSEMBLED FOR REDUCED SHIPPING COST. ALL DIMENSIONS ARE TYPICAL. TOLERANCE +/- .500"
 John Boos & Co. is constantly engaged in a program of improving products and therefore reserves the right to change specifications without prior notice.



Boos
lock

AQ AutoQuotes

3601 S. Banker St. • Effingham, IL 62401 • PO BOX 609 • quotes@johnboos.com

www.johnboos.com

032119

1017