



F160S

31.5" (80cm) Deep Open Shelf Utility Stands

Project _____
 Item _____
 Quantity _____
 CSI Section 11400
 Approved _____
 Date _____

Models

- F160S36 - 36" length open shelf utility stand
- F160S48 - 48" length open shelf utility stand
- F160S60 - 60" length open shelf utility stand
- F160S72 - 72" length open shelf utility stand
- F160S84 - 84" length open shelf utility stand
- F160S96 - 96" length open shelf utility stand



F160S48

Standard Features

- Top is constructed of 16-gauge stainless steel
- Work height is 36"
- Two pieces of 14-gauge U-channel are welded and glued under the top for strength and sound deadening
- Two shelves constructed of stainless steel with double hemmed nosing with bracing under center shelf and under bottom shelf and sound-deadening adhesive
- 14-gauge leg rails that run the entire length of the unit
- Units are standard with unfinished ends
- One year parts and 90 day labor standard warranty

Options & Accessories

- Stainless steel back
- Stainless steel end
- Laminate back
- Laminate end
- Fixed or adjustable height casters
- Urn trough

Specifications

Top is constructed of 16-gauge stainless steel, with integral 2.12" (5cm) square nosing on front and 4.00" (10cm) high by 2.00" (5cm) thick backsplash on rear.

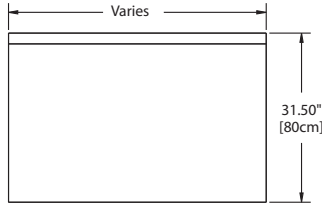
Base has (2) 22-gauge stainless steel shelves. Shelves to have 5.62" (14cm) turn-up in rear. Shelf sides are constructed of stainless steel. Optional ends are constructed of 22-gauge stainless steel.

Legs: Unit is mounted on 6.13" (16cm) high adjustable stainless steel legs.

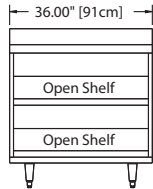


F160S: 31.5" (80cm) Deep Open Shelf Utility Stands

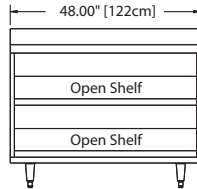




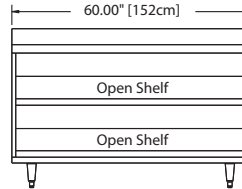
Plan View
All Models



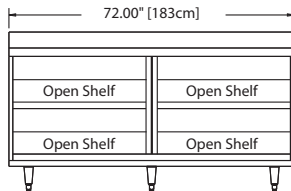
Elevation View
F16OS36



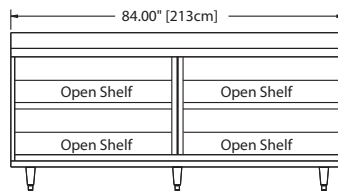
Elevation View
F16OS48



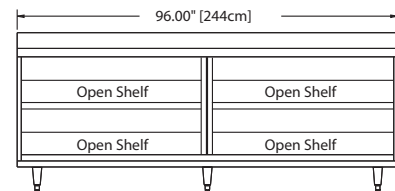
Elevation View
F16OS60



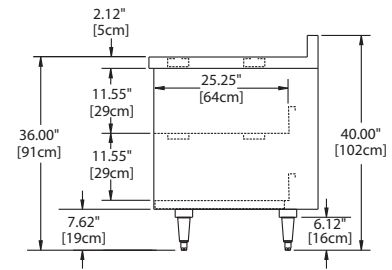
Elevation View
F16OS72



Elevation View
F16OS84



Elevation View
F16OS96



End View

Specifications			
Model	Number Of Shelves	Shelves Capacity sq. ft.	Ship Weight
F16OS36	2	11.9	230lbs/104kg
F16OS48	2	16.1	270lbs/122kg
F16OS60	2	20.3	310lbs/140kg
F16OS72	2	24.5	350lbs/159kg
F16OS84	2	28.7	390lbs/177kg
F16OS96	2	32.9	430lbs/195kg

Delfield reserves the right to make changes to the design or specifications without prior notice.