



**John
BOOS**
Since 1887

ITEM #: _____ QTY: _____
 MODEL #: _____
 PROJECT NAME: _____

072117

3601 S. Banker St. Effingham, IL 62401 • P.O. BOX 609 • Ph: (888) 431-2667 • Fax: (800) 433-2667

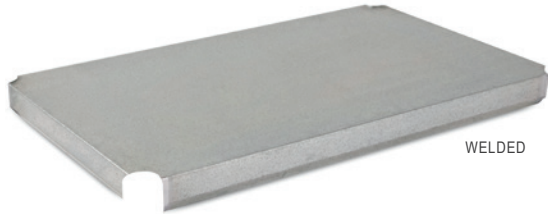
"LSM" OPTIONAL LOWER SHELVES - GALVANIZED 18GA

FOR MODEL: M, M-1



FEATURES:

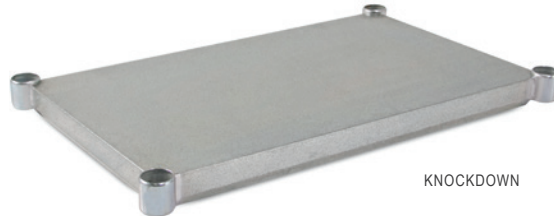
- OPTIONAL UNDERSHELF 18 GAUGE GALVANIZED STEEL (36" WIDE ONLY - 16 GAUGE GALVANIZED STEEL)
- FOR SERIES M AND M-1 TABLES
- KNOCKDOWN SETUP, AVAILABLE WELDED
- ALL MODELS ARE NSF CERTIFIED



WELDED

CONSTRUCTION:

- GALVANIZED STEEL SHELVES ARE MIG WELDED



KNOCKDOWN

MATERIAL:

- SHELF: 18 GAUGE GALVANIZED STEEL (36" WIDE SHELVES ONLY - 16 GAUGE GALVANIZED STEEL)



KNOCKDOWN

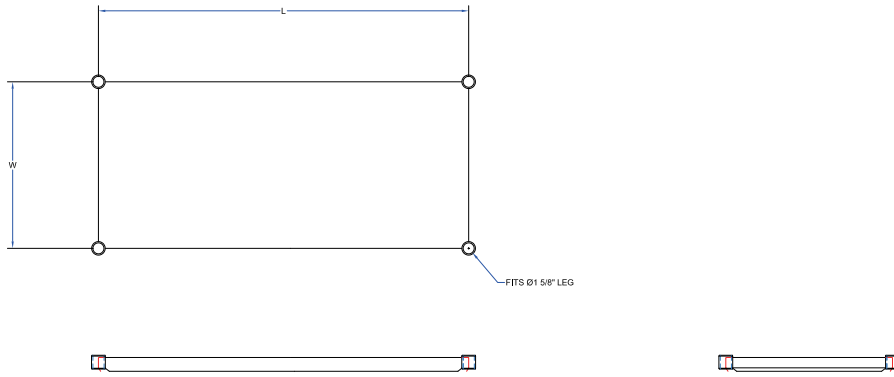
OPTIONAL LOWER SHELVES - GALVANIZED 18GA

L	24" WIDE	QTY	30" WIDE	QTY	36" WIDE	QTY
36"	LS324M		LS330M		LS336M *	
48"	LS323M		LS430M		LS436M *	
60"	LS524M		LS530M		LS536M *	
72"	LS624M		LS630M		LS636M *	
84"	LS724M		LS730M		LS736M *	
96"	LS824M		LS830M		LS836M *	
108"	LS824MA		LS830MA		LS836MA *	
120"	LS1024M		LS1030M		LS1036M *	

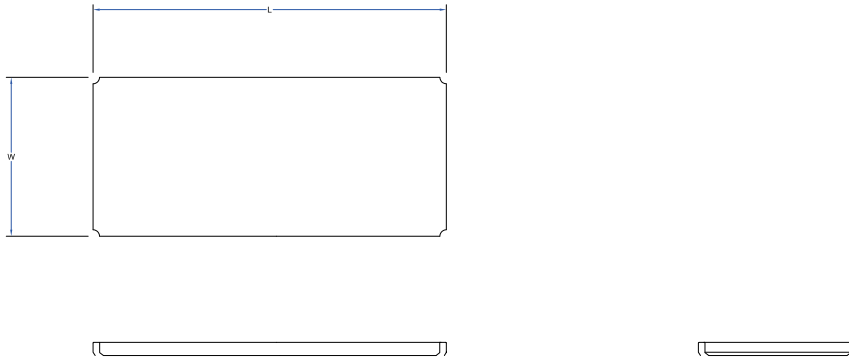
* 16 GAUGE

DETAILED SPECIFICATIONS

KNOCKDOWN



WELDED



OPTIONAL LOWER SHELVES - GALVANIZED 18GA

L	24" WIDE	WT. (LBS)	30" WIDE	WT. (LBS)	36" WIDE	WT. (LBS)
36"	LS324M	15	LS330M	18	LS336M *	27
48"	LS323M	20	LS430M	24	LS436M *	35
60"	LS524M	24	LS530M	30	LS536M *	43
72"	LS624M	35	LS630M	35	LS636M *	51
84"	LS724M	32	LS730M	40	LS736M *	59
96"	LS824M	37	LS830M	45	LS836M *	67
108"	LS824MA	47	LS830MA	58	LS836MA *	75
120"	LS1024M	57	LS1030M	70	LS1036M *	83

* 16 GAUGE

SOME UNITS SHIP UNASSEMBLED FOR REDUCED SHIPPING COST. ALL DIMENSIONS ARE TYPICAL. TOLERANCE +/- .500"

John Boos & Co. is constantly engaged in a program of improving products and therefore reserves the right to change specifications without prior notice.

