

## S Series Horizontal Gear-Driven Slicers

ITEM: **44006**  
MODEL: MS-IT-0313-H

ITEM: **39631**  
MODEL: MS-IT-0350-H

ITEM: **38915**  
MODEL: MS-IT-0370-H

ITEM: **49532**  
MODEL: MS-IT-0370-H-R

### Simple and exceptional

These slicers are specifically designed to cut fresh meat. The large horizontal carriage has a double sliding table, specifically designed to cut fresh meat by providing a long stroke depth.

### FEATURES:

- Superglide: Specially treated gauge-plate and blade cover for a smoother performance that ensures precision cuts at all times
- Additional safety features: Fixed blade ring guard; aluminium thumb guard; interlock for carriage disassembly; No Voltage Release (NVR) switch and protections on the sharpener/blade



Aluminum Thumb Guard



Control Push Button (NVR Switch)



Designed for Easy-cleaning



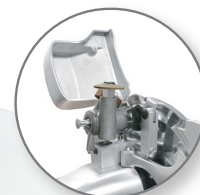
Interlock for Carriage Disassembly



Ring Guard



Superglide



Built-in Sharpener



Slice Thickness Control

1-833-487-3686

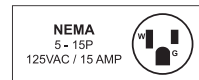
[www.trentoequipment.com](http://www.trentoequipment.com)

[sales@trentoequipment.com](mailto:sales@trentoequipment.com)

Follow us on social media  
@trentoequipment



Authorized Dealer



**Technical Specification**

Features	12.3" Horizontal Gear-Driven	14" Horizontal Gear-Driven	15" Horizontal Gear-Driven	
Item	44006	39631	38915	49532
Model	MS-IT-0313-H	MS-IT-0350-H	MS-IT-0370-H	MS-IT-0370-H-R
Blade Size	12.3" (313 mm)	14" (350 mm)	15" (370 mm)	
Cut Size	10.6" x 8.9" (270 x 225 mm)	12.2" x 9.8" (310 x 205 mm)	14.6" x 10.2" (370 x 260 mm)	
Cut Thickness	0 - 0.98" (0 - 25 mm)			
Cheese Slicing*	■■■■			
Slicing Volume**	8 Hours or more			
RPM	250			
Power	300 W / 0.4 hp			
Electrical	110V / 60Hz / 1Ph			
Net Weight	84 lb. (38 kg.)	110 lb. (50 kg.)	125 lb. (57 kg.)	
Net Dimensions (WDH)	29" x 26" x 20" (737 x 440 x 508 mm)	26" x 28" x 21.7" (660 x 711 x 551 mm)	31.5" x 29.5" x 22" (800 x 749 x 559 mm)	
Gross Weight	101 lb. (46 kg.)	112 lb. (51 kg.)	140 lb. (63.5 kg.)	
Gross Dimensions (WDH)	33" x 28" x 27" (838 x 711 x 686 mm)	34" x 31" x 26" (863 x 787 x 660 mm)	36" x 34" x 27" (914 x 864 x 686 mm)	
Plug Type	NEMA 5 - 15P	NEMA 5 - 15P	NEMA 5 - 15P	
Additional Info	-	In compliance with Province of Quebec safety standards		



\*Cheese Slicing Ratings □□□□ Not Recommended ■■■ Occasional ■■■ Low ■■■ Medium ■■■ High  
 \*\*Results may vary due to product consistency and temperature

**TECHNICAL DRAWINGS**

