

**TOP VIEW**

**CAUTION:**

Electrical and plumbing connections must be made by a qualified Service Person who will comply with all available federal, state, and local Health, Electrical, Plumbing, and Safety codes.

\* Manufacturer reserves the right to modify these specifications in compliance with regulatory agencies and manufacturing expediency.

**NOTE:**  
All dimensions listed have a tolerance of + or - 1/8" unless otherwise noted.



**American Dish Service**  
Manufacturers of Ware Washing Equipment

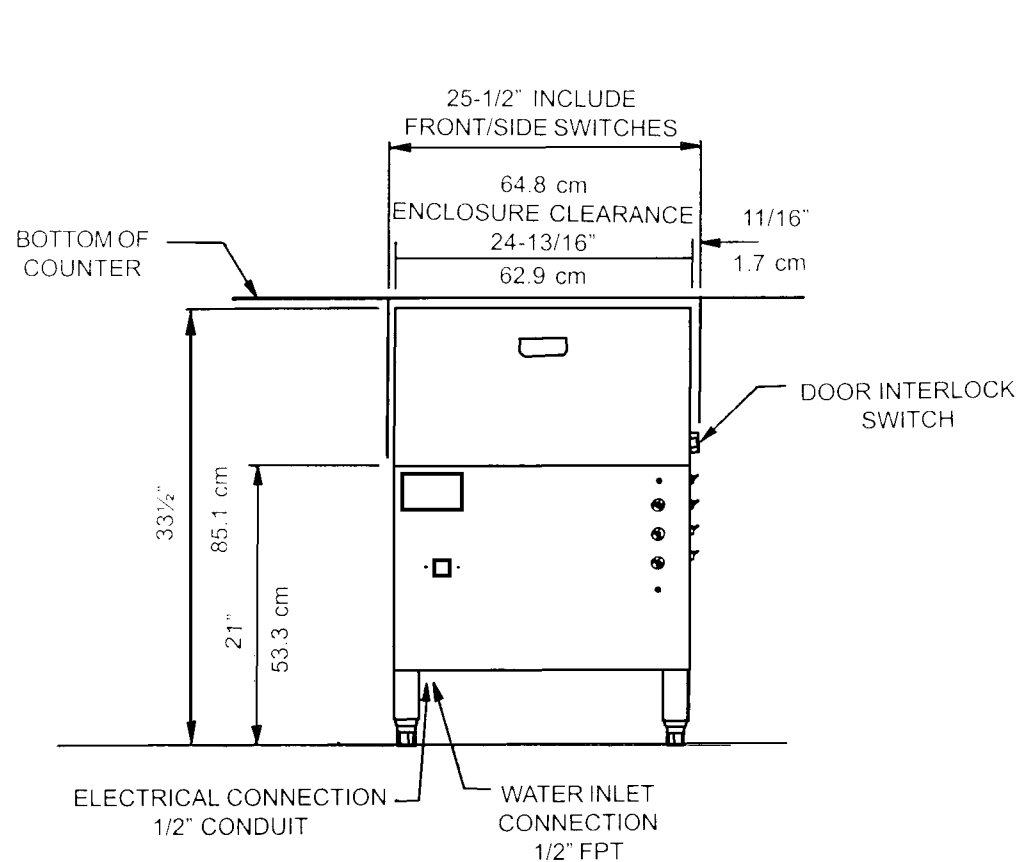
WWW.AMERICANDISH.COM

**ET Series Specifications**

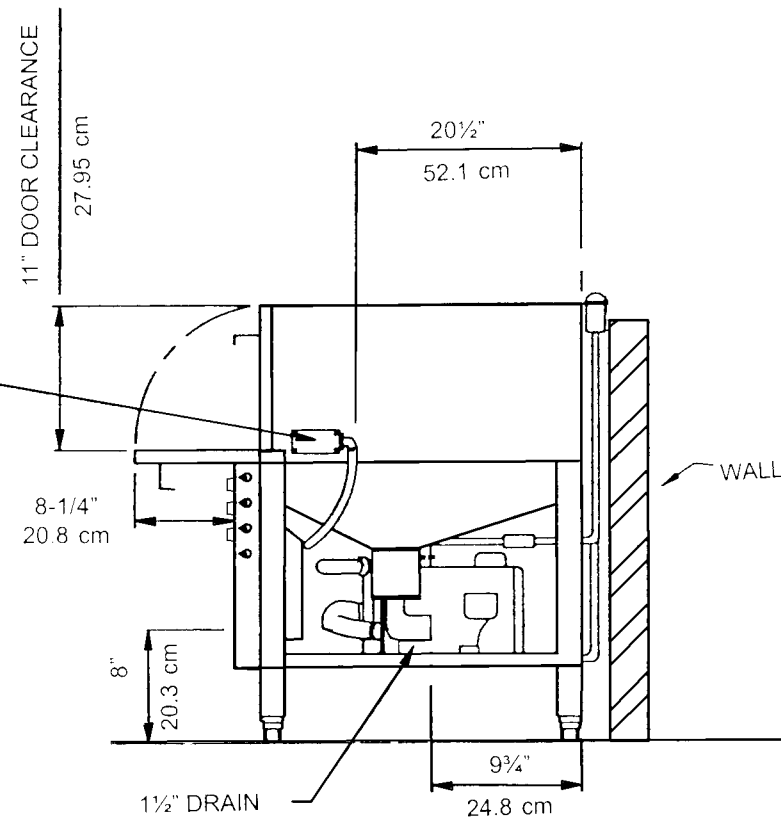
**ET-AF**

**FAMILY MODELS**

	ET-AF	ET-A	ET-AH
NSF RATED CAPACITY (RACKS/HOUR)	30	24	20
WASH TIME (IN SECONDS)	45	60	75
RINSE TIME (IN SECONDS)	30	45	60
DWELL (IN SECONDS)	15	15	15
TOTAL CYCLE TIME (IN SECONDS)	90	120	150



**FRONT VIEW**



**SIDE VIEW**

WATER TEMPERATURE OF SUPPLY WATER (NSF) **120° F. MINIMUM**  
(49° CELSIUS)  
WATER CONSUMPTION (NSF RATED) . **1.7 GALS. PER CYCLE**  
Or **6.4 liters/cycle**  
MOTOR RATING . . . . . **(1.125 KW) 1.5 HORSEPOWER**  
ELECTRICAL RATING (NEC) **115 Vac, 20amp breaker, 50/60Hz, 1 phase**

Connect to Supply Source using 10-12 AWG  
Copper wires using non-time delay fuse of 20  
amp rating or 20 amp circuit breaker.

RACK SIZE . . . **STANDARD 19.75" X 19.75" (Or 50.2 X 50.2 cm)**  
DOOR CLEARANCE\* . **11" TALL X 22.25" WIDE (Or 27.9 x 56.5 cm)**  
WATER INLET . . . . . **(1/2") F.P.T.**  
DRAIN SIZE . . . . . **(1-1/2") F.P.T.**  
HEIGHT OF STANDARD ET (ADJUSTER FEET WILL GIVE) **MIN: 33.5" - MAX:34.5"**  
(85.1 to 87.6 cm)  
HEIGHT OF ET-AF-3 . . . . . **MIN: 36.5" - MAX:37.5"** (92.7 to 95.2 cm)  
WIDTH (OVERALL) . . . . . **25.5"** (64.8 cm)  
DEPTH (OVERALL) . . . . . **29"** (73.6 cm)  
SHIPPING WEIGHT . . . . . **201 POUNDS** (91.2 kg)  
SHIPPING VOLUME (CRATED) . . . . . **28.6 CU. FT.** (.8 cu meters)

\*Also available in a 3" Taller Version with  
14" x 22.25" (35.8 x 57 cm) door clearance.  
Model ET-AF-3