



**Pre-Rinse Accessories**  
**B-0108-CF**

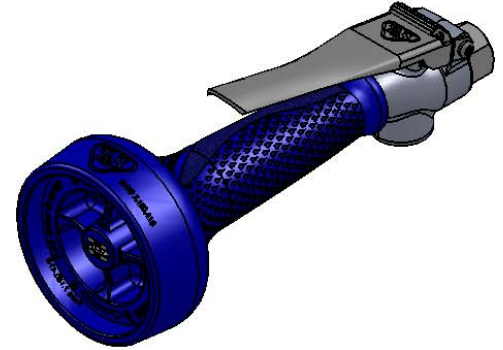
TAG:

*Low Flow Spray Valve*

**Architect/Engineering Specifications:**

0.65 GPM low flow spray valve, polished chrome plated forged body with stainless steel trigger and 3/4-20 UN male adapter. Certified to ASME A112.18.1/CSA B125.1, NSF 61-Section 9 and NSF 372. EPAAct 2005 compliant.

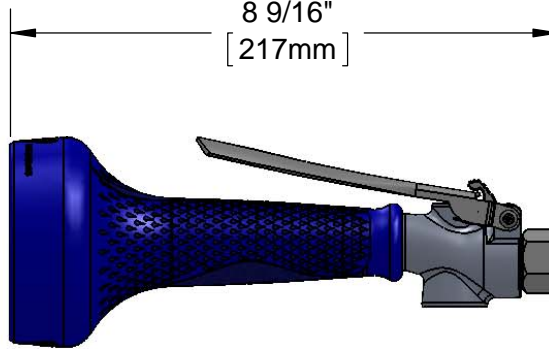
Job Name \_\_\_\_\_  
 Model Specified \_\_\_\_\_ Quantity \_\_\_\_\_  
 Variations Specified \_\_\_\_\_  
 Date \_\_\_\_\_



Ø 3 1/4"  
[ 83mm ]



8 9/16"  
[ 217mm ]



**Features & Benefits:**

- Chrome plated forged brass body
- 0.65 GPM JeTSpray spray valve
- 3/4-20 UN male inlet
- Fast action trigger
- Heat insulated handle with crush resistant grip
- Smart one-handed trigger lock
- Removable screen filter
- Material: Polished chrome plated brass body and rubber insulated handle

**Product Compliance:**

- ASME A112.18.1 / CSA B125.1
- NSF 61 - Section 9
- NSF 372 (Low Lead Content)
- EPAAct 2005 (PRSV)
- EPA WaterSense (PRSV)

**Warranty:** One Year (Limited)

**Performance Data:**

- Pressure: 20 - 125 psi
- Temperature: 40°F - 140°F
- Flow Rate: 0.65 GPM @ 60 psi



**T&S BRASS AND BRONZE WORKS, INC.**



• 2 Saddleback Cove • Travelers Rest, SC 29690  
 Ph 800-476-4103 • Fax 864-834-3518  
 • Simi Valley, CA • Ph 800-423-0150 • www.tsbrass.com

Date: 08/19/16