

a passion to inspire  
catherine hurand



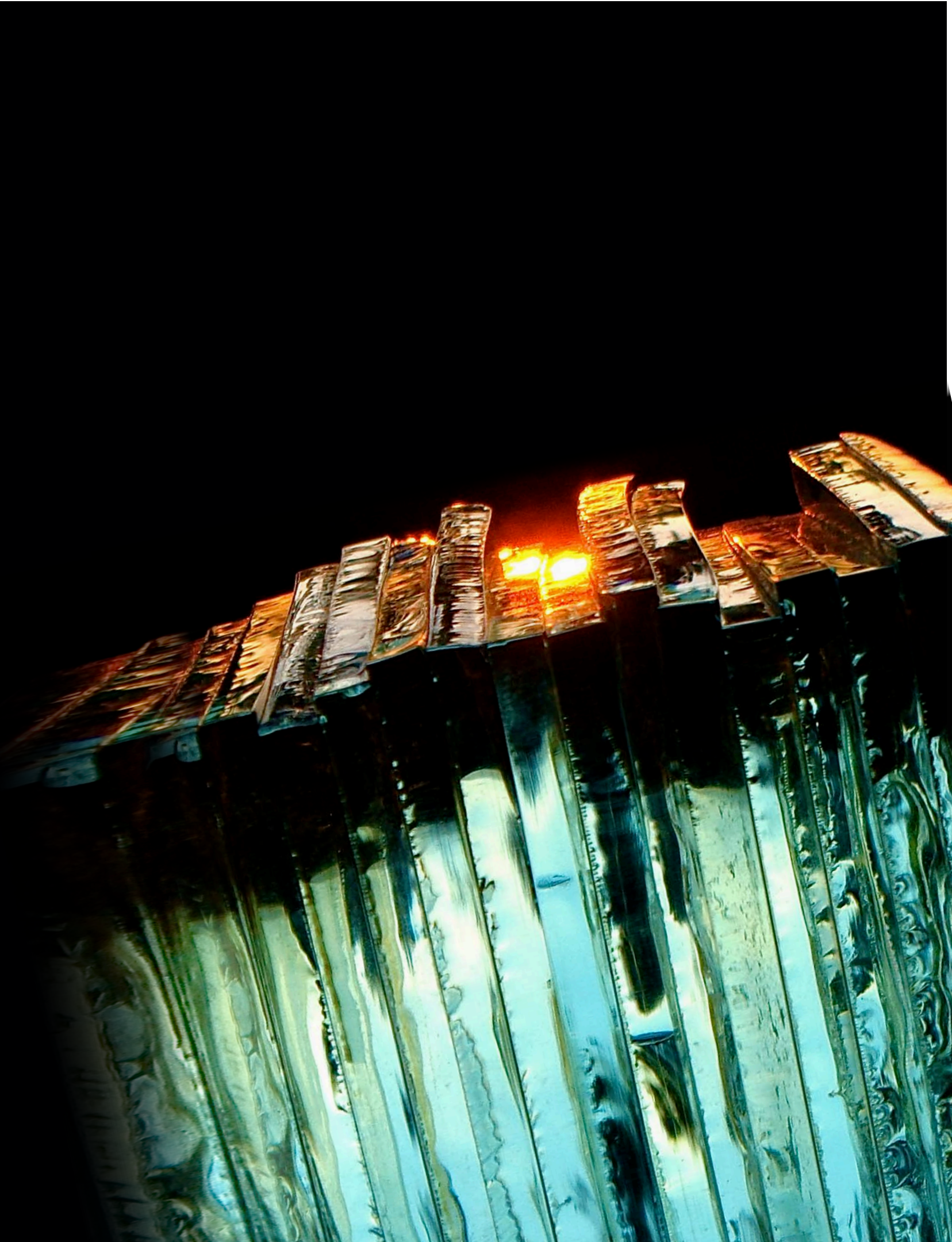


Trained in the most prestigious Parisian schools of fine and decorative arts, Catherine Hurand is a true sculptress, expressing her craft in architecture, design and visual arts. Attracted to the rough aspect of the mineral world, she often works in glass - a material she fluxes into living, moving pieces.

A 1998 award winner for "Talents à la carte" for the decorative art salon "Maison et Objet," Catherine has created services for many prestigious customers. Among them, chefs Alain Ducasse and Georges Clemenceau - aircraft carrier's admiral. It is on that very ship that the then French President Jacques Chirac enjoyed his official visit meal on a set designed by Catherine.

Catherine's talents have now led her to the design of crockery and glassware; A move calling for the industrialization of her manufacturing process. Her designs are a challenge to the law of physics, as she works her materials to an almost impossible extent. The fragil glass is solid, yet maintains a delicate aspect of brilliance.

†Catherine's work is illustrated through her own words as she shares, "to make the sparkling frost of the dawn dance, I've played with fire".



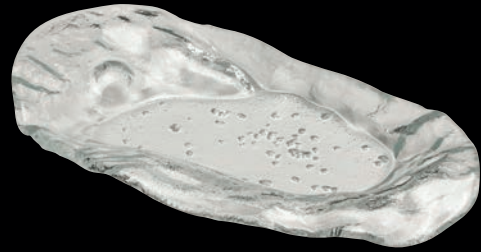
catherine hurand venus



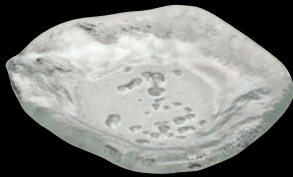
Evoking a wild, organic feel, while still maintaining a sensual, feminine air, Venus by Catherine Hurand sets any tabletop apart from the rest. Though seemingly free-form, each Venus piece is uniform in shape, offering stackability.



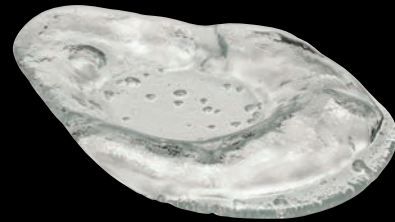
**6525B421**  
Plate 12 ¼" X 7 ½"



**6525B422**  
Plate 9 ¾" X 5 ½"



**6525B424**  
Plate 4 ¾" X 4"



**6525B423**  
Plate 6 ¾" X 4 3/8"



**6525B425**  
Bowl 9 ¾" X 8 5/8" X 3 1/8" ( 22 oz)

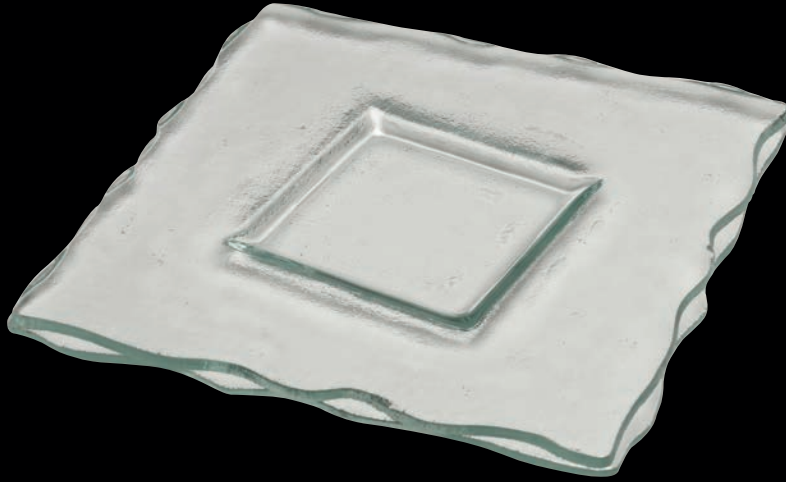


**6525B426**  
Bowl 4" X 2" ( 3 oz)

catherine hurand zeus



Strong, masculine & eye-catching, the Zeus collection by Catherine Hurand demands attention on the tabletop. Featuring an irregular outer edge, and offset, squared inner lines, the pieces can even be likened to the unfinished hems of current fashion trends. With each piece made of extra clear 4mm double layer fused glass, Zeus offers the perfect vessel for a signature course or dish.



**6524B411**  
Square Plate 11"



**6524B412** Rectangle Plate 11" X 9 1/2"  
**6524B413** Rectangle Plate 11" X 6 1/4"



**6524B414**  
Square Plate 6 1/4"



**6524B415**  
Square Plate 5 1/8"

catherine hurand **apollo** NEW



Brilliant in color and inspired in design – A pure expression of beauty.



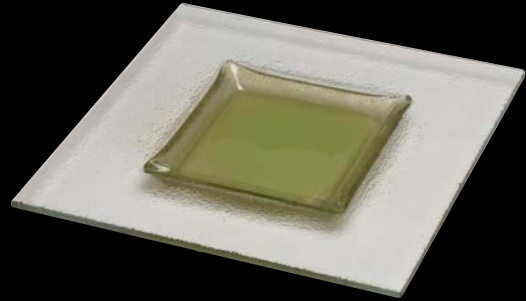
NEW

apollo

catherine hurand



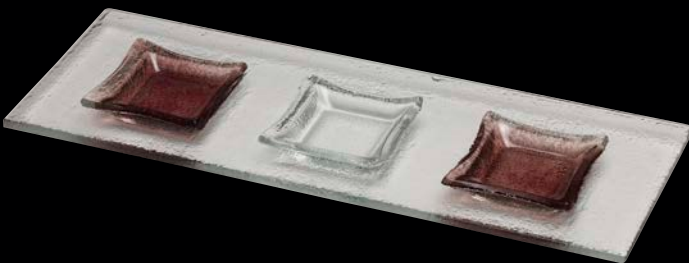
**6526B401**  
Square Plate W/Clear Center  
6 1/4" (4 1/8" Center)



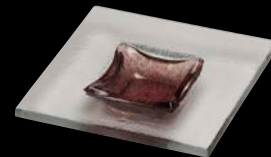
**6526B402**  
Square Plate W/Green Center  
9 7/8" (5 3/8" Center)



**6526B403**  
Rectangle Plate W/Green Center  
8 5/8" X 4 3/4" (7 1/4" X 3 3/8" Center)



**6526B404**  
Rectangle Plate W/Purple and Clear Square Centers  
13 3/8" X 4 3/4" (2 3/4" Centers)



**6526B405**  
Square Plate W/Purple Center  
4 3/8" (2 1/8" Center)

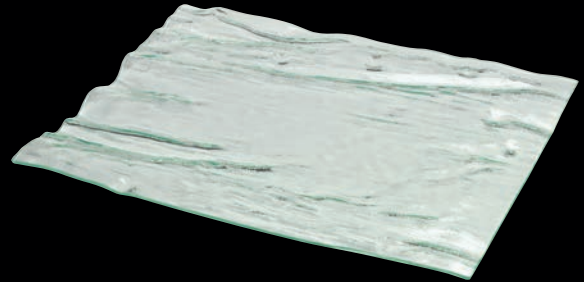
catherine hurand ice buffet



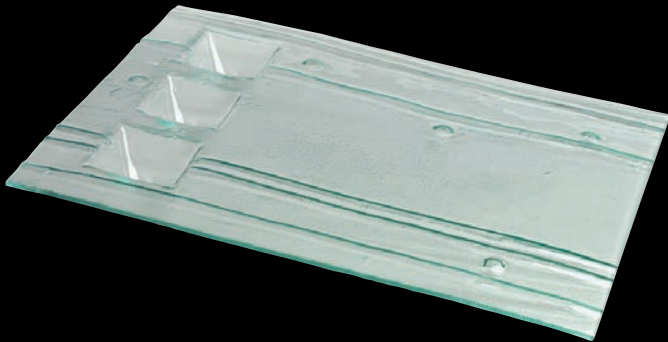
A stunningly unique approach to buffet presentation, Creations Ice Buffet adds a discernable value to any style of food presentation. With a textured surface, self contained sauce wells and optional stands, the modern appeal of Ice Buffet is sure to make a lasting impression.



**6503G060**  
Buffet Platter Angled Well 19" x 15 3/4"



**6503G067**  
Buffet Platter Flat Well 19" x 15 3/4"



**6503G057**  
Buffet Platter Square Well 20 7/8" x 15 3/4"



**6503G062**  
Large Bridge Support 12 1/4" x 7 7/8"  
**6503G063**  
Small Bridge Support 9 7/8" x 4 3/4"



**steelite**  
INTERNATIONAL

[www.steelite.com](http://www.steelite.com)

**United States of America**

Steelite International America  
154 Keystone Drive  
New Castle, Pennsylvania 16105  
toll free: 800 367 3493  
telephone: 724 856 4900  
fax: 724 856 7925  
email: [usa@steelite.com](mailto:usa@steelite.com)  
[www.facebook.com/steelite](http://www.facebook.com/steelite)

**Canada**

Steelite International Canada Ltd  
Unit 2, 26 Riviera Drive  
Markham, Ontario L3R 5M1  
toll free: 800 465 4284  
telephone: 905 752 1074  
fax: 905 752 1120  
email: [canada@steelite.com](mailto:canada@steelite.com)

**United Kingdom [Registered Office]**

Steelite International plc  
Orme Street, Stoke-On-Trent ST6 3RB  
telephone: 011 44 1782 821000  
fax: 011 44 1782 819926  
email: [marketing@steelite.com](mailto:marketing@steelite.com)