

Applicable Models:

K-SOFT PUMP machines

PM Frequency:

Every 12 months

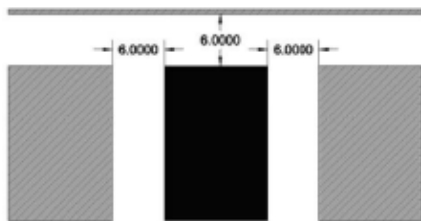
Parts Included:

- Lubricant tube (04.ZZ0597.001)
- Faucet piston O-Rings (04.BA0026.TPS)
- Flange O-Ring (04.KE0005.001)
- Cylinder rotational seal (04.MP0016.001)
- Pump gear pair (04.HU0079.001)
- Pump connection tube (04.ZZ0603.001)
- Pump connection one-way valve (04.HU0069.001)
- All the pump system O-Rings
(see the MK 05.ZZ0132.002 part list)

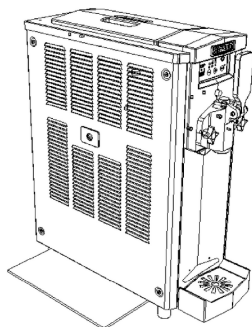
Descriptions and Instructions:

1. Verify unit clearance per diagram
2. Clean the condenser on the machine right side
3. Replace the cylinder rotational seal assembled on the beater shaft (33). Replace faucet piston O-Rings (48) and the flange O-Rings (52)
4. Replace the pump consumable parts (921, 916, 917, 934, 933, 925, 118, 65 and 929)
5. Lubricate as indicated in the Operator's Manual

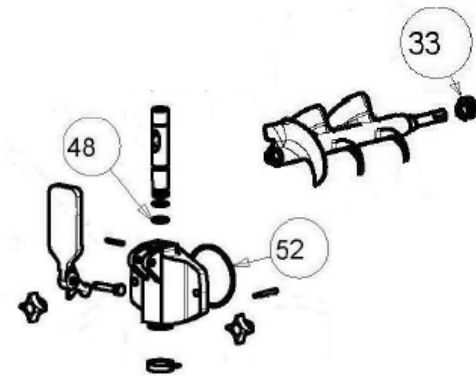
1.



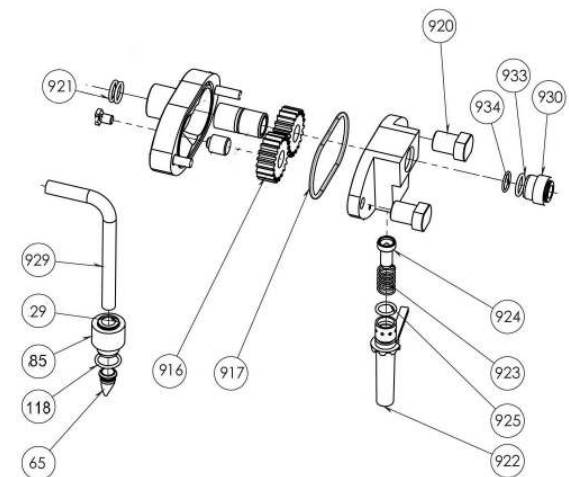
2.



3.



4.



Operator Manuals, including use and care instructions as well as product video tutorials, can be found on our website or by calling Technical Support (select 1 for technical service)

390-00270 rev 2