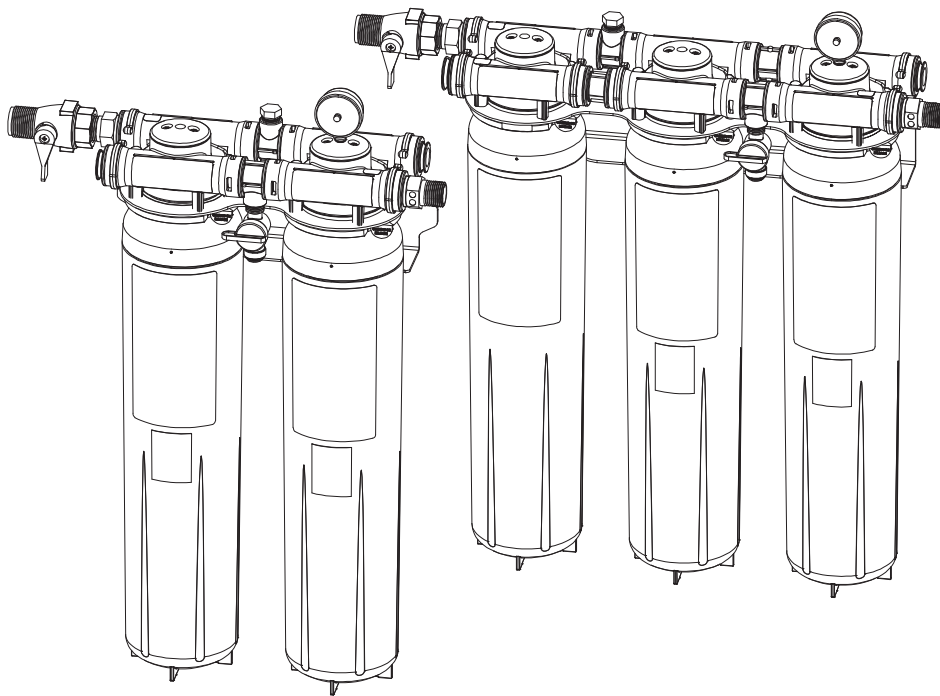


3M™ Water Filtration Products

Dual/Triple Manifold Water Filtration Systems Instruction Manual



High Flow Series Water Filtration Systems

Installer: Please leave this manual with owner/operator.

3M

3M™ Water Filtration Products

Table of Contents


Safety Information	2
Warning Statements	2
Notice/Important Notes.....	3
Inlet and Outlet Connections.....	3
Product Dimensions	4
How to Use “Push-in” Connectors.....	5
How to Use “Inlet/Outlet” Fitting/Retention Clip	5
Equipment Installation	5
Equipment Start-up Procedure	6
Cartridge Change-out Procedure.....	7
Troubleshooting	7
Parts Listing	8
Limited Warranty.....	10


SAFETY INFORMATION

Read, understand, and follow all safety information contained in these instructions prior to installation. Retain these instructions for future reference.

Intended Use:

The Dual/Triple Manifold Water Filtration System is intended for use in filtering potable water and has not been evaluated for other uses. The product is installed at the point of entry (main distribution pipe) and must be installed as specified in the installation instruction by a qualified professional.

EXPLANATION OF SIGNAL WORD CONSEQUENCES	
 WARNING	Indicates a potentially hazardous situation, which, if not avoided, could result in death or serious injury and/or property damage.
NOTICE	Indicates a potentially hazardous situation, which, if not avoided, may result in property damage.

 WARNING	
To reduce the risk associated with choking:	
<ul style="list-style-type: none"> • Do not allow children under 3 years of age to have access to small parts during the installation of this product. 	
To reduce the risk associated with the ingestion of contaminants:	
<ul style="list-style-type: none"> • Do not use with water that is microbiologically unsafe or of unknown quality without adequate disinfection before or after the system. Systems certified for cyst reduction may be used on disinfected water that may contain filterable cysts. EPA Establishment #10350-MN-007. 	
To reduce the risk associated with hazardous voltage due to an installer drilling through existing electric wiring or water pipes in the area of installation:	
<ul style="list-style-type: none"> • Do not install near electric wiring or piping which may be in path of a drilling tool when selecting the position to mount the filter bracket. 	
To reduce the risk of physical injury:	
<ul style="list-style-type: none"> • Depressurize system as shown in manual prior to cartridge removal. 	
To reduce the risk associated with back strain:	
<ul style="list-style-type: none"> • Follow safe lifting procedures. 	

NOTICE

To reduce the risk associated with property damage due to water leakage or flooding:

- **Read and follow** Use Instructions before installation and use of this system.
- Installation and use **MUST** comply with all state and local plumbing codes.
- **Protect from freezing**, remove filter cartridge when temperatures are expected to drop below 40° F (4.4° C).
- **Do not install** systems in areas where ambient temperatures may go above 110° F (43.3° C).
- **Do not install on hot water supply lines.** The maximum operating water temperature of this filter system is 100°F (37.8°C).
- **Do not install** if water pressure exceeds 125 psi (862 kPa). If your water pressure exceeds 80 psi (552 kPa), you must install a pressure limiting valve. Contact a plumbing professional if you are uncertain as to how to check your water pressure.
- **Do not install** where water hammer conditions may occur. If water hammer conditions exist you must install a water hammer arrester. Contact a plumbing professional if you are uncertain how to check for this condition.
- Where a backflow prevention device is installed on a water system, a device for controlling pressure due to thermal expansion must be installed.
- Where a booster pump is installed on a water system, you must maintain and inspect the attached pressure switch regularly in accordance with the booster pump manufacturer's instructions. Contact a plumbing professional if you are uncertain how to maintain your booster pump system.
- Where a booster pump is installed on a water system, you must install an appropriate pressure relief valve. Pressure relief valve must be maintained and inspected every 6 months. Contact a plumbing professional if you are uncertain how select/install/maintain a pressure relief valve.
- Where a booster pump is installed on a water system, you must install an appropriate pressure regulating valve and regulate water pressure to <80psi. Contact a plumbing professional if you are uncertain how select/install/maintain a pressure regulating valve.
- **Do not** use a torch or other high temperature sources near filter system, cartridges, plastic fittings or plastic plumbing.
- On plastic fittings, never use pipe sealant or pipe dope. Use PTFE thread tape **only**, pipe dope properties may deteriorate plastic.
- Take care when using pliers or pipe wrenches to tighten plastic fittings, as damage may occur if overtightening occurs.
- **Do not** install in direct sunlight or outdoors.
- **Do not** install near water pipes which will be in path of a drilling tool when selecting the position to mount the bracket.
- Install system in such a position as to prevent it from being struck by other items used in the area of installation.
- Ensure that the location and fasteners will support the weight of the system when installed.
- Ensure all tubing and fittings are secure and free of leaks.
- **Do not** install unit if collet is missing. Contact 1-866-990-9785 if collets are missing from any fittings.

To reduce the risk of water leakage or flooding, and to ensure optimal filter performance:

- **Change the disposable filter cartridge every 12 months** or sooner if you observe a noticeable reduction in water flow rate.
- Failure to replace the disposable filter cartridge at recommended intervals may lead to reduced filter performance and cracks in the filter housing, causing water leakage or flooding.
- For questions or concerns, please contact Customer Service at 1-866-990-9785.

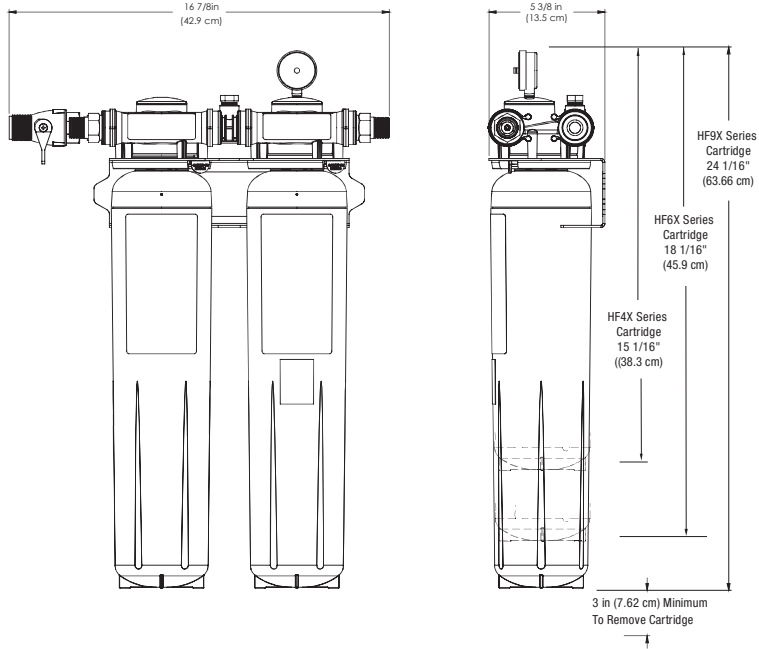
IMPORTANT NOTES

- Failure to follow instructions will void warranty.
- Allow a minimum of 3" (7.6 cm) clear space under filter to facilitate cartridge change.
- Install with the inlet and outlet ports as labeled. Make sure not to reverse connections.
- Some local codes may require the use of a licensed plumber or certified installer when disrupting a potable water line.

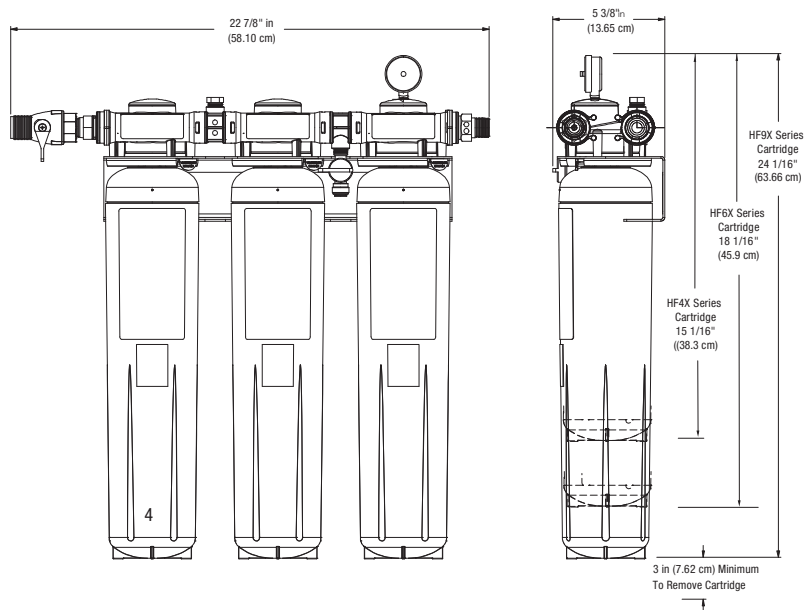
Inlet and Outlet Connections

The water inlet is on the left side rear and the outlet is on the right side front and are identified with labels. The fitting size is 3/4" NPT (Male). A built-in check valve (non-return) is incorporated into the outlet.

**Dual Manifold Filtration System
Product Dimensions**



**Triple Manifold Filtration System
Product Dimensions**

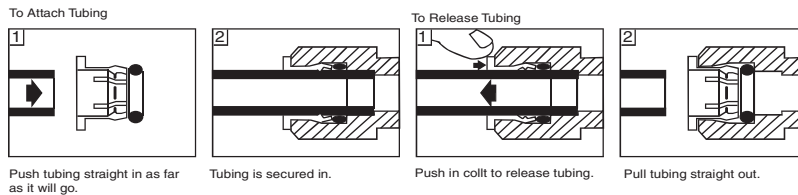


How to Use "Push-in" Connectors

This product is outfitted with a user friendly 'Push In' connector at the vent valve. Proper use of the connectors is shown in the figure below. It is most important that the tubing selected for use with these connectors be of high quality, exact size and roundness, and with no surface nicks or scratches. If it is necessary to cut the tubing, use a plastic tubing cutter or sharp razor knife. Make a clean square cut. Should a leak occur at a "Push-In" connector, the cause is usually a problem with tubing.

To Fix:

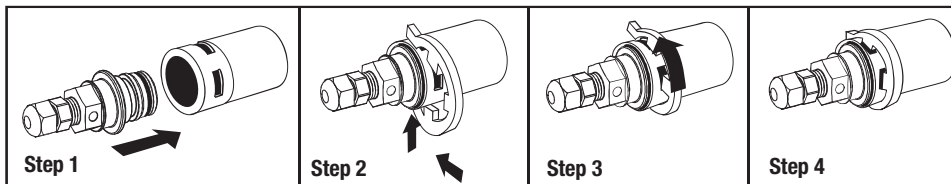
1. Relieve pressure
2. Release tubing
3. Cut off at least 1/4" from end
4. Reattach tubing
5. Confirm connection is leak free



How to Use the Inlet/Outlet Fitting and Retention Clips

This product is outfitted with inlet/outlet fittings. The fittings can be attached or removed from the system without tools. Retention clips are semi-circular in shape with three internal tabs, bottom, center and top. Tab interfaces with windows in the manifold head near each connection port clip is flexible and easily assembled following these instruction and illustrations.

1. Insert fitting into manifold.
2. With fitting inserted into manifold port, snap clip into place beginning at the bottom window
3. Push center tab into center window.
4. Finally push top tab into top window.



Equipment Installation

NOTICE

To reduce the risk associated with property damage due to water leakage or flooding:

- **Do not** use a torch or other high temperature sources near filter system, cartridges, plastic fittings or plastic plumbing.
- On plastic fittings, never use pipe sealant or pipe dope. Use PTFE thread tape **only**, pipe dope properties may deteriorate plastic.
- Take care when using pliers or pipe wrenches to tighten plastic fittings, as damage may occur if overtightening occurs.
- **Do not** install near water pipes which will be in path of a drilling tool when selecting the position to mount the system
- Mount filter in such a position as to prevent it from being struck by other items used in the area of installation.
- Ensure that the location and fasteners will support the weight of the system when installed.
- Ensure **all** tubing and fittings are secure and free of leaks.

IMPORTANT NOTES

- Failure to follow instructions will void warranty.
- Allow a minimum of 3" (7.6 cm) clear space under filter to facilitate cartridge change.
- Install with the inlet and outlet ports as labeled. Make sure not to reverse connections.
- Some local codes may require the use of a licensed plumber or certified installer when disrupting a potable water line.

Both manifolds may be used with metal or non-metallic piping systems.

IMPORTANT NOTE: Any non-metallic fittings used in the installations must be of adequate rating for the line pressure.

1. Shut off incoming cold water supply.
2. Select the installation location.

▲ WARNING: Allow a minimum of 3 in (7.6 cm) of space below the cartridges for change-outs.

3. Select fasteners (not included) and tools appropriate for the installation location (wall, support structure mounted to wall studs, concrete, etc.)

NOTICE

To reduce the risk associated with property damage due to water leakage or flooding:

- Ensure that the location and fasteners will support the weight of the system when installed when full of water.

4. Mount the manifold/filter system to a wall or using the mounting holes provided on the back plate of the metal bracket.
 - It is recommended to first draw a level line on the mounting surface at the height of the fasteners.
 - Mark the location of the fasteners using the bracket as a template or by measuring the distance between the mounting holes.
 - Install the fasteners and allow $\frac{1}{4}$ "- $\frac{3}{8}$ " (6-10 mm) of each fastener to protrude from the surface.
 - Install the manifold onto the fasteners.
 - Tighten the fasteners.
5. Install inlet (left rear) and outlet (right front) fittings to the manifold. The inlet kit includes the fitting, a ball valve and a $\frac{3}{4}$ " nipple. The outlet is a fitting only. The instructions for the retention clips are on page 4.
6. Remove the sanitary caps from the cartridges, and apply a light coat of water or food-grade lubricant to the o-rings on each of the cartridges.
7. One at a time, align the tabs of the cartridge with the slots in the retaining plate and insert the cartridge into the manifold. Be certain to place the correct cartridges into the correct locations.
8. Turn the cartridge to the right until a clicking sound is heard. Repeat for all cartridges; the clicking sound indicates the cartridge is properly engaged.

Equipment Start-up Procedure

1. Turn on incoming water to system.
2. Pressurize system by slowly rotating the inlet water ball valve $\frac{1}{4}$ turn to the left (counterclockwise) to the "ON" position.
3. Check for leaks.
4. Use vent to remove trapped air.
5. Flush system in accordance with performance data sheet supplied with the cartridges.
6. System is now ready for use.

Cartridge Change-out Procedure

NOTICE

To reduce the risk associated with property damage due to water leakage or flooding:

- **To reduce the risk of water leakage or flooding, and to ensure optimal filter performance: Read and follow Use instructions before installation and use of this system. Change the disposable filter cartridge every six months** or sooner if you observe a noticeable reduction in water flow rate. Failure to replace the disposable filter cartridge at recommended intervals may lead to reduced filter performance and cracks in the filter housing, causing water leakage or flooding.

Cartridges will need to be changed every 12 months or when low pressure is indicated on the manifold outlet pressure gauge, whichever occurs first. Depending on local water quality, you may need to change the cartridges prior to the recommended change-out. The loss of flow to carbonators or improper fill at the ice maker are also indicators that the cartridges will need to be replaced

1. Rotate inlet water shut-off valve on manifold to the "OFF" position by rotating to the left (counterclockwise).
2. Install plastic tubing into vent valve on manifold and direct to drain.
3. Depressurize system.
4. Push tab to release cartridge locking mechanism while simultaneously rotating cartridge slightly to the left
5. Using both hands and holding cartridge from the bottom, rotate the cartridge a quarter turn to the left and gently pull down.
NOTICE: A small amount of water will drain from manifold as cartridge is removed.
6. Remove sanitary cap from new cartridge. Install cartridge with a quarter turn to the right until cartridge comes to a complete stop.
IMPORTANT NOTE: Cartridges are keyed to fit proper location only.
7. Slowly turn the valve on the manifold to the "ON" position and check for leaks.
8. Flush per the performance data sheet. System is now ready for use.

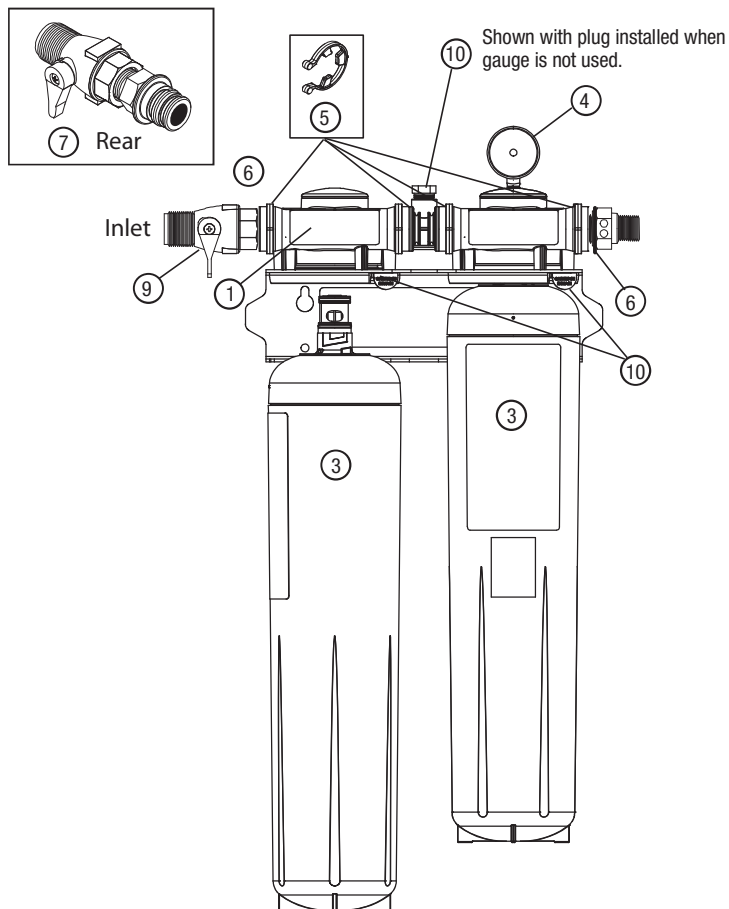
Troubleshooting

No water flow through system	Inlet valve closed Filters clogged	Check shut-off valve position Replace cartridges
Not enough water to downstream application	Low incoming water pressure Filters clogged	Check source Replace cartridges
Short filter life	Temporarily dirty water	Change cartridges or install an additional upstream Pre-Filter

Double Manifold Replacement Parts Listing

Item	Part no.	Description	Qty*	Micron Rating
1	6228405	Dual Manifold Assembly	1	Assembly, complete
2	60-2333700	Vent Valve (not shown)	1	Release trapped air
3	See catalog	Replacement Cartridges	1	Water filtration
4	85005-49	Pressure gauge	1	Monitor outlet water pressure
5	85-8528	Clip	1	Retain inlet/outlet fittings
6	63597320	o-ring	1	Seal inlet/outlet fittings
7	6220505	Inlet fitting kit	1	Inlet fitting with ball valve
8	6220506	Outlet fitting kit	2	Outlet fitting
9	60-235380	3/4" x 3/4" ball valve	1	Inlet water shut-off
10	85005-49	Pressure Gauge (optional)	1	Monitor inlet water pressure
11	Inquire	Retainer Kit	1	Secure Cartridges

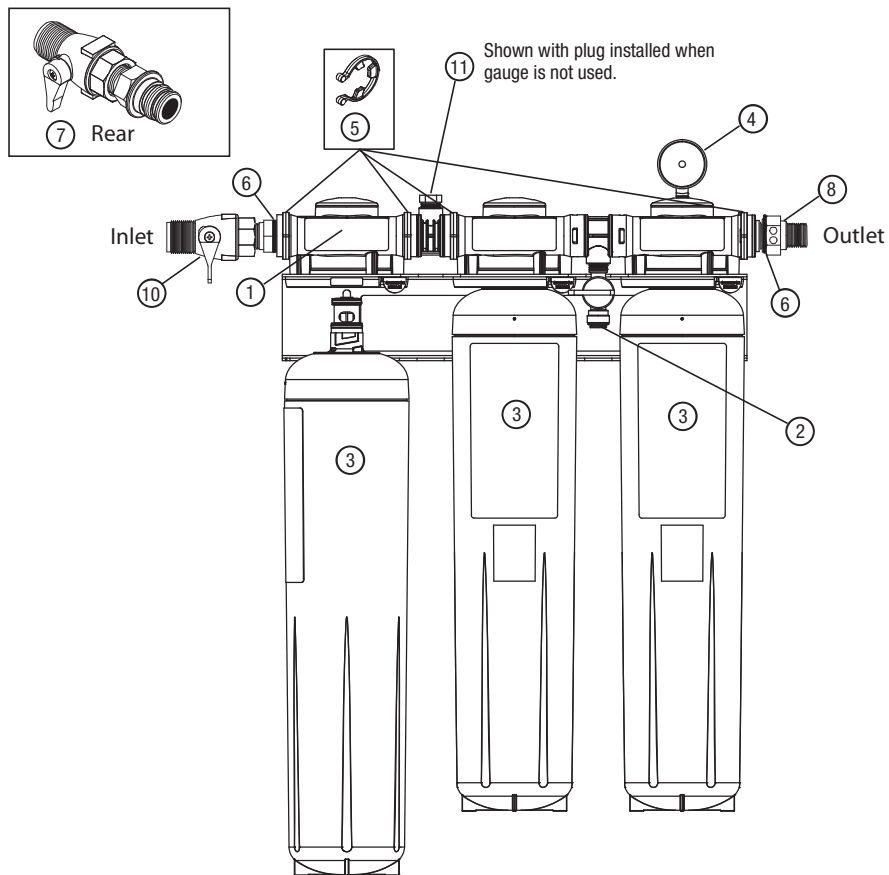
*Per part number, not per system or assembly.



Triple Manifold Replacement Parts Listing

Item	Part no.	Description	Qty*	Micron Rating
1	6228405	Triple Manifold Assembly	1	Assembly, complete
2	60-2333700	Vent Valve	1	Release trapped air
3	See catalog	Replacement Cartridges	1	Water filtration
4	85005-49	Pressure gauge	1	Monitor outlet water pressure
5	85-8528	Clip	1	Retain inlet/outlet fittings
6	63597320	o-ring	1	Seal inlet/outlet fittings
7	6220505	Inlet fitting kit –left rear	1	Inlet fitting with ball valve
9	6220507	Outlet fitting kit – right front	1	outlet fitting
10	60-235380	Pressure Gauge (optional)	1	Inlet water shut-off
11	85005-49	Pressure gauge (Optional)	1	Monitor inlet water pressure
12	Inquire	Retainer Kit	1	Secure cartridges

*Per part number, not per system or assembly.



Limited Warranty

Product Use:

Many factors beyond 3M's control and uniquely within user's knowledge and control can affect the use and performance of a 3M product in a particular application. Given the variety of factors that can affect the use and performance of a 3M product, user is solely responsible for evaluating the 3M product and determining whether it is fit for a particular purpose and suitable for user's method of application.

Warranty, Limited Remedy, and Disclaimer:

3M warrants that this product (excluding filter cartridge or filter membrane) will be free from defects in material and manufacture for the period of one (1) year(s) from the date of purchase. The filter cartridge or membrane is warranted to be free from defects in material and manufacture for one (1) year. No warranty is given as to the service life of any filter cartridge or membrane as it will vary with local water conditions and water consumption. 3M MAKES NO OTHER WARRANTIES OR CONDITIONS, EXPRESS OR IMPLIED, INCLUDING, BUT NOT LIMITED TO, ANY IMPLIED WARRANTY OR CONDITION OF MERCHANTABILITY OR FITNESS FOR A PARTICULAR PURPOSE OR ANY IMPLIED WARRANTY OR CONDITION ARISING OUT OF A COURSE OF DEALING, CUSTOM OR USAGE OF TRADE. This warranty does not cover labor. If the 3M product does not conform to this warranty, then the sole and exclusive remedy is, at 3M's option, replacement of the 3M product or refund of the purchase price.

This warranty gives you specific legal rights, and you may have other rights which may vary from state to state, or country to country. For any warranty questions, please call 866.990.9785 or mail your request to: Warranty Claims, 3M Purification Inc., 400 Research Parkway, Meriden, CT 06450. Proof of purchase (original sales receipt) must accompany the warranty claim, along with a complete description of the Product, model number and alleged defect.

Limitation of Liability:

Except where prohibited by law, 3M will not be liable for any loss or damage arising from the 3M product, whether direct, indirect, special, incidental or consequential, regardless of the legal theory asserted, including warranty, contract, negligence or strict liability.

NOTES

3M is a trademark of 3M Company.
© 2014 3M Company. All rights reserved.
34-8715-0095-4
Please Recycle. Printed in U.S.A.



3M Purification Inc.
400 Research Parkway
Meriden, CT 06450, USA
Toll Free: 866.990.9785
Worldwide: 203.237.5541
Fax: 203.238.8701
www.3Mfoodservice.com
www.3Mpurification.com