

ECTRS-16 WITH SD-30 STAND

 ECTRS-16 with SD-30 Stand


STANDARD CONSTRUCTION SPECIFICATIONS

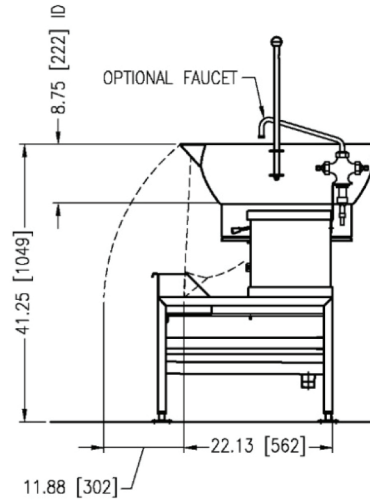
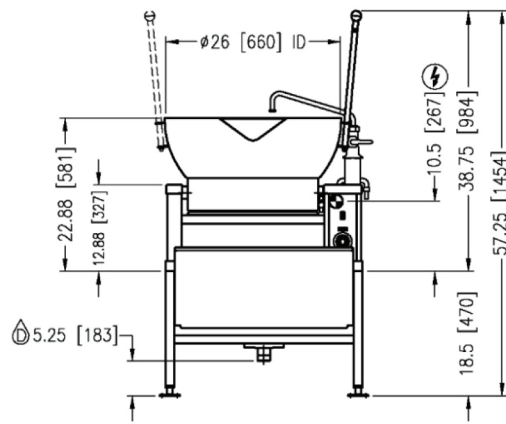
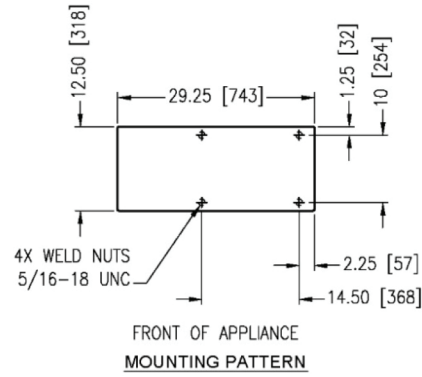
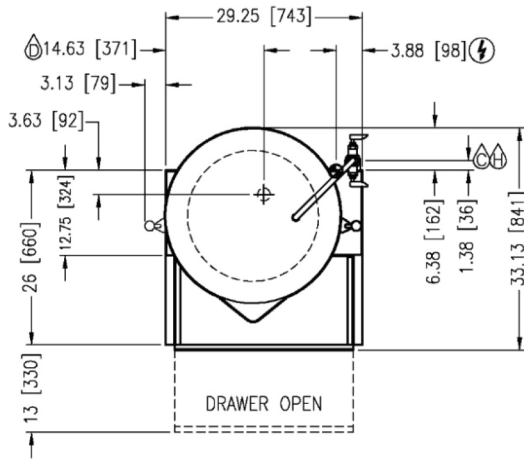
Crown model ECTRS-16 skillet with optional SD-30-16 open type equipment stand with drawer.

All stainless steel construction 1-1/4" square tubular frame with four (4) adjustable flanged feet to floor anchor and removable drain drawer with roller action slides, high front splash shield, removable splash diffusing drawer bottom for added splash control and stationary drain connection.

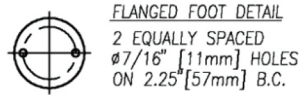


Approval Notes: _____

DIMENSIONS ARE IN INCHES [MM]



SHOWN WITH OPTIONAL SD-30-16 STAND & DF-12 FAUCET.



IN [mm]

3160R6

SERVICE CONNECTIONS

- ELECTRICAL CONNECTION to be as specified on data plate
- DRAIN: 1-1/2" -11-1/2" NPT
- COLD WATER: Compression fittings for 5/8" O.D. copper tubing or 1/2 NPSM Male
- HOT WATER: Compression fittings for 5/8" O.D. copper tubing or 1/2 NPSM Male

ELECTRICAL CHARACTERISTICS

MODEL	KW	PHASE	AMPS PER LINE							SHIPPING WEIGHT	Minimum Clearance	
			208V	220V	240V	380V	415V	480V	600V		SIDES	0
ECTRS-16	7.5	1	36.0	34.1	31.3	N/A	N/A	N/A	N/A	220 lbs. [100 kg]	SIDES	0
		3	20.8	19.7	18.1	11.4	10.4	9.0	7.2		BACK	0

**INTENDED FOR COMMERCIAL USE ONLY.
NOT FOR HOUSEHOLD USE.**

