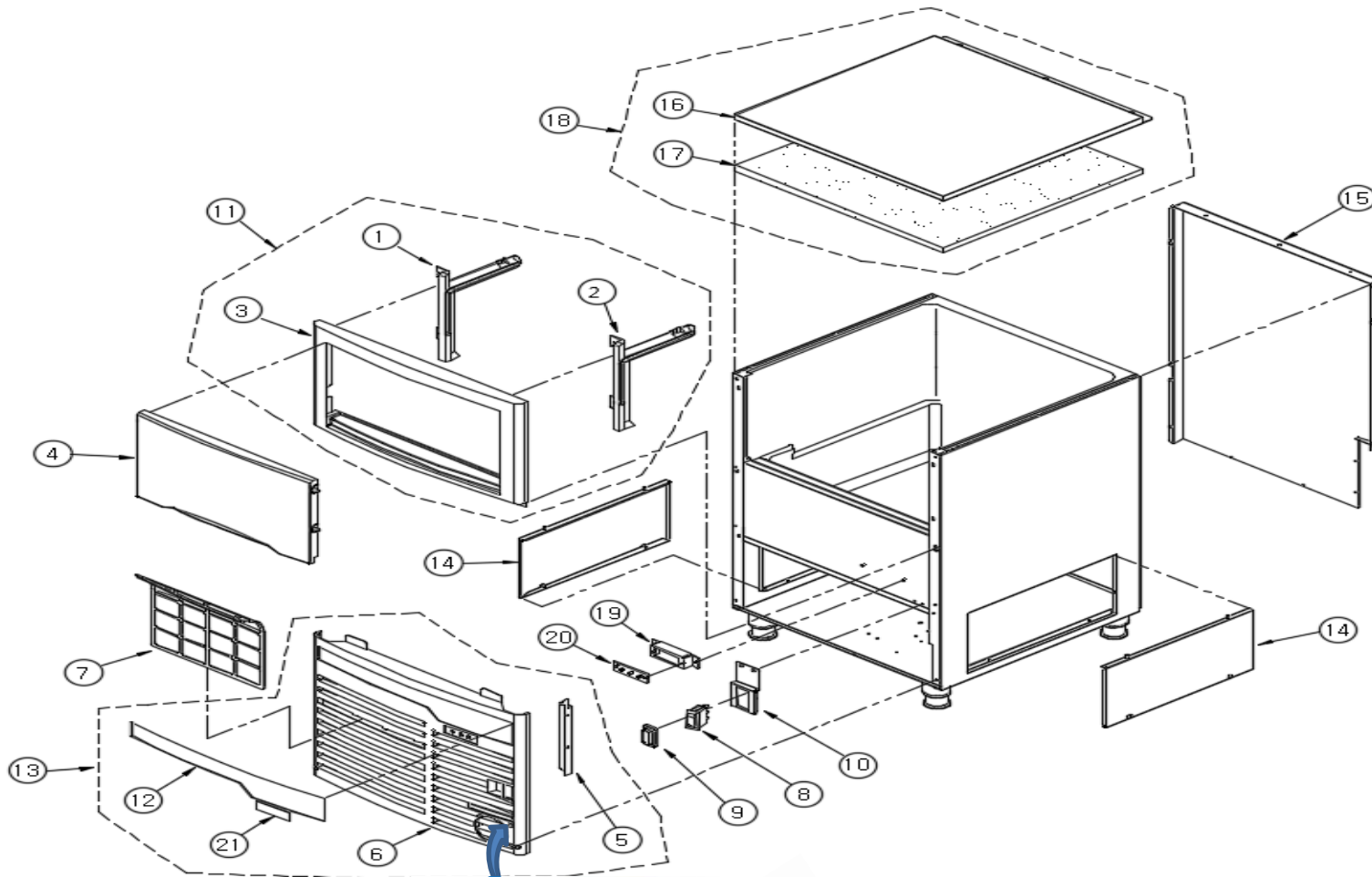


Revised 09/02/2020

# WU-0100-AC



**FWU-0100R**  
 Built in Carbon Block Water Filter  
 (One unit is included when you buy a new machine)

| NO | ITEMS  | CODE      |
|----|--|-----------|
| 1  | DOOR FRAME GUIDE L   | 391011201 |
| 2  | DOOR FRAME GUIDE R   | 391011301 |
| 3  | DOOR FRAME   | 391011100 |
| 4  | BIN DOOR ASSEMBLY  | 447007500 |
| 5  | BRACKET AIR FILTER GUIDE   | 301077800 |
| 6  | FRONT PANEL  | 349064301 |
| 7  | AIR FILTER   | 640005000 |
| 8  | S/W-3L   | 355009800 |
| 9  | COVER S/W  | 355008900 |
| 10 | BRACKET MAIN SWITCH  | 443043400 |
| 11 | DOOR FRAME ASSEMBLY  | 447007600 |
| 12 | LABEL BRAND  | 380080300 |
| 13 | ASSY FRONT PANEL SUB   | 432046900 |
| 14 | OUT CASE SIDE COVER  | 301075200 |
| 15 | BACK PANEL   | 301082204 |
| 16 | TOP COVER  | 301081700 |
| 17 | FOAM PE  | 306021900 |
| 18 | ASSY TOP COVER   | 442007900 |
| 19 | BRACKET LED LAMP   | 301110000 |
| 20 | DISPLAY PCB ASSY   | 415001200 |
| 21 | LABEL DISPLAY  | 380097700 |
| 22 | CARBON BLOCK FILTER  | 640005200 |
|    | <p><i>A filter is required for this machine to operate. If your machine stops producing ice, it is likely time to replace this filter. It is recommended that you replace the filter every 6 months, or more often depending on the quality of your water.</i></p> |           |











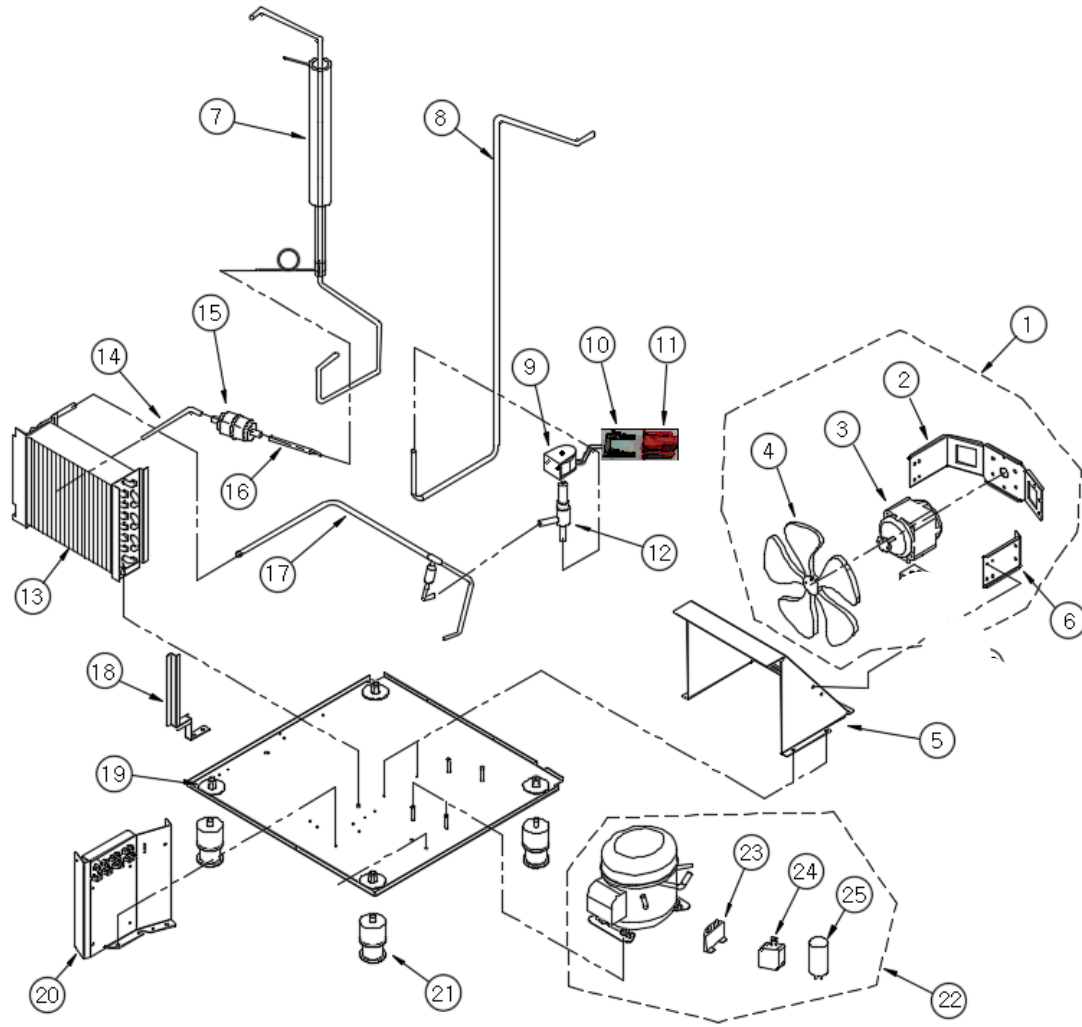
Revised 09/02/2020

# WU-0100-AC

\* Manufactured before January 2018

\*\* Manufactured after January 2018

## [ CYCLE BASE ASSY ]



| NO | ITEMS                   | * CODE    | NO | ITEMS               | ** CODE   |
|----|-------------------------|-----------|----|---------------------|-----------|
| 1  | ASSY FAN MOTOR          | 406012700 | 1  | ASSY FAN MOTOR      | 406012710 |
| 2  | BRACKET MOUMT MOTOR ONE | 301079300 |    |                     |           |
| 3  | FAN MOTOR               | 353021600 | 3  | FAN MOTOR           | 353025900 |
| 4  | FAN                     | 308003800 | 4  | FAN                 | 308003700 |
| 5  | BRACKET COND SHROUD     | 301101100 |    |                     |           |
| 6  | BRACKET MOUNT MOTOR TWO | 301079400 |    |                     |           |
| 7  | SUCTION ASS'Y           | 433015101 | 7  | SUCTION ASS'Y       | 433015110 |
| 8  | HOT GAS PIPE            | 325069101 | 8  | HOT GAS PIPE        | 325069110 |
| 9  | SOLENOID VALVE COIL     | 340026900 |    |                     |           |
| 10 | TERMINAL                | 371000200 |    |                     |           |
| 11 | HOUSING                 | 370001600 |    |                     |           |
| 12 | SOLENOID VALVE BODY     | 340026800 |    |                     |           |
| 13 | CONDENSER ASS'Y         | 411010600 | 13 | CONDENSER ASS'Y     | 411010300 |
| 14 | CONDENSER OUT PIPE      | 325069200 | 14 | COND TO DRIER       | 325141700 |
| 15 | FILTER DRYER            | 372001600 |    |                     |           |
| 16 | DISTRIBUTE SUCTION      | 335000301 | 16 | DRIER TO CAPILLARY  | 325141800 |
| 17 | DISCHARGE PIPE          | 325069000 | 17 | DISCHARGE PIPE      | 325069010 |
| 18 | BRACKET AIR FILTER      | 301077400 |    |                     |           |
| 19 | BASE PLATE ASSEMBLY     | 412035900 | 19 | BASE PLATE ASSEMBLY | 412035910 |
| 20 | CONTROL BOX ASS'Y       | 426041800 |    |                     |           |
| 21 | LEVELLING FOOT          | 302002300 |    |                     |           |
| 22 | COMPRESSOR              | 394009800 | 22 | COMPRESSOR          | 394022200 |
| 23 | PTC-RELAY               | 357010100 | 23 | Including COMP      | -         |
| 24 | OLP                     | 658004300 | 24 | Including COMP      | -         |
| 25 | START CAPACITOR         | 659008100 | 25 | Including COMP      | -         |
|    |                         |           | 26 | BRACKET EURO MOTOR  | 301131100 |