

# ELEVATE Your Expectations

Camshelving® Elevation Series Wall Shelving



**CAMBRO**  
TRUSTED DURABILITY

[www.cambro.com](http://www.cambro.com)



It's not just wall shelving.  
It's **Camshelving**®

Cambro® has provided operators the most hygienic and durable commercial foodservice shelving since 1999. Over the last 25 years, Camshelving has proved it can handle cold, moisture, acidic ingredients, humidity, and constant cleaning in kitchens around the world. Designed to maximize even the smallest spaces, Camshelving has allowed operators to use every inch of their floor space to the best of its ability.

Now, there's nowhere to go but **Up**.

Camshelving Elevation Series Wall Shelving combines highly durable plastic components with Type 304 Stainless Steel accessories to help operators create wall storage like never before.



# You're Invited to Upgrade . . .



to Camshelving® Elevation Series Wall Shelving, a new vertical storage system that will never rust, corrode, peel or dent, as long as you're in business. Choose from standard kits or customize your space with individual components and accessories to fit your needs. Camshelving Elevation Series Wall Shelving is designed with modular shelving components to allow your wall shelving to continuously adapt to changing demands.

Extremely Easy to Clean

Ultra Hygienic

No Rust or Flaking EVER

Unmatched Durability

## Say Goodbye to THIS . . . **FOREVER**

Wire wall shelving rusts under pressure and in wet environments. Inevitably, it is either thrown out into landfills or left on the wall as a breeding ground for bacteria.

Elevation Series Wall Shelving has a lifetime warranty against rust & corrosion. Never worry about replacement costs or deterioration again!

Now when you choose Camshelving for your wall space, you can choose **SHELVING for LIFE®**



Difficult to Clean  
& Keep Clean

Epoxy Coatings  
Flake & Peel

Rust Equals  
Replacement



# Unparalleled DESIGN & PER

## WALL TRACK

- Non-Corrosive Aluminum
- Drain Holes for Cleaning
- Available in 40" or 56" Lengths

## UNIVERSAL SHELF BRACKETS

- Included with Shelf Kits and Drying Rack Kits
- Hold Single (shown here) or Shared/Side by Side Shelves (shown on page 9)
- Combine with Open Shelf Frames to Create Custom Storage Sections
- Available in 14", 18", 21" and 24" Depths

## WALL UPRIGHTS

- Heavy-Duty Reinforced Nylon
- Molded-in Upright Hooks
- Available in 15", 30" and 45" Lengths

## PEGBOARDS

- Hanging or Wall Mounted
- Extremely Durable ABS Plastic
- Will Never Bend or Dent



Assembly  
Videos

SCAN HERE  
to WATCH



# FORMANCE



## SHELF KITS

- Vented or Solid, Starter or Add-on
- Unique Composite and Plastic Frame
- Shelf Plates with Molded-in Antimicrobial
- Available in 24", 30", 36", 42" or 48" Lengths

## PEGBOARD ACCESSORIES

- Type 304 Stainless Steel
- Unique Double-Locking Installation
- Superior Stability and Weight-Bearing

## WEIGHT-BEARING CAPACITY\*

Station Kits, Custom Storage, Shelves & Pegboards	Weight-Bearing
All Station Kits or Single Custom Storage Section with Wall Track, 2 Uprights, 2 Shelf Brackets and any Combination of Shelves, Pegboards and Accessories	400 lbs. (181 kg) Per Kit/Section
All Add-On Station Kits or Shared Custom Storage Section with Wall Track, 1 Upright, 1 Shelf Bracket and Any Combination of Shelves, Pegboards and Accessories	200 lbs. (90 kg) Per Kit/Section
Shelf Only, Single Kit with 2 Shelf Brackets	250 lbs. (113 kg) Per Shelf
Shelf Only, Add-On Kit with 1 Shelf Bracket	150 lbs. (68 kg) Per Shared Shelf
Pegboard (Hanging or Wall-Mounted)	100 lbs. (45 kg)

\*Weight bearing capacities based on following cautionary recommendations on inside back page and installation by professional installation company or qualified maintenance/engineering personnel.



# Customize

Your Space

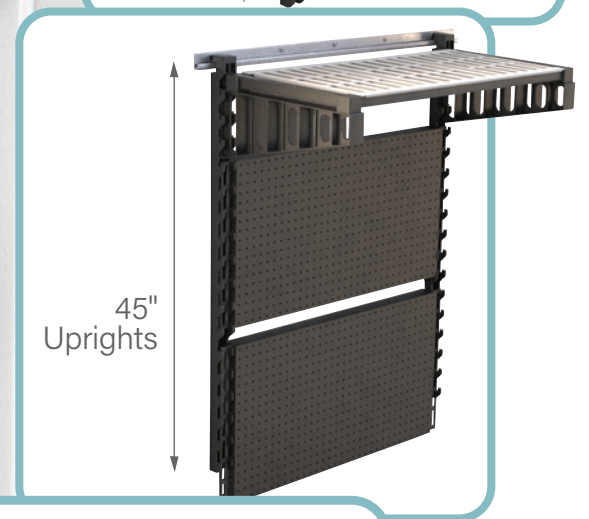
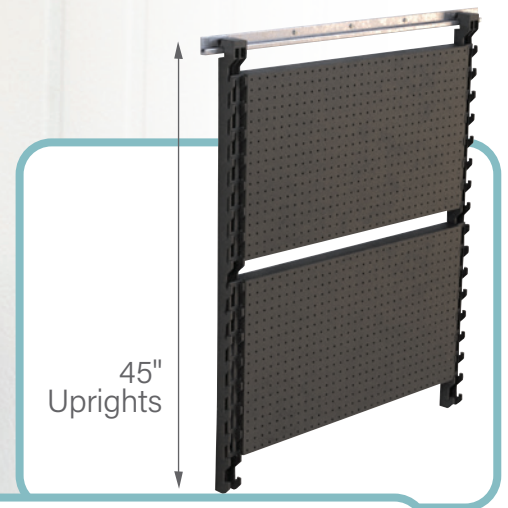
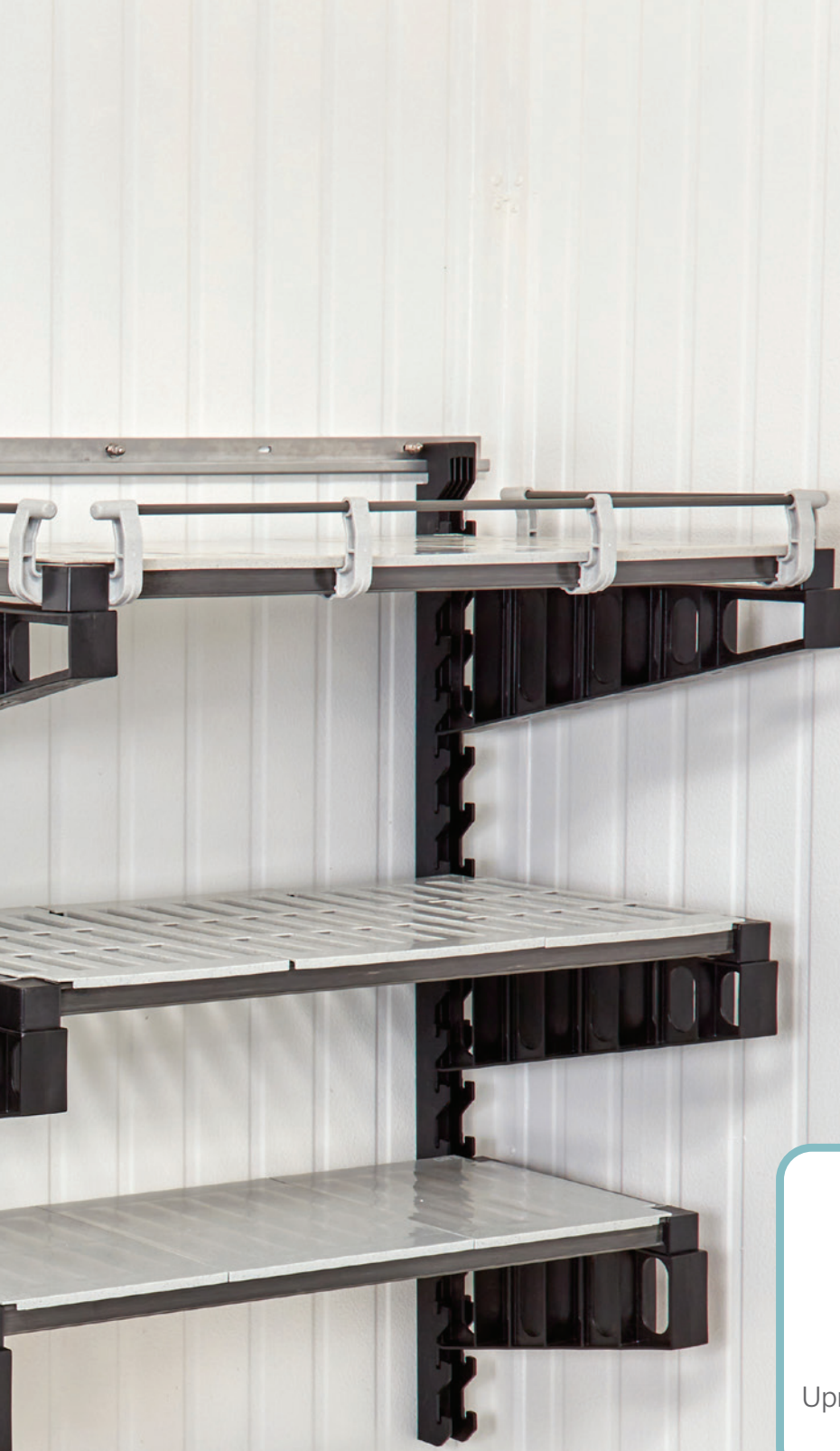
## Wall Storage, YOUR Way.

**Look UP!** Wall Storage Spaces Are Everywhere...

- Over Sinks and Tables
- Above Production/Prep Areas
- Combo Work/Desk Stations
- Storage Above Equipment
- High-up EXTRA Storage
- Pick Up/To Go Stations



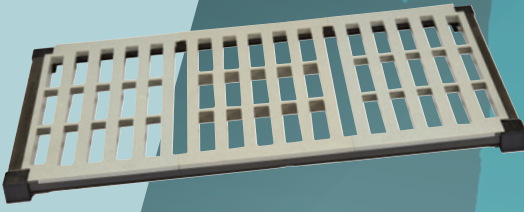
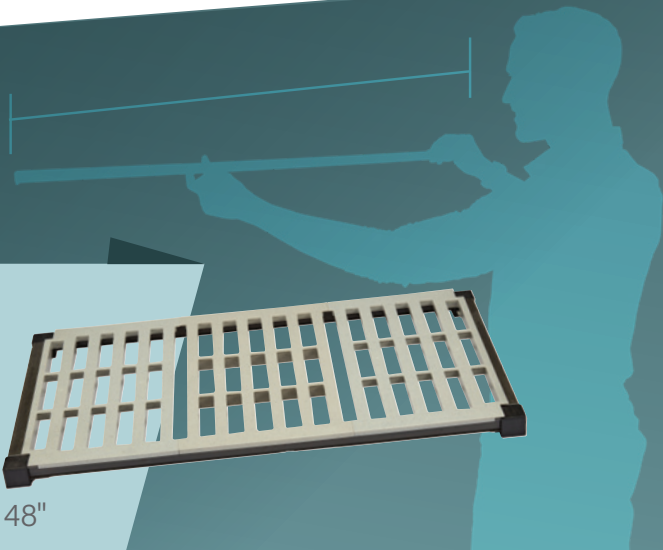




**It's SIMPLE.**  
If you know the maximum length & height of open space available for wall storage and what you want to store, you've got what you need to create wall storage your way.

# THE BUILDING BLOCKS

## LENGTH



**SHELF KITS** | 4 Depths – 14" 18" 21" 24"  
5 Lengths – 24" 30" 36" 42" 48"

**DRYING RACK SHELF KITS** | 1 Depth – 18"  
2 Lengths – 36" and 48"  
36" – 20 drying slots  
48" – 28 drying slots



**OPEN SHELF FRAMES** | 4 Depths – 14" 18" 21" 24"  
2 Lengths – 36" and 48"



**+ SHELF BRACKETS**

Install with open frames to create flat or angled custom task/prep stations when combined with divider bars and food pans.  
4 Depths – 14" 18" 21" 24" (Straight or Angled)

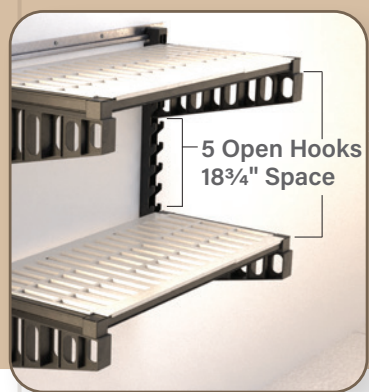
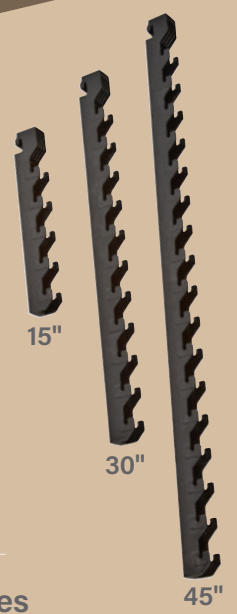


### WALL UPRIGHTS

- Shelves and frames require 3 hooks for installation on wall uprights
- At least 1 open hook required between shelves
- No open hooks required between a shelf and hanging pegboard

### MAXIMUM Number of Shelves PER Wall Upright (Based on 8 3/4" open space between shelves)

15" – 1 shelf only	5 hooks
30" – up to 3 shelves	11 hooks
45" – up to 4 shelves	17 hooks



### OPEN Storage Space Between Shelves

1 open hook – 8 3/4"	4 open hooks – 16 1/4"
2 open hooks – 11 1/4"	5 open hooks – 18 3/4"
3 open hooks – 13 3/4"	

## HEIGHT





## PEGBOARDS



HANGING

WALL-MOUNTED  
(includes hardware)

### HANGING (One Size)

Horizontal - installs on wall uprights

Shelf Length	Pegboard Dims H x L
36"	18" x 36"

### WALL-MOUNTED (Various Sizes)

Horizontal - centered between wall uprights

Shelf Length	Pegboard Dims H x L
30"	18" x 24"
36"	18" x 30" or 24" x 30"
42"	18" x 36" or 24" x 36" or 30" x 36"
48"	18" x 42" or 30" x 36"

Vertical - centered between wall uprights

Shelf Length	Pegboard Dims H x W
24"	24" x 18", 30" x 18"
36"	48" x 30"
42"	48" x 18" (2 installed side by side)

## Wall Storage DESIGN Made EASY

- FREE On-Site Consultation and Professional Design
- 3D and 2D Design + Proposal
- Contact Your Local Cambro Representative to Get Started

**NOTE:** Shelf Brackets and Hanging Pegboards cannot be installed right next to each other, side by side, on the same shared wall upright.

**SHELF TIP:** Shelf depths depend on the location of the shelf. Deeper shelves work best installed up high for light duty storage like paper products or infrequently used kitchen supplies or equipment. Narrow shelves are best directly above worktables, so workspaces are open and unobstructed.

# Complete Wall

Choose from 3 Starter and 3 Add-On Kits with everything you need to fill an empty wall with sections of useful, organized vertical storage above the sinks, prep tables or task stations. Each kit ships in 1 box.

## SINK STATION Starter Kit

CODE - EWS36SINK

18" x 36" x 30¼"

### Kit Includes:

- 1 each 40" Aluminum Wall Track
- 2 each 30" Wall Uprights
- 1 each 18" x 36" Vented Shelf Kit
- 1 each 18" x 36" Hanging Pegboard
- Type 304 Stainless Steel Accessories:
  - 1 each Large Wire Basket
  - 1 each Small Shelf/Lid Holder
  - 1 each Cylinder and Holder
  - 8 each 6" Peg Hooks



## ADD-ON KIT

CODE - EWSA36SINK

18" x 36" x 30¼"

### Kit Includes:

- 1 each 40" Aluminum Wall Track
- 1 each 30" Wall Upright
- 1 each 18" x 36" Vented Shelf Add-On Kit
- 1 each 18" x 36" Hanging Pegboard
- Type 304 Stainless Steel Accessories:
  - Same as Starter Kit





# Storage KITS

## PREP STATION Starter Kit

CODE - EWS36PREP

18" x 36" x 30¼"

### Kit Includes:

- 1 each 40" Aluminum Wall Track
- 2 each 30" Wall Uprights
- 1 each 18" x 36" Vented Shelf Kit
- 1 each 18" x 36" Hanging Pegboard
- Type 304 Stainless Steel Accessories
  - 2 each Large Wire Baskets
  - 1 each Small Shelf/Lid Holder
  - 1 each Cylinder and Holder
  - 8 each 6" Peg Hooks



## ADD-ON KIT

CODE - EWSA36PREP

18" x 36" x 30¼"

### Kit Includes:

- 1 each 40" Aluminum Wall Track
- 1 each 30" Wall Upright
- 1 each 18" x 36" Vented Shelf Add-On Kit
- 1 each 18" x 36" Hanging Pegboard
- Type 304 Stainless Steel Accessories
  - Same as Starter Kit



# TASK STATION

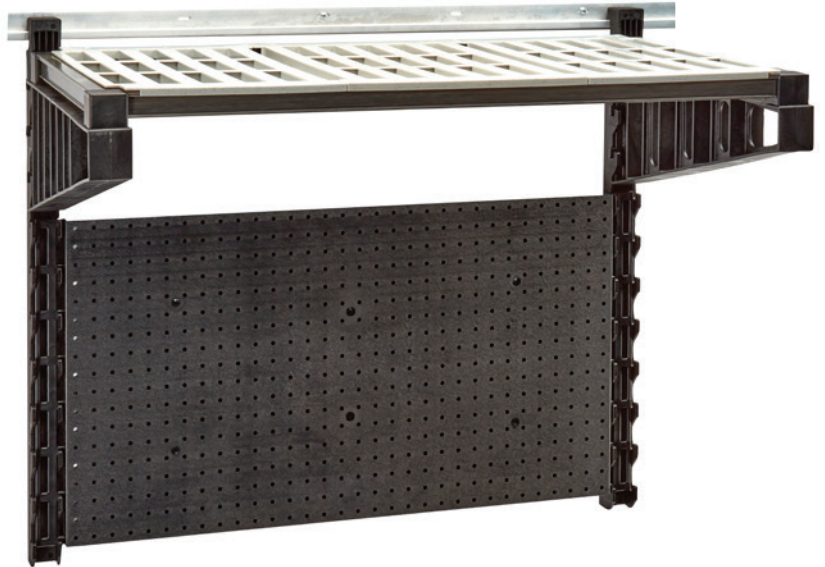
## Starter Kit

CODE - EWS36TASK

18" x 36" x 30¼"

### Kit Includes:

- 1 each 40" Aluminum Wall Track
- 2 each 30" Wall Uprights
- 1 each 18" x 36" Vented Shelf Kit
- 1 each 18" x 36" Hanging Pegboard



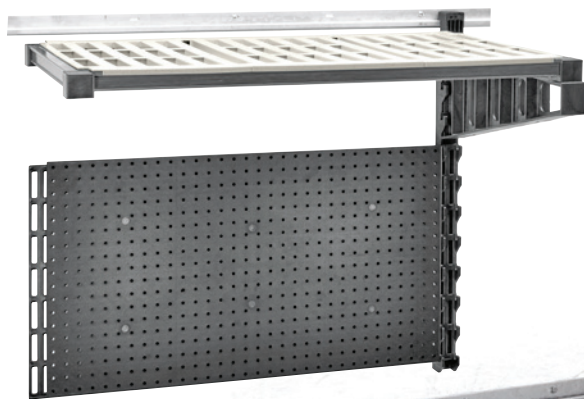
# ADD-ON KIT

CODE - EWSA36TASK

18" x 36" x 30¼"

### Kit Includes:

- 1 each 40" Aluminum Wall Track
- 1 each 30" Wall Upright
- 1 each 18" x 36" Vented Shelf Add-On Kit
- 1 each 18" x 36" Hanging Pegboard



72"  
OVERALL  
LENGTH

Starter Kit + Add-on Kit  
(80" Overall Wall Track Length - 2 each 40" Tracks)



# Standard Station Kits

- Everything ships in 1 box for basic storage needs.
- Dimensions for all kits (D x W x H installed as shown):  
18" x 36" (shelf length only) x 30¼".  
Overall length with Wall Track is 40".

## Starter Kits

**Include:**

1 40" Wall Track, 2 Wall Uprights, 1 Vented Shelf, 1 Hanging Pegboard, Accessories\*

CODE	DESCRIPTION	LIST PRICE EA.
EWS36SINK	SINK KIT	\$ 1020.00
EWS36PREP	PREP KIT	1,145.00
EWS36TASK	TASK KIT	625.00

Case Pack: 1 each    Color: Black (110).



Sink Station Starter Kit

## Add-on Kits

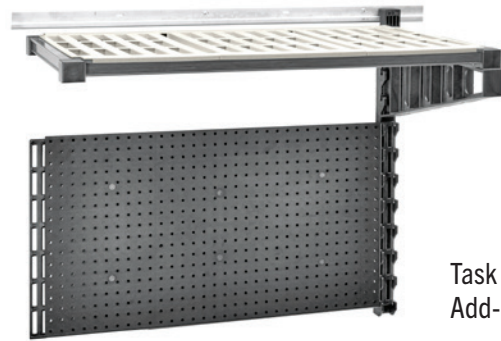
**Include:**

1 40" Wall Track, 1 Wall Upright, 1 Vented Shelf Add-On Kit, 1 Hanging Pegboard, Accessories\*

CODE	DESCRIPTION	LIST PRICE EA.
EWSA36SINK	SINK KIT	\$ 940.00
EWSA36PREP	PREP KIT	1,065.00
EWSA36TASK	TASK KIT	545.00

Case Pack: 1 each    Color: Black (110).

\*Task Stations Do Not Include Accessories. Accessories Must Be Purchased Separately.  
Wall mounting hardware not included. Accessories include screws for pegboard installation.



Task Station Add-on Kit

# Individual Components

## Wall Tracks

- Heavy duty, non-corrosive 6063 aluminum.
- Pre-drilled drain holes 16" on center.
- Wall mounting holes 8" on center.

CODE	L x D x H	LIST PRICE EA.
EWST40	40" x 1¾" x 1½"	\$ 30.00
EWST56	56" x 1¾" x 1½"	45.00

Case Pack: 1 each    Color: Aluminum (000).  
Wall mounting hardware not included.



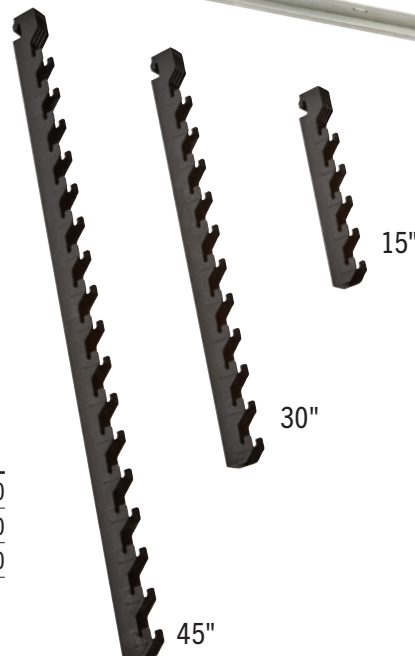
Wall Track

## Vertical Wall Uprights

- Extremely durable, reinforced nylon.
- Sturdy molded in upright hooks.
- Wall mounting holes 7½" on center.

W x D x H	STORAGE HOOKS	SINGLE PACK CODE	LIST PRICE EA.	DOUBLE PACK CODE	LIST PRICE EA.
1¾" x 2¼" x 15"	5	EWSU15	\$ 38.00	EWSU152PK	\$ 62.00
1¾" x 2¼" x 30"	11	EWSU30	65.00	EWSU302PK	107.00
1¾" x 2¼" x 45"	17	EWSU45	79.00	EWSU452PK	130.00

Color: Black (110).  
Wall mounting hardware not included.



15"

30"

45"

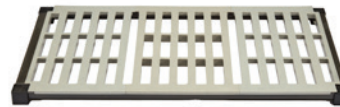
# Shelf Kits

- Extra strong composite and plastic shelf frame with 2 or 1 Universal Shelf Brackets.
- Each Universal Shelf Bracket must be installed on 3 hooks per wall upright. Overall shelf height: 8 $\frac{3}{8}$ ".
- Polypropylene shelf plates with molded-in antimicrobial CamGuard® protection.

## Solid



## Vented



**14"**  
DEPTH

LENGTH	STARTER CODE	LIST PRICE EA.	ADD-ON CODE	LIST PRICE EA.
24"	EWSSK1424S	\$ 227.00	EWSSKA1424S	\$ 191.00
30"	EWSSK1430S	242.00	EWSSKA1430S	205.00
36"	EWSSK1436S	253.00	EWSSKA1436S	215.00
42"	EWSSK1442S	263.00	EWSSKA1442S	227.00
48"	EWSSK1448S	275.00	EWSSKA1448S	238.00

STARTER CODE	LIST PRICE EA.	ADD-ON CODE	LIST PRICE EA.
EWSSK1424V	\$ 224.00	EWSSKA1424V	\$ 187.00
EWSSK1430V	238.00	EWSSKA1430V	201.00
EWSSK1436V	248.00	EWSSKA1436V	211.00
EWSSK1442V	257.00	EWSSKA1442V	221.00
EWSSK1448V	267.00	EWSSKA1448V	231.00

**18"**  
DEPTH

LENGTH	STARTER CODE	LIST PRICE EA.	ADD-ON CODE	LIST PRICE EA.
24"	EWSSK1824S	\$ 255.00	EWSSKA1824S	\$ 212.00
30"	EWSSK1830S	269.00	EWSSKA1830S	226.00
36"	EWSSK1836S	284.00	EWSSKA1836S	241.00
42"	EWSSK1842S	303.00	EWSSKA1842S	260.00
48"	EWSSK1848S	316.00	EWSSKA1848S	273.00

STARTER CODE	LIST PRICE EA.	ADD-ON CODE	LIST PRICE EA.
EWSSK1824V	\$ 243.00	EWSSKA1824V	\$ 200.00
EWSSK1830V	255.00	EWSSKA1830V	213.00
EWSSK1836V	265.00	EWSSKA1836V	223.00
EWSSK1842V	288.00	EWSSKA1842V	235.00
EWSSK1848V	299.00	EWSSKA1848V	250.00

**21"**  
DEPTH

LENGTH	STARTER CODE	LIST PRICE EA.	ADD-ON CODE	LIST PRICE EA.
24"	EWSSK2124S	\$ 276.00	EWSSKA2124S	\$ 226.00
30"	EWSSK2130S	293.00	EWSSKA2130S	242.00
36"	EWSSK2136S	304.00	EWSSKA2136S	260.00
42"	EWSSK2142S	321.00	EWSSKA2142S	285.00
48"	EWSSK2148S	337.00	EWSSKA2148S	302.00

STARTER CODE	LIST PRICE EA.	ADD-ON CODE	LIST PRICE EA.
EWSSK2124V	\$ 263.00	EWSSKA2124V	\$ 216.00
EWSSK2130V	277.00	EWSSKA2130V	232.00
EWSSK2136V	287.00	EWSSKA2136V	242.00
EWSSK2142V	306.00	EWSSKA2142V	271.00
EWSSK2148V	324.00	EWSSKA2148V	289.00

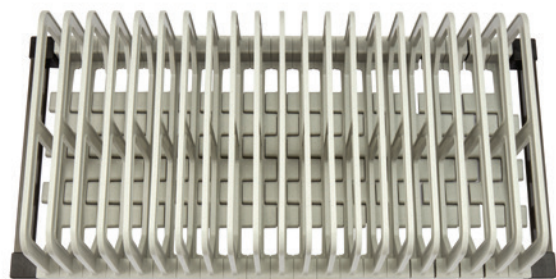
**24"**  
DEPTH

LENGTH	STARTER CODE	LIST PRICE EA.	ADD-ON CODE	LIST PRICE EA.
24"	EWSSK2424S	\$ 294.00	EWSSKA2424S	\$ 246.00
30"	EWSSK2430S	312.00	EWSSKA2430S	264.00
36"	EWSSK2436S	328.00	EWSSKA2436S	284.00
42"	EWSSK2442S	357.00	EWSSKA2442S	309.00
48"	EWSSK2448S	379.00	EWSSKA2448S	331.00

STARTER CODE	LIST PRICE EA.	ADD-ON CODE	LIST PRICE EA.
EWSSK2424V	\$ 284.00	EWSSKA2424V	\$ 236.00
EWSSK2430V	299.00	EWSSKA2430V	251.00
EWSSK2436V	309.00	EWSSKA2436V	261.00
EWSSK2442V	339.00	EWSSKA2442V	282.00
EWSSK2448V	351.00	EWSSKA2448V	303.00

Case Pack: 1 each    Color: Brushed Graphite (580).

Case Pack: 1 each    Color: Brushed Graphite (580).



## Drying Rack Shelf Kits

- Open shelf frame with polypropylene drying rack dividers.
- 1 $\frac{1}{4}$ " slot spacing for sheet pans, trays and cutting boards.
- Ships knockdown. Install dividers with rubber mallet.

OVERALL DIMENSIONS	DRYING SLOTS	STARTER CODE	LIST PRICE EA.	ADD-ON CODE	LIST PRICE EA.
18" x 36" x 14 $\frac{1}{2}$ "	20	EWSDRY1836	\$ 496.00	EWSDRYA1836	\$ 478.00
18" x 48" x 14 $\frac{1}{2}$ "	28	EWSDRY1848	549.00	EWSDRYA1848	531.00

Case Pack: 1 each    Color: Speckled Gray (480).

Kits Include: 1 Open Shelf Frame, 1 or 2 Straight Universal Shelf Brackets, 21 each (36" shelf length) or 29 each (48" shelf length) Drying Rack Dividers.



Individual Drying Rack Divider



# Open Shelf Frames and Universal Shelf Brackets

- Combine with shelf brackets and accessories to create custom storage sections or stations.
- Install with Straight or Angled Universal Shelf Brackets.
- Add Divider Bars with Food Pans. Place Drying Cradles or Wine Cradles directly on the frame.

## Open Shelf Frames

14" DEPTH	CODE	LENGTH	LIST PRICE EA.
	EWSOPEN1436	36"	\$ 121.00
	EWSOPEN1448	48"	\$ 138.00

18" DEPTH	CODE	LENGTH	LIST PRICE EA.
	EWSOPEN1836	36"	\$ 148.00
	EWSOPEN1848	48"	168.00

21" DEPTH	CODE	LENGTH	LIST PRICE EA.
	EWSOPEN2136	36"	\$ 158.00
	EWSOPEN2148	48"	178.00

24" DEPTH	CODE	LENGTH	LIST PRICE EA.
	EWSOPEN2436	36"	\$ 170.00
	EWSOPEN2448	48"	188.00

Case Pack: 1 each      Color: Brushed Graphite (580).



## Universal Shelf Brackets

SHELF DEPTH	STRAIGHT CODE	LIST PRICE EA.	ANGLED CODE	LIST PRICE EA.
14"	EWSSBS14	\$ 50.00	EWSSBA14	\$ 50.00
18"	EWSSBS18	54.00	EWSSBA18	54.00
21"	EWSSBS21	58.00	EWSSBA21	58.00
24"	EWSSBS24	62.00	EWSSBA24	62.00

Case Pack: 1 each      Color: Black (110).



## Open Shelf Frame Accessories

### Straight Shelf Divider Bars

- Use to hang a variety of food pans or food boxes.
- Can also be used to hang drying cradles vertically.
- Raised bar on front edge helps keep pans/boxes in place.

CODE	OPEN SHELF FRAME DEPTH	LIST PRICE EA.
CBDBS14	14"	\$ 6.70
CBDBS18	18"	10.00
CBDBS21	21"	10.20
CBDBS24	24"	10.70

Case Pack: 4 each      Color: Speckled Gray (480).



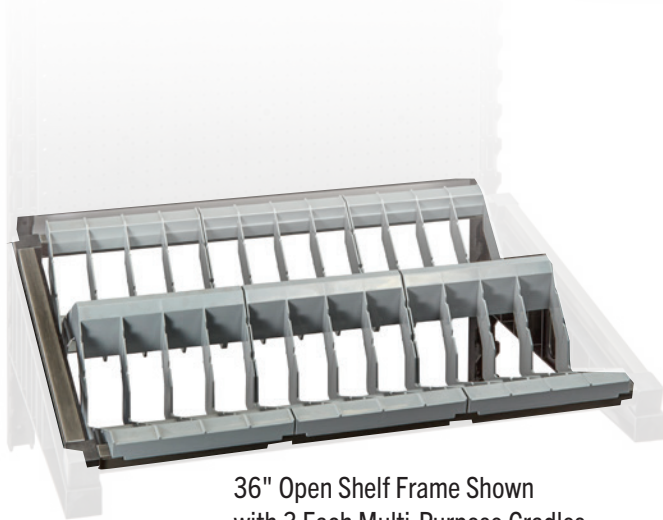
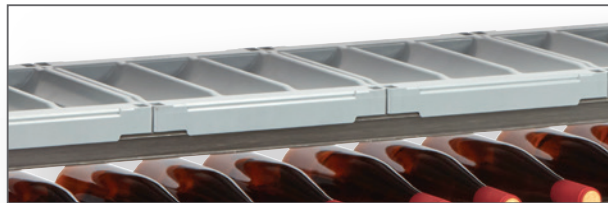
# Open Shelf Frame Accessories

## Wine Cradle Kits

- Use to store up to 12 bottles per shelf.
- Fits 48" long Open Shelf Frame only.

CODE	FRAME DEPTH	LIST PRICE EA.
CSWRC14P4	14"	\$ 120.00
CSWRC18P4	18"	145.00

Case Pack: 4 each      Color: Soft Gray (151).



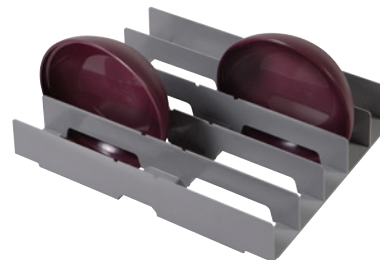
36" Open Shelf Frame Shown with 3 Each Multi-Purpose Cradles and Angled Universal Shelf Brackets

## Drying & Storage Racks

- Use to dry and store miscellaneous prep or storage items.
- Fits 24" deep Open Shelf Frames.

CODE	DESCRIPTION	36" FRAME LENGTH	48" FRAME LENGTH	LIST PRICE EA.
CSDR8	MULTI PURPOSE	3 Each	4 Each	\$ 60.50
CSDDC24	DOME/PLATE COVER	3 Each	—	87.50

Case Pack: 1 each      Color: Soft Gray (151).



## Pegboards

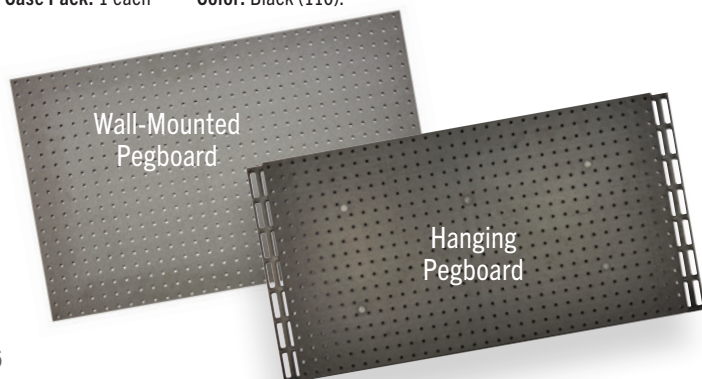
- ¼" thick ABS plastic with ¼" diameter molded-in peg holes.
- Attach securely onto wall upright hooks or mount directly onto the wall between wall uprights.
- Maximum weight bearing per pegboard is 100 lbs.

### Hanging Pegboard

Pegboard can be installed to hang lower than bottom of uprights. At least 4 slot sets (7 sets per side) must be fully engaged on wall upright hooks.

CODE	DIMENSIONS H X L	LIST PRICE EA.
EWSPB36	18" x 36"	\$ 235.00

Case Pack: 1 each      Color: Black (110).



### Wall Mount Pegboard

18" HEIGHT	CODE	LENGTH	LIST PRICE EA.
	EWSFP1824	24"	\$ 135.00
	EWSFP1830	30"	150.00
	EWSFP1836	36"	200.00
	EWSFP1842	42"	210.00
	EWSFP1848	48"	225.00

24" HEIGHT	CODE	LENGTH	LIST PRICE EA.
	EWSFP2430	30"	\$ 205.00
	EWSFP2436	36"	225.00
	EWSFP2448	48"	285.00

30" HEIGHT	CODE	LENGTH	LIST PRICE EA.
	EWSFP3036	36"	\$ 270.00
	EWSFP3048	48"	350.00

Case Pack: 1 each      Color: Black (110).  
Wall mounting hardware included.



# Pegboard Accessories

- Type 304 Stainless Steel.
- Each accessory includes mounting screws.
- Unique double locking tab design.
- Superior stability and performance.
- Maximum weight bearing per accessory is 15 lbs.

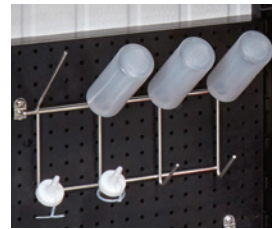
CODE	DESCRIPTION	OVERALL DIMENSIONS L/W x D x H	LIST PRICE EA.
EWSACC1	BOTTLE HOLDER	12¾" x 5" x 8"	\$ 65.00
EWSACC2	LARGE UTENSIL HOLDER	11¾" x 10¼" x 3¾"	70.00
EWSACC3	SMALL UTENSIL HOLDER	11¾" x 4¾" x 3¾"	50.00
EWSACC4	CYLINDER WITH HOLDER	4½" x 6½" x 6½"	80.00
EWSACC5	BIN WITH HOLDER	5" x 12½" x 4¼"	40.00
EWSACC6	LARGE WIRE BASKET	17¾" x 7¾" x 6½"	110.00
EWSACC7	⅓ DRAIN PAN WITH HOLDER*	12¾" x 7" x 5¾"	50.00
EWSACC8	6" STRAIGHT PEGS, 8 EACH	¾" x 6½" x 1¾"	85.00
EWSACC9	SMALL SHELF/LID HOLDER	14¾" x 8½" x 3"	50.00

Case Pack: 1 each      Color: Stainless Steel (000).

\*This is a Cambro® Polypropylene Colander Pan, 1/3 Size, Product Code: 35CLRPP190.

Hardware: Pegboard screws included with each accessory.

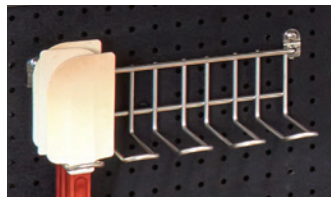
Recommended Tool: Phillips Head #2 Screwdriver.



**EWSACC1**  
BOTTLE HOLDER



**EWSACC2**  
LARGE UTENSIL HOLDER



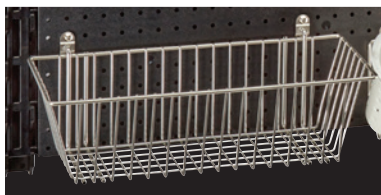
**EWSACC3**  
SMALL UTENSIL HOLDER



**EWSACC4**  
CYLINDER  
WITH HOLDER



**EWSACC5**  
LARGE BIN WITH HOLDER



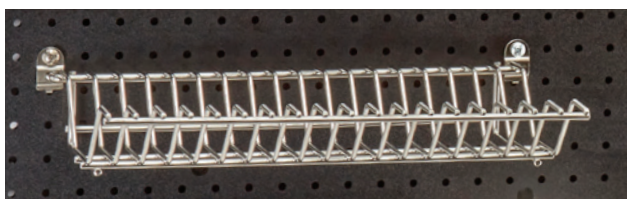
**EWSACC6**  
LARGE WIRE BASKET



**EWSACC7**  
DRAIN PAN WITH HOLDER



**EWSACC8**  
6" STRAIGHT PEGS



**EWSACC9**  
SMALL SHELF/LID HOLDER

## Other Accessories

- Use to prevent contents from falling off shelves.
- Rods are made of extra strong composite material.
- Plastic brackets snap tightly and securely onto frames.

### Full Shelf Rail Kits (2 ends, 1 front)

14" DEPTH	CODE	LENGTH	LIST PRICE EA.
	EWSR1424	24"	\$ 97.00
	EWSR1430	30"	109.00
	EWSR1436	36"	113.00
	EWSR1442	42"	117.00
	EWSR1448	48"	121.00

18" DEPTH	CODE	LENGTH	LIST PRICE EA.
	EWSR1824	24"	\$ 99.00
	EWSR1830	30"	111.00
	EWSR1836	36"	116.00
	EWSR1842	42"	120.00
	EWSR1848	48"	123.00

21" DEPTH	CODE	LENGTH	LIST PRICE EA.
	EWSR2124	24"	\$ 101.00
	EWSR2130	30"	113.00
	EWSR2136	36"	118.00
	EWSR2142	42"	122.00
	EWSR2148	48"	125.00

24" DEPTH	CODE	LENGTH	LIST PRICE EA.
	EWSR2424	24"	\$ 105.00
	EWSR2430	30"	116.00
	EWSR2436	36"	121.00
	EWSR2442	42"	125.00
	EWSR2448	48"	129.00

Case Pack: 1 each Color: Soft Gray (151).  
Each Kit Includes: 3 rods, 1 bag with 6 closed end brackets and 2 middle brackets.

## End Only Rail Kits

CODE	LENGTH	LIST PRICE EA.
EWSR14E	14"	\$ 43.00
EWSR18E	18"	44.00
EWSR21E	21"	45.00
EWSR24E	24"	47.00

Case Pack: 1 each Color: Soft Gray (151).  
Each Kit Includes: 1 end rod, 1 bag with 2 closed end brackets.

## Front Only Rail Kits

CODE	LENGTH	LIST PRICE EA.
EWSR24F	24"	\$ 78.00
EWSR30F	30"	84.00
EWSR36F	36"	90.00
EWSR42F	42"	96.00
EWSR48F	48"	103.00

Case Pack: 1 each Color: Soft Gray (151).  
Each Kit Includes: 1 front rod, 1 bag with 2 closed end brackets and 2 middle brackets.



Height from top of shelf to top of the rail is 2".



## Shelf Divider Panels

- Installs directly onto shelves, front and back.
- Use to separate and organize ingredients or storage products.

CODE	DIMENSIONS D X H	LIST PRICE EA.
CSSD188	18" x 8"	\$ 22.85
CSSD218	21" x 8"	24.85
CSSD248	24" x 8"	26.90

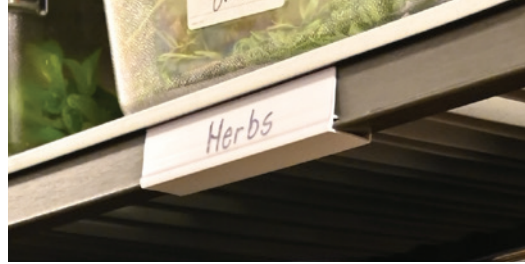
Case Pack: 1 each Color: Soft Gray (151).



## Identification Tag

- Clips directly onto front shelf traverse.
- Made of highly durable plastic with a clear front panel.

CODE	DIMENSIONS	LIST PRICE EA.
CBID6	6" x 1"	\$ 3.75
Case Pack: 12 each	Color: Clear/White (000).	



**CAUTION! PLEASE READ PRIOR TO INSTALLATION!**



- To facilitate the installation of Cambro Elevation Wall Shelving System, properly secure it to an adjacent wall using a professional installation company or your company's qualified Maintenance or Engineering personnel to ensure adequate wall securement, adhere to proper load bearing requirements, and to avoid all utilities.
- Mounting of tracks, uprights, and wall mounted peg boards solely to drywall is NOT recommended.
- The first and last holes in a continuous length of wall track MUST BE installed into a wood stud or acceptable reinforcement (blocking) with appropriate hardware.
- If 12" (30 cm) or more of the track extends beyond a wood wall stud, the section of wall between the studs MUST BE appropriately blocked to provide the wall track with a secure surface to complete the installation.
- Appropriate hardware must be installed AT LEAST every 16" (40 cm) (on each stud) along the track.
- When installing uprights WITHOUT track, the first and last holes in each upright MUST be installed into a wood stud or appropriate reinforcement (blocking) with appropriate hardware.
- Wall tracks, uprights and wall mounted peg boards ARE NOT designed to replace additional structural support for walls. Installers should use discretion and properly reinforce walls before installing wall tracks, uprights, and wall mounted peg boards.
- HARDWARE NOT INCLUDED with wall shelving products.
- **NOTICE:** Regular inspections of product after installation is highly recommended. Tighten loose fasteners and replace damaged parts with new approved Cambro parts. All parts can be easily removed for cleaning and are commercial dishwasher safe.



**camguard**  
ANTIMICROBIAL SHELF PLATES

PATENT APPLIED FOR



Access our Digital Catalog.  
Scan the QR code or visit  
[cambro.com/catalog](http://cambro.com/catalog)

**CAMBRO**  
TRUSTED DURABILITY

Customer Service: (800) 833-3003  
© Cambro Manufacturing Company, Huntington Beach, CA 92647  
LIT2424 Printed in U.S.A. 9/24

[www.cambro.com](http://www.cambro.com)