

INSTRUCTIONS

6115, 6430 AND 6460/6460M PEELER LINER

INSTALLATION

WARNING: BEFORE SERVICING, UNPLUG (CORD-CONNECTED UNITS) OR DISCONNECT THE ELECTRICAL POWER TO THE MACHINE AND FOLLOW LOCKOUT / TAGOUT PROCEDURES (CONDUIT-CONNECTED UNITS).

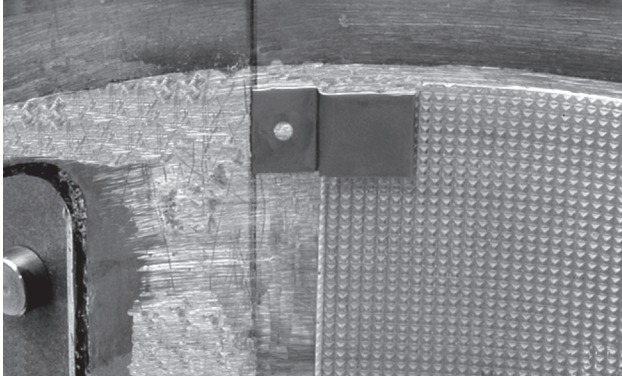


Fig. 1

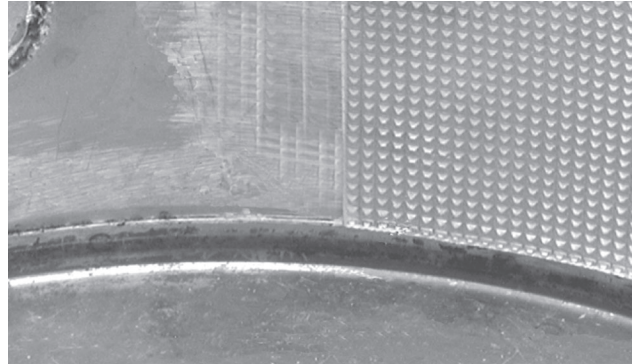


Fig. 2

1. Slide the liner into the hopper, ensuring the liner is seated on the retaining brackets (Fig. 1) and resting on the top of the lip of the hopper chamber (Fig. 2).

NOTE: The objective is for the brackets to secure the end of the liner and serve as a stop to prevent the liner from moving when the latch is closed. The liner **MUST** be secure and free of play for proper machine operation.

2. Push the liner keeper into the hole provided.
3. Secure the keeper using the exterior latch (Fig. 3).
4. Install the hopper top.



Fig. 3

CLEANING

WARNING: BEFORE CLEANING, UNPLUG (CORD-CONNECTED UNITS) OR DISCONNECT THE ELECTRICAL POWER TO THE MACHINE AND FOLLOW LOCKOUT / TAGOUT PROCEDURES (CONDUIT-CONNECTED UNITS).

1. After removal of the peeler liner, use soap and water to clean.
2. Scrub with a nonabrasive brush.
3. Allow to air dry before installation.
4. Put the top on the hopper.
5. Turn on the water and flush the interior of the hopper. Turn off the water.



6. Remove the hopper top and clean the hopper top in a sink.
7. Lift out the abrasive disc (it is NOT fastened to the shaft) and scrub with mild soap and water. Rinse thoroughly with water.

NOTE: If the abrasive disc should stick and is NOT easily removed, it can be loosened by removing the hex head screw on top of the hub and threading a longer screw (such as $\frac{5}{16}$ in.-18 x $1\frac{1}{2}$ in.) in until the disc loosens.

8. Turn on the water and thoroughly clean the interior of the hopper with mild soap and a brush. Rinse thoroughly with water.
9. If the peeler is equipped with a peel trap, remove the peel trap drawer and thoroughly clean the trap.
10. The discharge chute MUST be left open when unit is NOT in use in order to prolong life of the door seal.

