



# CATALOG OF REPLACEMENT PARTS

## BELT SEALERS & SHRINK TUNNEL

ML-44196 Model SP-5

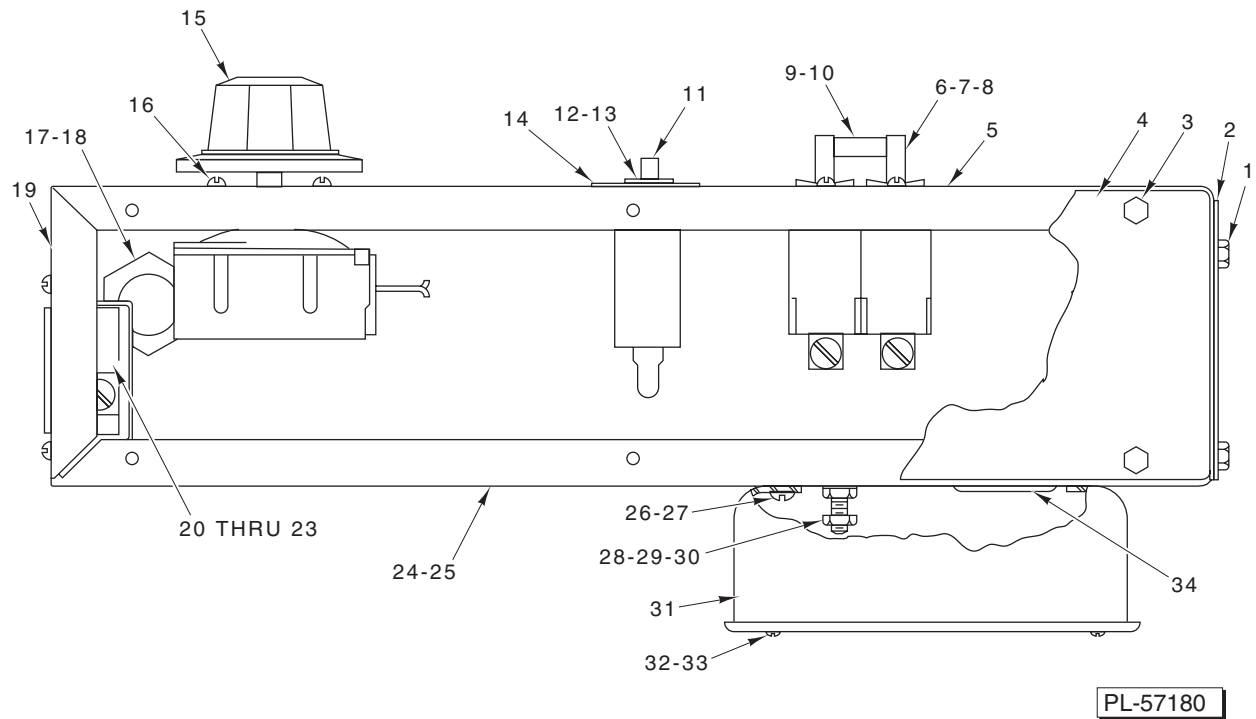
### PRIOR MLS COVERED IN THIS CATALOG

ML-44136	Model S
ML-44137	Model S
ML-44138	Model SP
ML-44139	Model SP
ML-44094	Model S
ML-44095	Model SP
ML-26239	Model S
ML-26240	Model SP
ML-26300	Model S
ML-26301	Model SP
ML-26241	Model TS (Shrink Tunnel)
ML-26302	Model TS (Shrink Tunnel)
ML-26245	Model 223A
ML-26246	Model 52A
ML-26248	Model 51A
ML-26263	Model 61A



**Table of Contents**

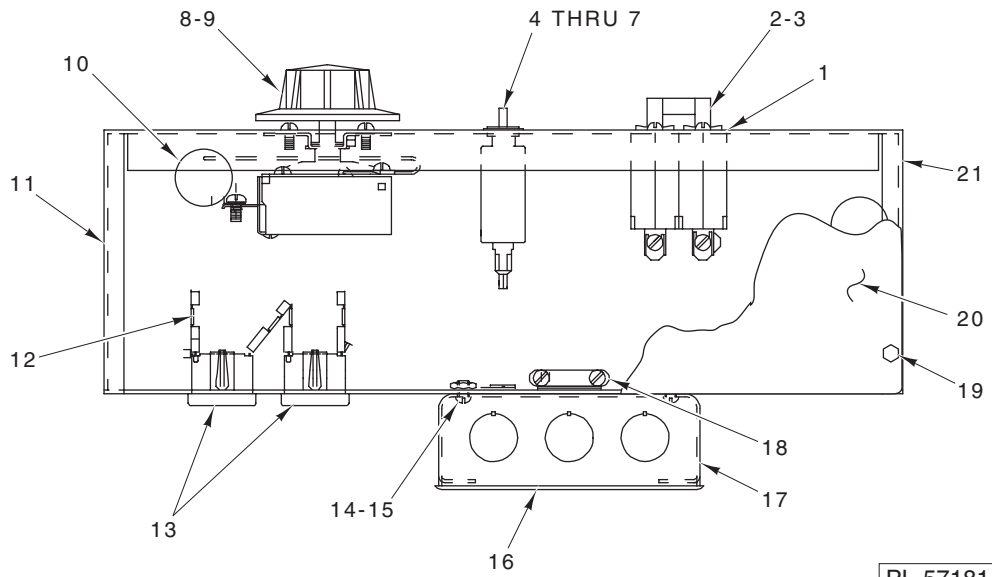
5 SWITCH BOX UNIT (ALL EXCEPT ML-44196)  
7 SWITCH BOX UNIT (ML-44196)  
9 FRAME UNIT  
(ML-44137, ML-44136, ML-44095, ML-26300, & ML-26239)  
11 FRAME UNIT  
(ML-44139, ML-44138, ML-44094, ML-26301, & ML-26240)  
13 FRAME UNIT (ML-44196)  
15 DRIVE UNIT  
(ML-44139, ML-44138, ML-44094, ML-26301, & ML-26240)  
17 DRIVE UNIT (ML-44196)  
18 51A LEG UNIT (ML-26248)  
19 52A SEALER SUPPORT (ML-26246)  
20 61A CONVEYOR SUPPORT (ML-26263)  
21 223A ROLLER DISCHARGE UNIT (ML-26245)  
22 CONDUIT (ML-26241 & ML-26302)  
23 FRAME AND HEATERS (ML-26241 & ML-26302)  
24 HOUSING UNIT (ML-26241 & ML-26302)  
25 BLOWER UNIT (ML-26241 & ML-26302)  
27 W3-2/SP-5 CONNECTING PARTS  
28 MISCELLANEOUS  
28 RECOMMENDED SPARE PARTS LIST



**SWITCH BOX UNIT  
(ALL EXCEPT ML-44196)**

**SWITCH BOX UNIT  
(ALL EXCEPT ML-44196)**

ILLUS.	PART NO.	NAME OF PART	AMT.
PL-57180			
1	SD-008-48	Self-Tapping Screw 8-18 x 1/4 Hex Hd., Type B .....	3
2	00-130558	Cover – End .....	1
3	SD-008-48	Self-Tapping Screw 8-18 x 1/4 Hex Hd., Type B .....	6
4	00-130577	Cover – Switch Box Front .....	1
5	00-131859	Plate – Name (Master On) .....	1
6	00-130576-00001	Breaker – Circuit (25 Amp.) (Used With ML-26302 TS Tunnel) .....	1
7	SC-009-77	Mach. Screw 6-32 x 3/16 Rd. Hd. ....	2
8	00-134289	Breaker – Circuit (15 Amp.) .....	1
9	00-130576-00002	Spacer .....	1
10	00-130576-00003	Pin .....	1
11	00-130543	Breaker – Outlet .....	1
12	00-130856	Nut – Hex .....	1
13	00-130858	Nut Knurled .....	1
14	00-130857	Plate – Name .....	1
15	00-044352	Thermostat (450 F.) .....	1
16	SC-009-70	Mach. Screw 6-32 x 1/4 Rd. Hd. ....	2
17	FE-009-41	Conduit Nipple 1/2 Hex .....	1
18	FE-006-07	Lock Nut 1/2 (Cnd.) .....	1
19	00-130562	Plate – Name (Outlet) .....	1
20	FE-012-25	Outlet (220-240 V., 50 Hz., 1 Ph.) .....	1
21	SC-009-81	Mach. Screw 8-32 x 3/16 Rd. Hd. (Use With Item 20) .....	2
22	FE-022-46	Outlet (120 V., 60 Hz., 1 Ph.) .....	2
23	00-130555	Adapter – Tab (Use With Item 22) .....	3
24	00-130571	Switch Box Assy. (120-240 V., 60 Hz., 1 Ph.) .....	1
25	00-130601	Switch Box Assy. (220-240 V., 50 Hz., 1 Ph.) .....	1
26	SC-009-70	Mach. Screw 6-32 x 1/4 Rd. Hd. ....	2
27	NS-009-07	Mach. Nut 6-32 Hex .....	2
28	SC-008-41	Mach. Screw 10-32 x 1/2 Rd. Hd. ....	1
29	WL-004-40	Lockwasher #10 Medium .....	1
30	NS-009-29	Mach. Nut 10-32 Hex .....	2
31	FE-013-36	Box – Ring .....	1
32	00-130556	Ring Box Cover Assy. (120-240 V., 60 Hz., 1 Ph.) .....	1
33	00-130606	Ring Box Cover Assy. (220-240 V., 50 Hz., 1 Ph.) .....	1
34	FE-016-02	Bushing – Snap .....	1

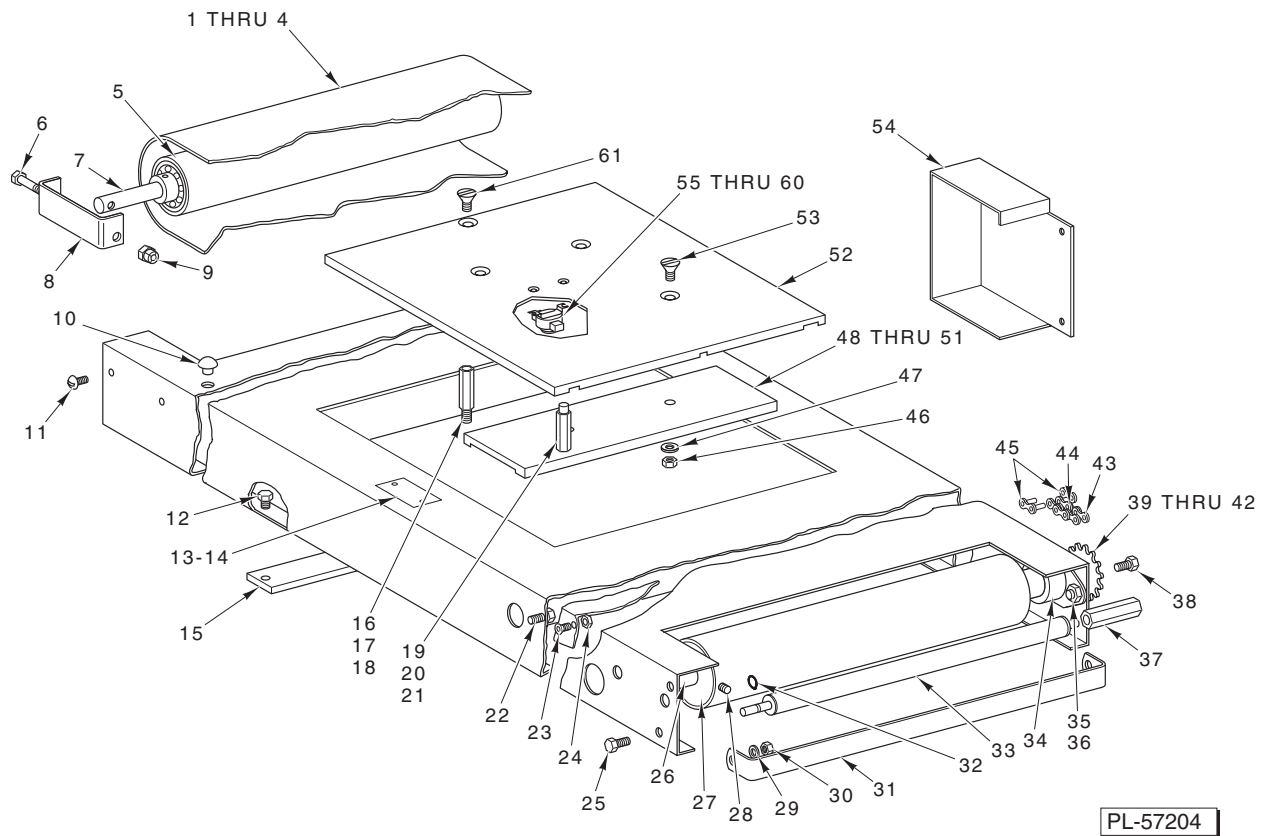


PL-57181

**SWITCH BOX UNIT (ML-44196)**

**SWITCH BOX UNIT (ML-44196)**

ILLUS. PL-57181	PART NO.	NAME OF PART	AMT.
1	00-131859	Plate – Name (Master On) .....	1
2	SC-009-70	Mach. Screw 6-32 x 1/4 Rd. Hd. ....	2
3	00-134289	Breaker – Circuit (15 Amp.) .....	1
4	00-130543	Breaker – Outlet (10 Amp.) .....	1
5	00-130856	Nut – Hex .....	1
6	00-130858	Nut – Knurled .....	1
7	00-130857	Plate – Name .....	1
8	SC-009-70	Mach. Screw 6-32 x 1/4 Rd. Hd. ....	2
9	00-044352	Thermostat (450 F.) .....	1
10	FE-016-02	Bushing – Snap .....	2
11	00-130562	Plate – Name (Outlet) .....	1
12	00-130555	Adapter – Tab .....	3
13	FE-022-46	Receptacle – Electrical .....	2
14	NS-011-07	Nut 6-32 Hex .....	2
15	SC-113-37	Mach. Screw 6-32 x 5/8 Phil. Pan Hd. ....	2
16	00-130556	Cover – Junction Box .....	1
17	FE-013-36	Box – Conduit .....	1
18	00-442750-00014	Connector – Romex (3/8) .....	1
19	SC-110-97	Mach. Screw 10-32 x 1/2 Phil. Truss Hd. ....	4
20	00-442750-00007	Cover – Control Housing .....	1
21	00-442750-00006	Housing – Electrical Box .....	1

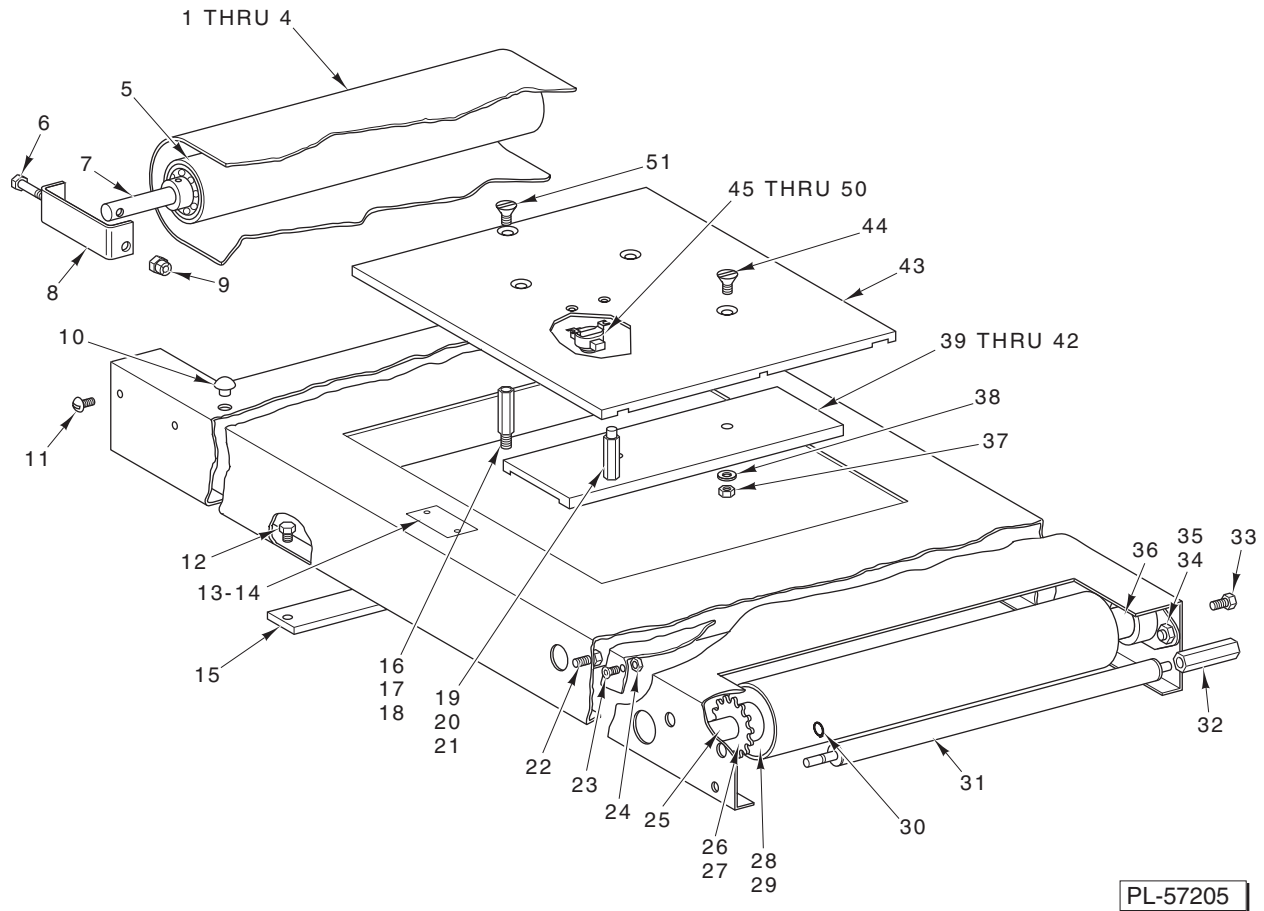


**FRAME UNIT**  
**(ML-44137, ML-44136, ML-44095, ML-26300, & ML-26239)**



**FRAME UNIT**  
**(ML-44137, ML-44136, ML-44095, ML-26300, & ML-26239)**

ILLUS.	PART NO.	NAME OF PART	AMT.
PL-57204			
1	00-442761-00001	Belt – Conveyor (White) (Incls. Item 4)	AR
2	00-442761-00002	Belt – Conveyor (Red) (Incls. Item 4)	AR
3	00-442761-00003	Belt – Conveyor (Black) (Incls. Item 4)	AR
4	00-442762	Pin – Fabric Wound	1
5	00-130420	Roller Assy.	1
6	00-132796	Screw – Adjusting	2
7	00-130423	Shaft	1
8	00-132795	Bracket – Take Up	2
9	NS-032-07	Lock Nut 1/4-20 Hex “Flexloc”	2
10	00-130563	Bumper	2
11	SC-060-30	Mach. Screw 10-32 x 1/4 Rd. Hd.	4
12	SC-062-20	Cap Screw 1/4-20 x 3/8 Hex Hd.	4
13	00-438131-00007	Plate – Warning	2
14	SD-033-56	Self-Tapping Screw 3/16 Rd. Hd., Type U	4
15	00-130564	Tie Bar – Frame	2
16	00-130561	Standoff – Hot Plate	3
17	SC-036-14	Cap Screw 1/4-20 x 1/2 Hex Hd.	3
18	WL-003-38	Lockwasher 1/4 Medium	3
19	00-130560	Spacer – Hot Plate	2
20	SC-036-14	Cap Screw 1/4-20 x 1/2 Hex Hd.	2
21	WL-003-38	Lockwasher 1/4 Medium	2
22	SC-062-20	Cap Screw 1/4-20 x 3/8 Hex Hd.	3
23	SC-040-58	Cap Screw 8-32 x 1/4 Soc. Fil. Hd.	1
24	NS-009-12	Nut 8-32 Hex	1
25	SC-036-14	Cap Screw 1/4-20 x 1/2 Hex Hd.	2
26	00-130418	Shaft – Drive (Non-Powered Machs.)	1
27	00-130415	Drive Roller Assy.	1
28	SC-047-11	Set Screw 1/4-20 x 3/8 Soc. Hdls., Cup Pt.	2
29	WL-003-38	Lockwasher 1/4 Medium	2
30	NS-013-02	Nut 1/4-20 Hex	2
31	00-130430	Bracket – Connecting	1
32	RR-011-04	Retaining Ring	2
33	00-131095	Pop-Out Roller Assy. (Incls. Item 32)	1
34	00-130414	Bearing – Roller	2
35	SC-090-14	Cap Screw 3/8-24 x 5/8 Hex Hd.	4
36	NS-013-27	Nut 3/8-24 Hex	4
37	00-130426	Block – Pop-Out Roller	2
38	SC-062-20	Cap Screw 1/4-20 x 3/8 Hex Hd.	2
39	00-134644	Sprocket – Main (15T) (Incls. Item 40) (Non-Powered Machs.)	1
40	SC-047-75	Set Screw 1/4-20 x 1/4 Soc. Hdls., Cup Pt.	2
41	00-134645	Sprocket – Drive (12T) (ILA) (Incls. Item 42)	1
42	SC-047-75	Set Screw 1/4-20 x 1/4 Soc. Hdls., Cup Pt.	2
43	00-127570	Link (#35) Offset	1
44	00-130099	Drive Chain Assy. (63P) (Incls. Items 43 & 45)	1
45	00-087165	Link – Chain Connector (#35)	1
46	NS-014-11	Nut 5/16-18 Hex (Brass)	4
47	WL-003-47	Lockwasher 5/16 Medium	4
48	00-046210	Element – Heater (120 V.) (1000 W.) (ML-44136 & ML-44137)	2
49	00-087017	Element – Heater (120 V.) (700 W.) (ML-26239, ML-26300, & ML-44095)	2
50	00-331792	Insulator – Element Terminal (Ceramic)	4
51	WL-008-07	Lockwasher #8 Internal Shakeproof	4
52	00-046370	Plate – Hot (Anodized)	1
53	SC-029-47	Mach. Screw 5/16-18 x 1 Flat Hd. (Brass)	4
54	00-130381	Cover	1
55	00-032908	Thermal Protector (ML-44136 & ML-44137)	1
56	SC-029-18	Mach. Screw 8-32 x 1/2 Flat Hd. (Brass) (ML-44136 & ML-44137)	2
57	WS-023-26	Washer (ML-44136 & ML-44137)	2
58	WL-006-02	Lockwasher #8 Medium (ML-44136 & ML-44137)	2
59	NS-010-11	Nut 8-32 Hex (Brass) (ML-44136 & ML-44137)	2
60	00-130554	Wiring Assy. (Use W/Item 55) (ML-44136 & ML-44137)	2
61	SC-029-70	Mach. Screw 1/4-20 x 5/8 Flat Hd. (Brass)	1

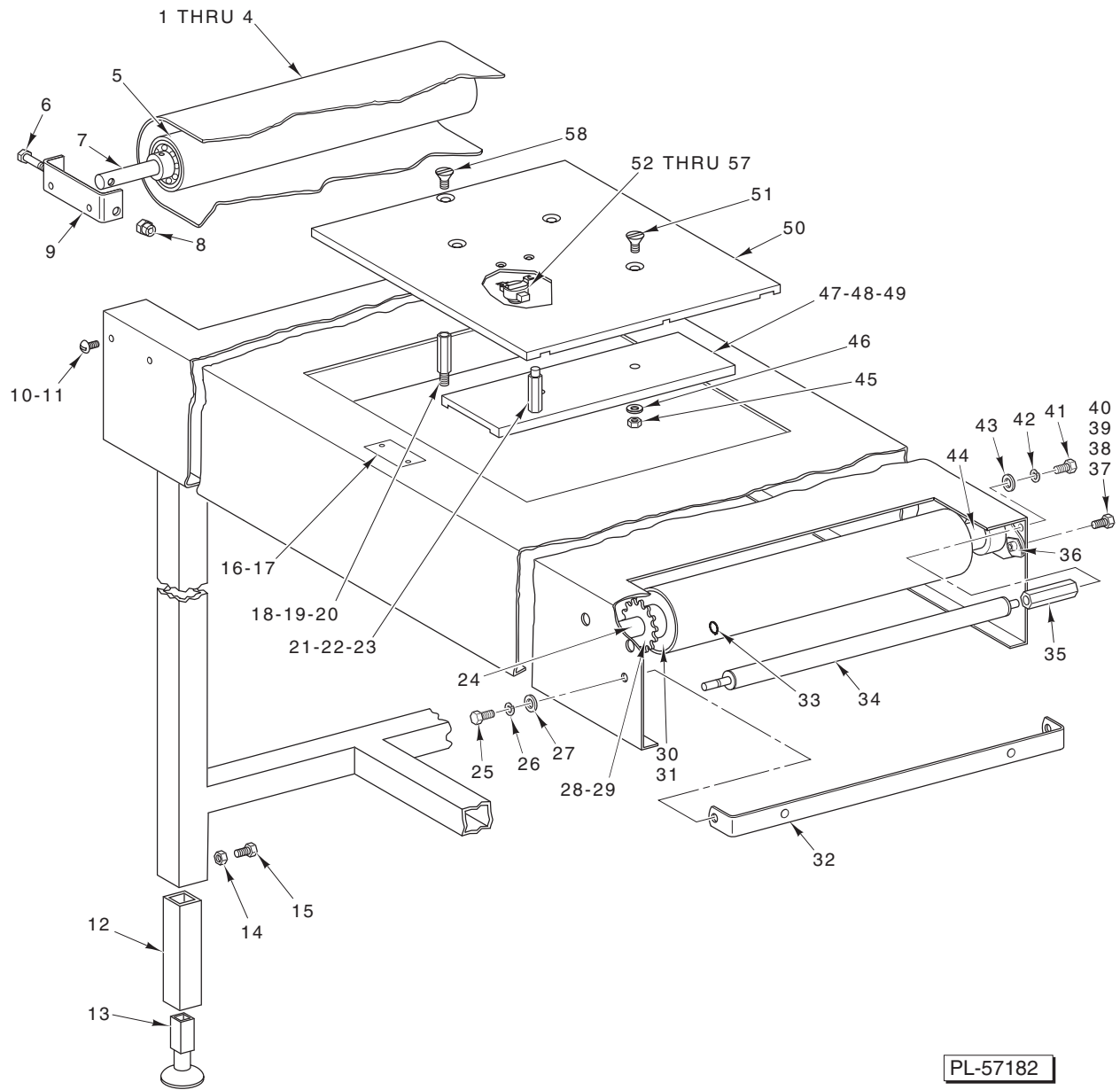


PL-57205

**FRAME UNIT**  
**(ML-44139, ML-44138, ML-44094, ML-26301, & ML-26240)**

**FRAME UNIT**  
**(ML-44139, ML-44138, ML-44094, ML-26301, & ML-26240)**

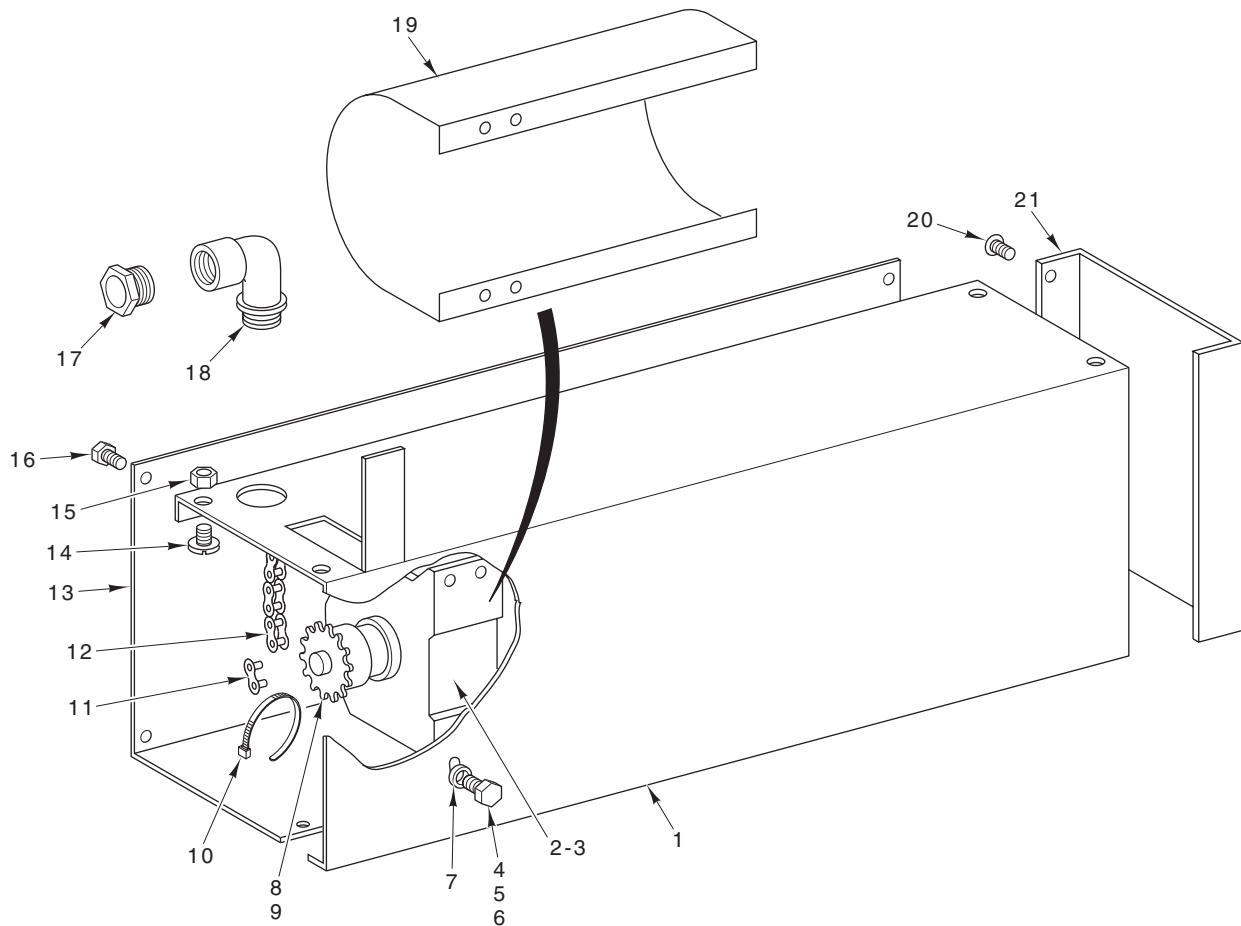
ILLUS. PL-57205	PART NO.	NAME OF PART	AMT.
1	00-442761-00001	Belt – Conveyor (White) (Incls. Item 4) .....	AR
2	00-442761-00002	Belt – Conveyor (Red) (Incls. Item 4) .....	AR
3	00-442761-00003	Belt – Conveyor (Black) (Incls. Item 4) .....	AR
4	00-442762	Pin – Fabric Wound .....	1
5	00-130420	Roller Assy. ....	1
6	00-132796	Screw – Adjusting .....	2
7	00-130423	Shaft .....	1
8	00-132795	Bracket – Take Up .....	2
9	NS-032-07	Lock Nut 1/4-20 Hex “Flexloc” .....	2
10	00-130563	Bumper .....	2
11	SC-060-30	Mach. Screw 10-32 x 1/4 Rd. Hd. ....	4
12	SC-062-20	Cap Screw 1/4-20 x 3/8 Hex Hd. ....	4
13	00-438131-00007	Plate – Warning .....	2
14	SD-033-56	Self-Tapping Screw 3/16 Rd. Hd., Type U .....	4
15	00-130564	Tie Bar – Frame .....	2
16	00-130561	Standoff – Hot Plate .....	3
17	SC-036-14	Cap Screw 1/4-20 x 1/2 Hex Hd. ....	3
18	WL-003-38	Lockwasher 1/4 Medium .....	3
19	00-130560	Spacer – Hot Plate .....	2
20	SC-036-14	Cap Screw 1/4-20 x 1/2 Hex Hd. ....	2
21	WL-003-38	Lockwasher 1/4 Medium .....	2
22	SC-062-20	Cap Screw 1/4-20 x 3/8 Hex Hd. ....	3
23	SC-040-58	Cap Screw 8-32 x 1/4 Soc. Fil. Hd. ....	1
24	NS-009-12	Nut 8-32 Hex .....	1
25	00-130596	Shaft – Drive (Power Units Only) .....	1
26	00-130598	Sprocket – Driven (13T) (Power Units Only) .....	1
27	SC-047-75	Set Screw 1/4-20 x 1/4 Soc. Hdls., Cup Pt. ....	2
28	00-130415	Drive Roller Assy. ....	1
29	SC-047-11	Set Screw 1/4-20 x 3/8 Soc. Hdls., Cup Pt. ....	2
30	RR-011-04	Retaining Ring .....	2
31	00-131095	Pop-Out Roller Assy. (Incls. Item 30) .....	1
32	00-130426	Block – Pop-Out Roller .....	2
33	SC-062-20	Cap Screw 1/4-20 x 3/8 Hex Hd. ....	2
34	SC-090-14	Cap Screw 3/8-24 x 5/8 Hex Hd. ....	4
35	NS-013-27	Nut 3/8-24 Hex .....	4
36	00-130414	Bearing – Roller .....	2
37	NS-014-11	Nut 5/16-18 Hex (Brass) .....	4
38	WL-003-47	Lockwasher 5/16 Medium .....	4
39	00-046210	Element – Heater (120 V.) (1000 W.) (ML-44138 & ML-44139) .....	2
40	00-087017	Element – Heater (120 V.) (700 W.) (ML-26240, ML-26301, & ML-44094) .....	2
41	00-331792	Insulator – Element Terminal (Ceramic) .....	4
42	WL-008-07	Lockwasher #8 Internal Shakeproof .....	4
43	00-046370	Plate – Hot (Anodized) .....	1
44	SC-029-47	Mach. Screw 5/16-18 x 1 Flat Hd. (Brass) .....	4
45	00-032908	Thermal Protector (ML-44138 & ML-44139) .....	1
46	SC-029-18	Mach. Screw 8-32 x 1/2 Flat Hd. (Brass) (ML-44138 & ML-44139) .....	2
47	WS-023-26	Washer (ML-44138 & ML-44139) .....	2
48	WL-006-02	Lockwasher #8 Medium (ML-44138 & ML-44139) .....	2
49	NS-010-11	Nut 8-32 Hex (Brass) (ML-44138 & ML-44139) .....	2
50	00-130554	Wiring Assy. (Use W/Item 45) (ML-44138 & ML-44139) .....	2
51	SC-029-70	Mach. Screw 1/4-20 x 5/8 Flat Hd. (Brass) .....	1



**FRAME UNIT  
(ML-44196)**

**FRAME UNIT  
(ML-44196)**

ILLUS. PL-57182	PART NO.	NAME OF PART	AMT.
1	00-442761-00001	Belt – Conveyor (White) (Incls. Item 4)	AR
2	00-442761-00002	Belt – Conveyor (Red) (Incls. Item 4)	AR
3	00-442761-00003	Belt – Conveyor (Black) (Incls. Item 4)	AR
4	00-442762	Pin – Fabric Wound	1
5	00-130420	Roller Assy.	1
6	00-132796	Screw – Adjusting	2
7	00-130423	Shaft	1
8	NS-041-04	Lock Nut 1/4-20 Hex “Esllok”	2
9	00-442750-00011	Bracket – Take Up	2
10	SC-110-97	Mach. Screw 10-32 x 1/2 Rd. Hd.	4
11	WL-006-07	Lockwasher #10 Helical	4
12	00-048357	Leg – Extension	4
13	00-048393	Foot	4
14	NS-013-02	Nut 1/4-20 Hex	4
15	SC-118-19	Cap Screw 1/4-20 x 3/4 Hex Hd.	4
16	00-438131-00007	Plate – Warning	2
17	SD-005-39	Self-Tapping Screw 3/16 Rd. Hd., Type U	4
18	00-442750-00010	Standoff – Hot Plate	3
19	SC-041-50	Cap Screw 1/4-20 x 1/2 Hex Hd.	3
20	WL-006-17	Lockwasher 1/4 Medium	3
21	00-442750-00008	Spacer – Hot Plate	2
22	SC-041-50	Cap Screw 1/4-20 x 1/2 Hex Hd.	2
23	WL-006-17	Lockwasher 1/4 Medium	2
24	00-130596	Shaft – Drive (Power Units Only)	1
25	SC-041-50	Cap Screw 1/4-20 x 1/2 Hex Hd.	2
26	WL-006-17	Lockwasher 1/4 Medium	2
27	WS-017-06	Washer	2
28	00-130598	Sprocket – Driven (13T) (Power Units Only)	1
29	SC-047-75	Set Screw 1/4-20 x 1/4 Soc. Hdls., Cup Pt.	2
30	00-130415	Drive Roller Assy.	1
31	SC-047-11	Set Screw 1/4-20 x 3/8 Soc. Hdls., Cup Pt.	2
32	00-442750-00015	Bracket – Connecting Adapter	1
33	RR-011-04	Retaining Ring	2
34	00-131095	Pop-Out Roller Assy. (Incls. Item 33)	1
35	00-130426	Block – Pop-Out Roller	2
36	00-443048	U-Nut (Clip)	4
37	SC-041-10	Cap Screw 5/16-18 x 5/8 Hex Hd.	4
38	WL-006-23	Lockwasher 5/16 Helical	4
39	WS-005-42	Washer	8
40	NS-015-11	Nut 5/16 Hex	4
41	SC-041-50	Cap Screw 1/4-20 x 1/2 Hex Hd.	2
42	WL-006-17	Lockwasher 1/4 Medium	2
43	WS-017-06	Washer	2
44	00-130414	Bearing – Roller	2
45	NS-014-11	Nut 5/16-18 Hex (Brass)	4
46	WL-003-47	Lockwasher 5/16 Medium	4
47	00-046210	Element – Heater (120 V.) (1000 W.)	2
48	WL-008-07	Lockwasher #8 Internal Shakeproof (Use With Item 49)	4
49	00-331792	Insulator – Element Terminal (Ceramic)	4
50	00-046370	Plate – Hot (Anodized)	1
51	SC-029-47	Mach. Screw 5/16-18 x 1 Flat Hd. (Brass)	4
52	00-032908	Thermal Protector	1
53	SC-029-18	Mach. Screw 8-32 x 1/2 Flat Hd. (Brass)	2
54	WS-023-26	Washer	2
55	WL-006-02	Lockwasher #8 Medium	2
56	NS-010-11	Nut 8-32 Hex (Brass)	2
57	00-130554	Wiring Assy. (Use With Item 52)	2
58	SC-029-70	Mach. Screw 1/4-20 x 5/8 Flat Hd. (Brass)	1

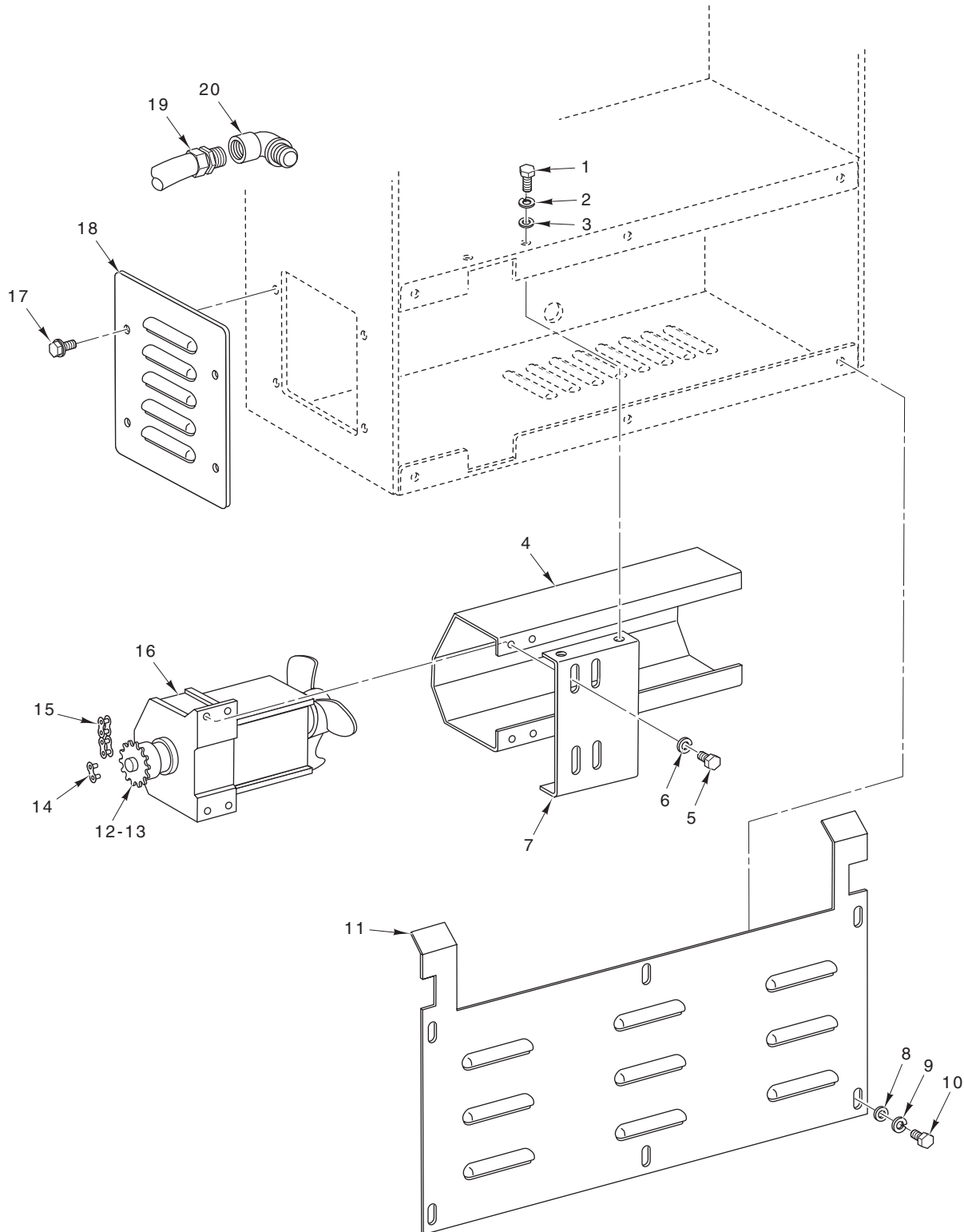


PL-57206

**DRIVE UNIT**  
**(ML-44139, ML-44138, ML-44094, ML-26301, & ML-26240)**

**DRIVE UNIT**  
**(ML-44139, ML-44138, ML-44094, ML-26301, & ML-26240)**

ILLUS. PL-57206	PART NO.	NAME OF PART	AMT.
1	00-130762	Motor Mount Plate Assy. ....	1
2	00-130594	Motor (208-240 V., 60 Hz., 1 Ph.) ....	1
3	00-131034	Motor (220-240 V., 50 Hz., 1 Ph.) ....	1
4	SC-037-80	Cap Screw 10-24 x 1/2 Hex Hd. ....	2
5	WL-004-40	Lockwasher #10 Medium ....	2
6	NS-008-02	Mach. Nut 10-24 Sq. Hd. ....	2
7	WS-023-20	Washer ....	2
8	00-130597	Sprocket (11T) ....	1
9	SC-075-42	Set Screw 10-32 x 1/4 Soc. Hdls., Cup Pt. ....	2
10	00-251199	Tie - Clamp ....	1
11	00-087165	Link - Chain Connector (#35) ....	1
12	00-130595	Drive Chain Assy. (Incls. Item 11) ....	1
13	00-334487	Cover - Motor Side ....	1
14	SC-060-56	Mach. Screw 10-32 x 5/16 Rd. Hd. ....	4
15	NS-009-29	Mach. Nut 10-32 Hex ....	4
16	SD-008-48	Self-Tapping Screw 8-18 x 1/4 Hex Hd., Type B ....	6
17	FE-009-41	Conduit 1/2 Hex ....	1
18	FE-016-13	Elbow 90 Deg. Bushed ....	1
19	00-132779	Shroud - Motor ....	1
20	SD-008-48	Self-Tapping Screw 8-18 x 1/4 Hex Hd., Type B ....	4
21	00-130593	Cover - Motor End	



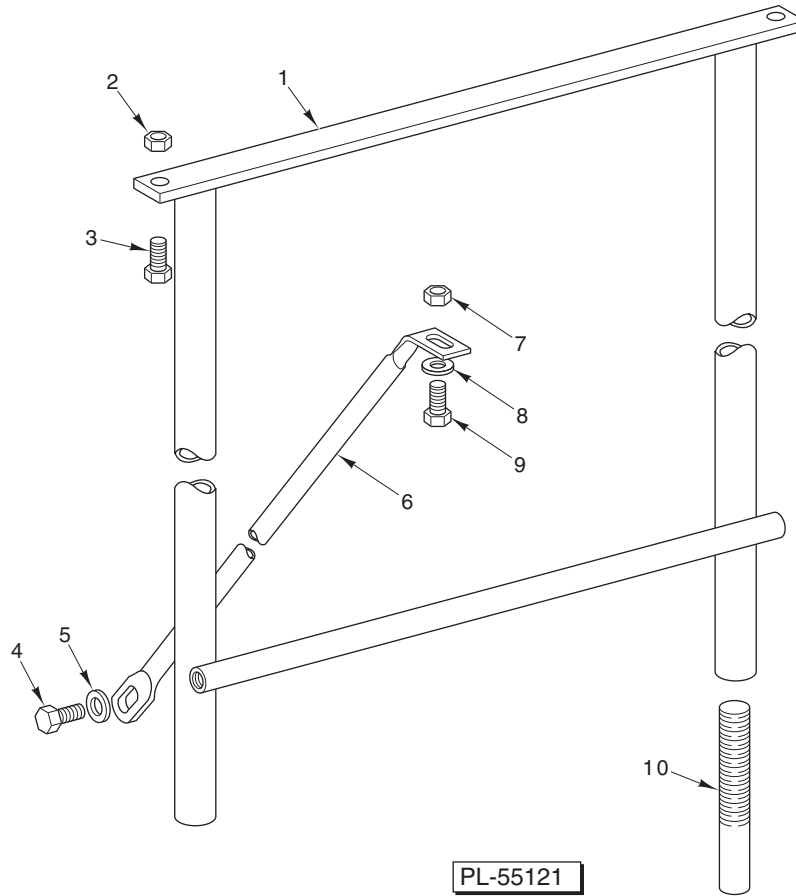
PL-57183

**DRIVE UNIT  
(ML-44196)**



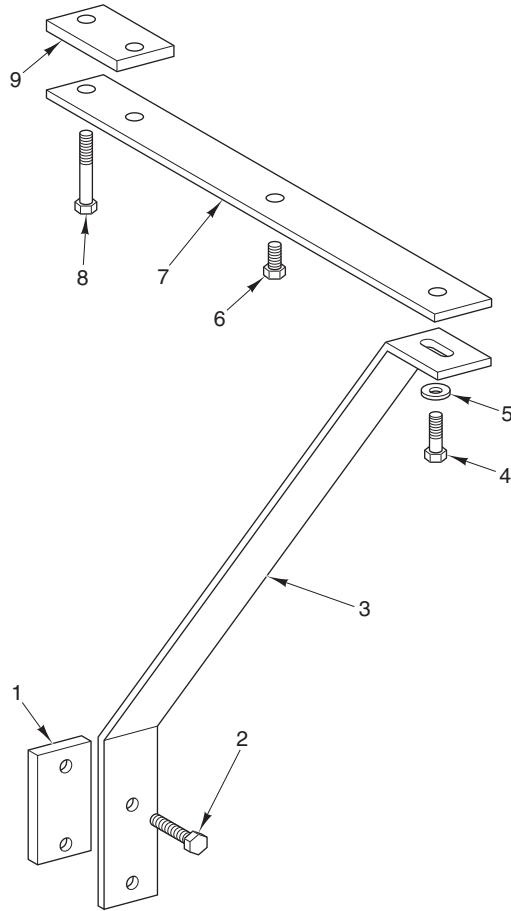
**DRIVE UNIT  
(ML-44196)**

ILLUS. PL-57183	PART NO.	NAME OF PART	AMT.
1	SC-041-50	Cap Screw 1/4-20 x 1/2 Hex Hd. ....	4
2	WL-006-17	Lockwasher 1/4 Medium .....	4
3	WS-017-06	Washer .....	4
4	00-442750-00002	Shroud – Motor .....	1
5	SC-118-33	Cap Screw 10-32 x 5/8 Hex Hd. ....	4
6	WL-006-07	Lockwasher #10 Helical .....	4
7	00-442750-00003	Bracket – Motor Mount .....	1
8	SC-041-50	Cap Screw 1/4-20 x 1/2 Hex Hd. ....	6
9	WL-006-17	Lockwasher 1/4 Medium .....	6
10	WS-017-06	Washer .....	6
11	00-442750-00005	Cover – Housing Motor .....	1
12	00-130597	Sprocket (11T) .....	1
13	SC-075-42	Set Screw 10-32 x 1/4 Soc. Hdls., Cup Pt. ....	2
14	00-087165	Link – Chain Connector (#35) .....	1
15	00-130595	Drive Chain Assy. (Incls. Item 14) .....	1
16	00-130594	Motor (208-240 V., 60 Hz., 1 Ph.) .....	1
17	SC-120-21	Cap Screw 8-32 x 1/2 Hex Washer Hd. ....	8
18	00-442750-00004	Plate – Cover Frame .....	2
19	00-442750-00012	Conduit – Flex .....	1
20	00-442750-00013	Connector – Conduit 90 Deg. ....	1



**51A LEG UNIT  
(ML-26248)**

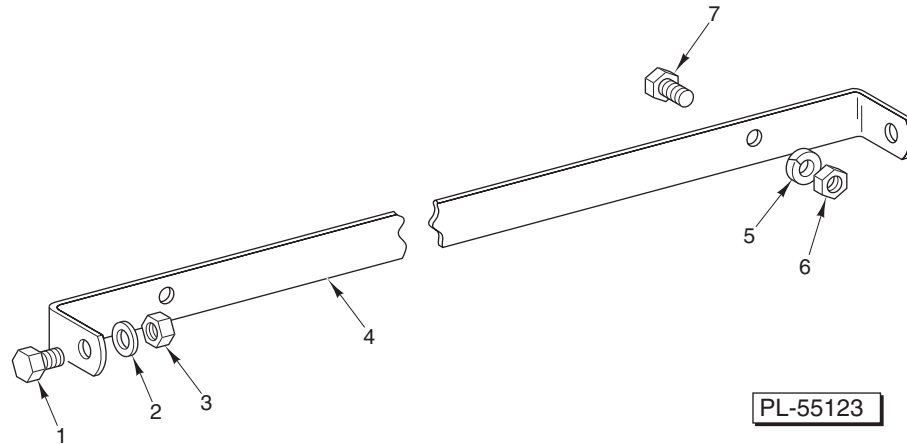
ILLUS.	PART NO.	NAME OF PART	AMT.
PL-55121			
1	00-130399	Leg Assy. ....	1
2	NS-013-14	Nut <sup>5</sup> / <sub>16</sub> -18 Hex .....	2
3	SC-062-59	Cap Screw <sup>5</sup> / <sub>16</sub> -18 x <sup>5</sup> / <sub>8</sub> Hex Hd. ....	2
4	SC-062-59	Cap Screw <sup>5</sup> / <sub>16</sub> -18 x <sup>5</sup> / <sub>8</sub> Hex Hd. ....	2
5	WS-005-42	Washer .....	2
6	00-130398	Brace – Leg .....	2
7	NS-013-14	Nut <sup>5</sup> / <sub>16</sub> -18 Hex .....	2
8	WS-005-42	Washer .....	2
9	SC-062-59	Cap Screw <sup>5</sup> / <sub>16</sub> -18 x <sup>5</sup> / <sub>8</sub> Hex Hd. ....	2
10	00-130397	Extension – Leg .....	2



PL-55122

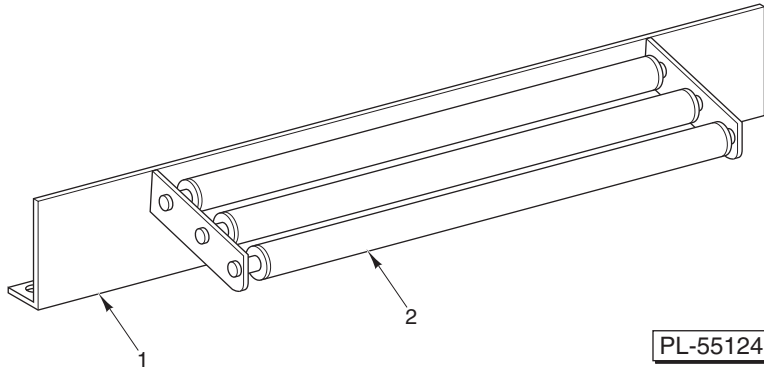
**52A SEALER SUPPORT  
(ML-26246)**

ILLUS.	PART NO.	NAME OF PART	AMT.
PL-55122			
1	00-130583	Pad – Clamp .....	1
2	SC-037-84	Cap Screw 1/4-20 x 1 1/2 Hex Hd. ....	2
3	00-130586	Support .....	1
4	SC-118-19	Cap Screw 1/4-20 x 3/4 Hex Hd. ....	1
5	WS-017-25	Washer .....	1
6	SC-036-14	Cap Screw 1/4-20 x 1/2 Hex Hd. ....	1
7	00-130584	Bar – Support .....	1
8	SC-118-15	Cap Screw 1/4-20 x 1 3/4 Hex Hd. ....	2
9	00-130583	Pad – Clamp .....	1



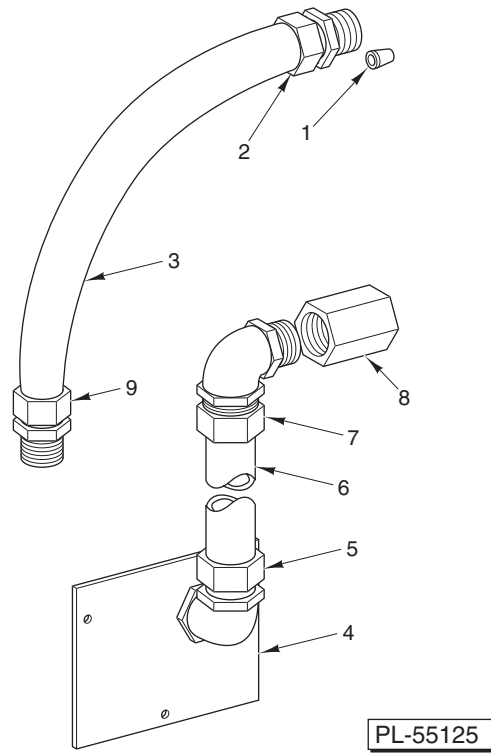
**61A CONVEYOR SUPPORT  
(ML-26263)**

ILLUS.	PART NO.	NAME OF PART	AMT.
PL-55123			
1	SC-110-12	Cap Screw 1/4-20 x 5/8 Hex Hd. ....	2
2	WL-003-38	Lockwasher 1/4 Medium .....	2
3	NS-013-02	Nut 1/4-20 Hex .....	2
4	00-130430	Bracket – Connecting .....	1
5	WL-003-38	Lockwasher 1/4 Medium .....	2
6	NS-013-02	Nut 1/4-20 Hex .....	2
7	SC-110-12	Cap Screw 1/4-20 x 5/8 Hex Hd. ....	2
	ML-026263-0000Z	Conveyor Support Assy. (Incls. Items 1 thru 7) .....	1



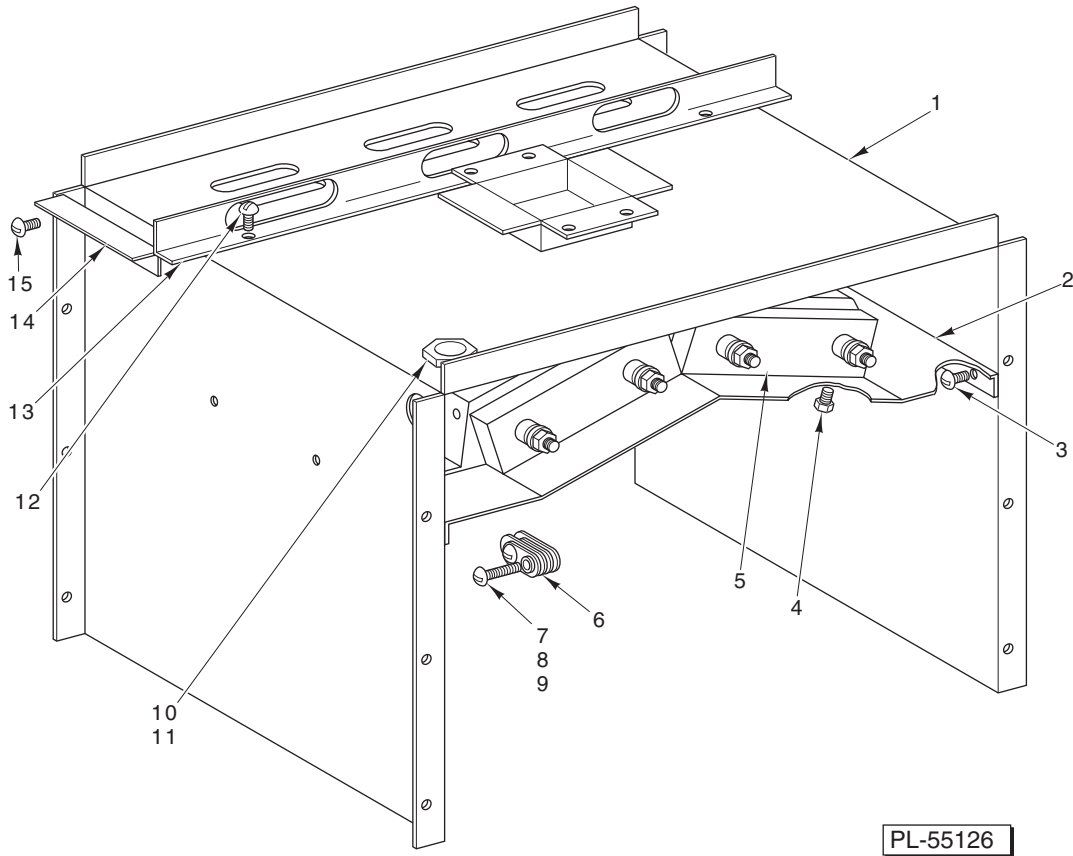
**223A ROLLER DISCHARGE UNIT  
(ML-26245)**

ILLUS.	PART NO.	NAME OF PART	AMT.
PL-55124			
1	00-130610	Discharge Roller Bracket Assy. ....	1
2	00-130439	Roller - Spring .....	3



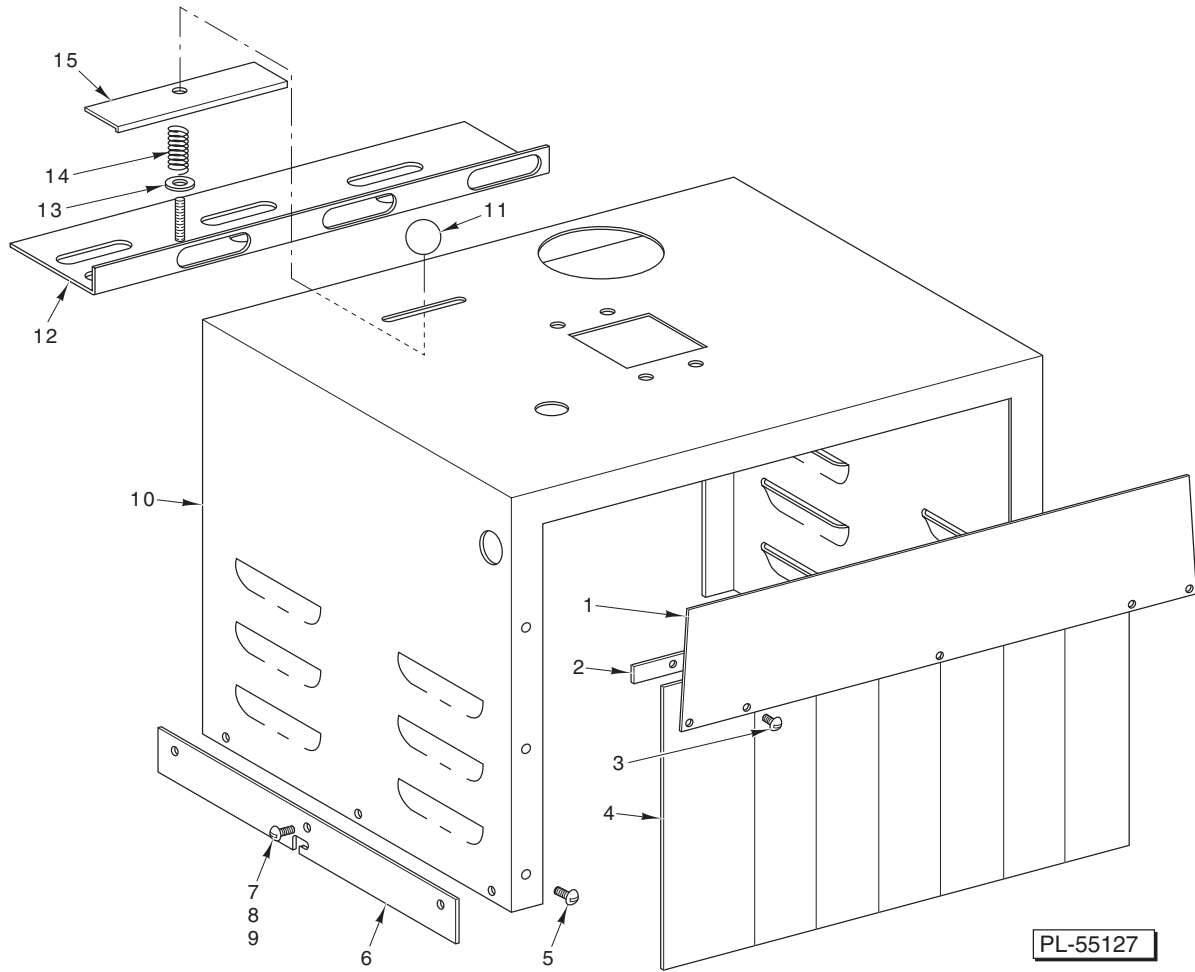
**CONDUIT  
(ML-26241 & ML-26302)**

ILLUS.	PART NO.	NAME OF PART	AMT.
PL-55125			
1	FE-009-34	Wire Nut .....	3
2	FE-006-45	Connector-Str. 1/2 (Thinwall) .....	1
3	00-130487	Conduit - 1/2 In. (Thinwall) .....	1
4	00-133192	Cover - Switch Box End .....	1
5	FE-016-21	ELL - 90 Degree Short (1/2 Male Thd. x 1/2 Thinwall) .....	1
6	00-130497	Conduit (Thinwall) .....	1
7	FE-016-21	ELL - 90 Degree Short (1/2 Male Thd. x 1/2 Thinwall) .....	1
8	00-130538	Bushing - Electrical .....	1
9	FE-006-45	Connector-Str. 1/2 (Thinwall) .....	1



**FRAME AND HEATERS  
(ML-26241 & ML-26302)**

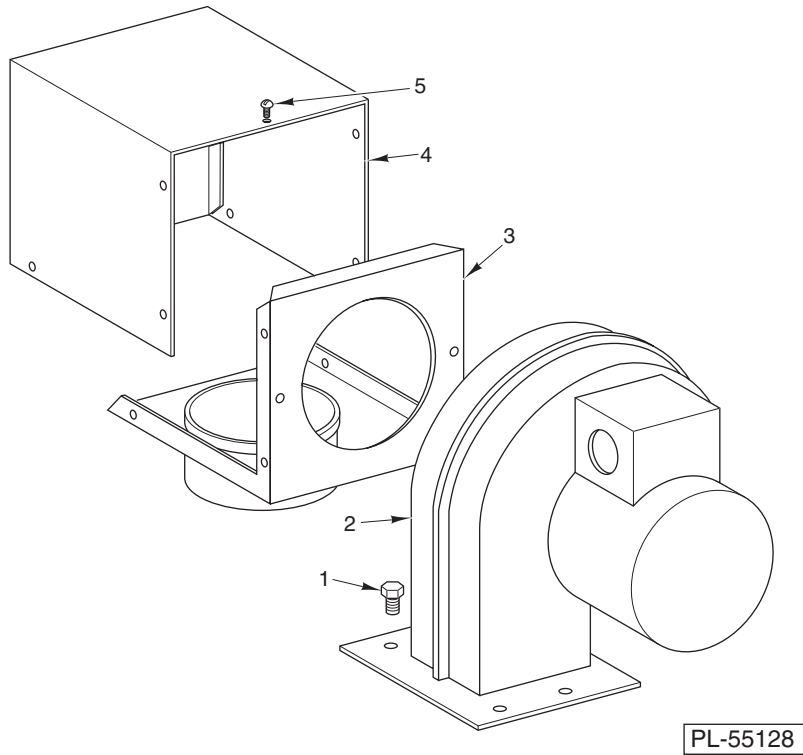
ILLUS.	PART NO.	NAME OF PART	AMT.
PL-55126			
1	00-130453	Frame Assy. ....	1
2	00-130464	Baffle Assy. ....	1
3	SD-012-25	Self-Tapping Screw 8-32 x 3/8 Truss Hd., Type T ....	6
4	SD-014-19	Self-Tapping Screw 10-32 x 3/8 Pan Hd., Type D ....	4
5	00-087005	Element – Heating ....	2
6	00-129272	Thermostat (120-240 V., 60 Hz., 1 Ph.) ....	AR
7	SC-060-41	Mach. Screw 8-32 x 7/8 Rd. Hd. ....	AR
8	WL-003-12	Lockwasher #8 Medium ....	AR
9	NS-009-12	Nut 8-32 Hex ....	AR
10	FE-009-41	Conduit Nipple 1/2 Hex ....	1
11	FE-006-07	Lock Nut 1/2 (Cnd.) ....	1
12	SD-012-25	Self-Tapping Screw 8-32 x 3/8 Truss Hd., Type T ....	2
13	00-130454	Plate – Air Control ....	1
14	00-130455	Flap ....	2
15	SD-012-25	Self-Tapping Screw 8-32 x 3/8 Truss Hd., Type T ....	4



**HOUSING UNIT  
(ML-26241 & ML-26302)**

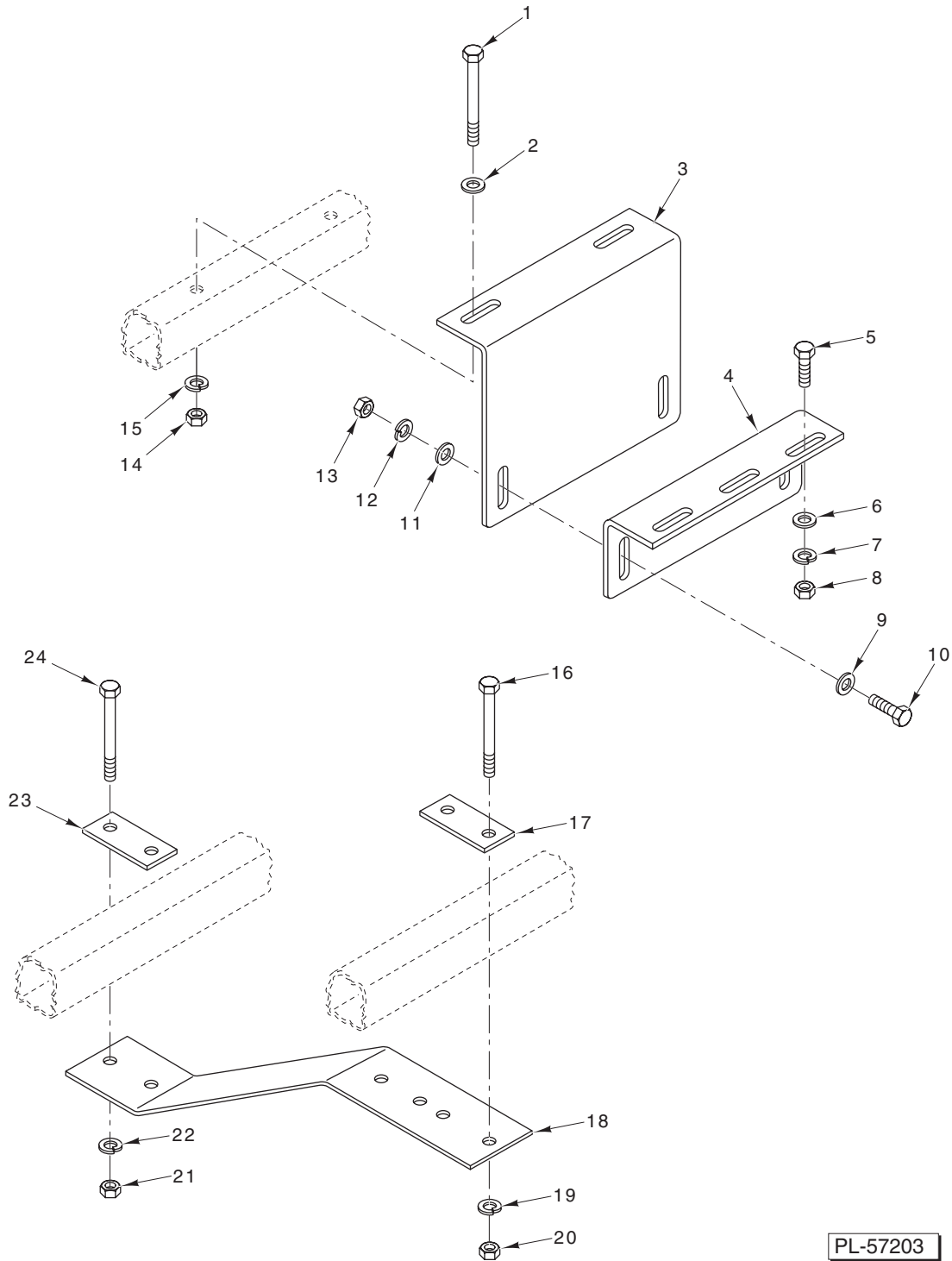
ILLUS.	PART NO.	NAME OF PART	AMT.
	PL-55127		
1	00-130491	Cover .....	2
2	00-130493	Plate – Curtain Mounting .....	2
3	SD-012-25	Self-Tapping Screw 8-32 x 3/8 Truss Hd., Type T .....	6
4	00-130492	Curtain .....	2
5	SD-012-25	Self-Tapping Screw 8-32 x 3/8 Truss Hd., Type T .....	12
6	00-130485	Support – Connecting .....	2
7	SC-009-49	Mach. Screw 6-32 x 3/8 Rd. Hd. ....	6
8	WL-003-09	Lockwasher #6 Medium .....	6
9	NS-010-06	Nut 6-32 Hex .....	6
10	00-130476-00002	Cover – Outside .....	1
11	00-088712	Knob – Air Control .....	1
12	00-130456	Sliding Air Control Assy. ....	1
13	WS-005-42	Washer .....	2
14	00-130804	Spring – Air Control .....	1
15	00-130458	Cover – Knob .....	1
	00-130490	Cover & Curtain Assy. (Incls. Items 1, 2, 3, & 4) .....	2





**BLOWER UNIT  
(ML-26241 & ML-26302)**

ILLUS.	PART NO.	NAME OF PART	AMT.
PL-55128			
1	SC-090-30	Cap Screw 1/4-28 x 3/8 Hex Hd. ....	4
2	00-130477	Blower Motor Assy. ....	1
3	00-130478	Damper Box Assy. ....	1
4	00-130481	Top - Damper Box ....	1
5	SD-008-21	Self-Tapping Screw 6-20 x 3/16 Rd. Hd., Type B ....	7
	00-130463	Blower Assy. (Incls. Items 2, 3, 4, & 5) ....	1



PL-57203

**W3-2/SP-5 CONNECTING PARTS**

**W3-2/SP-5 CONNECTING PARTS**

ILLUS. PL-57203	PART NO.	NAME OF PART	AMT.
1	SC-041-08	Cap Screw 1/4-20 x 2 Hex Hd. ....	2
2	WS-031-37	Washer .....	2
3	00-442483	Bracket – Mounting (Long) .....	1
4	00-442484	Bracket – Mounting .....	1
5	SC-113-26	Mach. Screw 1/4-20 x 5/8 Hex Hd. ....	2
6	WS-031-37	Washer .....	2
7	WL-006-07	Lockwasher 1/4 Medium .....	2
8	NS-015-01	Nut 1/4-20 Hex .....	2
9	WS-031-37	Washer .....	2
10	SC-113-26	Mach. Screw 1/4-20 x 5/8 Hex Hd. ....	2
11	WS-031-37	Washer .....	2
12	WL-006-07	Lockwasher 1/4 Medium .....	2
13	NS-015-01	Nut 1/4-20 Hex .....	2
14	NS-015-01	Nut 1/4-20 Hex .....	2
15	WL-006-07	Lockwasher 1/4 Medium .....	2
16	SC-041-08	Cap Screw 1/4-20 x 2 Hex Hd. ....	2
17	00-442488	Bracket – Support .....	1
18	00-442487	Bracket – Connecting .....	1
19	WL-006-07	Lockwasher 1/4 Medium .....	2
20	NS-015-01	Nut 1/4-20 Hex .....	2
21	NS-015-01	Nut 1/4-20 Hex .....	2
22	WL-006-07	Lockwasher 1/4 Medium .....	2
23	00-442488	Bracket – Support .....	1
24	SC-041-08	Cap Screw 1/4-20 x 2 Hex Hd. ....	2

**MISCELLANEOUS**

<b>PART NO.</b>	<b>NAME OF PART</b>	<b>AMT.</b>
00-334289	Terminal – Spade ¼ (Hi-Temp) .....	AR
00-086951	Terminal – Ring #8 (Hi-Temp) .....	AR
00-127691	Terminal – Ring #10 (Hi-Temp) .....	AR
00-332204-00001	Wire – Black 14 Ga. (Hi-Temp, 10 Ft.) .....	AR
00-332204-00002	Wire – Black 14 Ga. (Hi-Temp, 20 Ft.) .....	AR
00-332204-00003	Wire – Black 14 Ga. (Hi-Temp, 50 Ft.) .....	AR
00-332205-00001	Wire – White 14 Ga. (Hi-Temp, 10 Ft.) .....	AR
00-332205-00002	Wire – White 14 Ga. (Hi-Temp, 20 Ft.) .....	AR
00-332205-00003	Wire – White 14 Ga. (Hi-Temp, 50 Ft.) .....	AR

**RECOMMENDED SPARE PARTS LIST**

<b>PART NO.</b>	<b>NAME OF PART</b>	<b>AMT.</b>
00-032908	Thermal Protector .....	AR
00-044352	Thermostat (450 F.) .....	AR
00-046210	Element (120 V.) (1000 W.) .....	AR
00-087017	Element (120 V.) (700 W.) .....	AR
00-130594	Motor (208-240 V., 60 Hz., 1 Ph.) .....	AR
00-442761-00001	Belt – Conveyor (White) .....	AR
00-442761-00002	Belt – Conveyor (Red) .....	AR
00-442761-00003	Belt – Conveyor (Black) .....	AR