



CATALOG OF REPLACEMENT PARTS

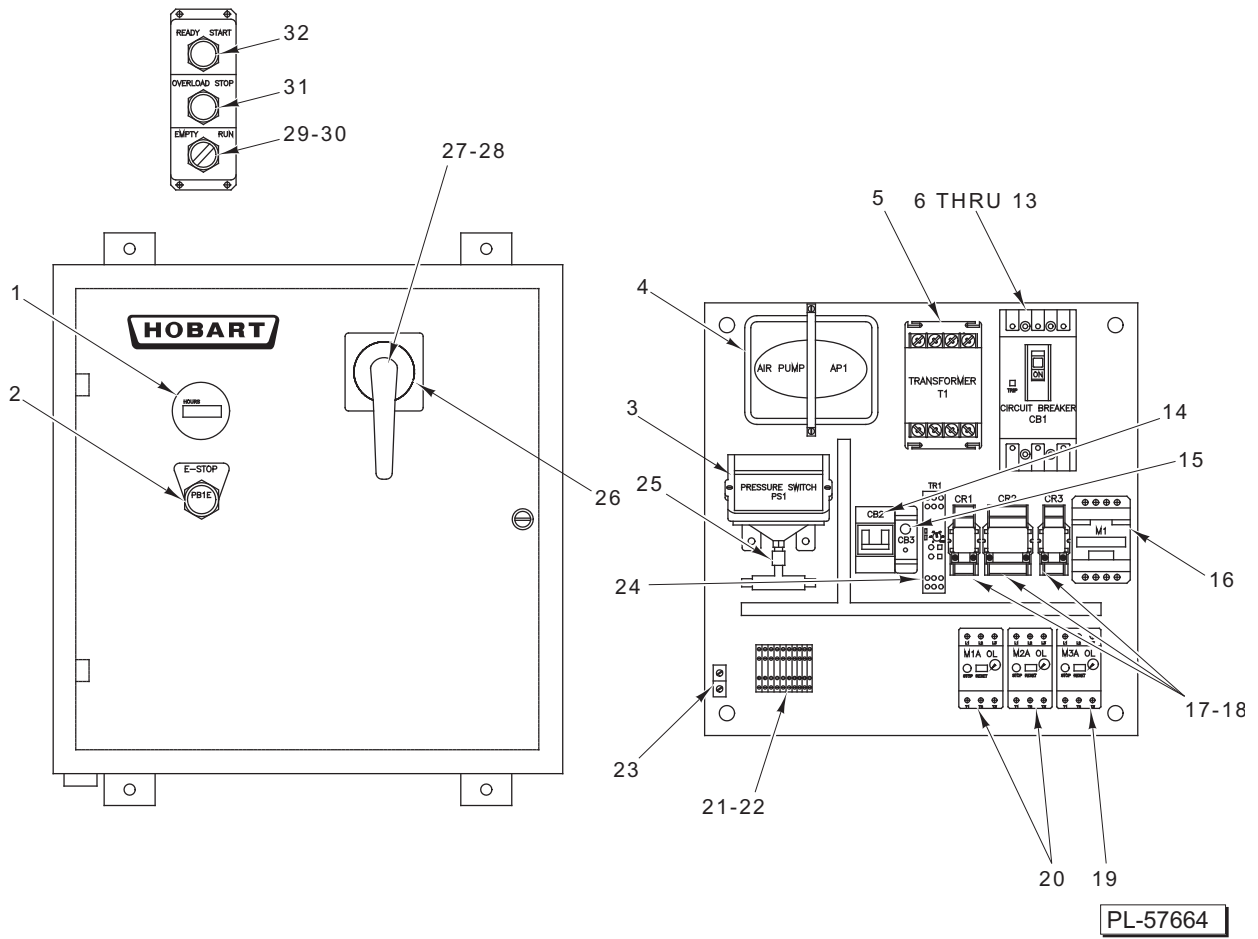


WASTEPRO™

WPS1200	ML-130046
WPR1200	ML-130047
WP6	ML-130048
WP9	ML-130049

Table of Contents

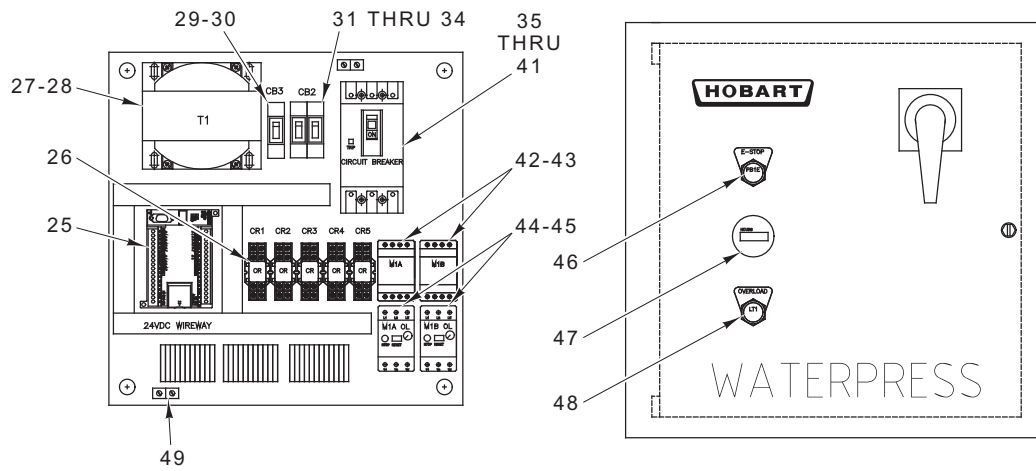
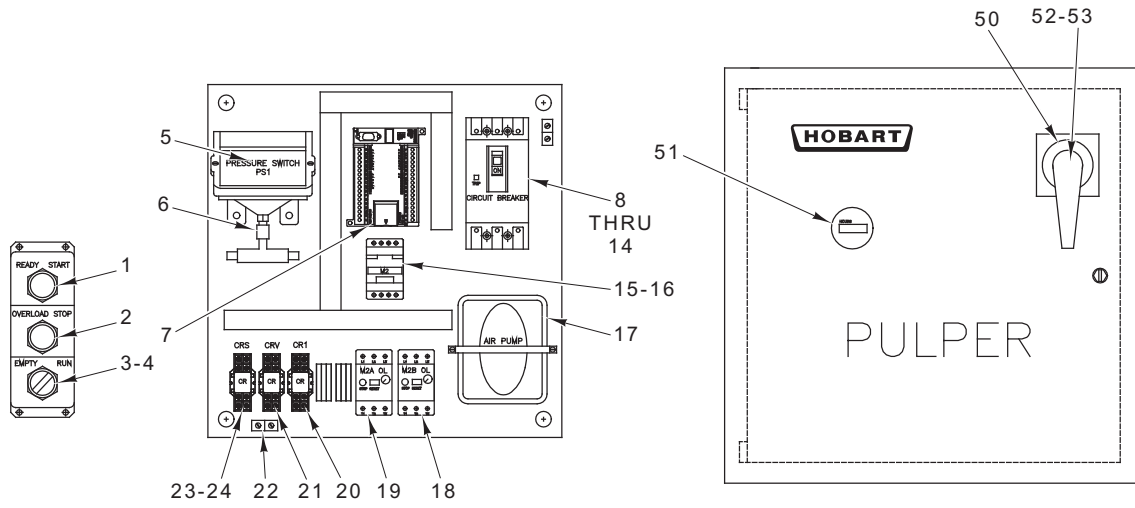
5	CONTROL PANEL (ML-130046)
7	CONTROL PANEL (ML-130047, ML-130048, & ML-130049)
9	CUTTING AND PUMPING MECHANISM
11	WATERPRESS (ML-130046)
13	WATER INLET AND RETURN (ML-130046)
15	WATERPRESS FRAME (ML-130048)
17	PULPER (ML-130046 & ML-130047)
19	RETURN WATER PUMP (ML-130046 & ML-130048)
21	WATERPRESS (ML-130048)
23	WATERPRESS – UPPER SECTION (ML-130049)
25	WATERPRESS – LOWER SECTION (ML-130049)
27	WATER INLET (ML-130048 & ML-130049)
28	WATER RETURN (ML-130048 & ML-130049)



CONTROL PANEL (ML-130046)

CONTROL PANEL (ML-130046)

ILLUS.	PART NO.	NAME OF PART	AMT.
	PL-57664		
1	00-316077	Meter – Hour (Round).....	1
2	00-316099	Button – E-Stop	1
3	00-316198	Switch – Pressure	1
4	00-316078	Pump – Air	1
5	00-316148	Transformer (350 VA; 208, 230, & 480).....	1
6	00-316085	Circuit Breaker – Main (15 Amp.).....	1
7	00-316086	Circuit Breaker – Main (20 Amp.).....	1
8	00-316087	Circuit Breaker – Main (25 Amp.).....	1
9	00-316088	Circuit Breaker – Main (30 Amp.).....	1
10	00-316089	Circuit Breaker – Main (35 Amp.).....	1
11	00-316090	Circuit Breaker – Main (40 Amp.).....	1
12	00-316091	Circuit Breaker – Main (45 Amp.).....	1
13	00-316081	Circuit Breaker (208, 230; 2-Pole)	1
14	00-316149-00002	Circuit Breaker (4 Amp., 1-Pole)	1
15	00-316149	Circuit Breaker (4 Amp., 1-Pole).....	1
16	00-316096	Contactora (50 Amp.).....	1
17	00-316094	Relay – Control (2-Pole)	1
18	00-316150	Relay – Control (4-Pole)	1
19	00-316097	Overload – Adjustable (1.5 - 6 Amp.).....	1
20	00-936897	Overload – Adjustable (6 - 25 Amp.).....	1
21	00-316184	Terminal (2-Pole)	1
22	00-316165	Terminal (1-Pole)	1
23	00-316151	Lug – Ground	1
24	00-316152	Timer.....	1
25	00-316075	Snubber	1
26	00-936869	Circuit Breaker – Linkage	1
27	00-941208	Handle – Control Box.....	1
28	00-941209	Handle – Shaft	1
29	00-316073	Switch – Empty/Run (Previous Construction).....	1
30	00-936875	Switch – Empty/Run (Current Construction).....	1
31	00-316072	Button – Push (Stop)	1
32	00-316071	Button – Push (Start)	1
	00-941204	Overload (3 - 12 Amp.)	1
	00-316166	Rail (Dinrail).....	AR
	00-936865	Contactora – Auxiliary (4-Pole).....	1
	00-936866	Contactora – Auxiliary (2-Pole).....	1
	00-936879	DC Power Supply	1
	00-936898	Overload Mount.....	AR
	-	PLC Computer (Contact Technical Service)	1
	00-936899	Fuse (0.5 Amp.)	AR
	00-936900	Fuse (0.25 Amp.)	AR

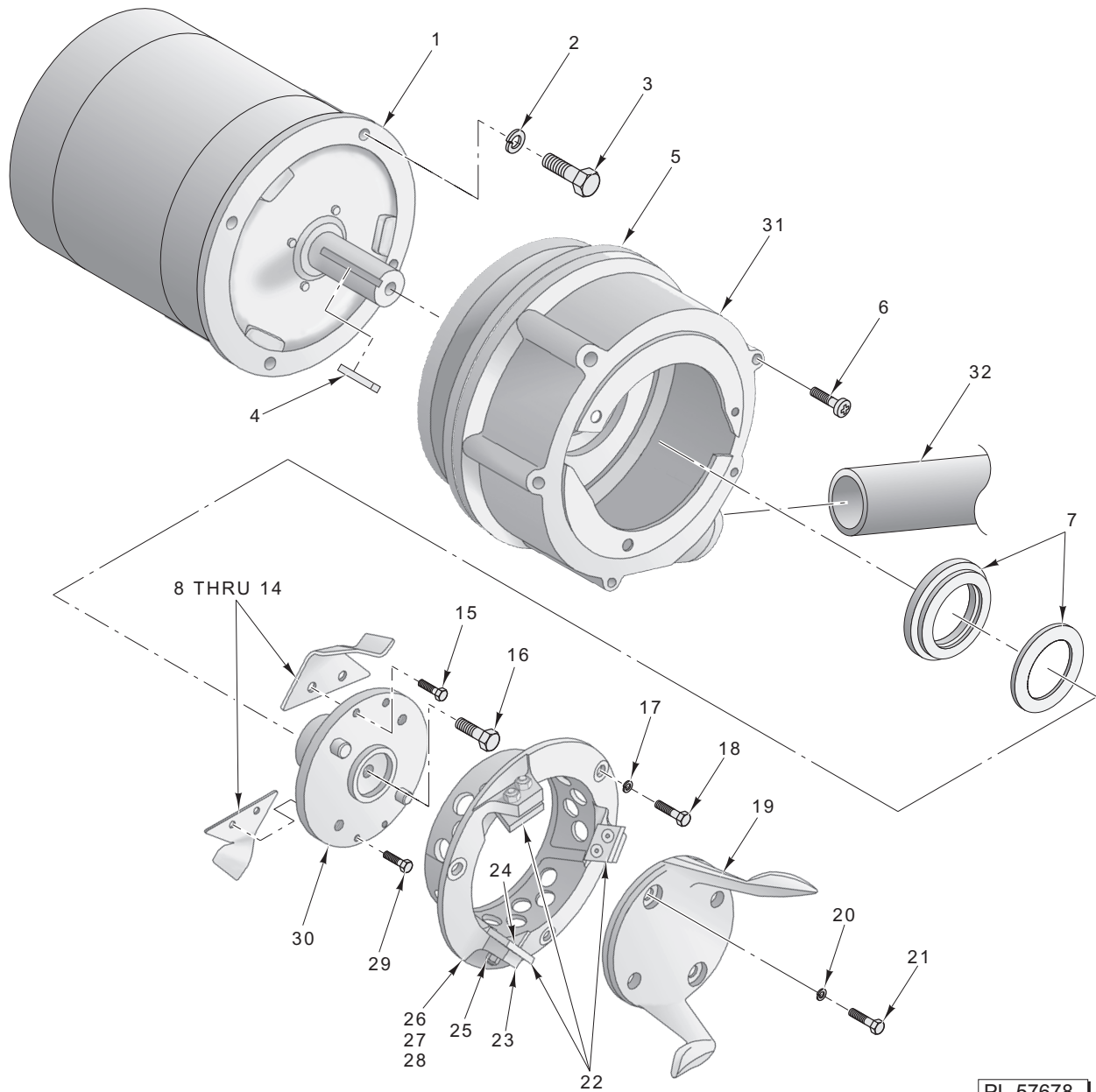


PL-57787

CONTROL PANEL (ML-130047, ML-130048, & ML-130049)

CONTROL PANEL (ML-130047, ML-130048, & ML-130049)

ILLUS.	PART NO.	NAME OF PART	AMT.
PL-57787			
1	00-316071	Button – Push (Start)	1
2	00-316072	Button – Push (Stop)	1
3	00-316073	Switch – Empty/Run (Previous Construction).....	1
4	00-936875	Switch – Empty/Run (Current Construction).....	1
5	00-316198	Switch – Pressure.....	1
6	00-316075	Snubber	1
7	00-316076	PLC (Computer).....	1
8	00-316085	Circuit Breaker – Main (15 Amp.).....	1
9	00-316086	Circuit Breaker – Main (20 Amp.).....	1
10	00-316087	Circuit Breaker – Main (25 Amp.).....	1
11	00-316088	Circuit Breaker – Main (30 Amp.).....	1
12	00-316089	Circuit Breaker – Main (35 Amp.).....	1
13	00-316090	Circuit Breaker – Main (40 Amp.).....	1
14	00-316091	Circuit Breaker – Main (45 Amp.).....	1
15	00-316095	Contactor (25 Amp.).....	1
16	00-316096	Contactor (50 Amp.).....	1
17	00-316078	Pump – Air	1
18	00-316097	Overload – Adjustable (1.5 - 6 Amp.).....	1
19	00-316098	Overload – Adjustable (6 - 25 Amp.).....	1
20	00-316094	Relay – Control (2-Pole).....	1
21	00-316150	Relay – Control (4-Pole).....	1
22	00-316151	Lug – Ground.....	1
23	00-316094	Relay – Control (2-Pole).....	1
24	00-316150	Relay – Control (4-Pole).....	1
25	-	PLC (Computer) (Contact Technical Service).....	1
26	00-316094	Relay – Control (2-Pole).....	AR
27	00-316092	Transformer (2 & 3 on 1).....	1
28	00-316093	Transformer (4 on 1).....	1
29	00-316079	Circuit Breaker (1-Pole, 2 & 3 on 1).....	1
30	00-316080	Circuit Breaker (1-Pole, 4 on 1).....	1
31	00-316081	Circuit Breaker (2-Pole, 2 & 3 on 1) (High Voltage).....	1
32	00-316082	Circuit Breaker (2-Pole, 2 & 3 on 1) (Low Voltage).....	1
33	00-316083	Circuit Breaker (2-Pole, 4 on 1) (High Voltage).....	1
34	00-316084	Circuit Breaker (2-Pole, 4 on 1) (Low Voltage).....	1
35	00-316085	Circuit Breaker – Main (15 Amp.).....	1
36	00-316086	Circuit Breaker – Main (20 Amp.).....	1
37	00-316087	Circuit Breaker – Main (25 Amp.).....	1
38	00-316088	Circuit Breaker – Main (30 Amp.).....	1
39	00-316089	Circuit Breaker – Main (35 Amp.).....	1
40	00-316090	Circuit Breaker – Main (40 Amp.).....	1
41	00-316091	Circuit Breaker – Main (45 Amp.).....	1
42	00-316095	Contactor (25 Amp.).....	1
43	00-316096	Contactor (50 Amp.).....	1
44	00-316097	Overload – Adjustable (1.5 - 6 Amp.).....	1
45	00-316098	Overload – Adjustable (6 - 25 Amp.).....	1
46	00-316099	Button – E-Stop	1
47	00-316077	Meter – Hour (Round).....	1
48	00-316100	Lamp – Overload	1
49	00-316151	Lug – Ground.....	1
50	00-936869	Breaker – Circuit Linkage	1
51	00-316077	Meter – Hour (Round).....	1
52	00-941208	Handle – Control Box.....	1
53	00-941209	Handle – Shaft.....	1
	00-941204	Overload (3 - 12 Amp.).....	1
	00-941205	Switch – Pressure (2-Pole).....	1
	00-316166	Rail (Dinrail).....	1
	00-936899	Fuse (0.5 Amp.).....	AR
	00-936900	Fuse (0.25 Amp.).....	AR
	00-316100	Bulb – Red (Stop Switch).....	1
	00-936895	Bulb – Green (Start Switch).....	1



PL-57678

CUTTING AND PUMPING MECHANISM

CUTTING AND PUMPING MECHANISM

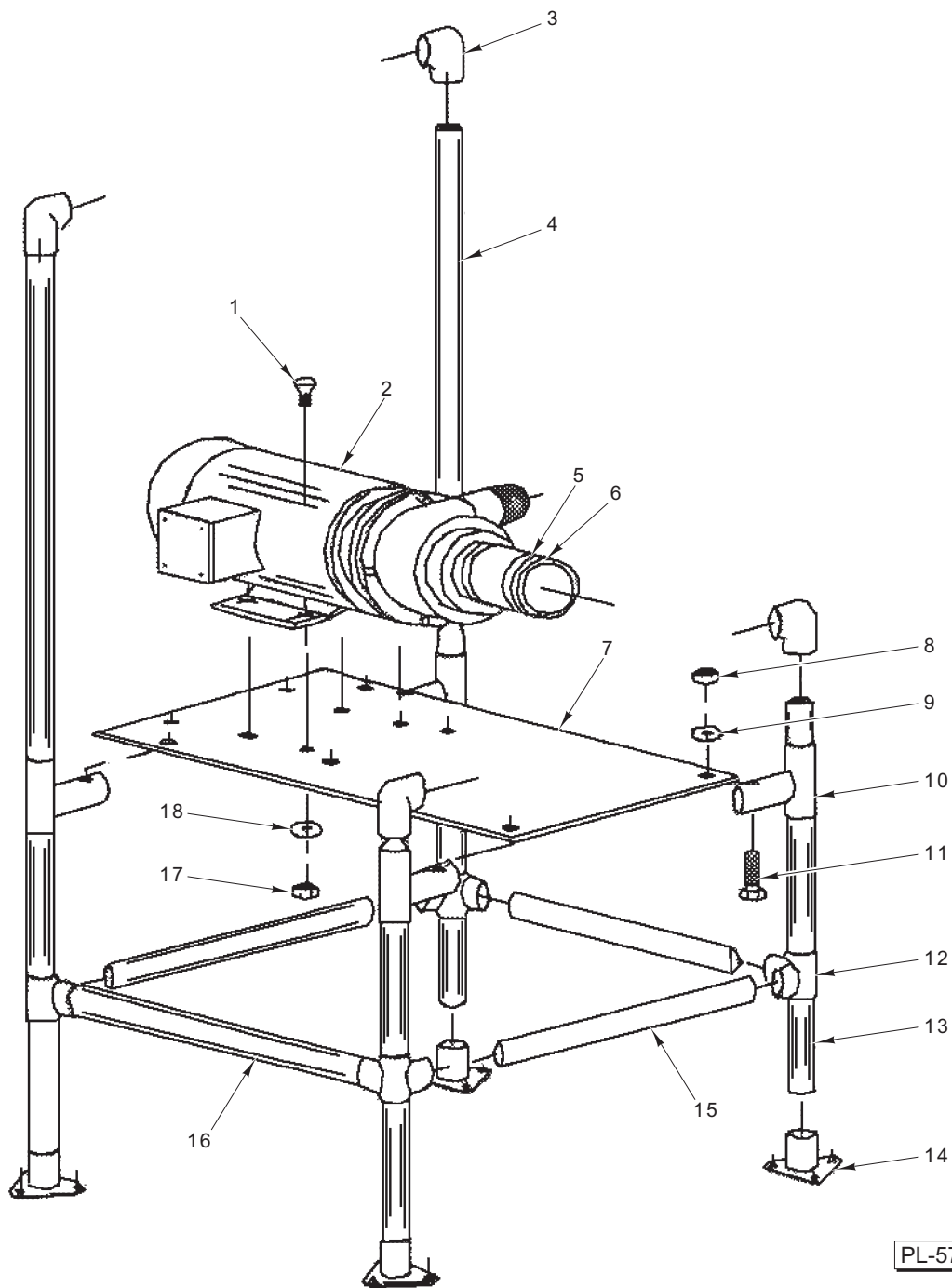
ILLUS. PL-57678	PART NO.	NAME OF PART	AMT.
1	00-316006	Motor – Pulper Drive.....	1
2	-	Lockwasher 1/2 Split (SST).....	4
3	-	Screw 1/2-13 x 1 Hex Hd. (SST).....	4
4	-	Key (1/4 x 1/4 x 1).....	1
5	00-316153	Adapter – Drive (Previous Construction).....	1
6	-	Screw 3/8-16 x 1 Hex Hd.....	4
7	00-316005	Seal – Mechanical.....	1
8	00-316160	Vane – Pumping (Size 0) (Machines Built Prior To 2/22/05).....	2
9	00-316161	Vane – Pumping (Size 1) (Machines Built Prior To 2/22/05).....	2
10	00-316162	Vane – Pumping (Size 2) (Machines Built Prior To 2/22/05).....	2
11	00-316163	Vane – Pumping (Size 3) (Machines Built Prior To 2/22/05).....	2
12	00-316185-00001	Vane – Pumping (Size 1) (Use On WPS1200, MP Pump).....	2
13	00-316185-00002	Vane – Pumping (Size 2) (Machines Built On Or After 2/22/05) (Use on WPR1200).....	2
14	00-316185-00003	Vane – Pumping (Size 3) (Machines Built On Or After 2/22/05) (Use on WPS1200, KW Pump).....	2
15	-	Screw 5/16-24 x 1/2 Hex Hd.....	2
16	-	Screw 3/8-16 x 1 Hex Hd. (SST).....	1
17	-	Lockwasher.....	3
18	-	Screw 3/8-24 x 1/2 Hex Hd. (SST).....	3
19	00-316000	Blade – Rotating.....	1
20	-	Lockwasher.....	2
21	-	Screw 3/8-24 x 1/2 (SST).....	2
22	-	Shim.....	3
23	00-936904	Cutter – Carbide Stationary.....	3
24	-	Lock Nut 1/4-20 (SST).....	6
25	-	Screw 1/4-20 x 1 Flat Hd. (SST).....	6
26	00-316001	Ring – Sizing (Machines Built On Or After 2/22/05).....	1
27	00-316183-00002	Kit – Sizing Ring (Incls. Items 13, 26, & 30) (Machines Built Prior To 2/22/05).....	1
28	00-316183-00003	Kit – Sizing Ring (Incls. Items 14, 26, & 30) (Machines Built Prior To 2/22/05).....	1
29	-	Screw 5/16-24 x 1/2 Hex Hd.....	2
30	00-316003	Impeller (Machines Built On Or After 2/22/05).....	1
31	00-936909	Gasket – Drive (Between Adapter & Tank).....	1
32	00-316190	Hose – Slurry.....	1
	00-941207	Slurry Chamber.....	1

WATERPRESS (ML-130046)

ILLUS. PL-57676	PART NO.	NAME OF PART	AMT.
1	-	Bolt 3/4-16 x 1 1/4 Hex Hd. (SST).....	1
2	00-316154	Washer.....	1
3	00-316020	Reducer 2 Hp.....	1
4	-	Nut 3/8-16 Hex (SST).....	4
5	-	Lockwasher 3/8 In. I.D. (SST).....	4
6	-	Nut 10-32 Hex Elastic Stop (SST).....	2
7	-	Mach. Screw 3/8-16 x 1 1/4 Hex Hd. (SST).....	4
8	-	Screw 10-32 x 3/4 Rd. Hd. (SST).....	2
9	-	Nut 10-32 Hex Elastic Stop (SST).....	2
10	-	Washer #10.....	2
11	00-316038	Chute – Discharge.....	1
12	00-316013	Magnet – High Energy.....	1
13	-	Screw 6-32 x 2 1/4 Rd. Hd. (SST).....	2
14	00-316012	Switch – Magnetic.....	1
15	-	Screw 5/16-18 x 1/2 Hex Hd. (SST).....	4
16	-	Nut 3/8-16 Hex (SST).....	4
17	-	Lockwasher 5/16 In. I.D. (SST).....	4
18	00-316022	Head Assy. & Shell Weldment (SST).....	4
19	00-316007	Isolator – Vibration.....	2
20	-	Washer 3/8 In.	6
21	-	Nut 3/8-16 Hex (SST).....	6
22	00-316007	Pad – Vibration.....	1
23	00-316032	Leg.....	2
24	-	Mach. Screw 1/2-13 x 1 Hex Hd. (SST).....	1
25	-	Washer 1/2 In.	1
26	00-316036	Plate – Bottom Pin.....	1
27	00-316035	Gasket – Bottom Plate.....	1
28	00-316034	Pin – Bottom.....	1
29	00-316030	Cover – Access.....	1
30	00-316031	Fastener – Lid.....	1
31	00-316155	Pump – Chemical Additive (Steiner).....	1
32	-	Bolt 3/8-16 x 3/4 Hex Hd. (SST).....	4
33	-	Lockwasher 3/8 In. I.D. (SST).....	4
34	00-316019	Motor – Drive 2 Hp.....	1
35	-	Key 3/16 In. x 3/16 In. x 1 5/8 In. Lg.....	1
36	-	Nut 3/8-16 Hex (SST).....	4
37	-	Lockwasher 3/8 In. Split Type (SST).....	4
38	00-316026	Cutter – Plug (Two-Piece) (Adjustable) (Previous Construction).....	1
39	-	Mach. Screw 3/8-16 x 1 1/2 Hex Hd. (SST).....	4
40	-	Key 3/8 In. x 3/8 In. x 3 In. Lg.	1
41	-	Screw 5/16-18 x 1 Button Hd. Socket Type (SST).....	2
42	-	Lockwasher 5/16 In. I.D. Split Type (SST).....	2
43	-	Nut 5/16-18 Hex (SST).....	2
44	00-316023	Screen Assy.	1
45	00-316024	Screw Assy. – Extractor (Incls. Items 40, 46, & 47).....	1
46	00-316025	Brush (Nylon).....	1
47	00-316027	Bushing – Lower (Screw Shaft).....	1
48	00-316156	Nozzle 1/4 In.....	8
49	-	Nozzle Elbow – Street 1/4 45 Deg.....	8

WATER INLET AND RETURN (ML-130046)

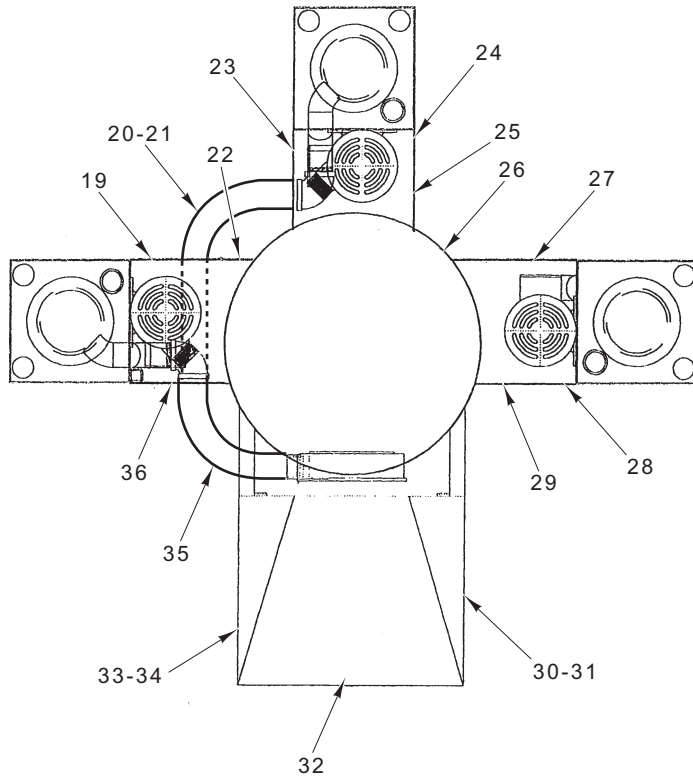
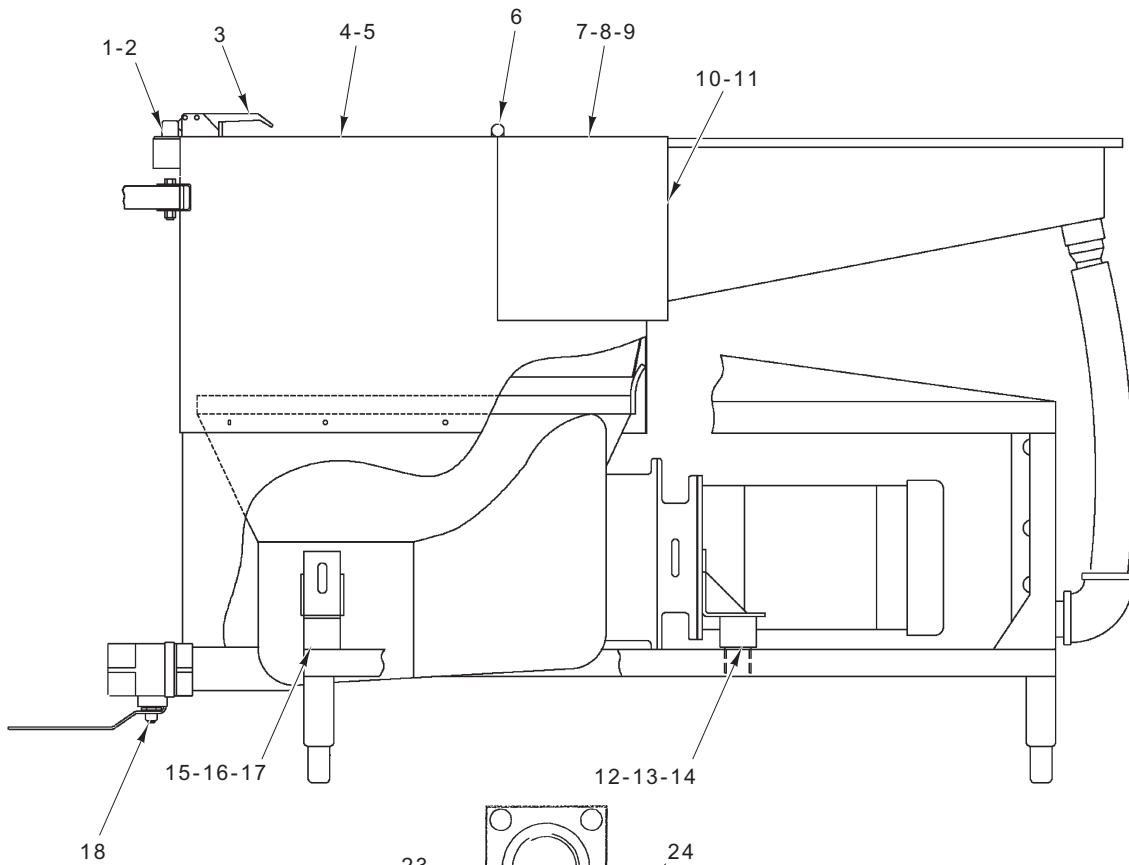
ILLUS. PL-57712	PART NO.	NAME OF PART	AMT.
1	-	Hose – Cold Water (3/4 In. x 40 In. Lg.) (From Overflow Plate To Drain).....	1
2	-	Hose – Cold Water (3/4 In. x 11 In. Lg.) (To Overflow Plate).....	1
3	00-316015	Preventor – Backflow (1/2 In.).....	2
4	00-316188-00006	Fitting	1
5	00-316188-00001	Fitting – Check Valve	1
6	00-316188-00002	Fitting – Airline Elbow	1
7	00-316188-00004	Fitting – Elbow (1/2 NBT x 3/8 In.)	1
8	00-316188-00003	Fitting – Backflow Preventor.....	1
9	00-316015	Preventor – Backflow (1/2 In.).....	2
10	00-316016	Arrestor – Shock (1/2 In.)	2
11	00-316017	Valve – Solenoid (1/2 In.) (Incls. Item 13).....	2
12	-	Hose – Hot Water (3/4 In.) (To Waterpress Screen Flush).....	1
13	00-316017	Solenoid Valve (1/2 In.) – Hot Water Inlet (Incls. Item 11).....	1
14	00-316016	Arrestor – Shock (1/2 In.)	2
15	00-316017	Valve – Solenoid (1/2 In.) (Cold Water Inlet) (Incls. Item 17).....	1
16	00-316158	Hose (1 1/2 In.) (To End Plate).....	1
17	00-316017	Valve – Solenoid (1/2 In.) (Incls. Item 15).....	2
18	00-316159	Plate – Overflow	1
19	00-316164	Terminal Strip (Gray Block).....	1
20	00-316165	Terminal Strip (Black Block).....	1
21	-	Hose (3/4 In. x 5 In. Lg.) (To Silver Saver)	1
22	00-316158	Hose (1 1/2 In.) (From Waterpress).....	1
23	00-936896	Barb – Hose (1/2 In. to 3/4 In.).....	1
24	00-936893	Bushing – Reducer (1 In. to 1/2 In.).....	1
	00-936880	Valve – Solenoid (1/2 In.) (Parker)	1
	00-936881	Valve – Solenoid (3/4 In.) (Parker)	1



WATERPRESS FRAME (ML-130048)

WATERPRESS FRAME (ML-130048)

ILLUS. PL-57674	PART NO.	NAME OF PART	AMT.
1	-	Screw ⁵ / ₁₆ -18 x ³ / ₄ Hex Hd.....	4
2	-	Pump (See Page 18 & 19).....	1
3	00-316060	Fitting – Speed Rail No. 3 (1 NPS).....	4
4	-	Pipe 1 NPS, SCH 40, 50 ³ / ₈ In. Lg. (Alum.).....	2
5	00-316058	Hose 2 ⁷ / ₈ In. ID x 4 In. Lg.....	1
6	00-316059	Clamp #QS200M-48S (SST).....	2
7	00-316061	Plate – Pump Mounting.....	1
8	-	Nut ³ / ₈ -16 Hex.....	4
9	-	Lockwasher ³ / ₈ Split Type.....	4
10	00-316062	Fitting – Swivel 1 NPS.....	4
11	-	Screw ³ / ₈ -16 x 2 ¹ / ₄ Hex Hd.....	4
12	00-316063	Fitting – Speed Rail No. 5 Tec (1 NPS).....	4
13	-	Pipe 24 ⁹ / ₁₆ In. Lg. 1 NPS, SCH 40 (Alum.).....	2
14	00-316064	Flange – Floor 1 NPS.....	4
15	-	Pipe 14 ¹ / ₄ In. Lg. 1 NPS, SCH 40 (Alum.).....	2
16	-	Pipe 16 ¹ / ₂ In. Lg. 1 NPS, SCH 40 (Alum.).....	2
17	-	Nut ⁵ / ₁₆ -18 Hex.....	4
18	-	Lockwasher ⁵ / ₁₆ Split Type.....	4



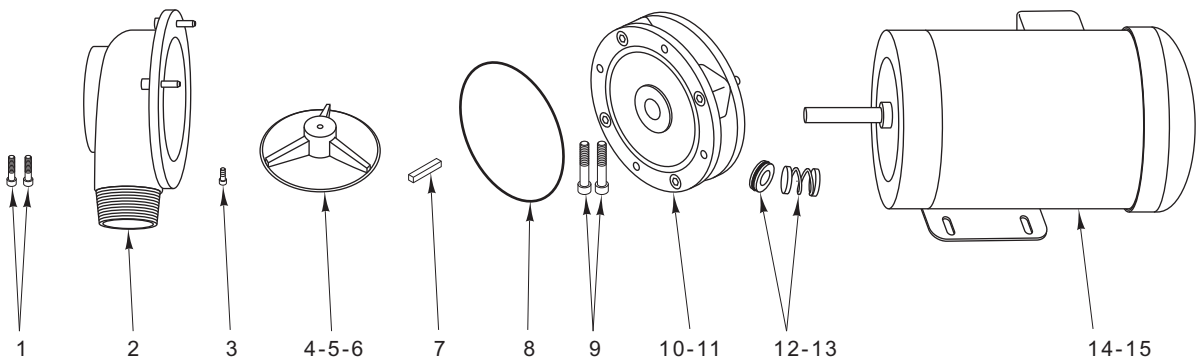
TOP VIEW

PULPER (ML-130046 & ML-130047)

PL-57675

PULPER (ML-130046 & ML-130047)

ILLUS. PL-57675	PART NO.	NAME OF PART	AMT.
1	00-316012	Switch – Limit.....	1
2	00-316186	Bracket – Limit Switch	1
3	00-316008	Latch – Lid	1
4	00-316188-00005	Bumper	1
5	00-316011	Stop – Lid.....	1
6	00-919666	Hinge – Lid	
7	00-316200	Magnet – Retainer Assy. (Hinged Cover).....	1
8	00-316199	Epoxy (Model 654).....	AR
9	00-918903	Switch – Limit (DC Powered).....	1
10	00-316014	Curtain – Tray	1
11	00-316051	Gasket – Tray	1
12	00-316007	Isolator – Vibration (Rubber).....	4
13	-	Nut 3/8-16 Hex (SST).....	4
14	-	Lockwasher 3/8 Split (SST).....	4
15	00-316007	Isolator – Vibration (Rubber).....	4
16	-	Screw 3/8-16 x 1 Hex Hd. (SST).....	4
17	-	Lockwasher 3/8 Split (SST).....	4
18	00-316018	Valve – Drain (2 In.).....	1
19	00-316174	Panel – Without Holes (9 O'clock).....	1
20	00-316191	Hose – Slurry Return (U Shape).....	2
21	00-936894	Elbow – Rubber (90 Deg.)	1
22	00-316175	Panel – Top (9 O'clock).....	1
23	00-316171	Panel (12 O'clock)	1
24	00-316172	Panel – Without Holes (12 O'clock).....	1
25	00-316177	Panel – Top (12 O'clock).....	1
26	00-936886	Lid – Undercounter	1
27	00-316174	Panel – Without Holes (3 O'clock).....	1
28	00-316173	Panel – With Access Hole (3 O'clock)	1
29	00-316176	Panel – Top (3 O'clock).....	1
30	00-316180	Panel – Long Side (RH).....	1
31	00-316181	Panel – Short Side.....	1
32	00-316178	Panel – Motor	1
33	00-316181	Panel – Short Side.....	1
34	00-316179	Panel – Long Side (LH)	1
35	00-316190	Hose – Slurry Return (L Shape).....	2
36	00-316171	Panel (9 O'clock)	1
	00-316137	Magnet – Trough.....	1
	00-316182	Dual – Lok (Velcro)	AR
	00-936907	Kit – Drain Linkage	AR
	00-936882	Valve – Motorized (2 In.).....	1
	00-936902	Actuator – Motor Valve.....	1
	00-316066	Valve – Check (2 In.).....	1
	00-316196	Curtain – Trough (9 In.).....	AR
	00-316197	Curtain – Trough (12 In.).....	AR
	00-936885	Screen – Tank Drain	1
	00-936905	Nozzle – Trough.....	AR
	00-941206	Jam Nut – Trough Nozzle Spacer.....	1
	00-941203	Seal – Tank	1



KW PUMP SHOWN

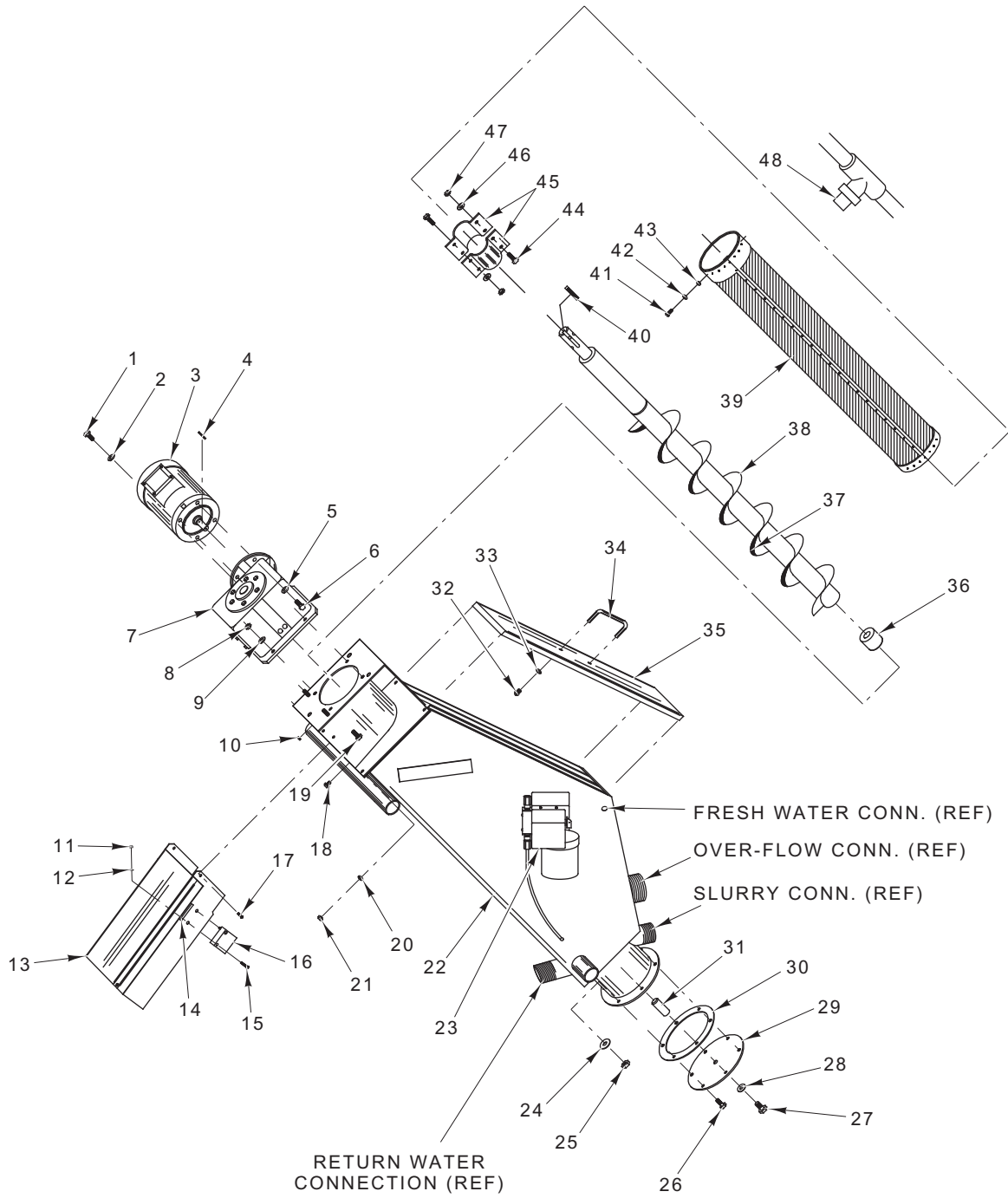
PL-57677

RETURN WATER PUMP (ML-130046 & ML-130048)

RETURN WATER PUMP (ML-130046 & ML-130048)

ILLUS. PL-57677	PART NO.	NAME OF PART	AMT.
*1	-	Screw ⁵ / ₁₆ -18 x ³ / ₄ Socket Hd.	4
*2	00-316039	Housing – Pump (3 Hp. & 5 Hp.) (WPS & WP6)	1
*3	-	Screw 10-32 x ⁵ / ₈ Socket Hd.	1
*4	00-316070	Impeller (3 Hp.) (WPS1200 Only)	1
*5	00-316042	Impeller (3 Hp.) (WP6)	1
*6	00-316041	Impeller (5 Hp.) (WP6)	1
*7	-	Key ³ / ₁₆ In. x ³ / ₁₆ In. x 1 ¹ / ₈ In. Lg.	1
*8	00-316069	O-Ring	1
*9	-	Screw ³ / ₈ -16 x 1 ³ / ₄ Socket Hd.	4
*10	00-316045	Ring – Spacer (2 Hp. & 3 Hp.) (WPS & WP6)	1
*11	00-316044	Ring – Spacer (5 Hp.) (WP6)	1
*12	00-316046	Seal – Mechanical ⁵ / ₈ In. (2 Hp. & 3 Hp.) (WPS & WP6)	1
*13	00-316047	Seal – Mechanical ⁷ / ₈ In. (5 Hp.) (WP6)	1
*14	00-316049	Motor (3 Hp.) (208/230/460/60/3) (WPS & WP6)	1
*15	00-316050	Motor (5 Hp.) (208/230/460/60/3) (WP6 & WP9)	1
*	00-316168	Pump/Motor Assy. (3 Hp.) (208/230/460/60/3) (WP6)	1
*	00-316057	Pump/Motor Assy. (5 Hp.) (208/230/460/60/3) (WPS & WP6)	1
*	00-316056	Pump/Motor Assy. (3 Hp.) (208/230/460/60/3) (WPS)	1
	00-936872	Motor (3 Hp.) (Leeson)	1
	00-936868	Pump (MP) (Incls. Impeller, Sleeve, & Housing)	1
	00-476738-00007	Seal – Mechanical (# Hp. MP Motor)	1

* KW style pump and motor shown.

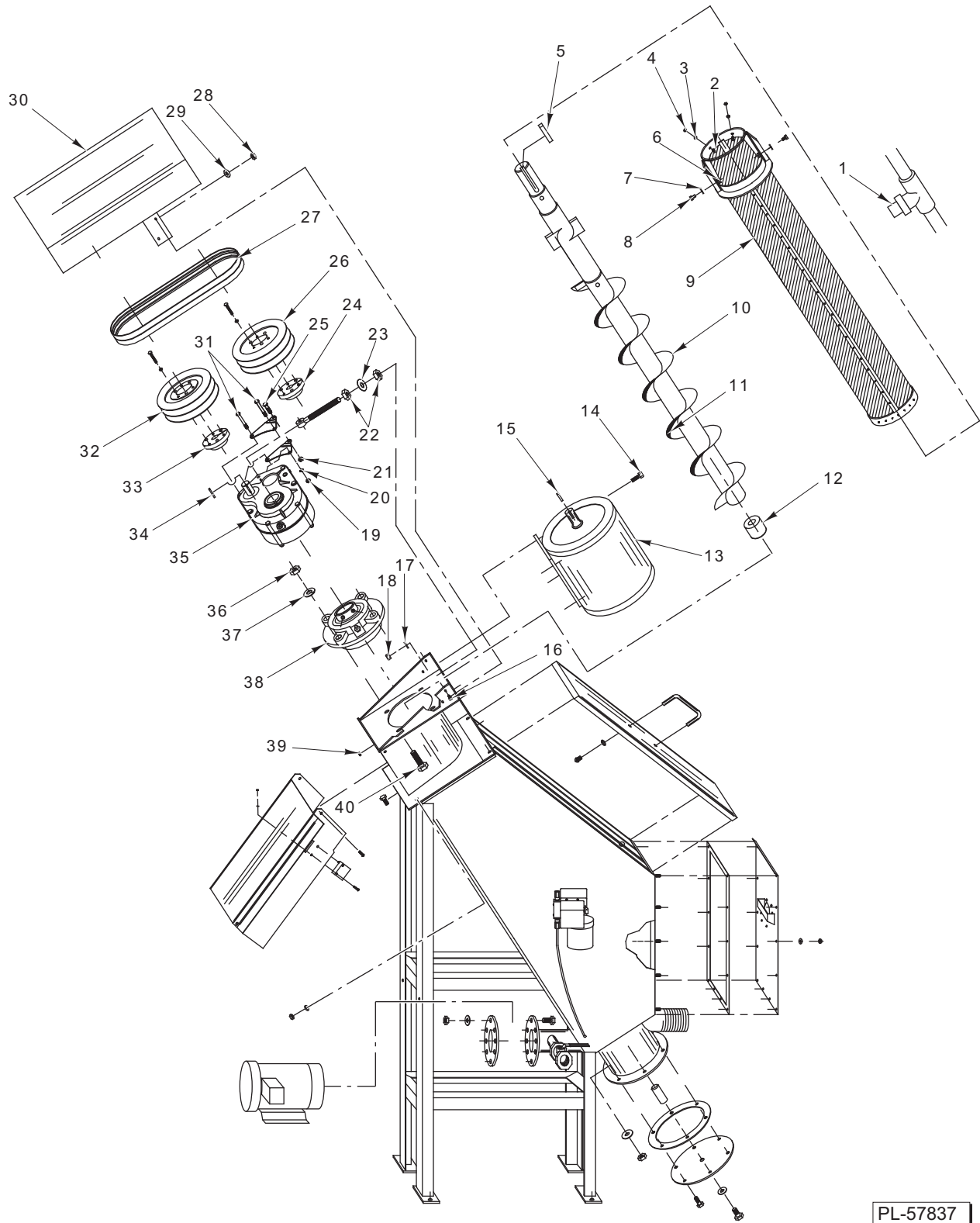


PL-57673

WATERPRESS (ML-130048)

WATERPRESS (ML-130048)

ILLUS.	PART NO.	NAME OF PART	AMT.
	PL-57673		
1	-	Bolt 3/4-10 x 2 1/2 Hex Hd.	1
2	00-316154	Washer.....	1
3	00-316052	Motor – Drive 3 Hp.....	1
4	-	Key 3/16 In. x 3/16 In. x 1 5/8 In. Lg.....	1
5	-	Lockwasher 3/8 Helical.....	4
6	-	Bolt 3/8-16 x 3/4 Hex Hd.	4
7	00-316053	Reducer 3 Hp.....	1
8	-	Nut 3/8-16 Hex	4
9	-	Lockwasher 3/8 Helical.....	4
10	-	Mach. Screw 3/8-16 x 1 1/4 Hex Hd.....	4
11	-	Nut 6-32 Hex Elastic Stop.....	2
12	-	Washer #10.....	2
13	00-316038	Chute – Discharge	1
14	00-316013	Magnet – High Energy	1
15	-	Screw 6-32 x 2 1/4 Rd. Hd. (SST).....	2
16	00-316012	Switch – Magnetic.....	1
17	-	Screw 10-32 x 3/4 Rd. Hd. (SST).....	2
18	-	Screw 5/16-18 x 1/2 Hex Hd. (SST).....	4
19	-	Nut 10-32 Hex Elastic Stop.....	2
20	-	Lockwasher 3/8 Helical (SST).....	4
21	-	Nut 3/8-16 Hex	4
22	00-316054	Head Assy. & Shell Weldment	1
23	00-316155	Pump – Chemical Additive.....	1
24	-	Washer 3/8 In.	6
25	-	Nut 3/8-16 Hex	6
26	-	Mach. Screw 3/8-16 x 1 Hex Hd.....	6
27	-	Mach. Screw 1/2-13 x 1 Hex Hd.....	1
28	-	Washer 3/8 In.	1
29	00-316036	Plate – Bottom Pin	1
30	00-316035	Gasket – Bottom Plate.....	1
31	00-316034	Pin – Bottom	1
32	-	Mach. Screw 10-32 x 1/2 Rd. Hd. (SST).....	2
33	-	Lockwasher #10 Split Type (SST).....	2
34	00-316009	Handle – Lid.....	1
35	00-316055	Cover – Access.....	1
36	00-316027	Bushing – Lower (Screw Shaft)	1
37	00-316025	Brush (Nylon).....	1
38	00-316024	Screw Assy. – Extractor	1
39	00-316023	Screen Assy.	1
40	-	Key 3/8 In. x 3/8 In. x 3 In. Lg.	1
41	-	Screw 5/16-18 x 1 Button Hd. Socket Type (SST)	2
42	-	Lockwasher 5/16 Split Type (SST).....	2
43	-	Nut 5/16-18 Hex (SST).....	2
44	-	Mach. Screw 3/8-16 x 1 1/2 Hex Hd. (SST)	4
45	00-316026	Cutter – Plug (Two-Piece) (Adjustable)	1
46	-	Lockwasher 3/8 Split Type (SST).....	4
47	-	Nut 3/8-16 Hex (SST).....	4
48	00-316156	Nozzle	8

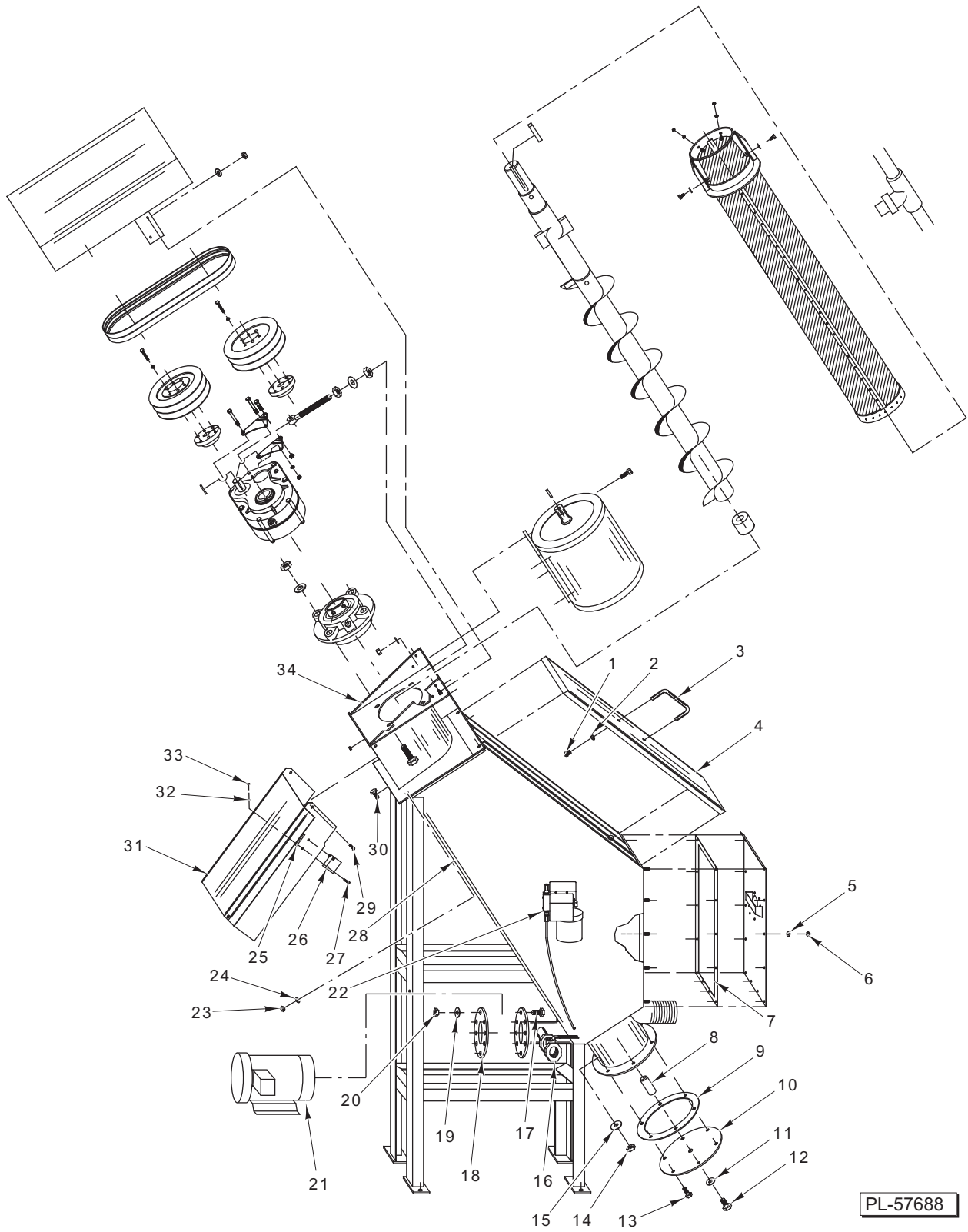


PL-57837

WATERPRESS – UPPER SECTION (ML-130049)

WATERPRESS – UPPER SECTION (ML-130049)

ILLUS.	PART NO.	NAME OF PART	AMT.
PL-57837			
1	00-316156	Nozzle	8
2	-	Screw 3/8-16 x 1 Button Hd.....	2
3	-	Lockwasher 3/8 Helical.....	2
4	-	Nut 3/8-16 Hex	2
5	-	Key – Woodruff 1/2 x 1/4 x 4 1/2.....	1
6	-	Nut 1/2-13 Hex	2
7	-	Lockwasher 1/2 Split Type.....	2
8	-	Screw 1/2-13 x 1 1/4 Hex Hd.	2
9	00-316116	Screen Assy.....	1
10	00-316117	Screw Assy.....	1
11	00-316118	Brush – Helicord Flight (4 1/2 Rev.).....	1
12	00-316119	Bushing – Screw Shaft	1
13	00-316114	Motor – Drive (5 Hp.) (208/230/460 V., 60 Hz., 3 Ph.).....	1
14	-	Screw 3/8-16 x 1 1/4 Hex Hd.	4
15	-	Key – Woodruff 1/2 x 3/8 x 2 1/2.....	1
16	-	Screw 5/16-18 x 1 Hex Hd.	4
17	-	Lockwasher 3/8 Split Type.....	4
18	-	Nut 3/8-16 Hex	4
19	-	Nut 3/8-16 Hex Hd.....	2
20	-	Lockwasher 3/8 Split Type.....	2
21	-	Locknut 3/8-16 Hex Hd.	1
22	-	Nut 5/8-11 Hex.....	2
23	-	Washer 1/2 In.	1
24	00-316109	Bushing – Driven	1
25	-	Bolt 3/8-16 x 2 Hex Hd.	1
26	00-316110	Sheave – Driven	1
27	00-316107	Belt – Drive	2
28	-	Nut 5/16-18 Hex	4
29	-	Lockwasher 5/16 Split Type	4
30	00-316106	Guard - Drive	1
31	-	Bolt 3/8-16 x 4 1/4 Hex Hd.	2
32	00-316108	Sheave – Driven	1
33	00-316109	Bushing – Driven	1
34	-	Key 1/4 x 1/4 x 1 5/16.....	1
35	00-316112	Reducer – Speed.....	1
36	-	Nut 1/2-13 Hex Hd.....	4
37	-	Washer 1/2 In.	4
38	00-316113	Bearing – Flex Block (Flange Type).....	1
39	-	Nut 10-32 Hex Hd. Elastic Stop (SST).....	2
40	-	Mach. Screw 1/2-13 x 1 1/2 Hex Hd.....	4

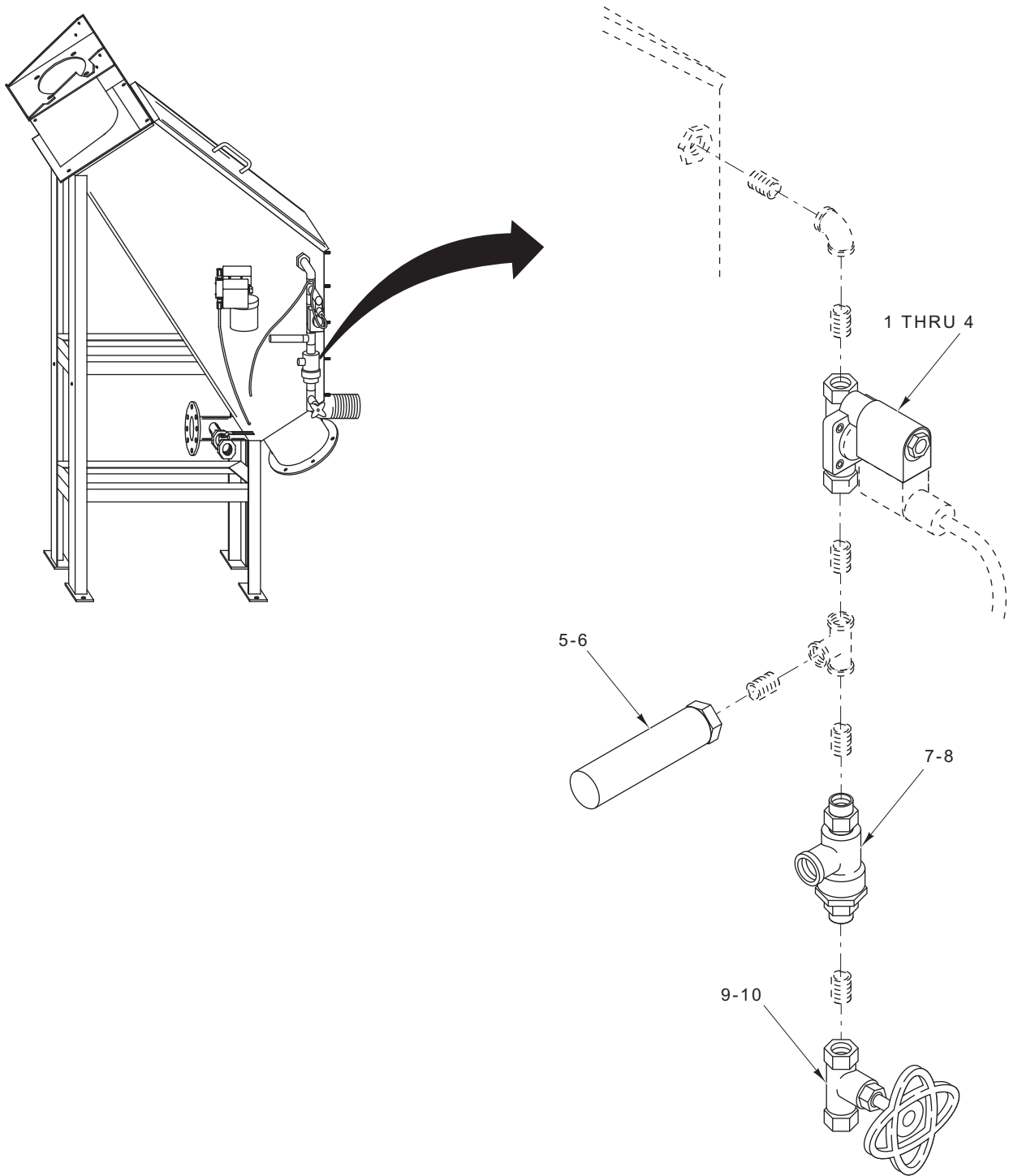


PL-57688

WATERPRESS – LOWER SECTION (ML-130049)

WATERPRESS – LOWER SECTION (ML-130049)

ILLUS.	PART NO.	NAME OF PART	AMT.
PL-57688			
1	-	Screw 10-32 x 1/2 Rd. Hd. (SST).....	2
2	-	Lockwasher #10 Split Type (SST).....	2
3	00-316124	Handle (Alum.).....	1
4	00-316123	Cover – Access.....	1
5	-	Lockwasher 3/8 Split Type.....	12
6	-	Nut 3/8-16 Hex.....	12
7	-	Tape – Sealing 1/16 x 1 x 63 In. Lg. (Prestite #155).....	1
8	00-316120	Pin – Bottom.....	2
9	00-316121	Gasket – Bottom Plate.....	1
10	00-316122	Plate – Bottom Pin.....	1
11	-	Washer 1/2 In.	1
12	-	Mach. Screw 1/2-13 x 1 Hex Hd.....	1
13	-	Screw 3/8-16 x 1 1/4 Hex Hd.	8
14	-	Nut 3/8-16 Hex.....	8
15	-	Lockwasher 3/8 Split Type.....	8
16	00-316018	Valve – Drain (2 In.).....	1
17	-	Screw 5/8-13 x 1 1/4 Hex Hd.	8
18	00-316169	Gasket – Rubber Flange.....	1
19	-	Lockwasher 5/8 Split Type.....	8
20	-	Nut 5/8-13 Hex.....	8
21	00-316194	Pump – Water Return (7.5 Hp.).....	1
22	00-316155	Pump – Chemical Additive.....	1
23	-	Nut 3/8-16 Hex.....	4
24	-	Washer.....	4
25	00-316013	Magnet.....	1
26	00-316012	Switch – Limit (Magnetic Proximity).....	1
27	-	Screw 6-32 x 2 1/4 Rd. Hd.	2
28	00-316115	Shell Weldment.....	1
29	-	Screw 10-32 x 3/4 Rd. Hd. (SST).....	2
30	-	Screw 3/8-16 x 1 Hex Hd.....	4
31	-	Chute – Discharge (Contact Technical Service).....	1
32	-	Washer #10.....	2
33	-	Nut 6-32 Hex Hd. Elastic Stop.....	2
34	00-316192	Head Assy.....	1

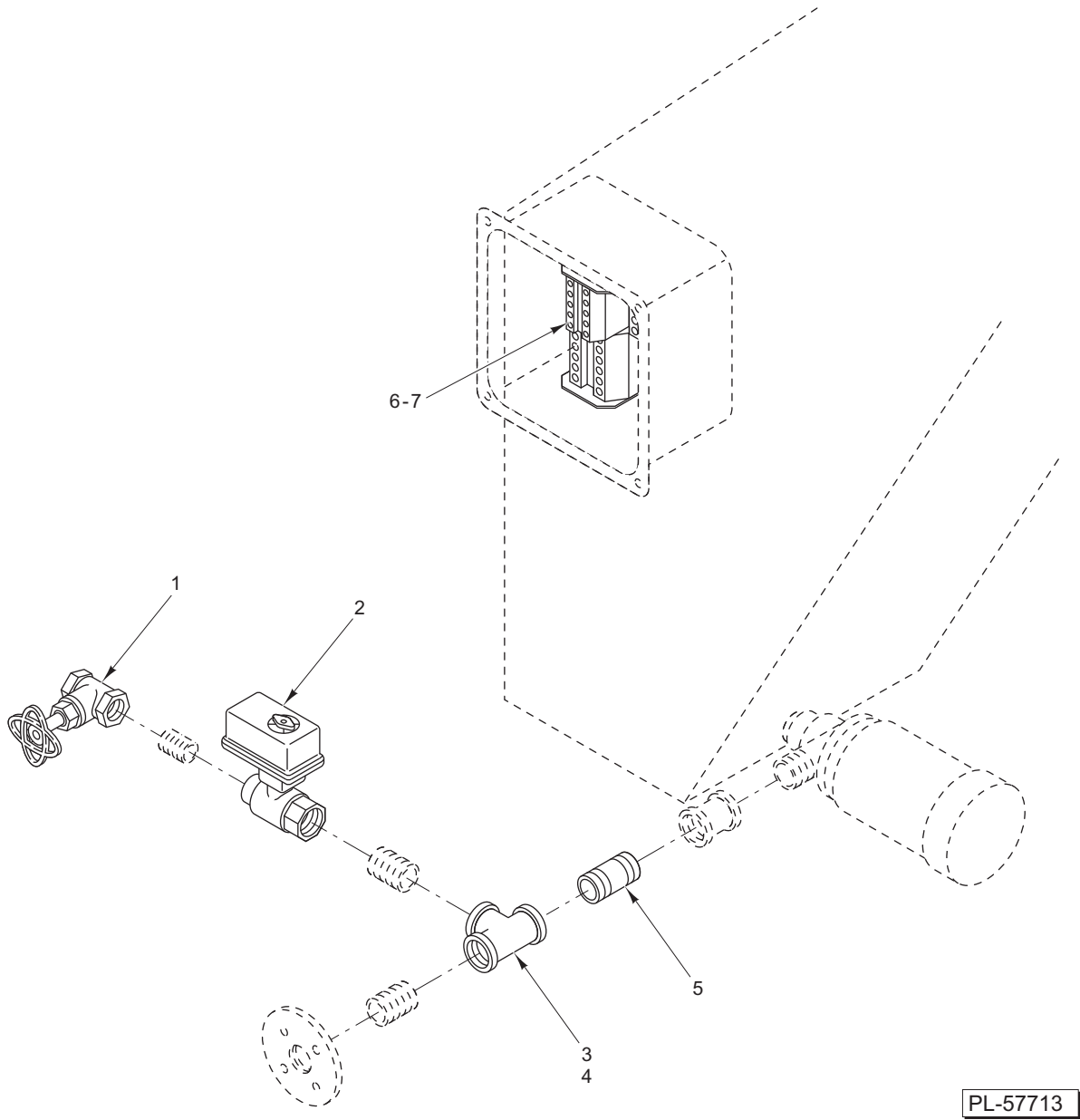


PL-57711

WATER INLET (ML-130048 & ML-130049)

WATER INLET (ML-130048 & ML-130049)

ILLUS.	PART NO.	NAME OF PART	AMT.
PL-57711			
1	00-316017	Valve – Solenoid 1/2 In. (WP6) (Previous Construction).....	1
2	00-936880	Valve – Solenoid 1/2 In. (WP6) (Parker) (Current Construction).....	1
3	00-316128	Valve – Solenoid 3/4 In. (WP9) (Previous Construction).....	1
4	00-936881	Valve – Solenoid 3/4 In. (WP9) (Parker) (Current Construction).....	1
5	00-316016	Arrestor – Shock 1/2 In. (WP6).....	1
6	00-316127	Arrestor – Shock 3/4 In. (WP9).....	1
7	00-316015	Preventor – Backflow 1/2 In. (WP6).....	1
8	00-316111	Preventor – Backflow 3/4 In. (WP9).....	1
9	00-316065	Valve – Gate 1/2 In. (WP6).....	1
10	00-316126	Valve – Gate 3/4 In. (WP9).....	1



WATER RETURN (ML-130048 & ML-130049)

ILLUS.	PART NO.	NAME OF PART	AMT.
1	00-316068	Valve – Gate 1½ In.	1
2	00-936901	Valve – Motor Operated 1½ In.	1
3	00-316066	Valve – Check 2 In. (WP6).....	1
4	00-316129	Valve – Check 3 In. (WP9).....	1
5	00-316130	Connector – Flex 3 In.	1
6	00-316164	Terminal Strip (Gray Block).....	1
7	00-316165	Terminal Strip (Black Block).....	1
	00-936902	Actuator – Motor Valve.....	1