



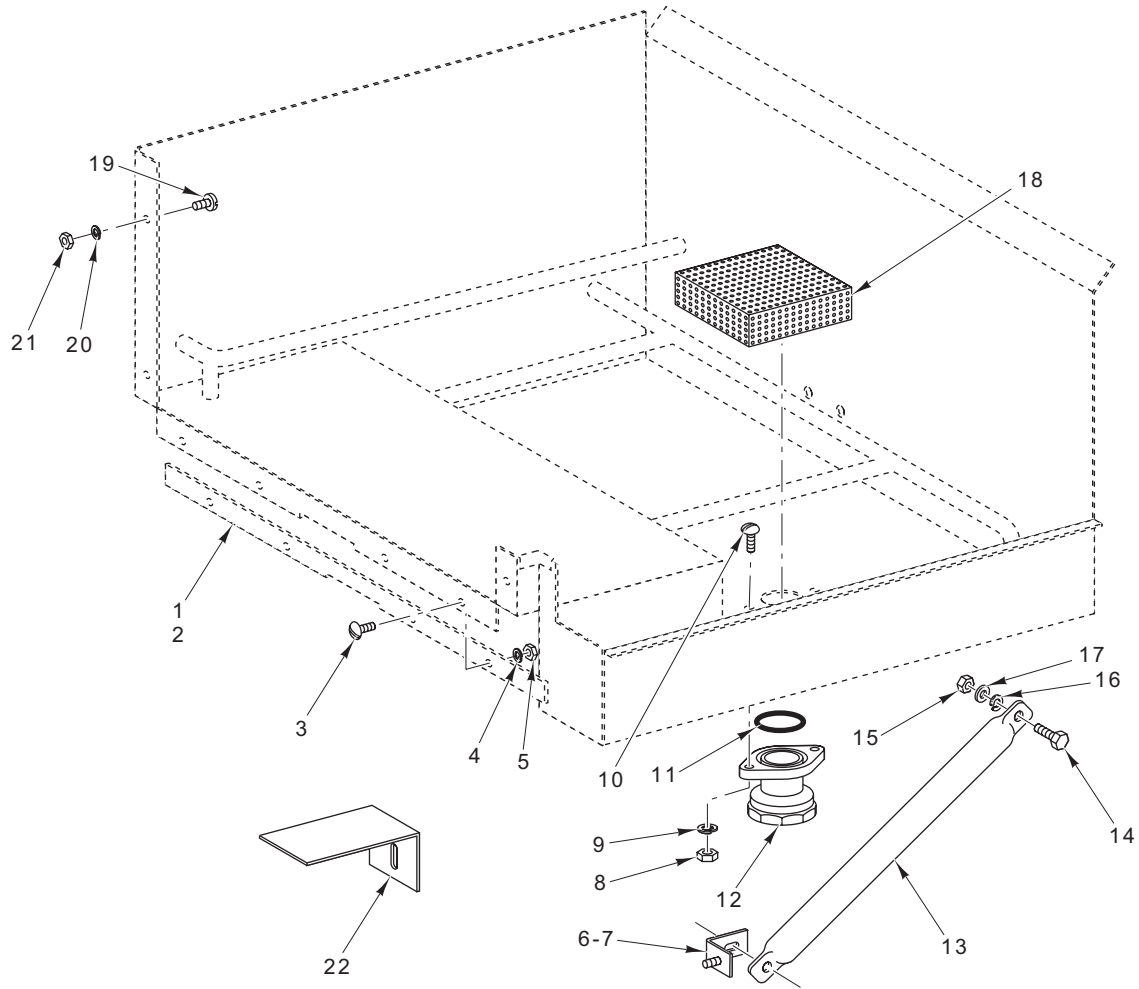
CATALOG OF REPLACEMENT PARTS

SL23/30 SIDE LOADER

SL23 R-L
SL23 L-R
SL30 R-L
SL30 L-R

Table of Contents

5	TABLE UNIT
7	DRIVE UNIT
8	SWITCH UNIT

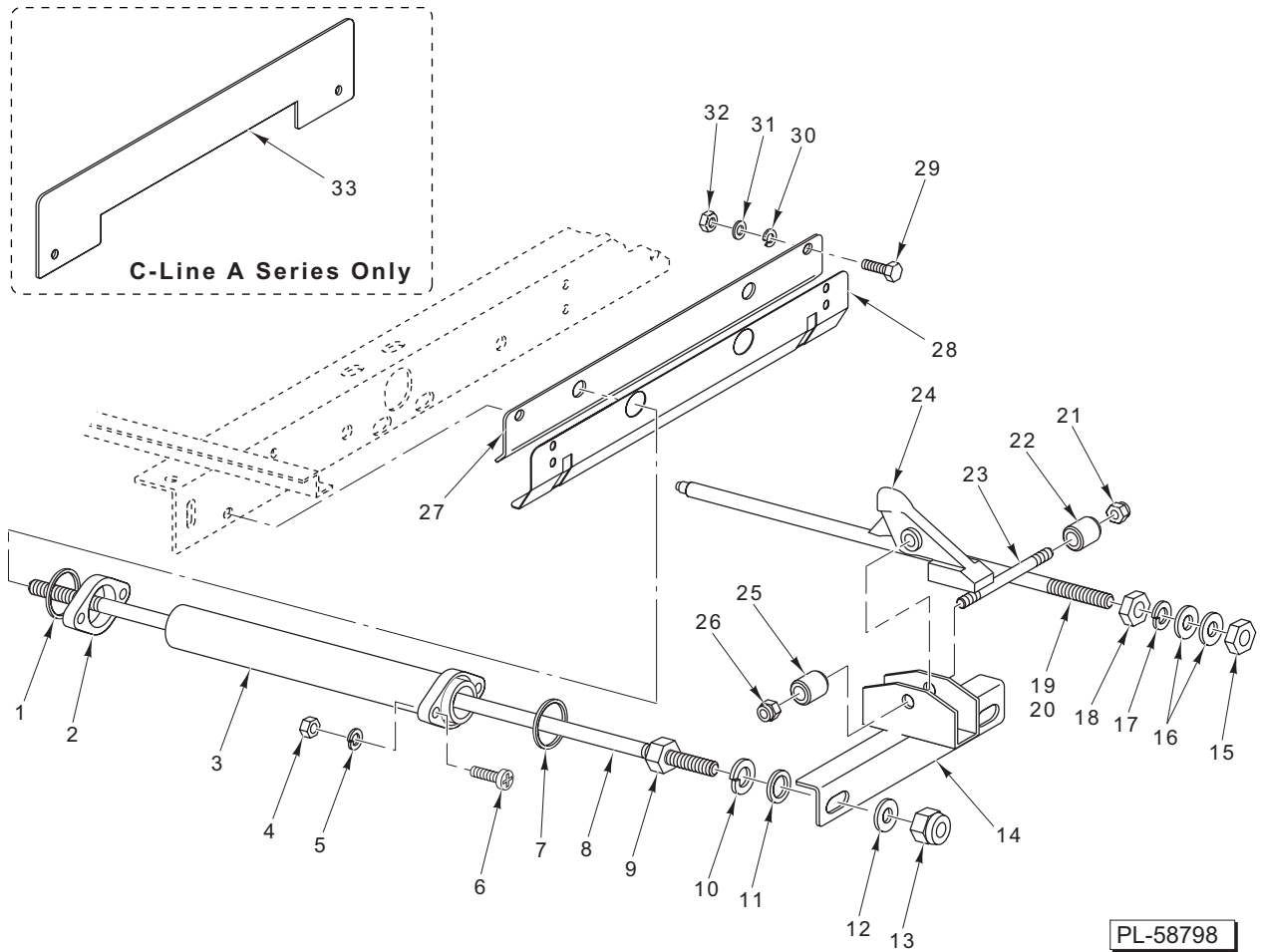


PL-58797

TABLE UNIT

TABLE UNIT

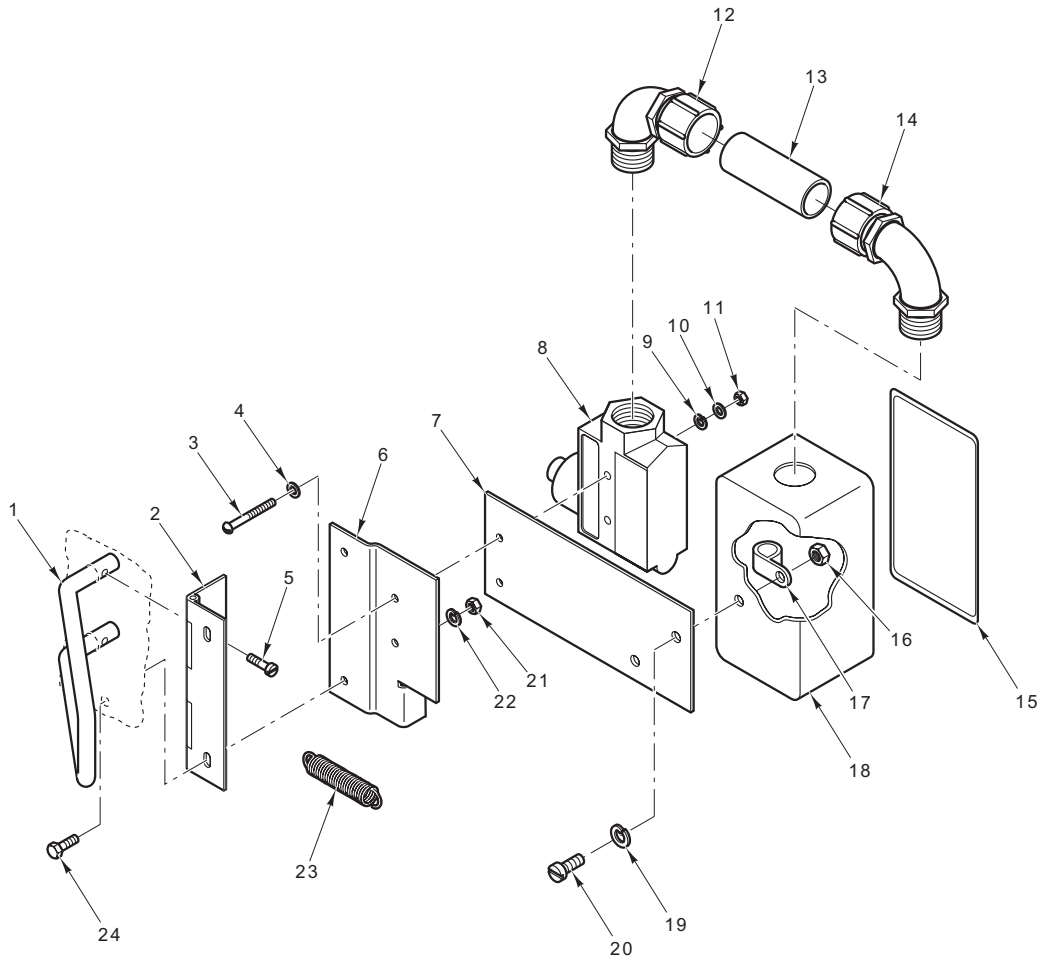
ILLUS. PL-58797	PART NO.	NAME OF PART	AMT.
1	00-080931-00001	Spacer (0.134 In.)	AR
2	00-080931-00002	Spacer (0.059 In.)	AR
3	SC-053-42	Mach. Screw 1/4-20 Slotted Truss Hd.	4
4	WL-006-16	Lockwasher 1/4 Light	4
5	NS-015-01	Nut 1/4-20 Hex	4
6	00-079448	Support – Tie Bar (C-Line A Series Only)	1
7	00-936248	Bracket – Tie Bar (CLe Series Only)	2
8	NS-015-11	Nut 5/16-18 Hex	2
9	WL-006-22	Lockwasher 5/16 Light	2
10	SC-127-94	Mach. Screw 5/16-18 x 7/8 Slotted Truss Hd.	2
11	00-067500-00020	O-Ring	1
12	00-107954	Drain Flange Assy.	1
13	00-108021	Leg – Table	2
14	SC-041-12	Cap Screw 5/16-18 x 5/8 Hex Hd.	4
15	NS-015-11	Nut 5/16-18 Hex	4
16	WL-006-22	Lockwasher 5/16 Light	4
17	WS-029-05	Washer (SST)	4
18	00-157957	Strainer Cover Assy.	1
19	SC-053-42	Mach. Screw 1/4-20 x 5/8 Slotted Truss Hd.	3
20	WL-006-16	Lockwasher 1/4 Light	3
21	NS-015-01	Nut 1/4-20 Hex	3
22	00-289245	Bracket – Table Support	1



DRIVE UNIT

DRIVE UNIT

ILLUS. PL-58798	PART NO.	NAME OF PART	AMT.
1	00-067500-00013	O-Ring	2
2	00-063010	Flange	2
3	00-102162-00003	Tube & Flange Assy.	2
4	NS-015-11	Nut ⁵ / ₁₆ Hex	8
5	WL-006-22	Lockwasher ⁵ / ₁₆ Light	8
6	SC-127-94	Mach. Screw ⁵ / ₁₆ -18 x ⁷ / ₈ Slotted Truss Hd.	8
7	00-067500-00013	O-Ring	2
8	00-102163-00002	Bar – Connecting	2
9	NS-015-20	Nut ¹ / ₂ -13 Hex	4
10	WL-006-35	Lockwasher ¹ / ₂ Light	4
11	WS-008-43	Washer	4
12	WS-008-43	Washer	4
13	NS-031-36	Stop Nut ¹ / ₂ -13	4
14	00-107944	Drive Assy.	1
15	NS-018-23	Jam Nut ¹ / ₂ -13 Hex	2
16	WS-008-43	Washer	4
17	WL-006-35	Lockwasher ¹ / ₂ Light	4
18	NS-018-23	Jam Nut ¹ / ₂ -13 Hex	2
19	00-107943	Rod – Slide (SL23)	2
20	00-107943-00002	Rod – Slide (SL30)	2
21	NS-031-33	Stop Nut ³ / ₈ -16	1
22	00-062525	Roller	1
23	00-107941	Stud – Roller	1
24	00-112377	Dog	1
25	00-062525	Roller	1
26	NS-031-33	Stop Nut ³ / ₈ -16	1
27	00-936599	Guide – Rod Sideloaders (CLe Series Only)	1
28	00-936603	Baffle – Load Side (CLe Series Only)	1
29	SC-041-12	Cap Screw ⁵ / ₁₆ -18 x ⁵ / ₈ Hex Hd.	AR
30	WL-006-22	Lockwasher ⁵ / ₁₆ Light	AR
31	WS-029-05	Washer (SST)	AR
32	NS-015-11	Nut ⁵ / ₁₆ -18 Hex	AR
33	00-111076	Deflector – Cradle End (C-Line A Series Only)	1



PL-58818

SWITCH UNIT

ILLUS.	PART NO.	NAME OF PART	AMT.
	PL-58818		
1	00-749163	Rod – Actuator	1
2	00-087327	Hinge	1
3	SC-027-24	Mach. Screw 6-32 x 1½ Slotted Rd. Hd. (Brass)	2
4	WS-002-06	Washer (Brass)	2
5	SC-069-08	Mach. Screw 10-24 x ½ Slotted Truss Hd. Nylok (SST)	2
6	00-812936	Bracket – Interlock Switch	1
7	00-277559	Bracket	1
8	00-087711-060-1	Interlock Switch Assy. (Incls. Items 3, 4, 10, & 11)	1
9	WL-014-03	Lockwasher #6 (SST)	2
10	WS-002-06	Washer (Brass)	2
11	NS-010-06	Mach. Nut 6-32 Hex (Brass)	2
12	FE-006-37	Elbow	1
13	00-067572-00060	Conduit	1
14	FE-006-37	Elbow	1
15	FE-004-24	Cover – Electrical	1
16	NS-011-18	Mach. Nut 6-32 (Brass)	2
17	00-078752-00004	Clamp – Wire	1
18	FE-003-19	Box – Conduit	1
19	WL-006-06	Lockwasher #10 Light	2
20	SC-053-02	Mach. Screw 10-24 x ½ Slotted Truss Hd.	2
21	NS-011-18	Mach. Nut 6-32 (Brass)	2
22	WL-006-06	Lockwasher #10 Light	2
23	00-064165-00003	Spring – Connection	1
24	00-081921	Mach. Screw 10-24 x ½ Trimmed Hex Hd.	2