



# Fit Perfect™ Cold Bar System



**Designed  
To Serve**

[www.get-melamine.com](http://www.get-melamine.com)



# Bugambilia® Fit Perfect™ Cold Bar System



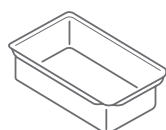
The easiest way to upgrade from stainless steel for a cleaner, brighter presentation



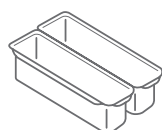
**Perfect fit** straight from the box

Fit Perfect™ vessels match standard hotel/food pan sizes, requiring minimal measuring. Place proprietary Fit Perfect™ adapter bars on both sides of the vessels and lock Fit Perfect™ food pans in place. You are all set!

## STANDARD FOOD PAN SIZE GUIDE



(1/1) FULL SIZE



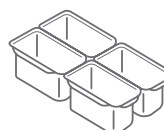
(1/2 LONG) HALF SIZE LONG



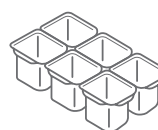
(1/2) HALF SIZE



(1/3) THIRD SIZE



(1/4) FOURTH SIZE



(1/6) SIXTH SIZE



(1/9) NINTH SIZE





**WW**  
Products Stocked  
in Glossy White

**23**  
23 Colors  
& 2 Finishes

**NSF**  
All Products  
& All Colors

**3-Year Warranty**  
for Cold Applications

## Earn more repeat business with refined presentations

Fit Perfect™'s beautiful glossy finish and clean lines put the focus on your food and draws diners' attention to your cold bar.

## The best temperature control

Bugambilia®'s patented resin-coated aluminum keeps food within the temperature safety zone longer than similar products and stainless steel.

## Operationally friendly cold bar system

Only Fit Perfect™'s patented adapter bar system locks vessels in place to prevent moving and slipping.

Stackable design eliminates jamming and maximizes shelf space in walk-ins.

Easy-lift corners make for easy change-out



## 23 colors available

Fit Perfect™ can be created in 23 colors and is coated in a glossy, smooth Bugambilia® Mod™ finish.

All products stocked in (WW) White.  
Allow 3-4 week lead time for all other colors.

For more information on Bugambilia® colors, see page 6.





# How Does the Fit Perfect™ System Work?



## ADAPTER BARS

These patent-pending bars securely lock Fit Perfect™ pans into the majority of cold wells.

You'll need adapter bars to build your layout's main support system

## GAP BARS

Because not all wells are the same length, you may need gap bars to fill any spaces in your layout.

Wider than adapter bars, gap bars help seal wells to prevent cold air from escaping.



## Set Up Your Adapter Bars

Once you know your layout, set your adapter bars into your well widthwise, allowing enough space in between to match the width of your food pans.

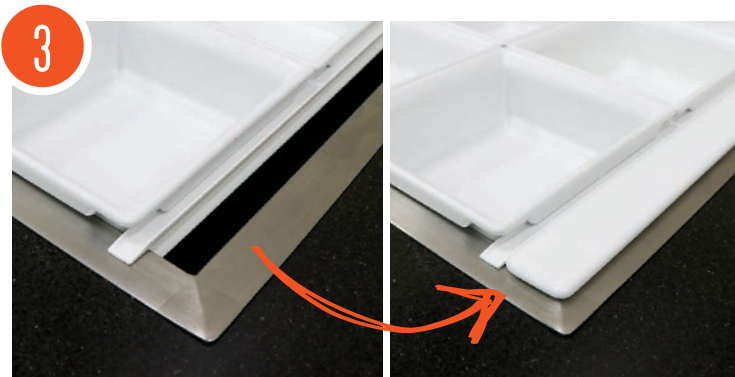
**NOTE:** Fit Perfect™ works with the majority of industry cold wells. For wells with interior width range of 19.75" to 20", use CIHSPC21-WW adapter bar. For wells with interior width range of 11.88" to 12", use CIHADP12-WW.



## Set Your Food Pans in Place

Place the lip of the Fit Perfect™ food pan over the ridge on the adapter bars to lock food pans in place.

**❄️ PRO TIP** Pre-chill empty Bugambilia® resin-coated aluminum products in your walk-in when not in use to maintain food's freshness and reduce waste.



## Mind the Gaps

If a layout leaves any uncovered spaces, just fill them in with the gap bar to keep cold air from escaping and complete the seamless look.

**NOTE:** Not all standard wells are the same length. Knowing the overall length of your well will help to determine what size gap bar you will need.

Gap bars are available in 1", 1.5", 2", 2.5", and 3" widths



# Fit Perfect™ Food Pan Sizes

Fit Perfect™ comes in a smooth, glossy Mod™ finish.



Products Stocked  
in Glossy White



23 Colors  
& 2 Finishes



All Products  
& All Colors



3-Year Warranty  
for Cold Applications

1/1  
PANS



**CIH1F-WW**  
10 qt., 20.13" x 12.38", 2.5" deep 1 ea.  
9.5 L, 51 cm x 31 cm, 6.4 cm

**CIH1FD-WW**  
11.5 qt., 20.13" x 12.38", 4" deep 1 ea.  
10.8 L, 51 cm x 31 cm, 10.2 cm

1/2  
LONG  
PANS



**CIH1/2L-WW**  
3.75 qt., 20.13" x 6.13", 2.5" deep 1 ea.  
3.6 L, 51 cm x 16 cm, 6.4 cm

**CIH1/2LD-WW**  
5.5 qt., 20.13" x 6.13", 4" deep 1 ea.  
5.2 L, 51 cm x 16 cm, 10.2 cm

**\*CIH1/2LDD-WW**  
10 qt., 20.13" x 6.13", 6" deep 1 ea.  
9.5 L, 51 cm x 16 cm, 15.2 cm

1/2  
PANS



**CIH1/2-WW**  
3.75 qt., 12.31" x 10.1", 2.5" deep 1 ea.  
3.6 L, 52 cm x 26 cm, 6.4 cm

**CIH1/2D-WW**  
5.75 qt., 12.31" x 10.1", 4" deep 1 ea.  
5.4 L, 52 cm x 26 cm, 10.2 cm

**\*CIH1/2DD-WW**  
10.5 qt., 12.31" x 10.1", 6" deep 1 ea.  
9.9 L, 52 cm x 26 cm, 15.2 cm

1/3  
PANS



**CIH1/3-WW**  
2.25 qt., 12.31" x 6.69", 2.5" deep 1 ea.  
2.1 L, 31 cm x 17 cm, 6.4 cm

**CIH1/3D-WW**  
3.75 qt., 12.31" x 6.69", 4" deep 1 ea.  
3.6 L, 31 cm x 17 cm, 10.2 cm

**CIH1/3DD-WW**  
5.5 qt., 12.31" x 6.69", 6" deep 1 ea.  
5.25 L, 31 cm x 17 cm, 15.2 cm

1/4  
PANS



**CIH1/4-WW**  
1.75 qt., 10.1" x 6.19", 2.5" deep 1 ea.  
1.7 L, 26 cm x 16 cm, 6.4 cm

**CIH1/4D-WW**  
2.75 qt., 10.1" x 6.19", 4" deep 1 ea.  
2.6 L, 26 cm x 16 cm, 10.2 cm

**CIH1/4DD-WW**  
4.25 qt., 10.1" x 6.19", 6" deep 1 ea.  
4 L, 26 cm x 16 cm, 15.2 cm

1/6  
PANS



**CIH1/6-WW**  
1 qt., 6.75" x 6.19", 2.5" deep 1 ea.  
1 L, 17 cm x 16 cm, 6.4 cm

**CIH1/6D-WW**  
1.75 qt., 6.75" x 6.19", 4" deep 1 ea.  
1.7 L, 17 cm x 16 cm, 10.2 cm

**CIH1/6DD-WW**  
2.75 qt., 6.75" x 6.19", 6" deep 1 ea.  
2.3 L, 17 cm x 16 cm, 15.2 cm

1/9  
PANS



**CIH1/9-WW**  
18 oz., 6.73" x 4.12", 2.5" deep 1 ea.  
532 ml, 17 cm x 11 cm, 6.4 cm

**CIH1/9D-WW**  
1 qt., 6.73" x 4.12", 4" deep 1 ea.  
0.9 L, 17 cm x 11 cm, 10.2 cm

**\*CIH1/9DD-WW**  
1.7 qt., 6.73" x 4.12", 6" deep 1 ea.  
1.6 L, 17 cm x 11 cm, 15.2 cm



## ADAPTER BAR

**CIHSPC21-WW** 20.75" 53 cm 1 ea.  
**CIHADP12-WW** 13.1" 33 cm 1 ea.

Adapter Bars are stocked in White only. Other colors available are Black, Red, Green, and Yellow. Call for lead time and pricing.



## GAP BAR

**CIHGAP10-WW** 20.88" x 1" 53 cm x 3 cm 1 ea.  
**CIHGAP15-WW** 20.88" x 1.5" 53 cm x 4 cm 1 ea.  
**CIHGAP20-WW** 20.88" x 2" 53 cm x 5 cm 1 ea.  
**CIHGAP25-WW** 20.88" x 2.5" 53 cm x 6 cm 1 ea.  
**CIHGAP30-WW** 20.88" x 3" 53 cm x 8 cm 1 ea.



## EXTENSION BAR

**CIHSPC12-WW** 12" 31 cm 1 ea.

Extension bar rests inside adapter bars. Use example: use an extension bar when you have two 1/3 pans and want to add three 1/9 for the lower row.

\*Not a stocked item.  
Allow 3-4 weeks for production.





## Resin-Coated Cast Aluminum Buffet and Displayware



3-Year Warranty  
for Cold Applications



All Products  
& All Colors



Can be used on  
Ice, Cold Wells, &  
Deli Cases



Freezer &  
Blast Chiller Safe



Dishwasher Safe



23 Colors  
& 2 Finishes

### From Inspiration-to-Table, It's Art

Handcrafted by skilled artisans in Mexico, each Bugambilia® piece begins life as an artist's sketch with the sole purpose of building exceptional guest experiences with exquisite buffetware.

From casting to coating, Bugambilia® blooms in the caring hands of its artisan creators before finding its NSF-certified place in your foodservice operation.

### Unparalleled In-Service Life

Products built with true craftsmanship always offer the best in-service life, and Bugambilia® is no different. In fact, the resin adhesion process was so painstakingly created, it's patented.

### The Best Operational Efficiency

Bugambilia® keeps up with your operational needs because of its expert craftsmanship. The cast aluminum body and resin coating offer the best temperature retention, keeping your food within the temperature safety zone longer than stainless steel pans and even other similar resin-coated products.

### Customized for You

Even better, because each piece is individually crafted, creating custom pieces is a breeze! Partner with us to develop unique pieces and tell your brand story the way only you can.



## Bugambilia® Color Swatches

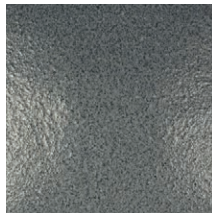
Unless noted, Fit Perfect™ products stocked in Smooth, Glossy Finish in White (WW).  
Allow 3-4 week lead time for all other colors.



WW | White



BB | Black



ST | Steel



FR | Fire Red



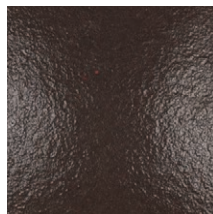
PC | Pacific Blue



BR | Brick



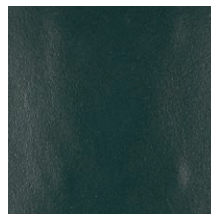
CH | Chocolate



MC | Mocha



LT | Latte



FT | Forest Green



WG | Willow Green



CB | Cranberry



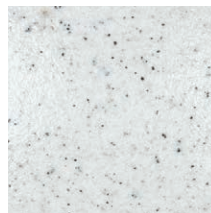
LM | Lime



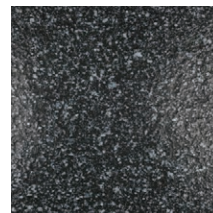
TG | Tangerine



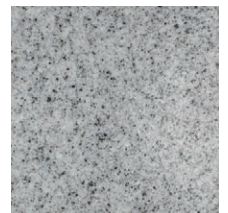
YW | Yellow



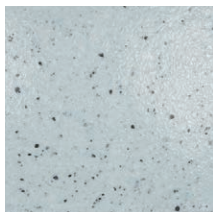
MW | Marble White



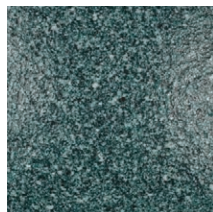
GB | Granite Black



G | Gray



SB | Sky Blue



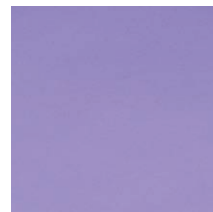
J | Jade



S | Sand



T | Terracotta



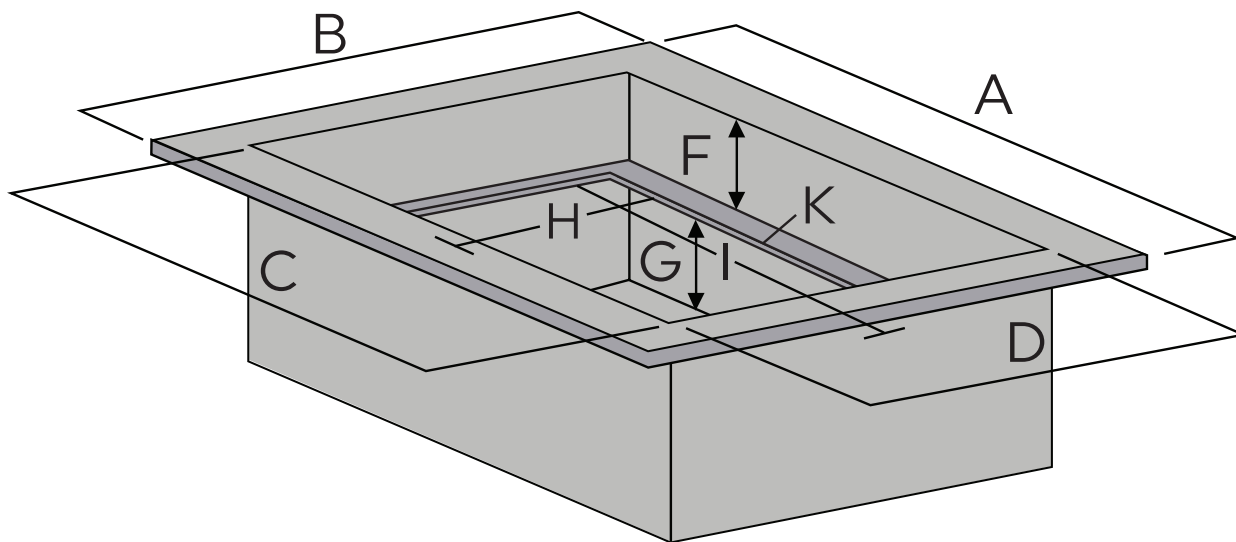
LV | Lavender

*Bugambilia*®

# How to Order Bugambilia® for Your Cold Well

## 1 MEASURE A WELL

Please take precise measurements of the unit. It is important to provide exact dimensions. **DO NOT** round up or down.



<b>A</b>	<b>Outside flange length measurement</b>
<b>B</b>	<b>Outside flange width measurement</b>
<b>C</b>	<b>Inside well length measurement</b>
<b>D</b>	<b>Inside well width measurement</b>
<b>F</b>	<b>Top of the well to top of the flange measurement</b>
<b>G</b>	<b>Top of the flange to the bottom of the well measurement</b>
<b>H</b>	<b>Dimension in between inside flanges front to back (edge to edge)</b>
<b>I</b>	<b>Dimension in between inside flanges left to right (edge to edge) if any</b>
<b>K</b>	<b>Flange width measurement (front &amp; back)</b>

## 2 SUBMIT EACH WELL DIAGRAM

Each well diagram form will need to be submitted to our Bugambilia tile expert.

Please note custom wells (irregular, curved, or angled) may require custom tiles which are available upon request. Please contact us at (800) 727.4500 for assistance.

