

# TRAY SLIDE UNIVERSAL (26) INSTALLATION MANUAL

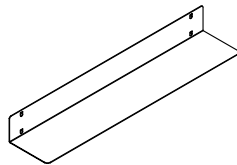
ITEM ①



H26R104590  
(POST TRAY SLIDE UNIVERSAL 26)

X 4 EACH

ITEM ②



H26R104470  
(TRAY SLIDE UNIVERSAL)

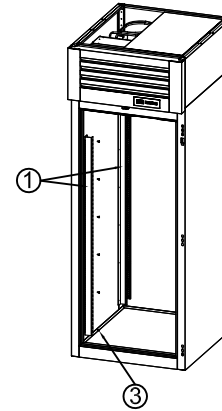
X 14 EACH

ITEM ③



7142401303  
(SCREW M4\*13 DELTA COATING #8 1/2)

X 24 EACH



## 1 INSTALLING POSTS

INSTALL ITEM 1 WITH ITEM 3 TO BOTH SIDES OF CABINET LINER

TWO POST ON EACH SIDE FACING INWARD AS SHOWN

THERE ARE PRE-DRILLED HOLES TO INSTALL POST

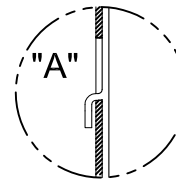
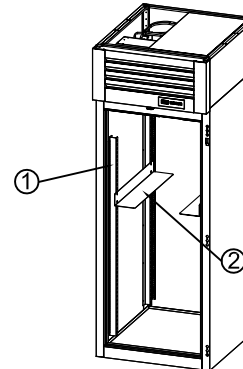
## 2 INSTALLING TRAY SLIDES

INSTALL ITEM 2 INTO ITEM 1 AS SHOWN

TRAY SLIDE HOOKS SHOULD BE POSITIONED INSIDE OF RECTANGLE OPENING (SEE "A")

TRAY SLIDE ALIGNMENT (ON EACH POST) SHOULD BE ON THE SAME RECTANGLE OPENING

REPEAT INSTALLMENT OF TRAY SLIDES 7 SETS



## 3 INSTALLING BUN PANS & PANS

TRAY SLIDES UNIVERSAL USE  
18" X 26" BUN PANS  
18" x 14" BUN PANS  
FULL SIZE PANS

