

HOT FOOD TEMPLATES



32

Template
Options

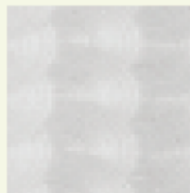
6

Finish
Options

ALL HOT VESSELS CAN BE MIXED AND MATCHED AND INCORPORATED INTO STOCK AND CUSTOM HOT FOOD TEMPLATES. ALL PRODUCTS WILL ACCOMMODATE TEMPERATURE UP TO 450 DEGREES. KEEPS HOT FOOD HOTTER.



BRS
Brushed
Stainless Steel



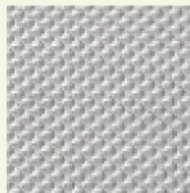
CSS
Circle Swirl
Stainless Steel



RSS
Random Swirl
Stainless Steel



E1
Embossed 1
16 Gauge
Stainless Steel



E2
Embossed 2
16 Gauge
Stainless Steel



E3
Embossed 3
16 Gauge
Stainless Steel

TO ORDER TEMPLATES:

CW1020 BRS

ITEM NUMBER FINISH

Standard Size:
13 1/2 x 21 5/8

Fits Well Size:
11 7/8 x 19 7/8