

ICETRO

**Installing The Bin-Stat Kit
IM Series Ice Machines**

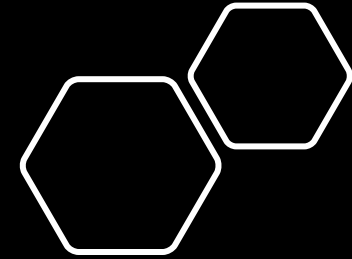
Why is this necessary?

When installing an ice machine on top of a soda fountain, a bin-stat kit is recommended to keep ice at an appropriate level.

Doing so will prevent ice from building up to an unsafe level, hoper overflow, ice machine harvest issues, and/or water dripping down and staining the sides of the soda fountain with scale.

Failure to install a bin-stat kit can also potentially void the warranty on your soda fountain, depending upon the manufacturer!

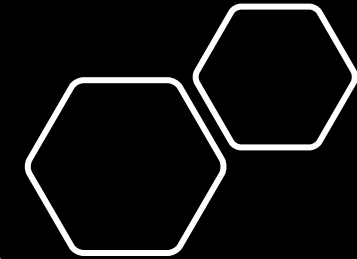
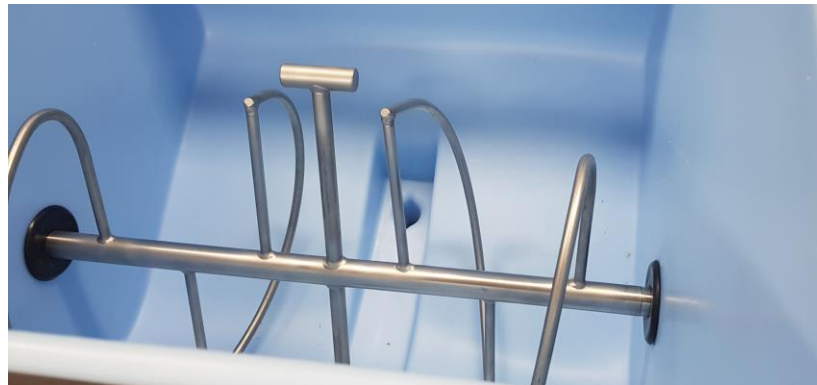
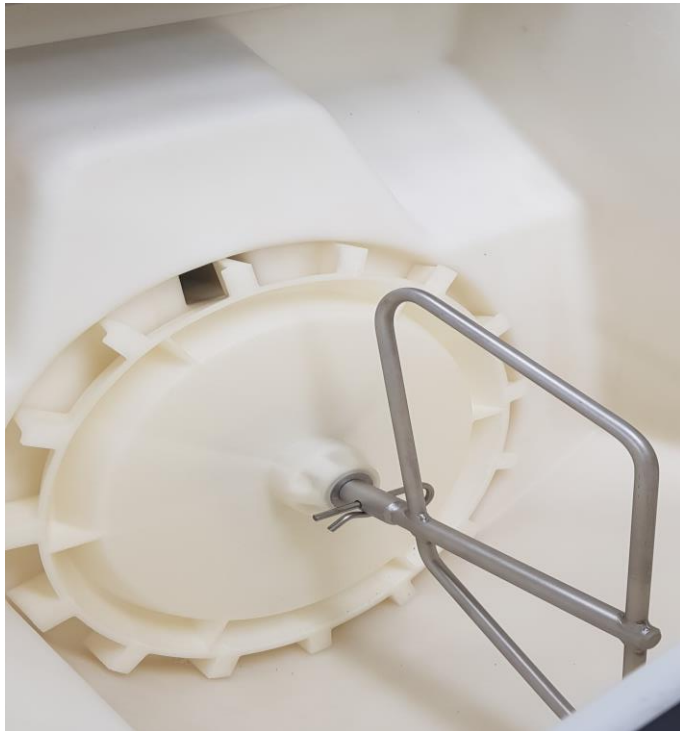
Look HERE for indication of 30" or 22" wide models!



Introduction

Paddle Wheel & Auger Operation

Paddle wheel or auger ice delivery systems have a built-in ice breaker-bar. The wheel/auger turns in either a clockwise or counter-clockwise motion and pushes the ice up and over to one side of the hopper, causing ice to pile up on that side & push up, damage, or knock out of place the water trough. It's important to determine which direction your dispenser pushes the ice toward so you can set the bin-stat accordingly.



Dispenser Operation

Required by major dispenser manufacturers!



⚠ CAUTION:

Do not slide the ice maker in place as gasket seal damage may occur.

Install Ice maker as per Manufacturer's Installation Instructions.

8. **Install Ice maker Bin Stat (ice level sensor).**

The ice level in dispenser hopper should always be a minimum 2" below hopper top for cubed ice and 4"-6" below for soft ice (chunklet, chewbelt).

For ice makers that use 'cap tube' technology for ice level sensing, Cornelius supplies a bracket and retainers to mount cap tube, install and route as shown in Figure 11. and Figure 12.

For Manitowoc Ice makers that use Manitowoc Ice K00477 Dispenser Thermostat Kit (Sold Separately), See Figure 13a. and See Figure 13b. for Installation.

⚠ CAUTION:

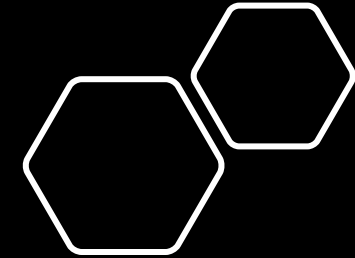
Failure to install could result in equipment damage.

LANCER

LANCER INSTALLATION GUIDE

⚠ ATTENTION

Failure to use an ice bin thermostat will not only void your IBD's warranty but will result in the inability to control the level of ice in the ice bin which can cause damage to your dispenser.

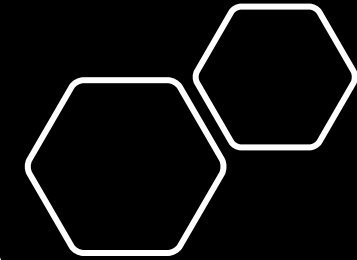
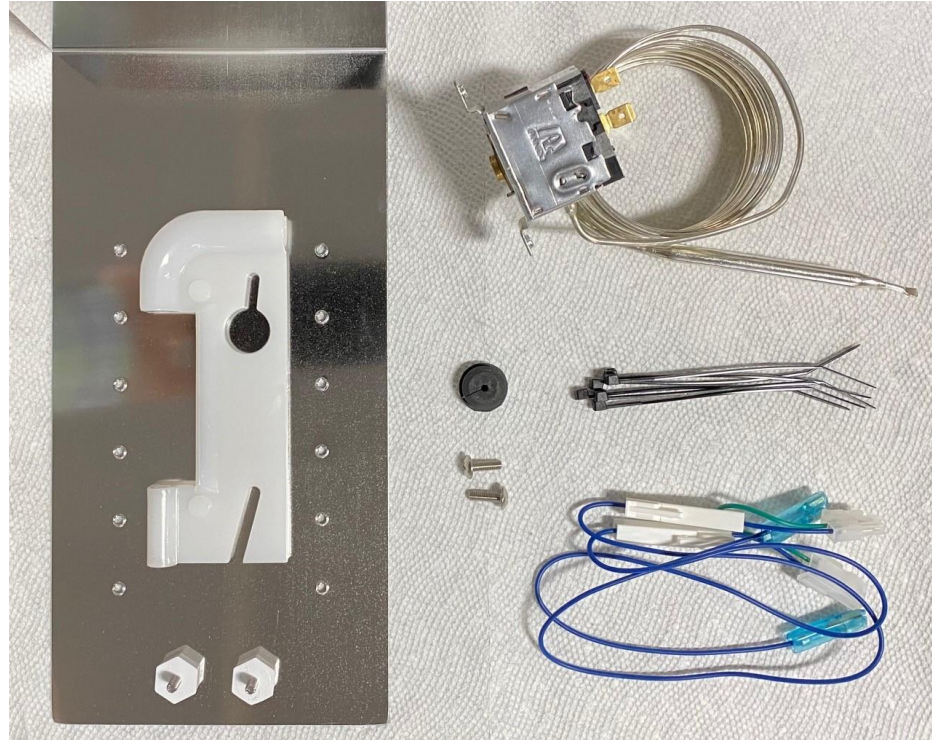


Manufacturer Requirements

Step 1: Make sure you have all the parts.

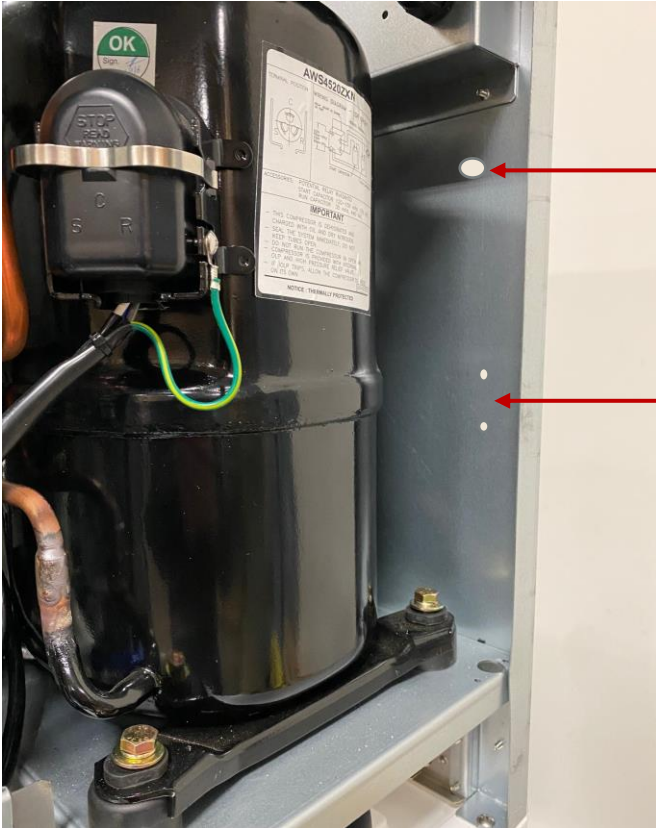
Each kit comes with the following items:

- 1 Dispenser Bracket
- 1 Thermostat Control
- 1 Wiring Harness
- 1 Bulb Bracket
- 2 Thumbscrews
- 1 Grommet
- 2 Screws
- 5 Zip Ties



Installation Steps
All Models

Step 2: Mount the bin-stat.



Drill a $\frac{1}{2}$ " hole through the back of the ice machine, below the power supply.

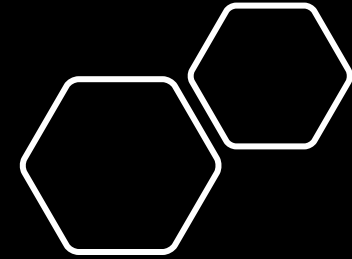
Mount the bin-stat control to the back of the ice machine by drilling two $\frac{3}{16}$ " holes through the back panel and fastening it with the provided screws.

It will be easier to first place the bin-stat control on the back of the machine to mark/drill the holes from the back side of the machine.

Do NOT drill through the holes on the bin-stat control as they are threaded!

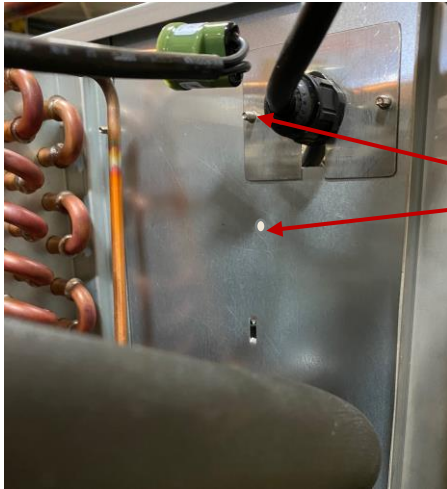
Bulb hole is $5\text{-}\frac{3}{4}$ " down from top & $1\text{-}\frac{1}{4}$ " from side.
First bin-stat hole is $10\text{-}\frac{1}{4}$ " down from top & $1\text{-}\frac{1}{4}$ " from side.
Second bin-stat hole is $2\text{-}\frac{3}{16}$ " down from first hole.

For IM-1100, ALL holes must be $1\text{-}\frac{7}{8}$ " from the side.



**Installation Steps
30" Models**

Step 2: Mount the bin-stat.



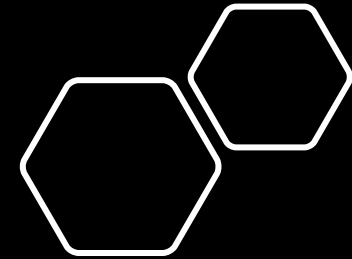
Mount the bin-stat control to the inside, back panel of the ice machine by utilizing the existing screw to the left of the power cord, and then drilling one 3/16" hole below that, through the back panel, and fastening it with the provided screws.

It will be easier to first mount the bin-stat control on the back of the machine, utilizing the existing screw mentioned above, and then marking/drilling the second hole from the back side of the machine.

Do NOT drill through the holes on the bin-stat control as they're threaded!



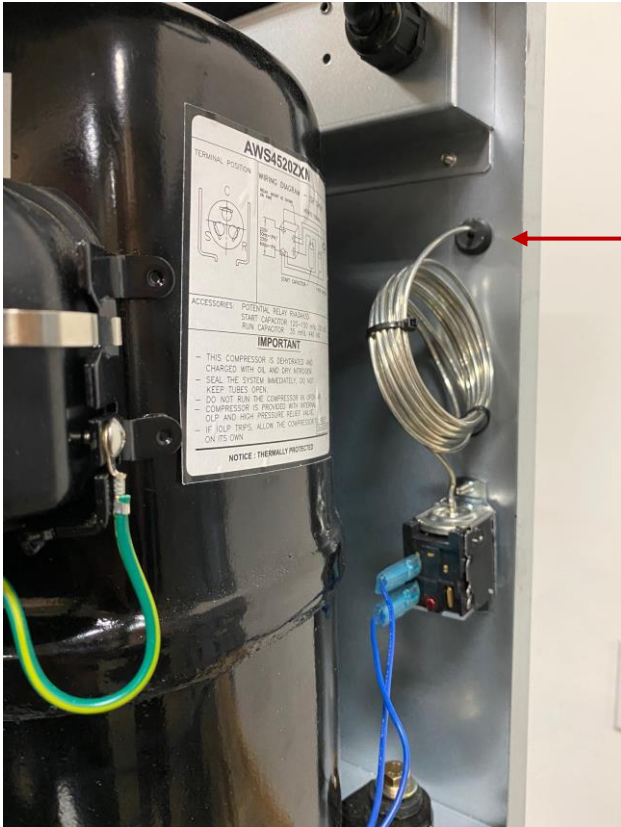
Drill a 1/2" hole through the back of the ice machine, next to the compressor for the sensing bulb to exit the machine.



Installation Steps
22" Models

Bulb hole is 15-3/8" down from top & 1-1/4" from side.
Second bin-stat hole is 2-3/16" down from first hole.

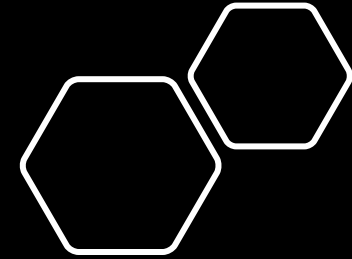
Step 3: Run sensing bulb out of machine.



Run the sensing bulb out of the hole made and use the rubber grommet to seal the hole.

Leave any excess capillary tubing coiled up in/out of the ice machine, but NOT inside of the soda fountain.

Use the provided zip ties if needed to keep the coil tight, rather than stretched out and touching other components.



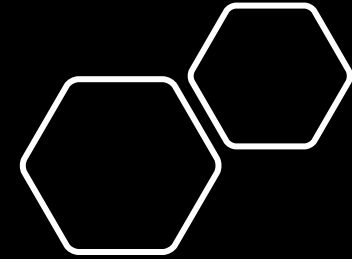
Step 3: Run sensing bulb out of machine.



Run the sensing bulb out of the hole made and use the rubber grommet to seal the hole.

Leave any excess capillary tubing coiled up in/out of the ice machine, but NOT inside of the soda fountain.

Use the provided zip ties if needed to keep the coil tight, rather than stretched out and touching other components.



Installation Steps
22" Models

Step 4: Run sensing bulb between machines.

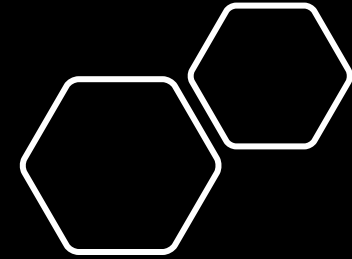
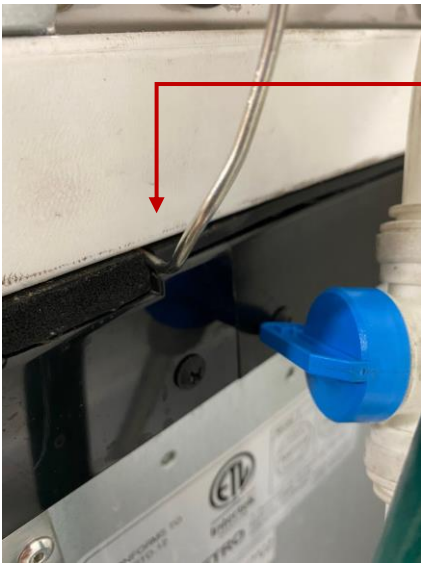


On the back side of the machine, run the capillary down to where it sits between the ice machine and soda fountain.

Run the capillary within the break between the two pieces of insulation tape. If none exists, cut a break in the tape.

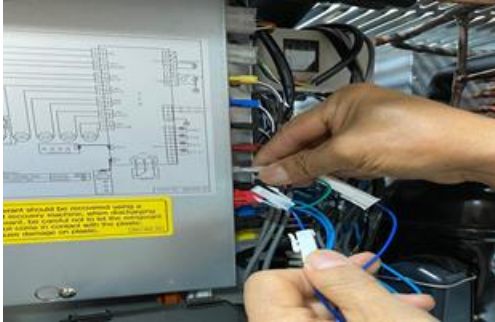
Failure to do this may result in the capillary being crushed by the weight of the machine.

Take special care not to kink the capillary tubing while routing it into the dispenser.

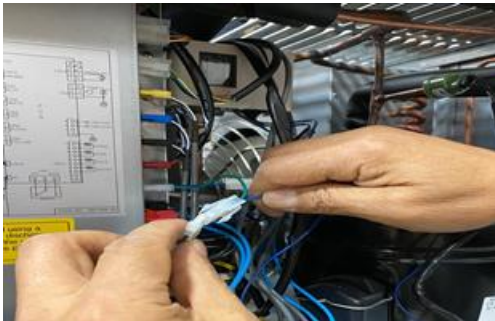


Installation Steps
All Models

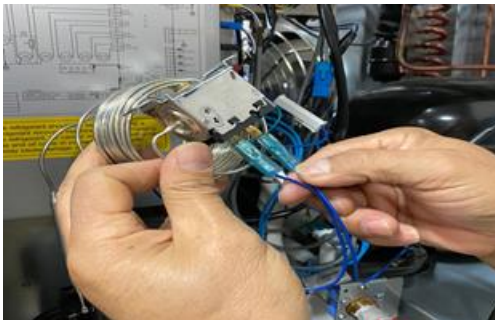
Step 5: Wire bin-stat to ice machine.



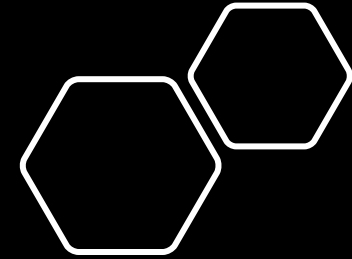
Disconnect the bin switch from the control box and replace it with the male end of the wiring harness provided.



Connect the female end of the wiring harness to the male end of the bin switch .



Connect the spade connectors to the bin-stat control.



**Installation Steps
All Models**

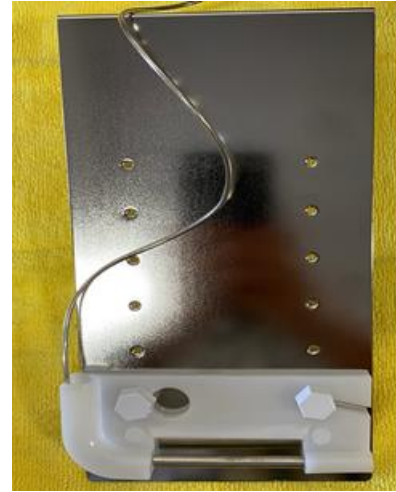
Step 6: Secure sensing bulb to dispenser bracket.



Use 1/4" drill bit to enlarge curved bracket opening.

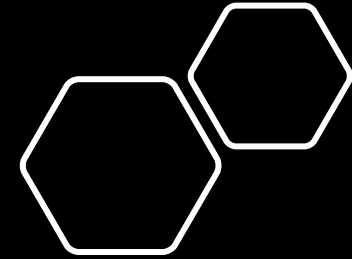


Fit the bulb through the opening & place the bulb tip in the other end.



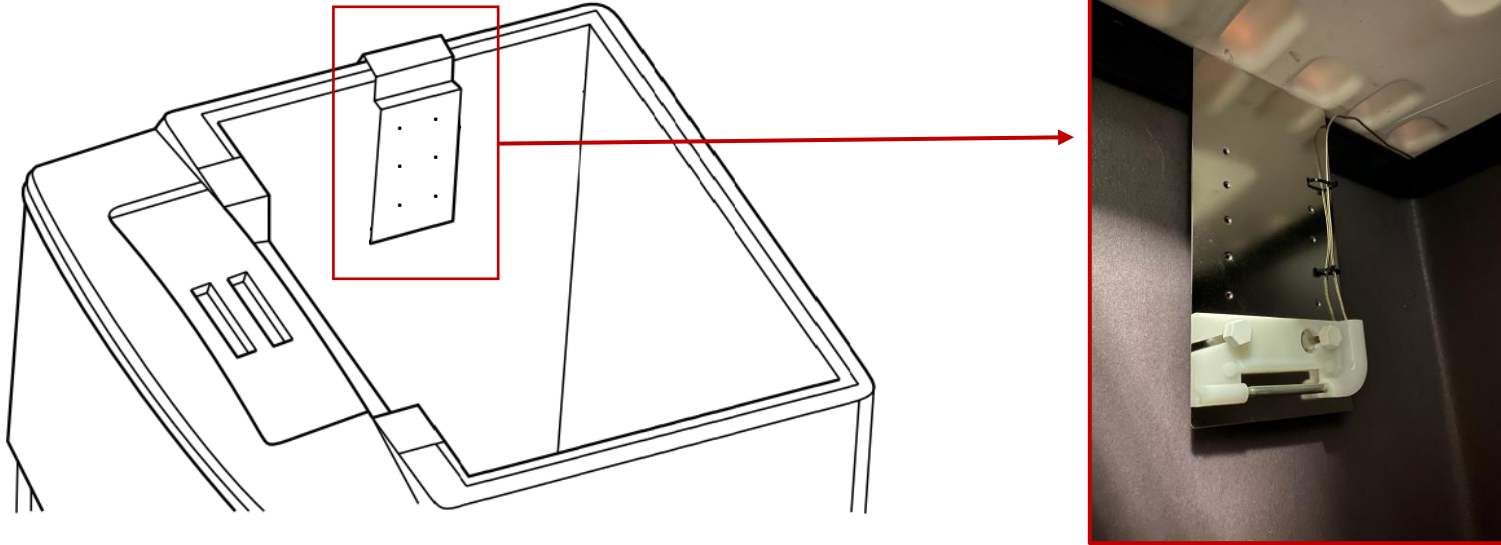
Fix the bulb bracket to the dispenser bracket with the supplied thumbscrews at the desired position.

**Use the included zip ties to secure the capillary tube to the dispenser bracket!
(Example shown on next page)**



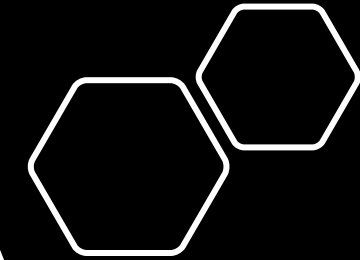
**Installation Steps
All Models**

Step 7: Secure dispenser bracket.



Mount the dispenser bracket between the ice machine & soda fountain.

Note: All dispensers are different. Please consult the installation guide for your specific dispenser to ensure you're installing the bin-stat on the correct side of the dispenser and within the appropriate distances.



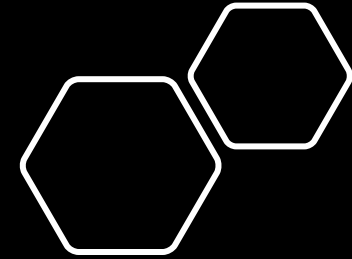
Installation Steps
All Models

Step 8: Test bin-stat operation.



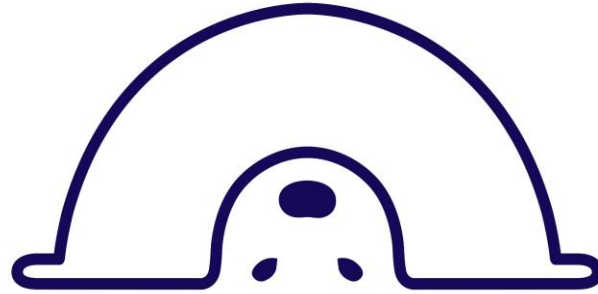
Once install is complete, test the bin-stat's operation by holding ice against the sensing bulb for approximately 15 seconds.

When the machine stops operation the "FULL" indicator light should illuminate on the front panel of the ice machine.



Installation Steps
All Models

Thank You



ICETRO