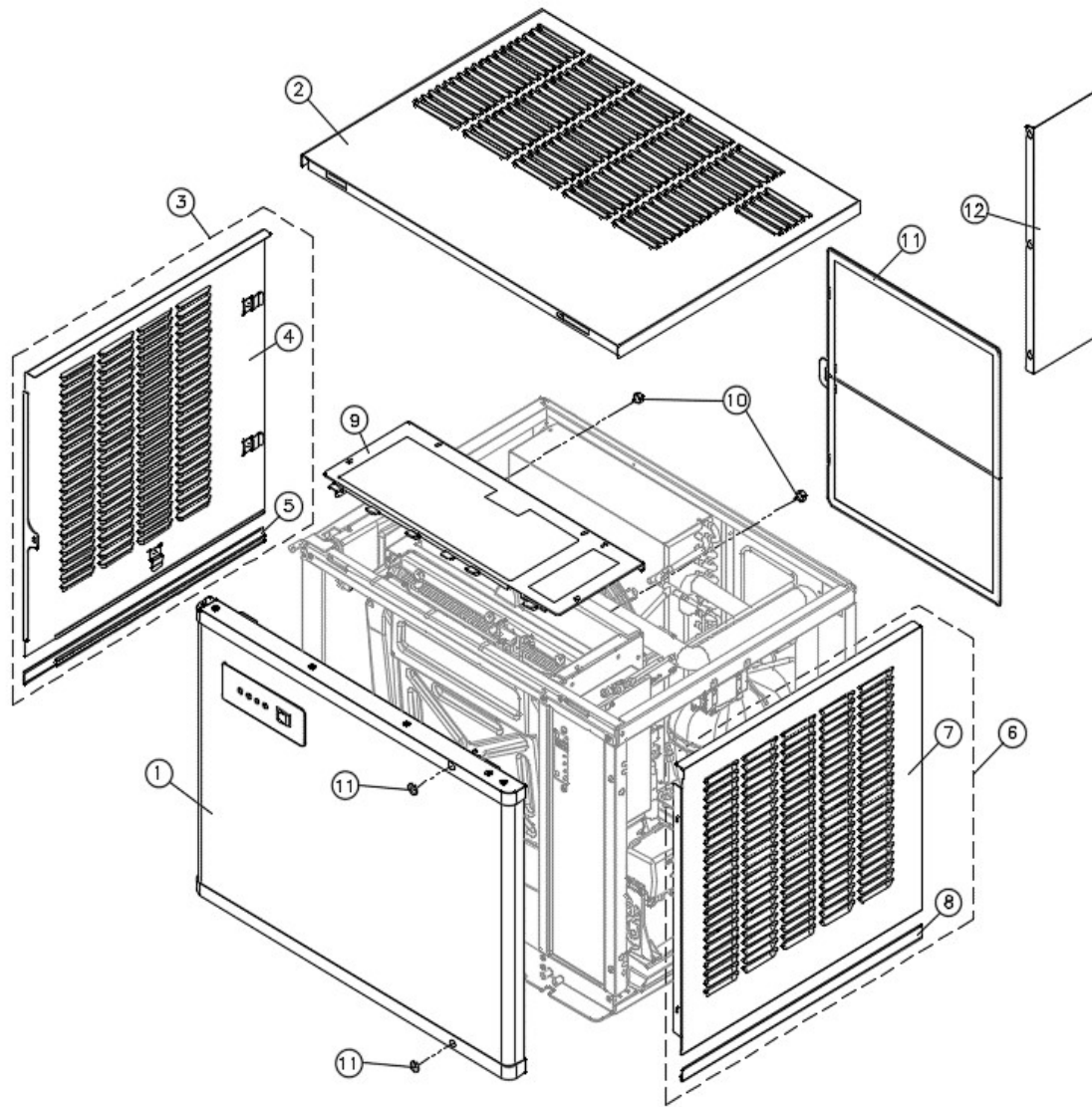


**IM-1100-AC/AH**  
**PARTS LIST(220V/60HZ)**

**Korean Model : IM500A**  
**(Ver 2.2)**

# IM-1100-AC\_AH

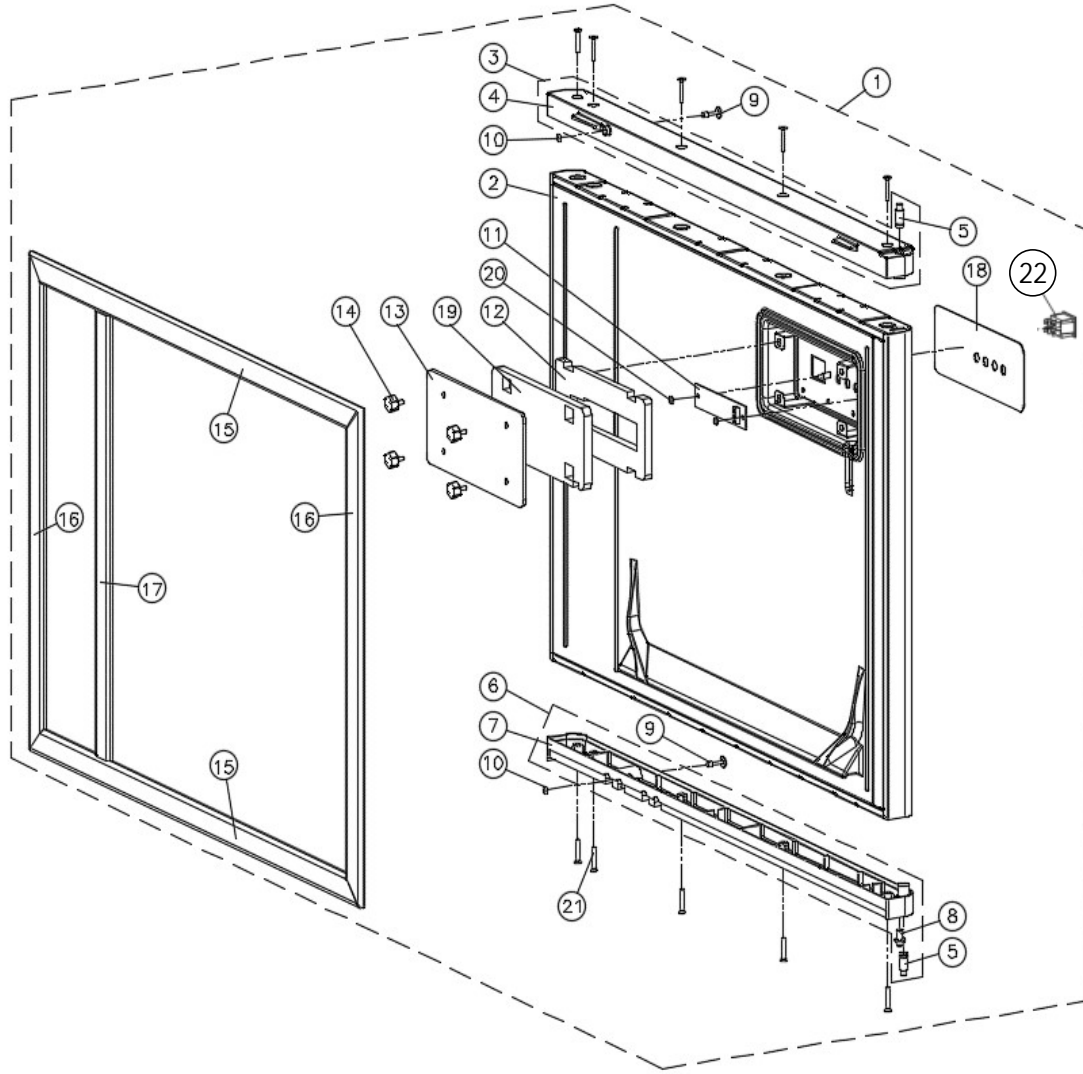
[ OUT CASE ASSY ]



NO	ITEMS	CODE	EXW USD	Q'TY
1	FRONT PANEL TOTAL ASS'Y	422002750		1
2	TOP COVER(AIR)	317194400		1
3	LEFT SIDE PANEL ASS'Y	420049300		1
4	LEFT SIDE W-PANEL	349098900		1
5	SIDE PANEL B-ENDCAP(L)	348010200		1
6	RIGHT SIDE PANEL ASS'Y	420049410		1
7	RIGHT SIDE W-PANEL	349099110		1
8	SIDE PANEL B-ENDCAP(R)	348010300		1
9	EVAP TOP COVER ASS'Y	427059100		1
10	HAND SCREW	210804502		2
11	FILTER CONDENSER(W417 x H710)	640008800		1
12	AIR PROTECTOR (500)	339016000		1
13	CAP SILICON	319011120		2
14				
15				
16				
17				
18				
19				
20				
21				
22				
23				
24				
25				
26				
27				
28				
29				
30				
31				
32				
33				
34				
35				

# IM-1100-AC\_AH

## [ FRONT PANEL ASSY ]

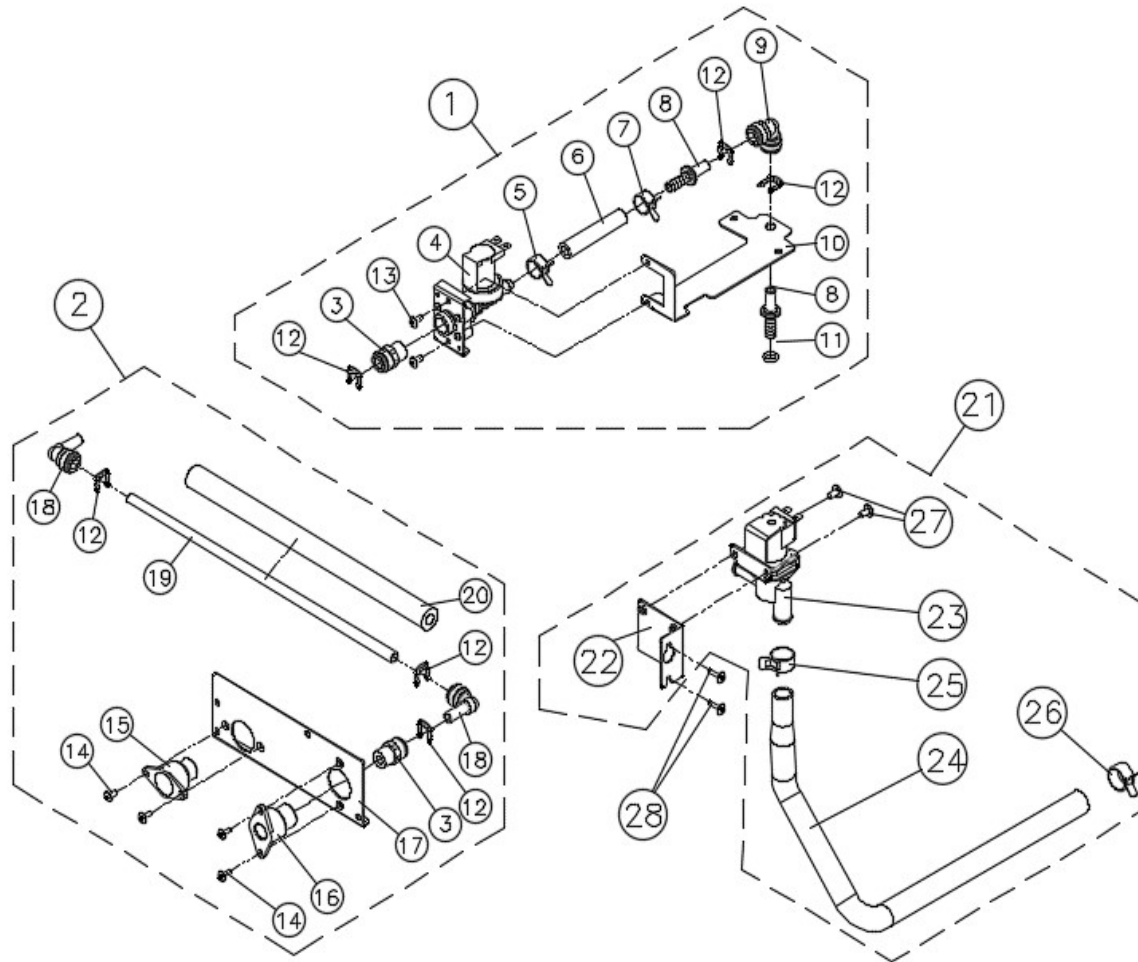


NO	ITEMS	CODE	EXW USD	Q'TY
1	FRONT PANEL TOTAL ASS'Y	422002750		1
2	FRONT PANEL FOAM ASS'Y	422002840		1
3	FRONT TOP CAP ASSY	432034910		1
4	FRONT TOP CAP	341012602		1
5	PIN-PUSH ASSY	314045500		2
6	FRONT BOTTOM CAP ASSY	432035010		1
7	FRONT BOTTOM CAP	341012702		1
8	SHAFT HINGE	321005000		1
9	COVER SCREW	210818600		2
10	O-RING(AN105)	303036600		2
11	DISPLAY PCB	367013000		1
12	INSULATION-DISPLAY	306041901		1
13	DISPLAY REAR-COVER	317197500		1
14	(+) HAND SCREW	210804502		4
15	F-PANEL GASKET(TOP/LOW)	656004500		2
16	F-PANEL GASKET(TOP/LOW)	656004500		2
17	F-PANEL GASKET(IN)	656004610		1
18	FRONT DISPLAY	440033820		1
19	INSULATION-DISPLAY(COVER)	306043700		1
20	NUT HEX	215000600		2
21	MACHINE SCREW(FLAT HEAD)	MFCX0832R		10
22	ICE/OFF/WASH SWITCH (OLDER)	355001700		1
23				
24				
25				
26				
27				
28				
29				
30				
31				
32				
33				
34				
35				



# IM-1100-AC\_AH

## [ WATER IN/OUT ASSY ]



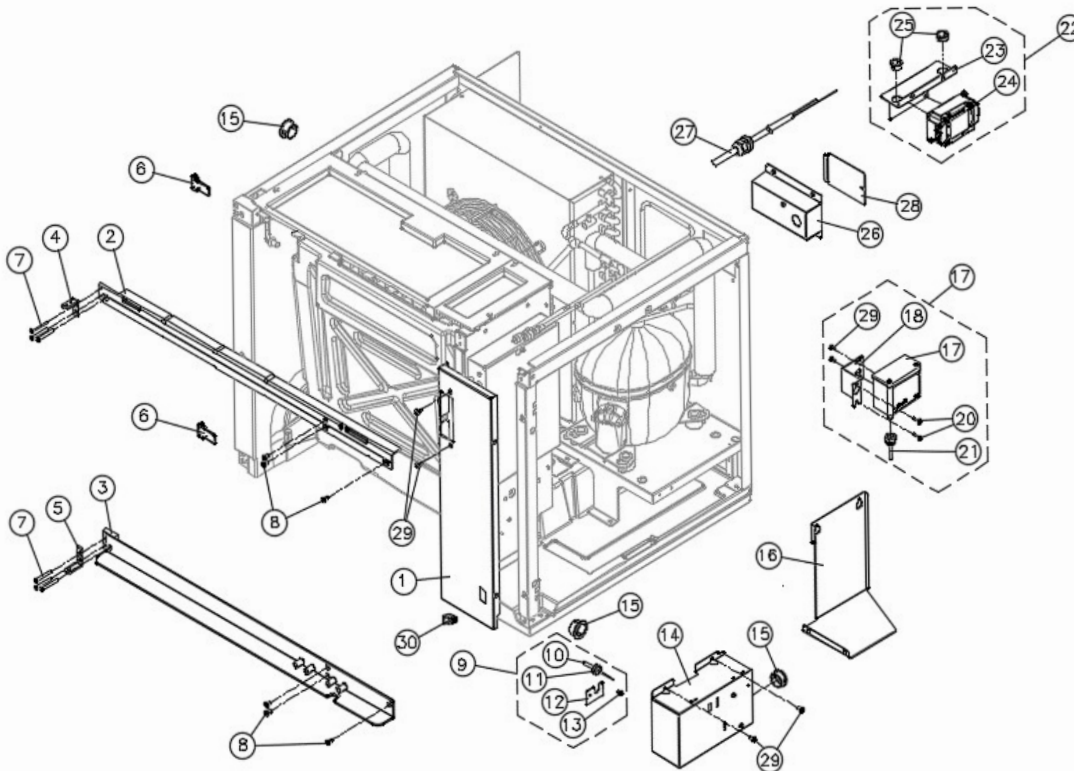
NO	ITEMS	CODE	EXW USD	Q'TY
1	WATER INLET VALVE ASSY	469003010		1
2	WATER INLET HOSE ASSY	469002810		1
3	STRAIGHT ADAPTOR(3/8)	398016500		2
4	WATER INLET VALVE	340027520		1
5	BAND SPRING 17	203003200		1
6	BRAIDED SILICONE HOSE	229027800		0.08
7	BAND SPRING 17	203003200		1
8	TUBE TO HOSE STEM	398014200		2
9	EQUAL ELBOW	398012000		1
10	WATER INLET FIX BRACKET	301173610		1
11	O-RING(AN110)	303036400		1
12	LOCKING CLIP(3/8)	224002000		6
13	MACHINE SCREW(M4x8)	MTCX0816R		2
14	MACHINE SCREW(M4x8)	MTCX0816R		4
15	SOCKET(NPT3/4 - ø20)	215013400		1
16	SOCKET(NPT3/8 - 3/8)	215018700		1
17	WATER IN-OUT BRACKET	301171010		1
18	STEM ELBOW	398013801		2
19	PE TUBE (OD 3/8)	229013500		0.35
20	PIPE INSULATION(ID 10, t5)	306009000		0.35
21	WATER DRAIN VALVE ASS'Y(220V)	469004000		1
22	BRACKET DRAIN VALVE (DELTROL)	301169600		1
23	WATER VALVE	340025800		1
24	DRAIN VALVE TO DRAIN-DELTROL (PVC)	229032100		1
25	BAND SPRING 20	203004200		1
26	BAND SPRING 21	203003300		1
27	MACHINE SCREW(TRUSS HEAD)	MTCX0816R		2
28	TAPPING SCREW(TRUSS M4x16)	TTCQ0826R		2
29				
30				
31				
32				
33				
34				
35				





# IM-1100-AC\_AH

[WATER-THROUGH ASSY ]

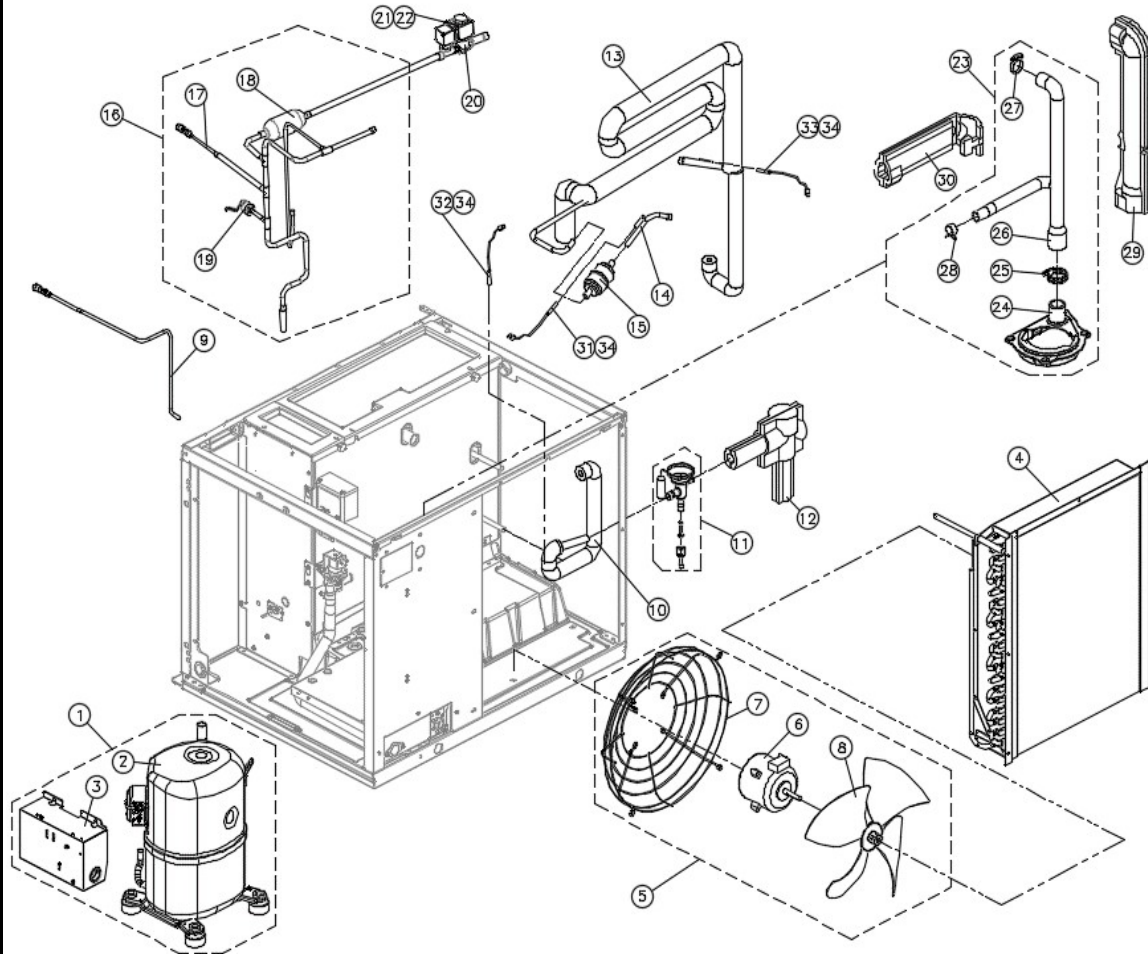


NO	ITEMS	CODE	EXW USD	Q'TY
1	FRONT COVER(C-BOX)	317225620		1
2	FRONT TOP SUPPORT	341012402		1
3	FRONT DOWN SUPPORT	341012502		1
4	HINGE BRACKET (전해연마)	321005120		1
5	HINGE BRACKET DOWN (전해연마) 321005220			1
6	HINGE SUPPORT	341012300		2
7	TAPPING SCREW(FLAT HEAD,전해연마 TFCQ0841R			6
8	MACHINE SCREW(FLAT HEAD,전해연마 MFCX1022R			6
9	MAGNET SENSOR PARTS	701003300		1
10	ASSY SENSOR MAGNET	701002000		1
11	SENSOR CAP	319009300		1
12	COVER BRACKET (M-SENSOR)	301169400		1
13	MACHINE SCREW(TRUSS M4x10)	MTCX0820R		1
14	CAPACITOR BOX	374144010		1
15	GROMMET BUSHING	232003500		3
16	CONTROL BOX SUPPORT	301221500		1
17	PRESSURE SWITCH ASSY #17-20,26			1
18	PRESSURE SWITCH(AUTO RESET) 355012700			1
19	BRACKET D-VALVE & P-SWITCH 301169700			1
20	ADAPTOR (PRESSURE PART) 429010100			1
21	TAPPING SCREW(TRUSS M4x16) TTCQ0826R			2
22	NOISE FILTER ASSY #23*W25			1
23	NOISE FILTER BRACKET 301171111			1
24	NOISE FILTER 500009000			1
25	GROMMET BUSHING 232003600			1
26	JUNCTION BOX 374143800			1
27	POWER CORD ASSY 722017100			1
28	JUNCTION BOX COVER 317197900			1
29	MACHINE SCREW(TRUSS M4x10) MTCX0820R			6
30	ROCKER SWITCH 355025100			1
31				
32				
33				
34				
35				



# IM-1100-AC\_AH

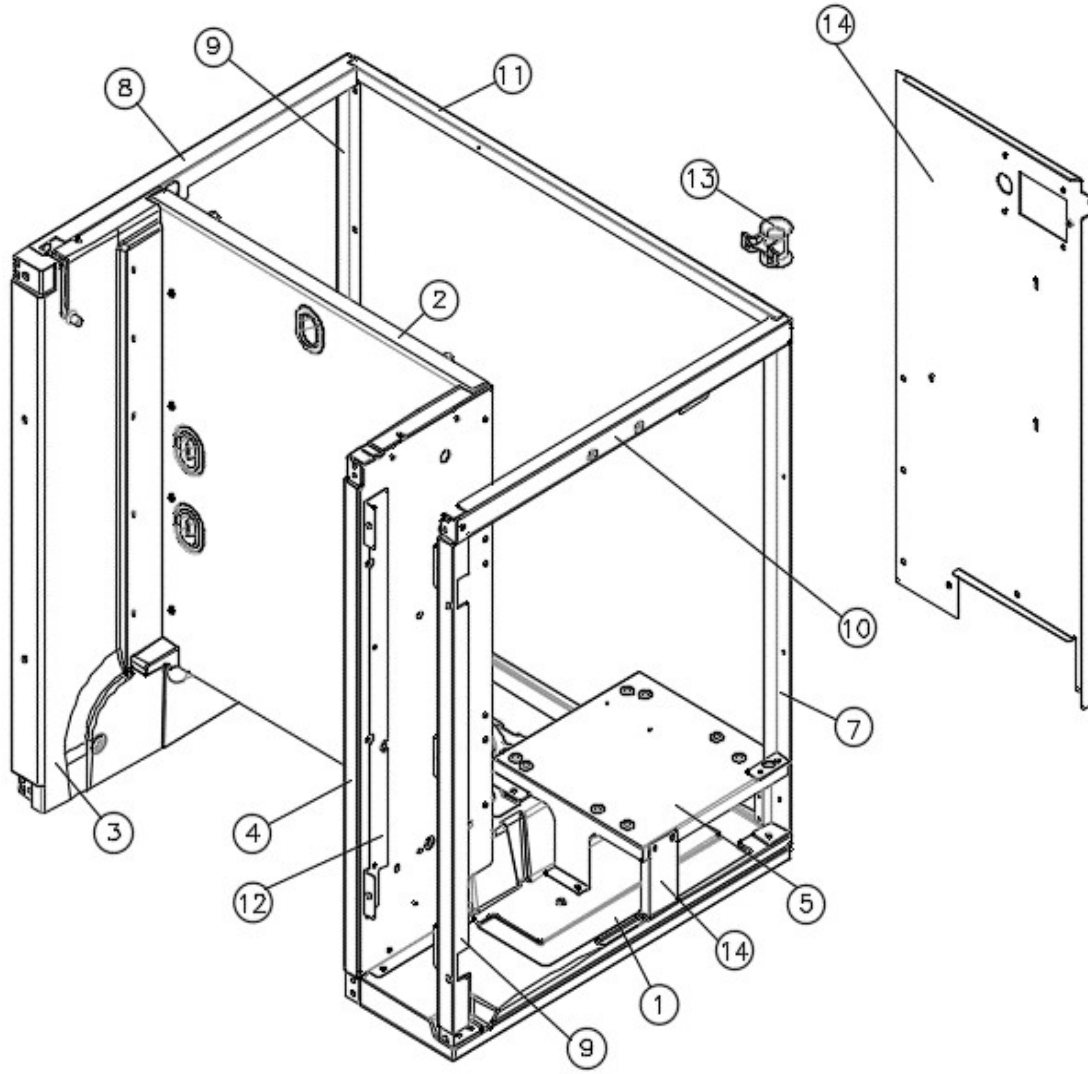
## [ REFRIGERATION PARTS ]



NO	ITEMS	CODE	EXW USD	Q'TY
1	COMP PARTS	#2,#3		1
2	COMP ASS'Y / AWS4524ZNX	394022900		1
3	ASSY CSR BOX (AWS4524ZNX)	426070710		1
4	CONDENSER ASSY	411031800		1
5	FAN MOTOR ASS'Y(220V60Hz)	406023200		1
6	FAN MOTOR(DAI-95254SECC)	353015901		1
7	FAN NET(Φ340)	308001200		1
8	FAN(Φ300,4LIP)	308001800		1
9	EXTENSION CHARGE NIPPLE	325151001		1
10	EXP. VALVE OUTLET PIPE(AIR)	325144400		1
11	EXPANSION VALVE (FLARE)	340004500		1
	EXPANSION VALVE (BRAZE)	340007400		1
				1
12	FOAM PE (TXV)	306016700		1
13	HEAT EXCHANGE PIPE ASSY	433044400		1
14	DRYER INLET PIPE	325144500		1
15	FILTER DRYER	372001300		1
16	DISCHARGE PIPE ASSY(AWS4524)	433044100		1
17	CHARGE NIPPLE ASSY	459000400		1
18	STRAINER	605001800		1
19	ASSY HIGH PRESSURE S/W	429003900		1
20	SOLENOID V/V BODY	340015500		1
21	SOLENOID V/V PLUG (PARKER)	340027300		1
22	SOLENOID VALVE COIL	340026300		1
23	WATER PUMP MOUNT ASSY (DELTROL)	463000410		1
24	WATER PUMP MOUNT	339013500		1
25	BAND HOSE 40	203001400		1
26	PUMP TO DISTRIBUTOR-DELTROL (PVC)	229032800		1
27	CLAMP HOSE(SNP28)	229026600		1
28	BAND SPRING 21	203003300		1
29	FOAM PUMP TO DISTRIBUTOR	306042500		1
30	FOAM PUMP TO DRAIN	306042100		1
31	EVA SENSOR SB(BLACK)	655008200		1
32	EVA SENSOR SB(BLUE)	655008210		1
33	EVA SENSOR SB(YELLOW)	655008220		1
34	SENSOR CLIP	224002400		3

# IM-1100-AC\_AH

## [ BASE & FRAME ASSY ]



NO	ITEMS	CODE	EXW USD	Q'TY
1	BASE PLATE FOAM ASSY	483022200		1
2	EVA. BACK PANEL ASS'Y	422002500		1
3	EVA S-PANEL ASS'Y(L)	420049700		1
4	EVA S-PANEL ASS'Y(R)	420049800		1
5	SUPPORT COMP.	320593620		1
6	SIDE REAR FRAME(L)	348011300		1
7	SIDE REAR FRAME®	348011400		1
8	SIDE TOP FRAME(L)	348010700		1
9	FRONT SIDE FRAME(R)	348020620		1
10	SIDE TOP FRAME(R)	348011800		1
11	REAR TOP FRAME	348010900		1
12	F-COVER BRACKET	317211000		1
13	WATER LEVEL P-HOLDER	339014100		1
14	BACK PANEL(AIR,USA)	349099500		1
15				
16				
17				
18				
19				
20				
21				
22				
23				
24				
25				
26				
27				
28				
29				
30				
31				
32				
33				
34				
35				