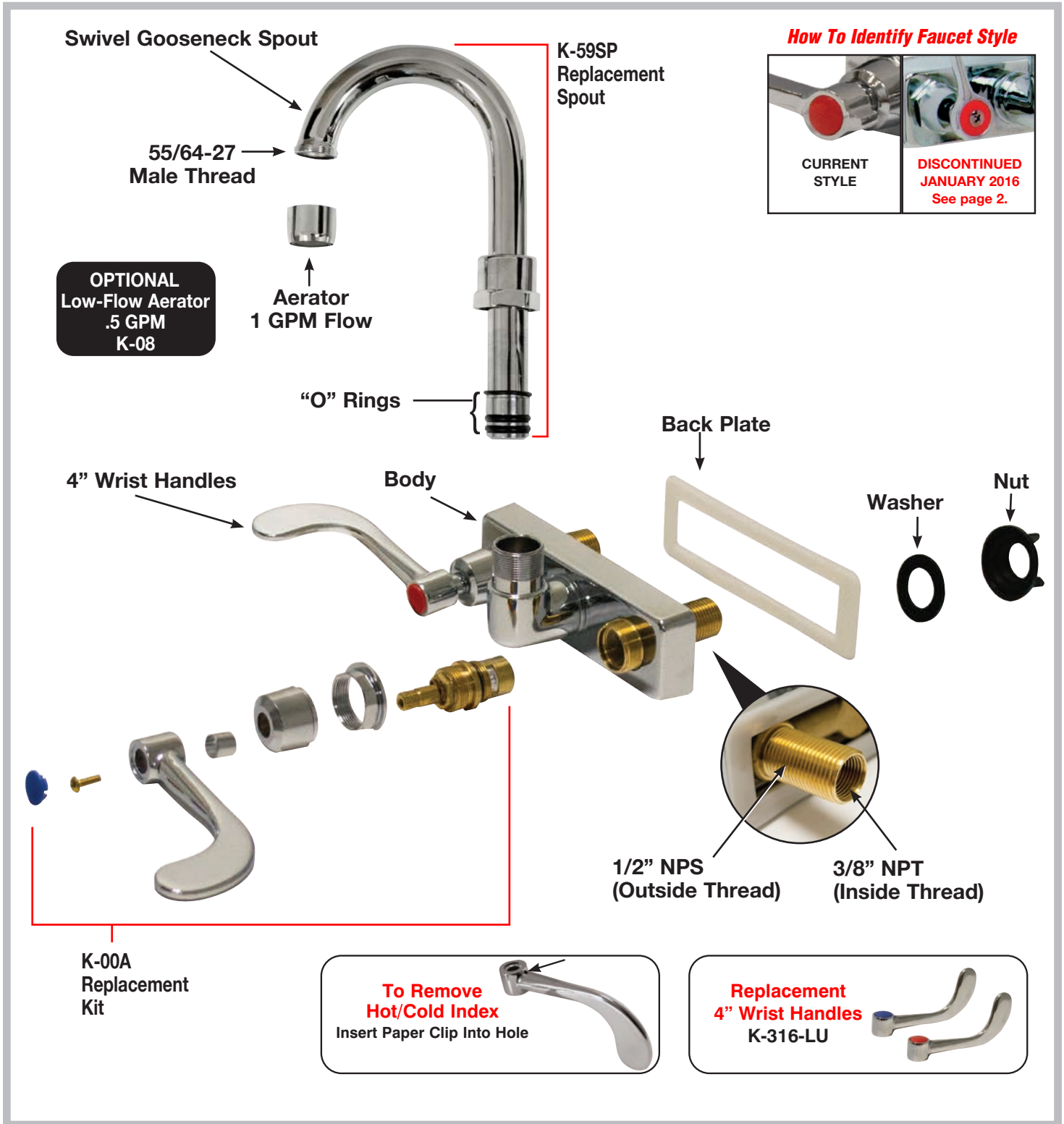


FAUCET PARTS - EXPLODED VIEW

Model: **K-316**

Conforms To NSF 61/9 Lead Free Requirements



WARNING: Faucets on this page may expose you to chemicals, including lead, that are known to the State of California to cause cancer or birth defects or other reproductive harm. For more info., visit www.p65warnings.ca.gov.

Customer Service Available To Assist You 1-800-645-3166 8:30 am - 7:00 pm E.S.T.

For Orders & Customer Service:

Email: customer@advancetabco.com or Fax: 631-242-6900

For Smart Fabrication™ Quotes:

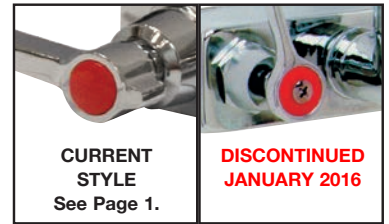
Email: smartfab@advancetabco.com or Fax: 631-586-2933

FAUCET PARTS - EXPLODED VIEW

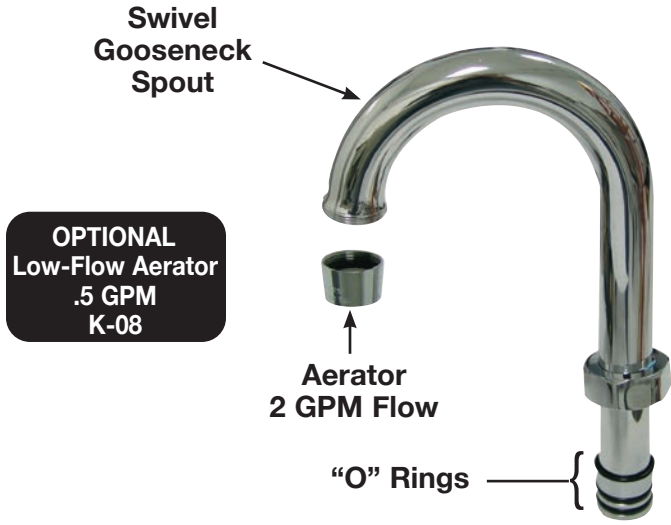
Model: K-316 *Discontinued Style as of January 2016*

Conforms To NSF 61/9 Lead Free Requirements

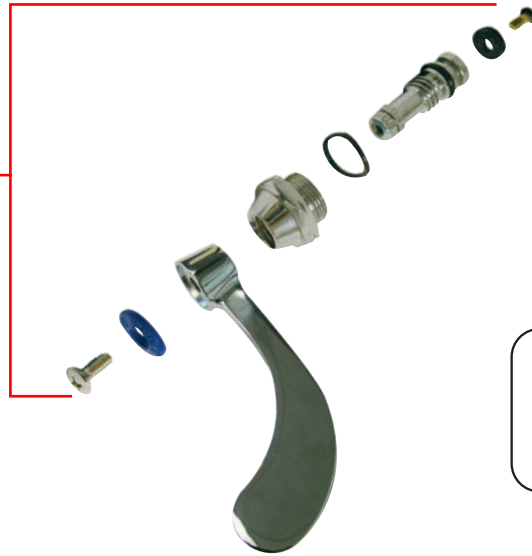
How To Identify Faucet Style



Limited Quantity of Parts For Discontinued Faucets Available. Contact Factory.



K-00 Replacement Kit. Please add Model # K-316-LU



1/2" NPS (Outside Thread) 3/8" NPT (Inside Thread)

Replacement 4" Wrist Handles

*Limited Quantity Available
Contact Factory*



WARNING: Faucets on this page may expose you to chemicals, including lead, that are known to the State of California to cause cancer or birth defects or other reproductive harm. For more info., visit www.p65warnings.ca.gov.