

FORM NUMBER

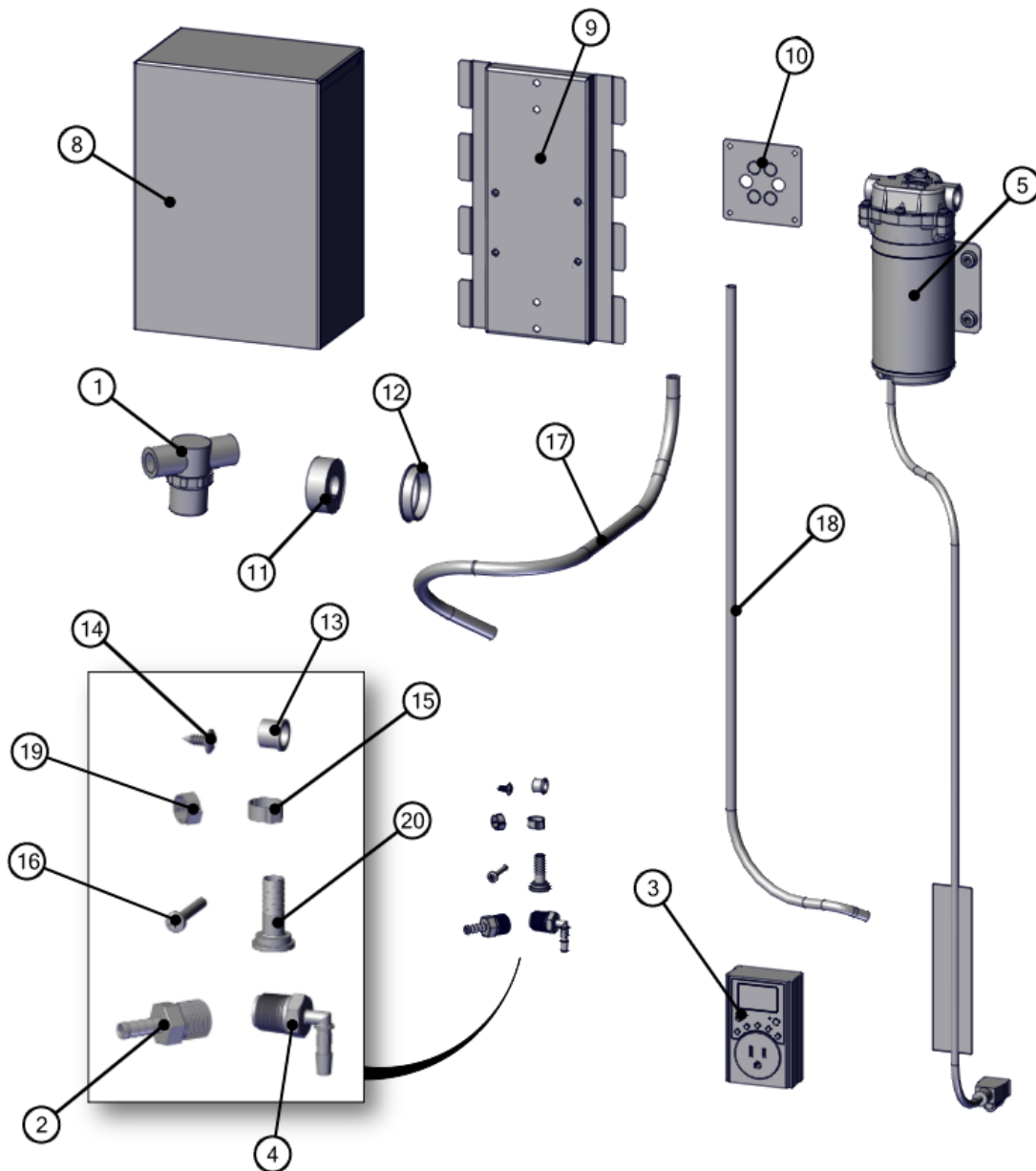
KCTCLD-X-SRVI

PART DESCRIPTION

PARTS BAG, TOWER CONNECTION, LONG DRAW



Since 1917



TOOLS REQUIRED

Philips Head Screwdriver

Hammer

Pliers

Tab Clamp Crimping Tool

Drill

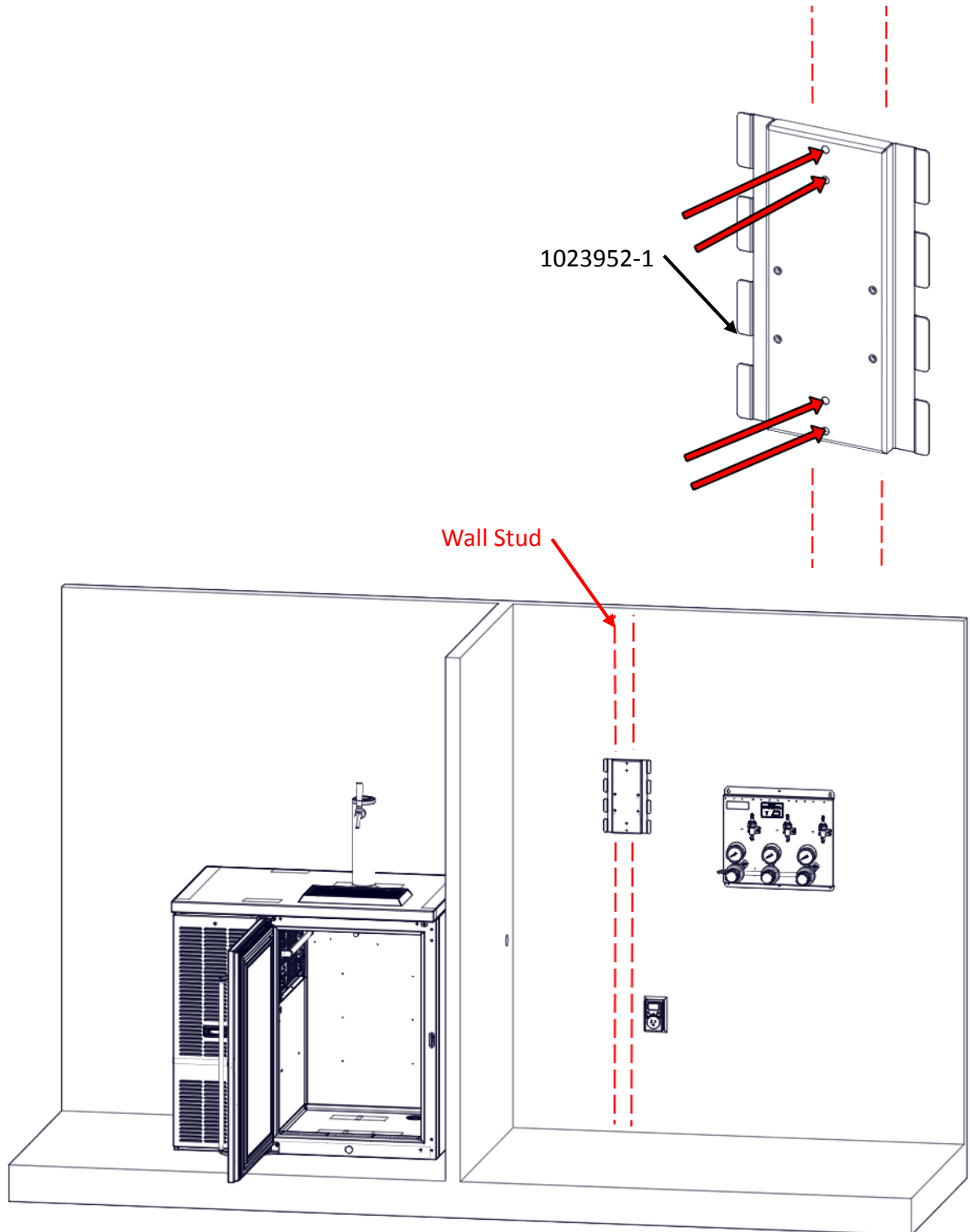
10-32 Drill Bit

PARTS LIST

Item #	Part #	Description
1	1013378	FILTER, IN-LINE, PUMP, CRAFT COCKTAIL MIXING TANK
2	1013145	NIPPLE, 3/8" MPT X 1/4" BARB, 304 STAINLESS STEEL
3	1013381	TIMER, SWITCH OUTLET, PROGRAMMABLE, PLUG-IN
4	1024511	ELBOW, 1/4" ID HOSE X 3/8" NPT
5	1013289	PUMP, 3 CHAMBER DIAPHRAGM, 115 VAC, 3/8" CONNECT PORTS
6	1007859	REGULATOR MANIFOLD, SECONDARY CO2, 1 FAUCET, 1/4" BARB
8	1024282-1	PANEL, PUMP COVER, MIX COCKTAIL
9	1023952-1	BRACKET, PUMP MOUNTING, MIX COCKTAIL
10	1024478-1	PANEL, TUBE INLET, MIX COCKTAIL
11	70123-1	DOUGHNUT PLUG, 2" OD X 7/8" ID
12	C15967	SNAP BUSHING, 2.00", NYLON,
13	C14879	BUSHING, SNAP, .391"ID, NYLON,
14	M50050-466	#10X1/2" PH.TRUSS FULL CONTOUR HD.SMS#410SS, TY
15	C33037	CLAMP, STEPLESS EAR, .453-.551 RANGE, STAINLESS STEEL
16	M00494-129	SCREW, MACHINE,#10-32 X 1 1/4" PH PAN HD, STEEL, ZINC PLATED
17	1392R-250	AIR HOSE, RED, 1/2"OD X 1/4"ID 100' SPOOL, **NO PRINTING**
18	67740	TUBING, 1/4"ID, WINE, FLAVOUR LOCK,BARRIERMASTER,500 FT.ROLL
19	54871-123	CLAMP, STEPLESS EAR, .386-.484 RANGE, STAINLESS STEEL
20	67748	TAILPIECE,304SS,1/4"

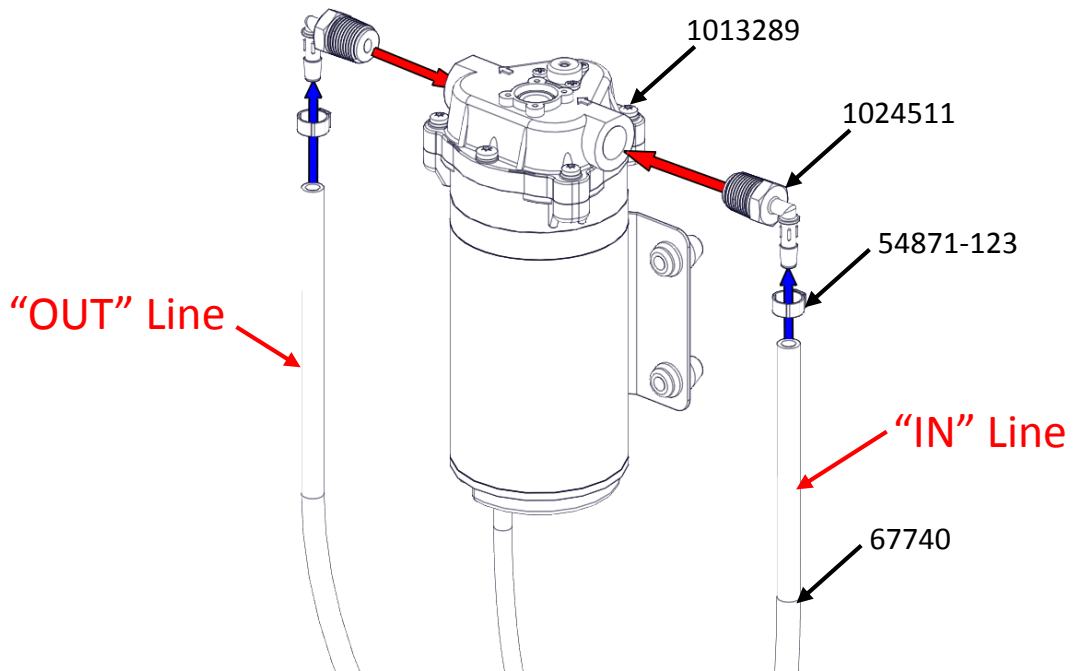
OPERATION #1

1. Once the Keg position has been determined, the position of the pump can be made.
2. Secure Pump Bracket (1023952-1) to the wall with four screws acceptable to local construction code. Bracket must be within 6 feet of an outlet



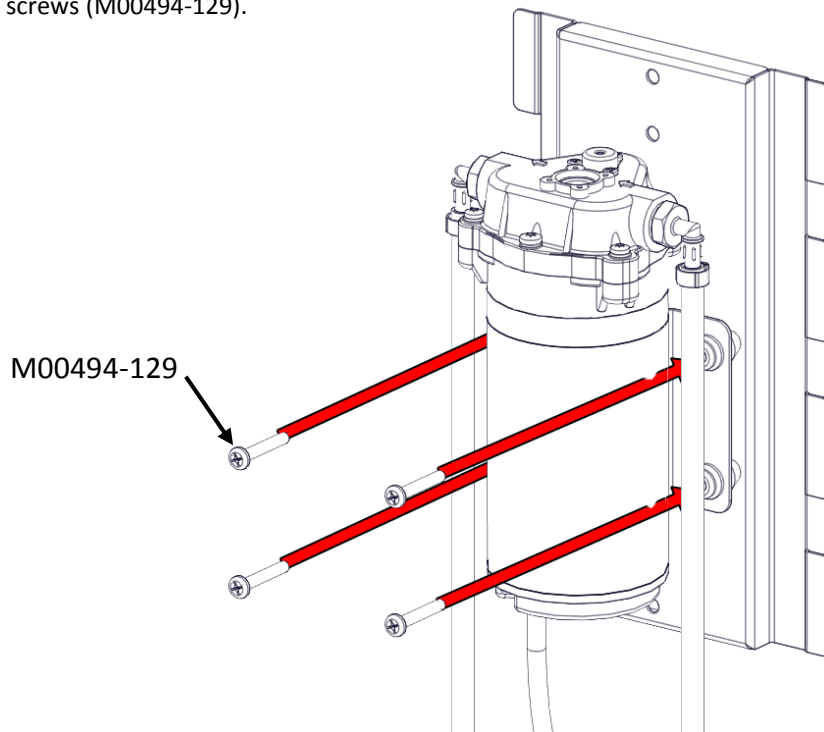
OPERATION #2

1. Tighten one Elbow (1024511) to each side of the pump (1013289).
2. Secure taste locking tubing (67740) to each Elbow with one Clamp (54871-123) each.
3. Mark the ends to the tubes in a manner that helps identify the "IN" and "OUT" line.



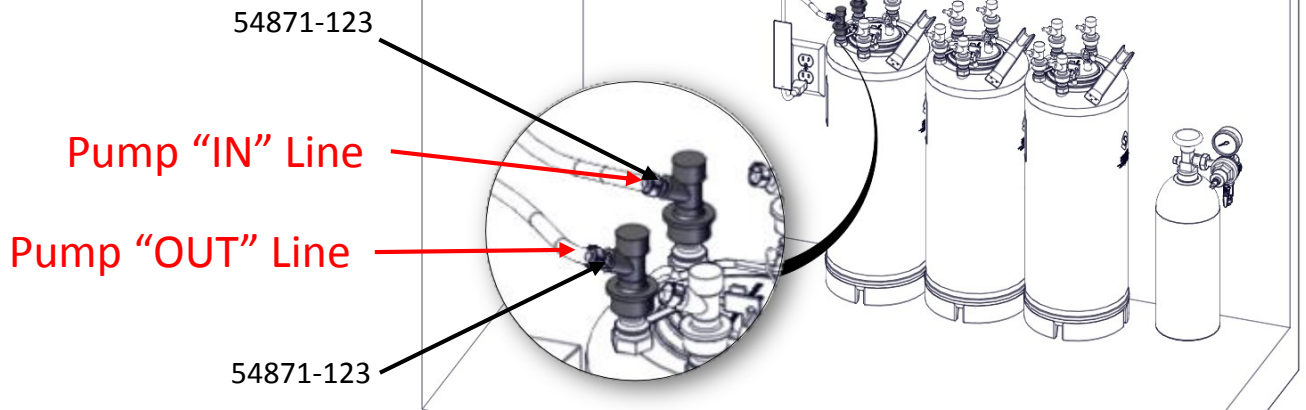
OPERATION #3

1. After tubes are secured to the pump, mount the pump to the pump bracket with four #10-32 X 1 1/4" Pan head screws (M00494-129).



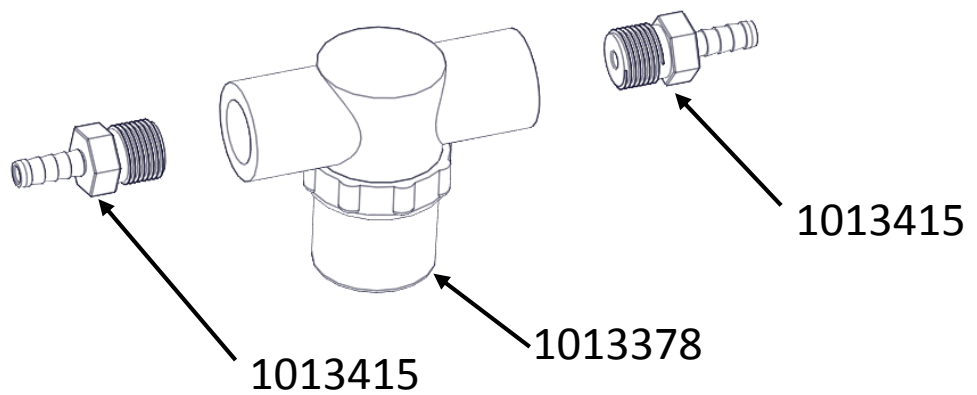
OPERATION #4

1. Attach the "IN" Line from the pump to the "OUT" Disconnect of the Keg with one clamp (54871-123).
2. Attach the "OUT" Line from the pump to the "IN" Disconnect of the Keg with one clamp (54871-123)



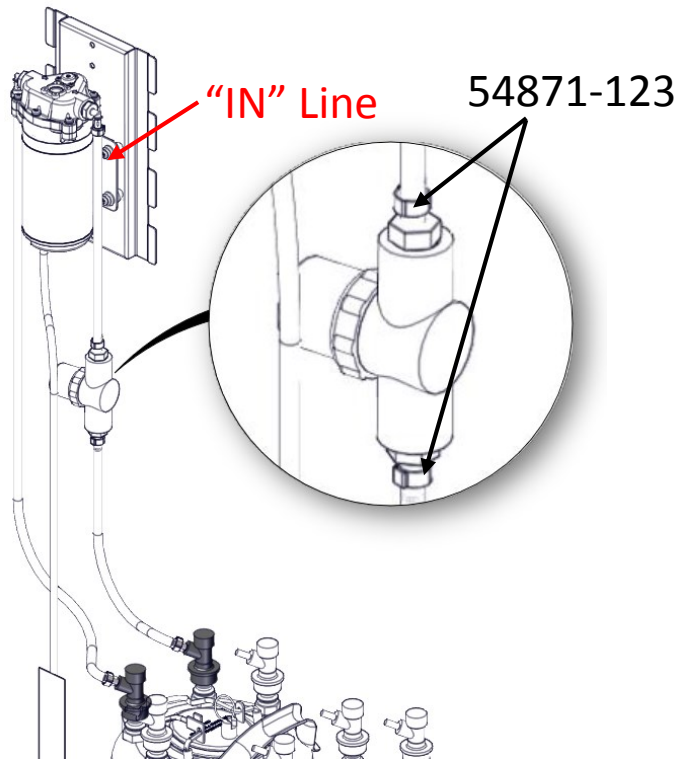
OPERATION #5

1. Secure one barb (1013415) to each side of the filter (1013378).



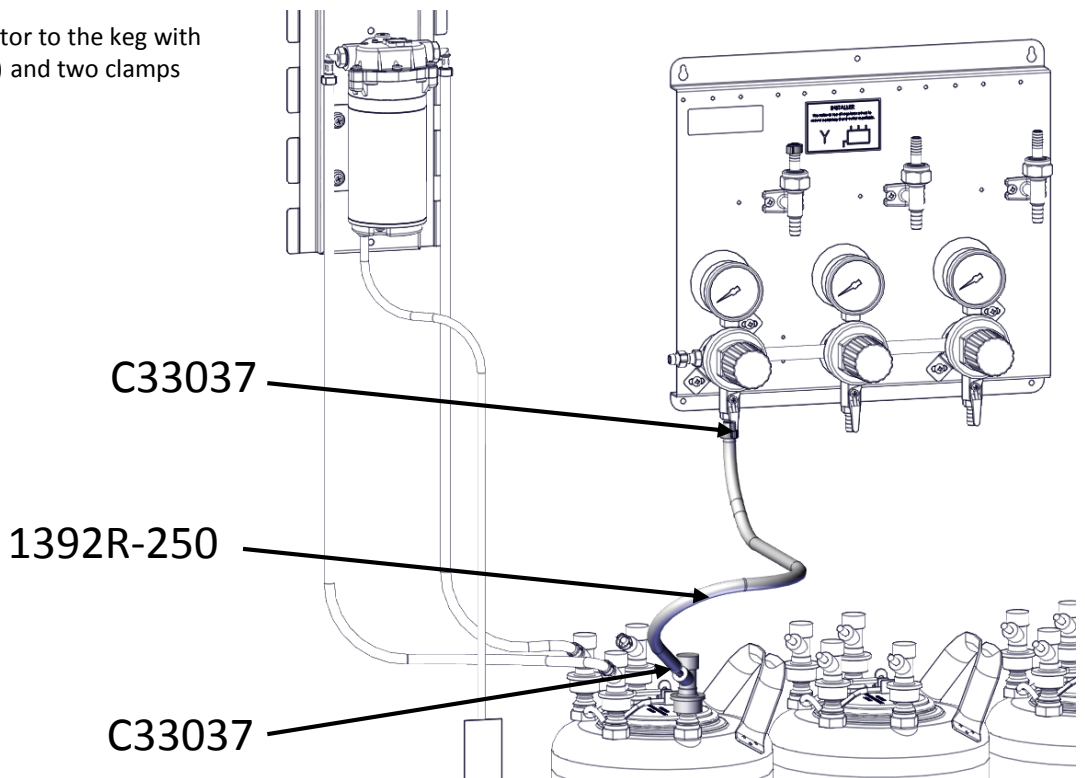
OPERATION #6

1. Attach the filter by first cutting the pump "IN" Line.
2. Attach the filter (1013378) to the two sections of taste locking tubing with one clamp (54871-123) each.



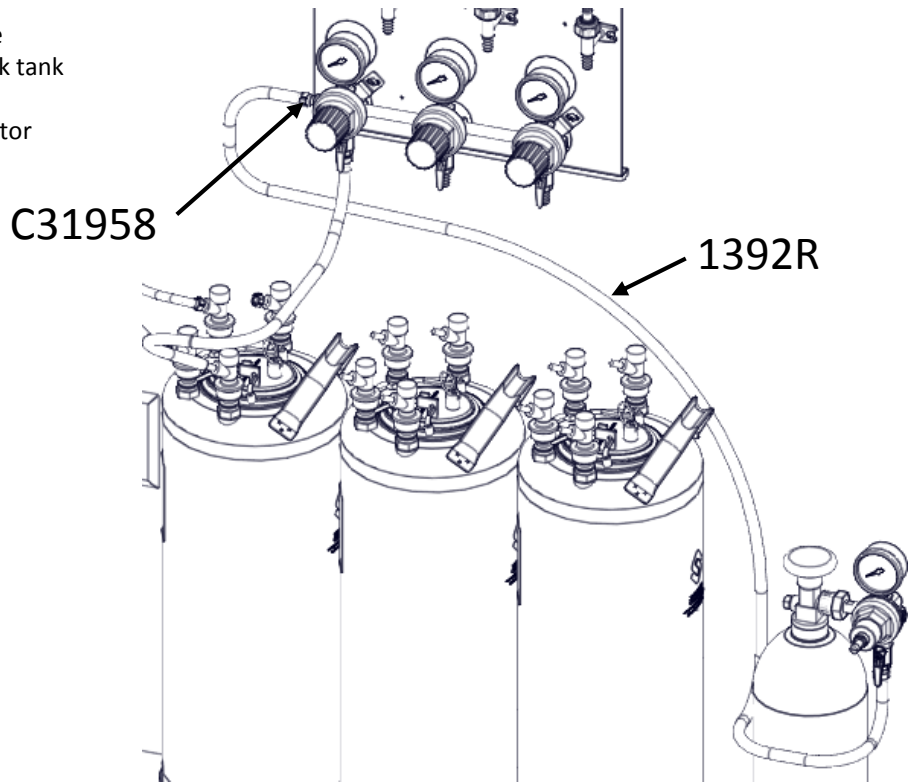
OPERATION #7

1. Attach the regulator to the keg with hose (1392R-250) and two clamps (C33037).



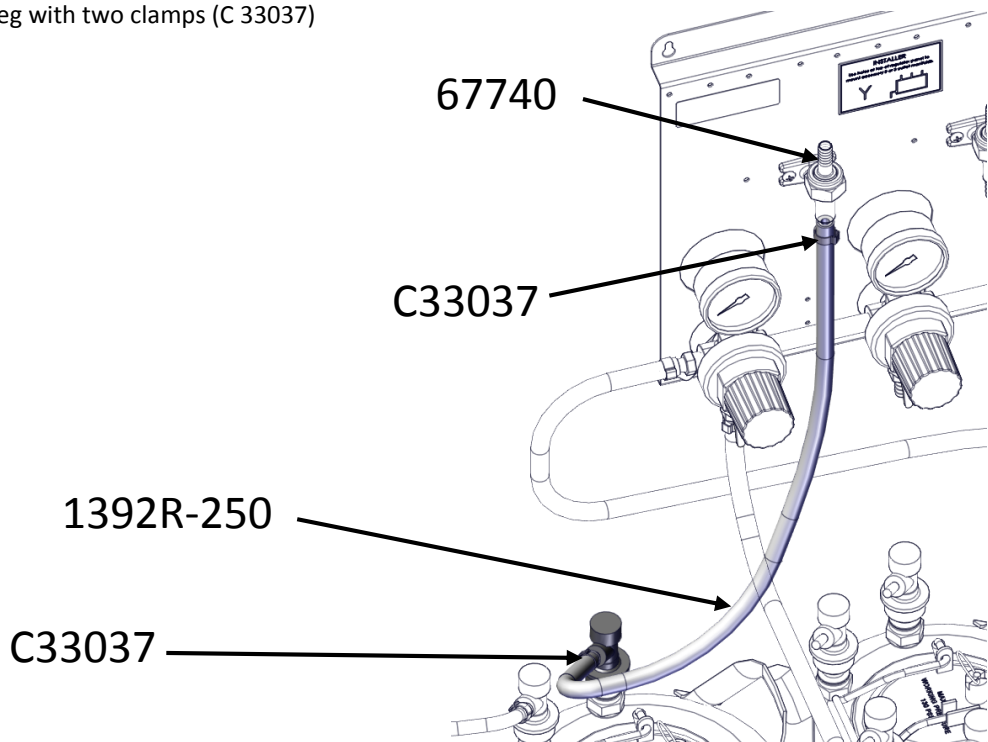
OPERATION #8

1. Attach the gas line (1392R) to the Perlick Gas tank (1013578) or bulk tank if already on hand at location.
2. Attach gas hose to the keg regulator using clamp (C31958)



OPERATION #9

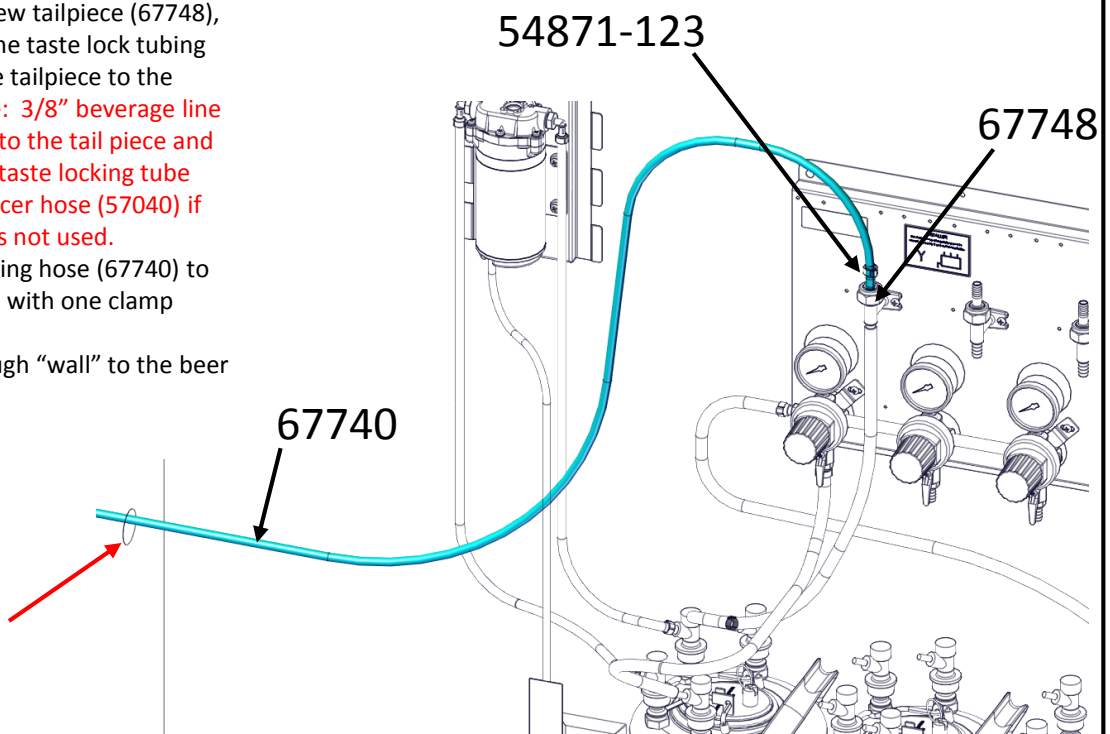
1. Attach a sections of hose (1392R-250) to the tail piece and keg with two clamps (C 33037)



OPERATION #10

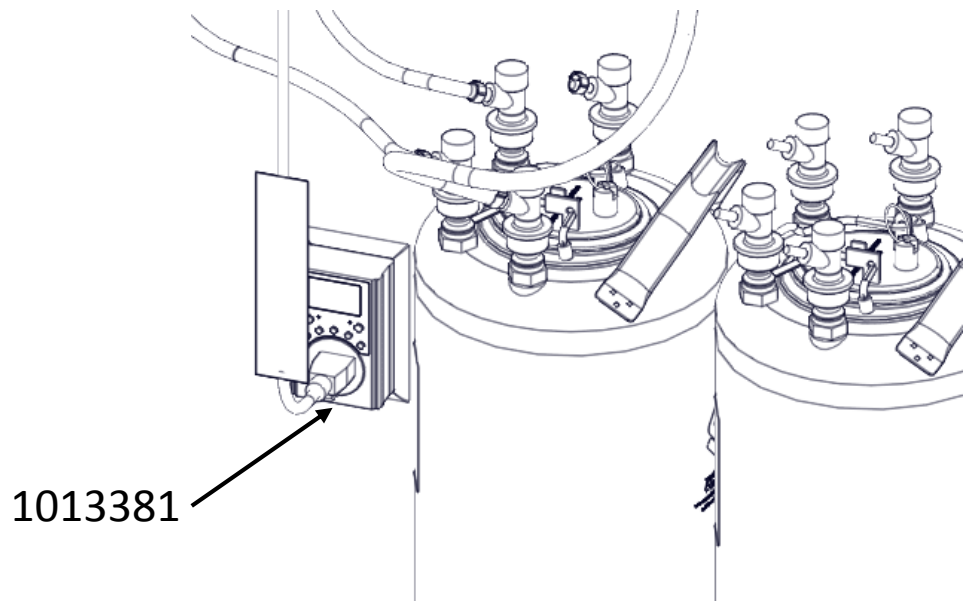
1. Remove the current tailpiece and replace it with new tailpiece (67748), In order to use the taste lock tubing (67740) from the tailpiece to the dispenser. **Note: 3/8" beverage line can be attached to the tail piece and then split to the taste locking tube (66740) with splicer hose (57040) if tailpiece 67748 is not used.**
2. Attach taste locking hose (67740) to tailpiece (67748) with one clamp (54871-123).
3. Run tubing through "wall" to the beer dispensers

Run line through bushing



OPERATION #11

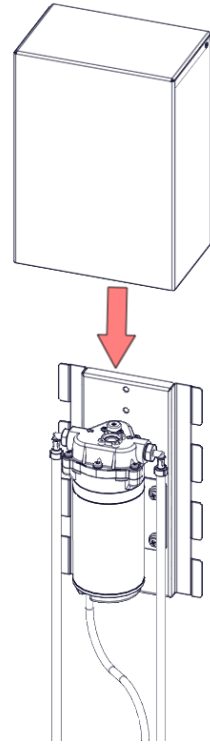
1. After all lines are hooked up, program the timer (1013381) using the instructions that is supplied with it.
2. Plug the timer into the wall and then the pump into the timer.



OPERATION #12

1. Slide the pump cover (1024282-1) over the pump.

1024282-1

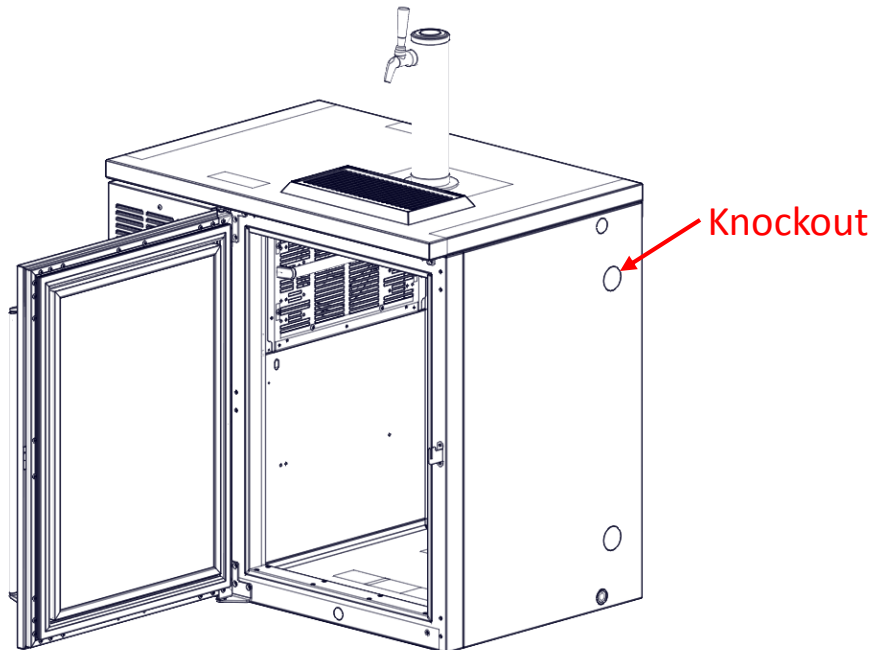


Routing beverage lines to Cabinet.

If beverage lines are being ran into a Perlick dry cabinet dispensing unit.
Please continue to the next operation.

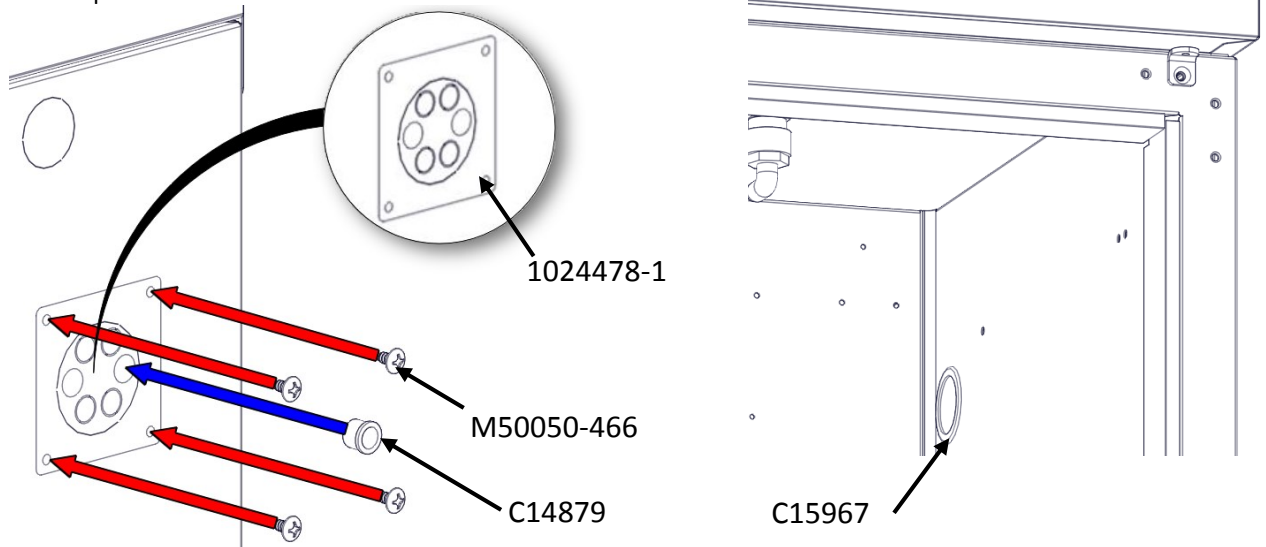
OPERATION #13

1. With a flat head screwdriver and hammer, punch out the knockout (inner and outer) on the sidewall of the unit.
2. Once both knockouts are removed, remove the insulation between the inner and outer wall.



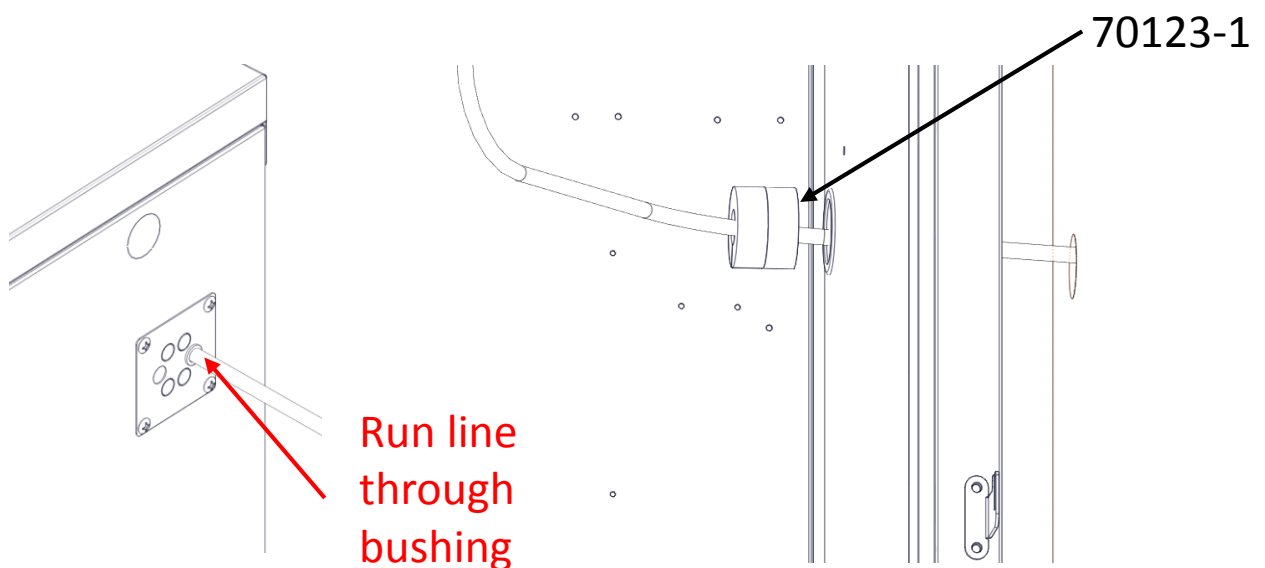
OPERATION #14

1. Place bracket 1024478-1 up against the side wall so that it covers the hole from the previous step.
2. Once aligned, mark the four holes in the corner of 1024478-1 onto the cabinet with a marker.
3. Drill out the four holes with a #30 drill bit.
4. Knock out two of the holes in 1024478-1. These will be used to run the beverage lines through.
5. Secure 1024478-1 to the side wall with four M50050-466.
6. Snap one C14879 into 1024478-1.
7. Snap one C15967 into the hole on the inside wall.



OPERATION #15

1. Feed the tube line from the pump into the cabinet
2. Once the tube lines are feed into the unit, insert two pieces of foam (70123-1) into the side wall hole to help insulate the unit.
3. Attach taste locking tubing to the dispenser with one clamp (54871-123)



9/27/2019

REV #	ECO #	DESCRIPTION	DATE	NAME
A	2019-0655	NEW RELEASE	9/23/2019	KDS

10