

**INSTRUCTIONS FOR  
OPERATION, SERVICE, AND MAINTENANCE  
KG-12-FS  
PRO-CUT MEAT GRINDER**



507127-0

**INSTRUCTIONS FOR  
OPERATION, SERVICE, AND MAINTENANCE  
KG-12-FS PRO-CUT MEAT GRINDER**

**CONTENT**

	<b>PAGE</b>
<b>I. INTRODUCTION</b>	<b>2</b>
<b>II. UNPACKING</b>	<b>3</b>
<b>III. INSTALLATION</b>	<b>3</b>
<b>IV. OPERATION</b>	<b>4</b>
<b>V. KEY ELEMENTS FOR HIGH QUALITY PRODUCT GRINDING</b>	<b>4</b>
<b>VI. CLEANING</b>	<b>4</b>
<b>VII. MAINTENANCE</b>	<b>5</b>
<b>VIII. ELECTRICAL SPECIFICATIONS KG-12-FS</b>	<b>6</b>
<b>IX. ELECTRICAL DIAGRAM KG-12-FS</b>	<b>7</b>
<b>X. PARTS LIST KG-12-FS</b>	<b>8</b>

**I.- INTRODUCTION:**

CONGRATULATIONS YOU HAVE ACQUIRED A PRO-CUT MEAT GRINDER, WHICH IS MADE OF HIGH QUALITY LONG LASTING MATERIALS THAT SHOULD GIVE YOU YEARS OF TROUBLE FREE OPERATION AND SERVICE.

**BEFORE YOU UNPACK YOUR NEW PRO-CUT GRINDER, IT IS VITAL THAT YOU AND ANY PERSON THAT WILL OPERATE THIS UNIT THOROUGHLY READ THIS MANUAL.**

**WARNINGS:**

- **THIS MACHINE IS DESIGNED TO GRIND AND CUT FOOD PRODUCTS AND IS BY NATURE DANGEROUS IF NOT USED AND MAINTAINED PROPERLY FOR OPTIMUM SAFETY.**
- **DO NOT ALLOW UNTRAINED, UNQUALIFIED PERSONNEL OR CHILDREN TO OPERATE THIS EQUIPMENT.**
- **NEVER PERFORM SERVICE, CLEANING OR MAINTENANCE ON THIS UNIT WHILE CONNECTED TO A POWER SOURCE.**

- **NEVER USE HANDS OR FINGERS TO FEED PRODUCT INTO THE BOWL AREA, ALWAYS USE THE STOMPER OR PUSHER (1)\* INCLUDED IN PACKAGE.**
- **DO NOT LEAVE THE MACHINE UNATTENDED WHILE IN OPERATION.**
- **THIS EQUIPMENT MUST BE CONNECTED TO A THERMALLY PROTECTED OUTLET.**

**NOTE:** FOR ID NUMBERS REFER TO THE CORRESPONDING DRAWING AT THE END OF THIS MANUAL

## **II.- UNPACKING:**

1.- WHILE UNPACKING MACHINE TAKE SPECIAL CARE IN REMOVING THE COMPONENTS AND MAKE SURE THAT ALL ARE ACCOUNTED FOR.

LOOK FOR THE FOLLOWING ITEMS:

- 1 COMPLETE GRINDING UNIT; INCLUDING HEADSTOCK (13), FEED SCREW (16), HEADSTOCK RING (20), KNIFE (18) AND PLATE (19) .
- 1 STOMPER OR PUSHER (1).
- 1 PRODUCT TRAY (2).
- 4 RUBBER LEGS (4) (FOR MODEL KG-12-FS).
- 1 SUPPORT TRAY (10) (FOR MODEL KG-12-FS).
- 1 WRENCH (29) FOR SUPPORT TRAY NUTS (FOR MODEL KG-12-FS)
- 1 BOTTLE (25) OF FDA APPROVED GREASE.

## **III.- INSTALLATION:**

1.- BEFORE CONNECTING THE MACHINE TO THE POWER SUPPLY, PLEASE FOLLOW THESE EASY ASSEMBLY AND PREPARATION STEPS:

A.- REMOVE HEADSTOCK RING(20) FROM HEADSTOCK(13) BY ROTATING COUNTERCLOCKWISE, PULL OUT KNIFE(18) , PLATE(19) AND FEED SCREW(16). ALSO UNSCREW THE KNOB(8) TO ALLOW REMOVAL OF GRINDING HEADSOCK(13).

B.- WASH WITH AN APPROVED DETERGENT, RINSE AND DRY THE FOLLOWING COMPONENTS: HEADSTOCK(13), FEED SCREW(16), HEADSTOCK RING(20), KNIFE(18), PLATE(19) , STOMPER(1), AND TRAY(2).

C.- REASSEMBLE THE COMPONENTS THAT WERE REMOVED FOR WASHING BY FOLLOWING THE REVERSE ORDER IN LETTER "B", BE SURE THAT THE SHARP END OF THE KNIFE(18) FACES FORWARD, AND THAT THE NOTCH OF THE PLATE(19) ALIGNS WITH THE PIN(9) ON THE BOTTOM OF THE HEADSTOCK (SEE DETAIL "B"). WHEN TIGHTENING THE HEADSTOCK RING(20), TENSION SHOULD BE FIRM BUT NOT TOO TIGHT, USE ONLY HAND FORCE.

E.- INSTALL THE PRODUCT TRAY(2):  
MODEL KG-12-FS: WITHDRAW THE NUTS(22) AND WASHERS(21), PUT THE SUPPORT TRAY(10) AND REPLACE WASHERS(21) AND SCREW NUTS(22) WITH WRENCH(29) INCLUDED WITH THE UNIT, NOW INSERT THE NECK OF THE TRAY(2) INTO THE HEAD STOCK (13) AND PLACE THE BACK PART OF THE TRAY(2) ONTO THE SUPPORT TRAY(10).

F.- PLACE THE STOMPER(1) INTO THE TRAY'S NECK.

- 2.- PLACE THE GRINDER ON A FIRM AND CLEAN SURFACE THAT HAS ACCESS TO AN ELECTRICAL POWER SOURCE, AND BE SURE IT MEETS THE POWER REQUIREMENTS OF THE UNIT. (IF YOU HAVE ANY QUESTIONS PLEASE CONTACT YOUR PRO-CUT DEALER).
- 3.- ASSURE THAT ALL LOCAL ELECTRICAL CODES ARE COMPLIED WITH.
- 4.- AFTER PREVIOUS STEPS WERE FOLLOWED, CONNECT THE GRINDER TO THE POWER SOURCE, MAKING SURE THAT IT IS PROPERLY GROUNDED AND IF YOU HAVE ANY QUESTION, PLEASE CONTACT A QUALIFIED ELECTRICIAN.

#### **IV.- OPERATION:**

##### **IMPORTANT:**

FOR THE FIRST TIME USAGE, GRIND 2 POUNDS OF SCRAP CLEAN PRODUCT TO REMOVE ANY FOREIGN DEBRIS.

THE NORMAL PROCEDURE TO OPERATE A GRINDER IS AS FOLLOWS:

- 1.-TURN ON THE MACHINE. **(DO NOT LEAVE MACHINE UNASSISTED WHILE IN OPERATION).**
- 2.- PLACE PRODUCT ON THE REAR OF FEED TRAY(2).
- 3.- SCOOP PRODUCT TOWARDS THE FEED OPENING AND LET IT FALL.
- 4.- IF IT IS NECESSARY PUSH THE PRODUCT DEEPER INTO THE NECK ONLY WITH THE PROVIDED STOMPER(1) **(DO NOT USE HANDS, FINGERS OR FOREIGN OBJECTS TO FEED PRODUCT INTO THE HEADSTOCK(13) CHAMBER).**

#### **V.- KEY ELEMENTS IN GRINDING QUALITY PRODUCT:**

- IT IS NOT RECOMMENDED TO FORCE FEED PRODUCT INTO THE HEADSTOCK(13) CHAMBER.
- ALWAYS ASSURE THAT THE KNIFE(18) AND PLATE(19) ARE SHARP AND FREE OF FOOD DEBRIS.
- IT IS A GOOD IDEA TO USE THE KNIFE(18) AND PLATE(19) AS A SET.
- THE TENSION ON THE HEADSTOCK RING(20) SHOULD BE FIRM BUT NOT TOO TIGHT. OVERTIGHTENING CAN LEAD TO EXCESSIVE FRICTION, MOTOR(28) WEAR AND POOR PRODUCT APPEARANCE.

#### **VI.- CLEANING:**

**ALWAYS UNPLUG OR DISCONNECT THE MACHINE FROM THE POWER SOURCE BEFORE CLEANING OR SERVICE.**

ON A DAILY BASIS IT IS RECOMMENDED TO FOLLOW THESE STEPS:

- 1.- DISASSEMBLE MAIN COMPONENTS AS IT WAS EXPLAINED ON THE INSTALLATION SECTION.
- 2.- WASH ALL COMPONENTS WITH AN APPROVED DETERGENT.
- 3.- RINSE, DRY AND INSPECT ALL COMPONENTS FOR WEAR AND SHARPNESS.

- 4.-TO CLEAN CASE (5) ENCLOSURE USE DAMP CLOTH WITH DETERGENT (NEVER HOSE DOWN OR SUBMERGE CASE ENCLOSURE IN WATER OR OTHER LIQUID). RINSE WITH A DAMP CLOTH AND DRY.
- 5.- REASSEMBLE THE MAIN COMPONENTS TAKING CARE OF THE PIN(9) ALIGNMENT IN THE HEAD WITH THE NOTCH ON THE BOTTOM OF THE PLATE . (SEE DETAIL “B”)

**VII.- MAINTENANCE:**

**ALWAYS UNPLUG OR DISCONNECT THE MACHINE FROM THE POWER SOURCE BEFORE CLEANING OR SERVICE.**

- 1.- TO ASSURE QUALITY PRODUCT, YOUR KNIFE(18) AND PLATE(19) MUST HAVE SHARP EDGES, REGULARLY REPLACE OR SEND FOR SHARPENING THESE COMPONENTS.
- 2.- RELUBRICATE THE NYLON WASHER (15) REGULARLY WITH THE GREASE INCLUDED IN THE BOTTLE(25) INSPECT AND REPLACE WHEN NO LONGER SERVICEABLE.

**NOTE: A SYMPTOM TO RECOGNIZE A WORN NYLON WASHER(15) IS BY TIGHTEN THE RING TOTALLY WITHOUT OBTAINING PROPER TENSION BETWEEN PLATE(19) AND KNIFE(18) .**

- 3.- THE GEAR BOX OF THIS GRINDER IS SEALED AND SHOULD BE SERVICED ONLY BY APPROVED TECHNICIAN, THE TRANSMISSION OIL SHOULD BE CHANGED AT LEAST EVERY TWO (2) YEARS OF NORMAL OPERATION.
- 4.- TO INSURE QUALITY PRODUCT, REGULARLY REPLACE OR SEND FOR SHARPENING THESE COMPONENTS:

REVIEW BY CONSUMER	FREQUENCY OF VERIFICATION	COMMENTS
BLADE (18) PLATE (19)	ONCE A MONTH	CHECK THE APPEARANCE OF THE PLATE AND THE EDGE OF THE KNIFE. THESE MUST BE SUBMITTED NO SCRATCHES. IF THE MEAT HAS A BAD PRESENTATION PLATE AND BLADE.
MEMBRANES (ON-OFF)	DAILY	CHANGE IS REQUIRED IMMEDIATELY MEMBRANE SWITCH BREAK IN CASE OF FAILURE TO PREVENT POST ON OR OFF THE INTRODUCTION OF MOISTURE OR OTHER DEBRIS.
TRANSMISSION OIL	EVERY YEAR AND A HALF	ASSESS OIL LEVEL IN ORDER TO VERIFY THE VOLUME (SEE INSTRUCTIONS FOR EVALUATION). IN THE ABSENCE FILL AND / OR BENEFIT FOR NEW OIL CHANGE (CHECK WITH YOUR DEALER).
WORM (16)	ONCE A MONTH	VALIDATE THAT THERE IS NO EXCESS OF GAME THAT ALLOWS THE BLADE CAN ROTATE ABOUT THE PIN (DOWEL THEN REPLACE). SPIKE REAR. REVISION APPLY BETWEEN ITSELF AND REAR SPINDLE GEAR FRAME.
HEADSTOCK (13)	ONCE A MONTH	CHECK FRONT HEAD SCREW TO PREVENT ACCIDENTS BAD NUT ASSEMBLY. SURE GRIP LEVER NOT BE A STICKING WITH THE CABINET WHEN "HOLD THE HEAD", IF THE HEAD IS SAFARCE COULD LOOSE, IT INDICATES THAT IT IS TIME TO CHANGE THE HEAD.

REVIEW BY CONSUMER	FREQUENCY OF VERIFICATION	COMMENTS
HEADSTOCK RING (20)	ONCE A YEAR	PART REVIEW THREAD SO PREVENT ACCIDENTS BAD JOIN IN THE HEAD
MOTOR AND SWITCH	DAILY	NOT ON THE TEAM WITH THE HEAD FULL OF PRODUCTS AND / OR BECAUSE THIS CAUSES ATOR HIGHER AMPERAGE PEAKS ENGINE DAMAGE AND /OR SWITCH.

5.- PARTS TO CARE FOR WEARING OUT:

TIME	PARTS TO REVIEW AND CHANGE
1 MONTH	NYLON WASHER (15)
6 MONTHS	KNIFE (18) PLATE (19)
2 YEARS	TRANSMISSION OIL
4 -5 YEARS	WORM (16) HEADSTOCK (13)

*NOTE: THE TIME IS AN AVERAGE PERIOD, ITS DEPEND ON THE USAGE.  
The kind of oil is SAE 80W90 or equivalent, the quantity is ¾ of liter.*

**VIII.- ELECTRICAL SPECIFICATIONS**

MODEL	VOLTAGE	FRECUENCY	CURRENT	PHASES	MOTOR POWER
KG-12-FS	115 V~	60 HZ	10,4 A	1 Ø	559 W 3/4 (HP)

IX.- ELECTRIC DIAGRAM KG-12-FS:

SIMBOLOGIA

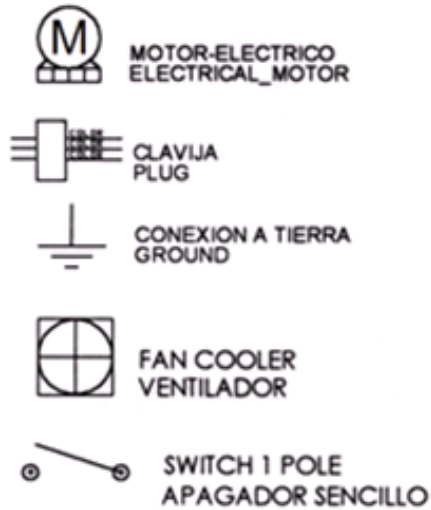
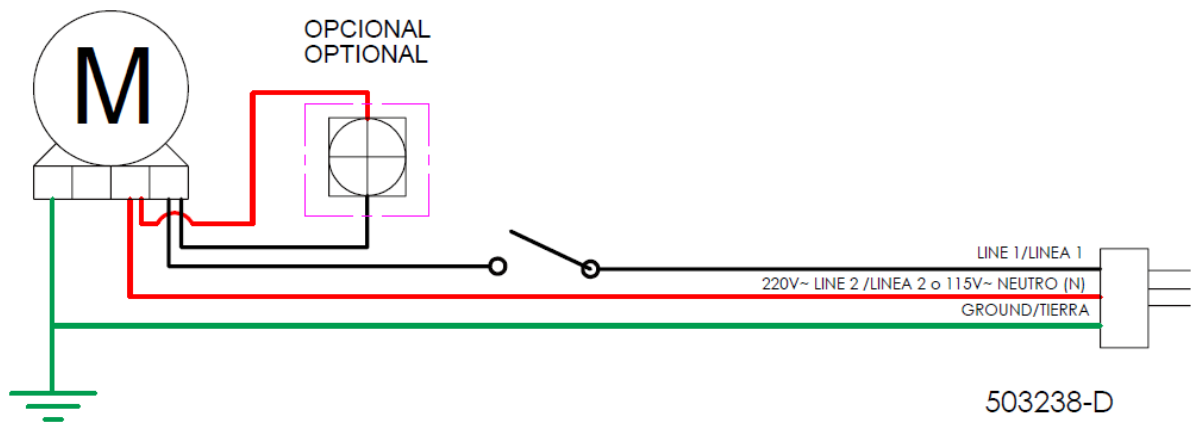
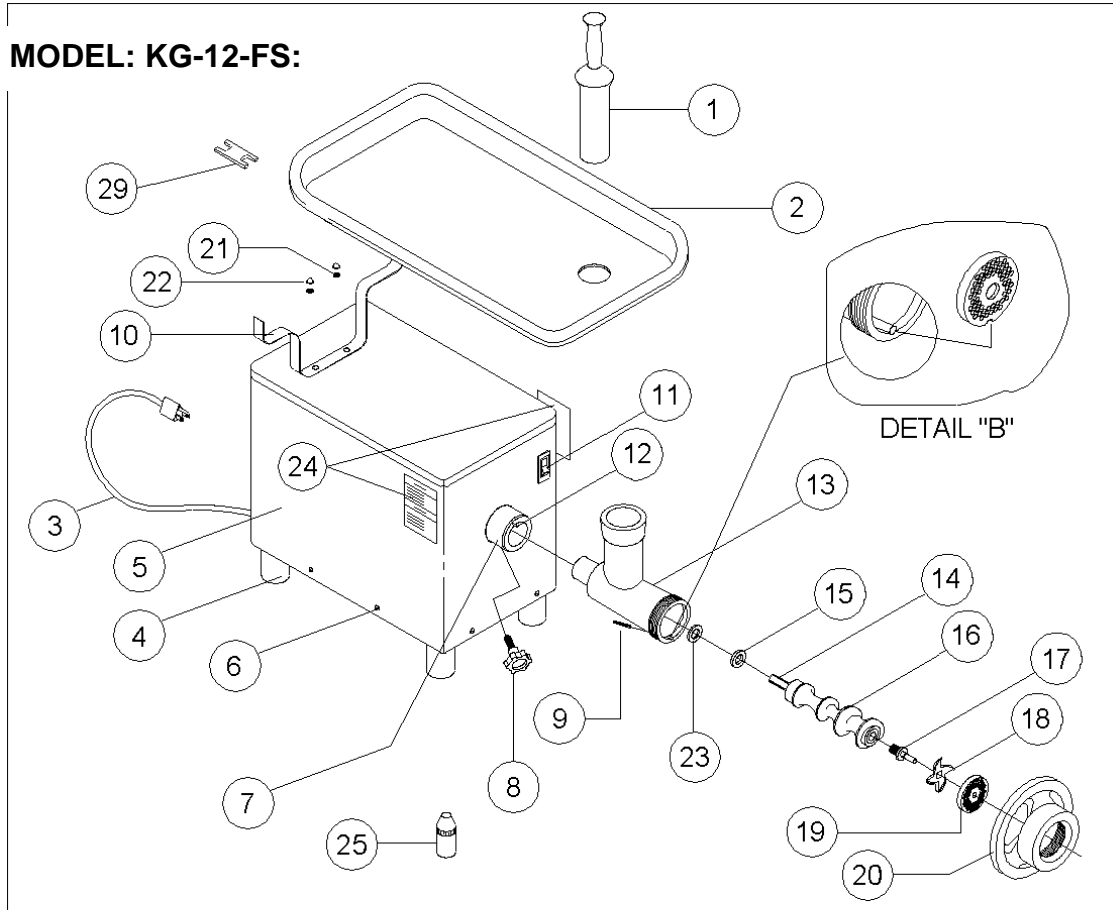


DIAGRAMA ELECTRICO  
ELECTRICAL DIAGRAM  
KG-12-FS  
PRO-CUT



CAPACITOR NO REPRESENTADO EN EL DIAGRAMA ELECTRICO, YA QUE ES PARTE DEL MOTOR.  
CAPACITOR IS NOT SHOWN AT THE CIRCUIT DIAGRAM, CAUSE IS PART OF THE MOTOR.

**X.- PARTS LIST KG-12-FS:**



No.	DESCRIPTION	QTY.
1	STOMPER	1
2	STAINLESS STEEL TRAY	1
3	POWER CORD	1
4	RUBBER LEGS	4
5	STAINLESS STEEL CASE	1
6	STAINLESS STEEL SCREW 3/16" x 3/8"	10
7	GEAR BOX COVER	1
8	HEADSTOCK KNOB	1
9	GUIDE PIN 5/32" x 11/16"	1
10	SUPPORT TRAY	1
11	SWITCH	1
12	STAINLESS STEEL GUIDE PIN 5/16" x 3/4"	1
13	HEADSTOCK	1
14	REAR ROD	1
15	NYLON WASHER	1
16	FEED SCREW (WORM)	1
17	FRONT ROD	1
18	KNIFE	1
19	PLATE	1
20	HEADSTOCK RING	1
21	STAINLESS STEEL WASHER FOR SUPPORT TRAY	2
22	STAINLESS STEEL NUT #8-32 FOR SUPPORT TRAY	2
23	BRONZE WASHER	1
24	WARNING DECAL	1
25	BOTTLE WITH FDA APPROVE GREASE	1
28	MOTOR 3/4HP SINGLE PHASE (NOT SHOWN)	1
29	WRENCH FOR SUPPORT TRAY NUTS	1

**THANK YOU FOR READ THIS MANUAL.  
ANY QUESTION PLEASE CONTACT YOUR PRO-CUT DEALER.**